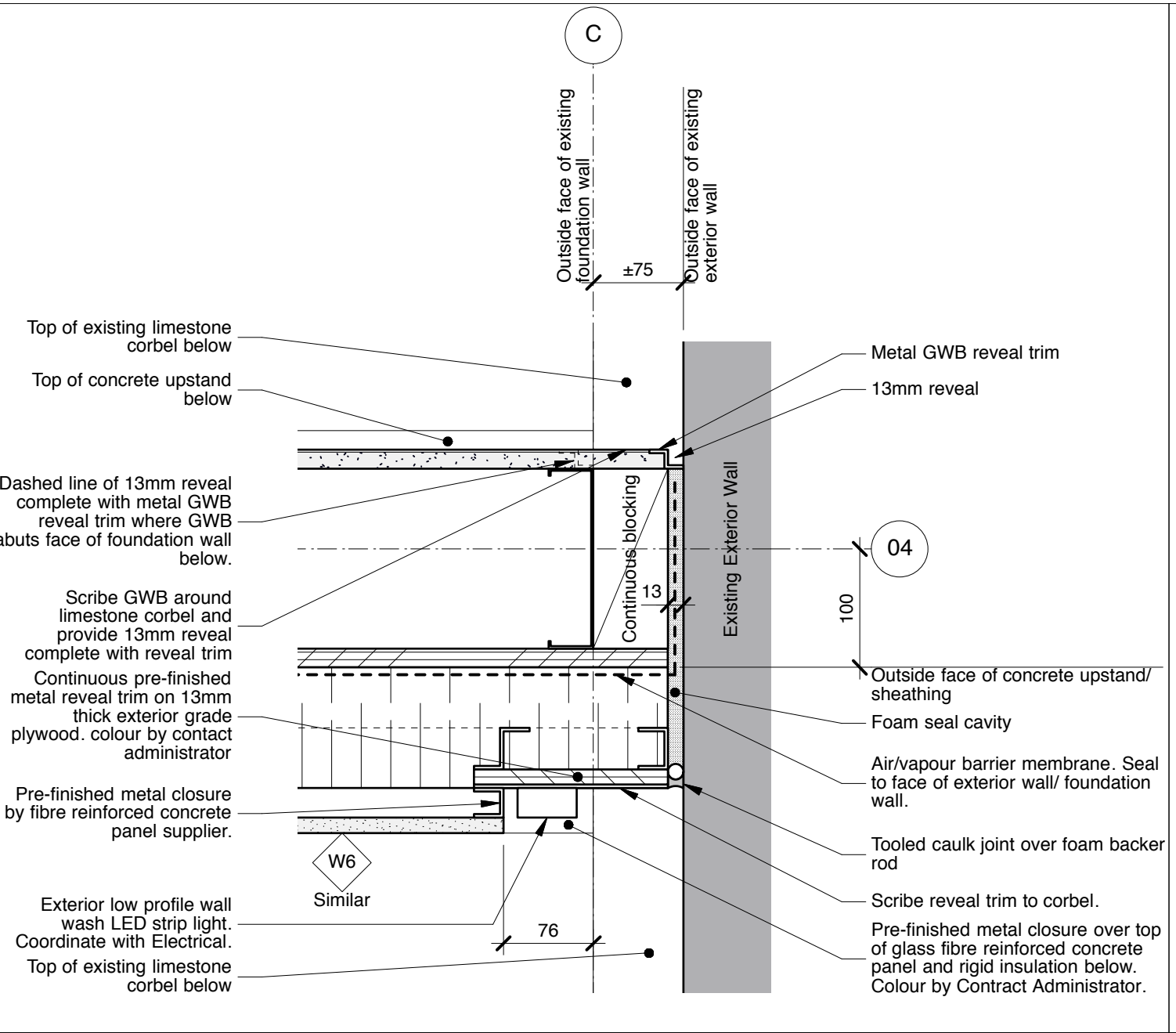
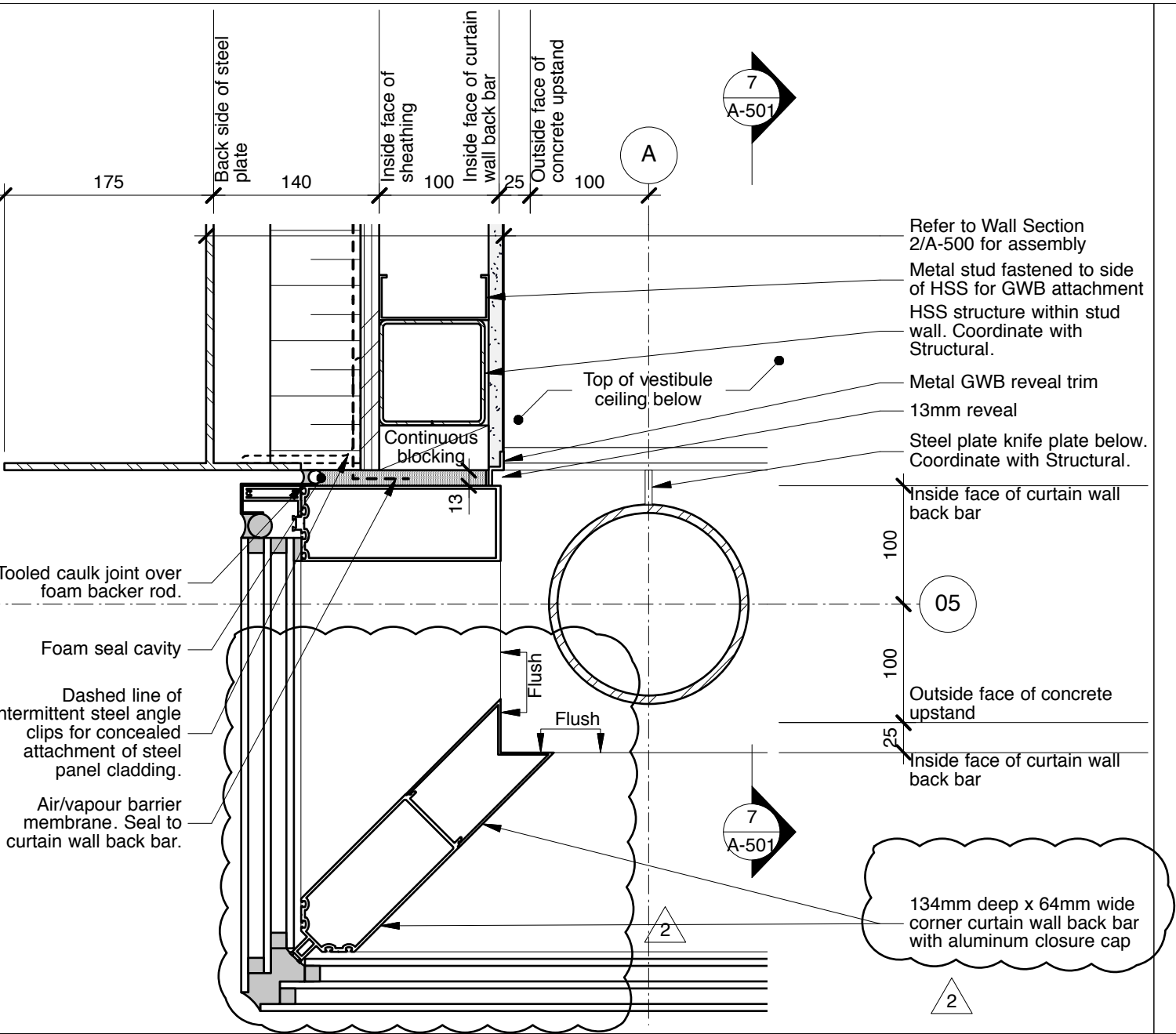


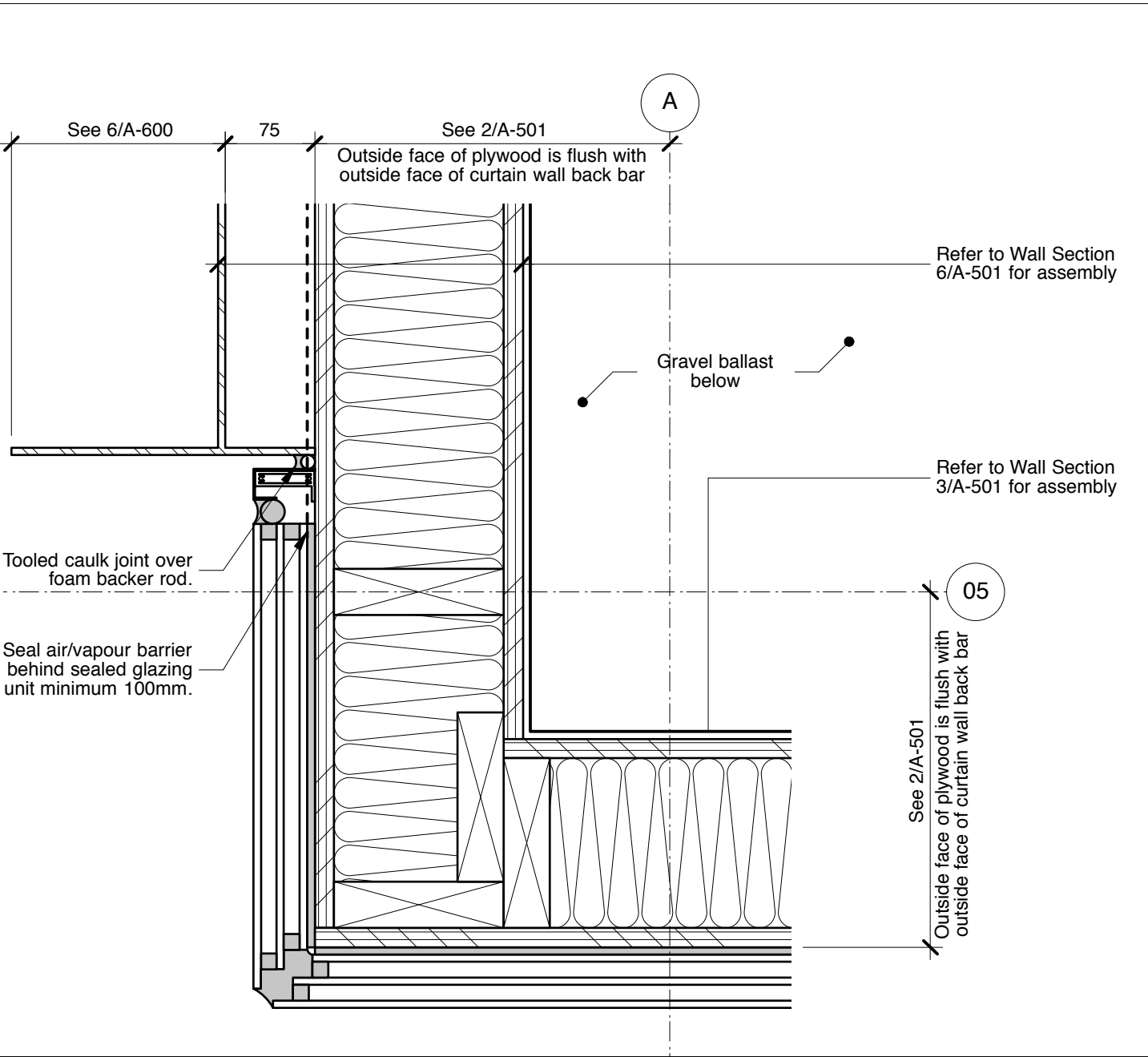
12 Plan Detail - Exterior Rated Wall Abutting Non-Rated Exterior Wall at Grids D and O1
 A-600 1:5



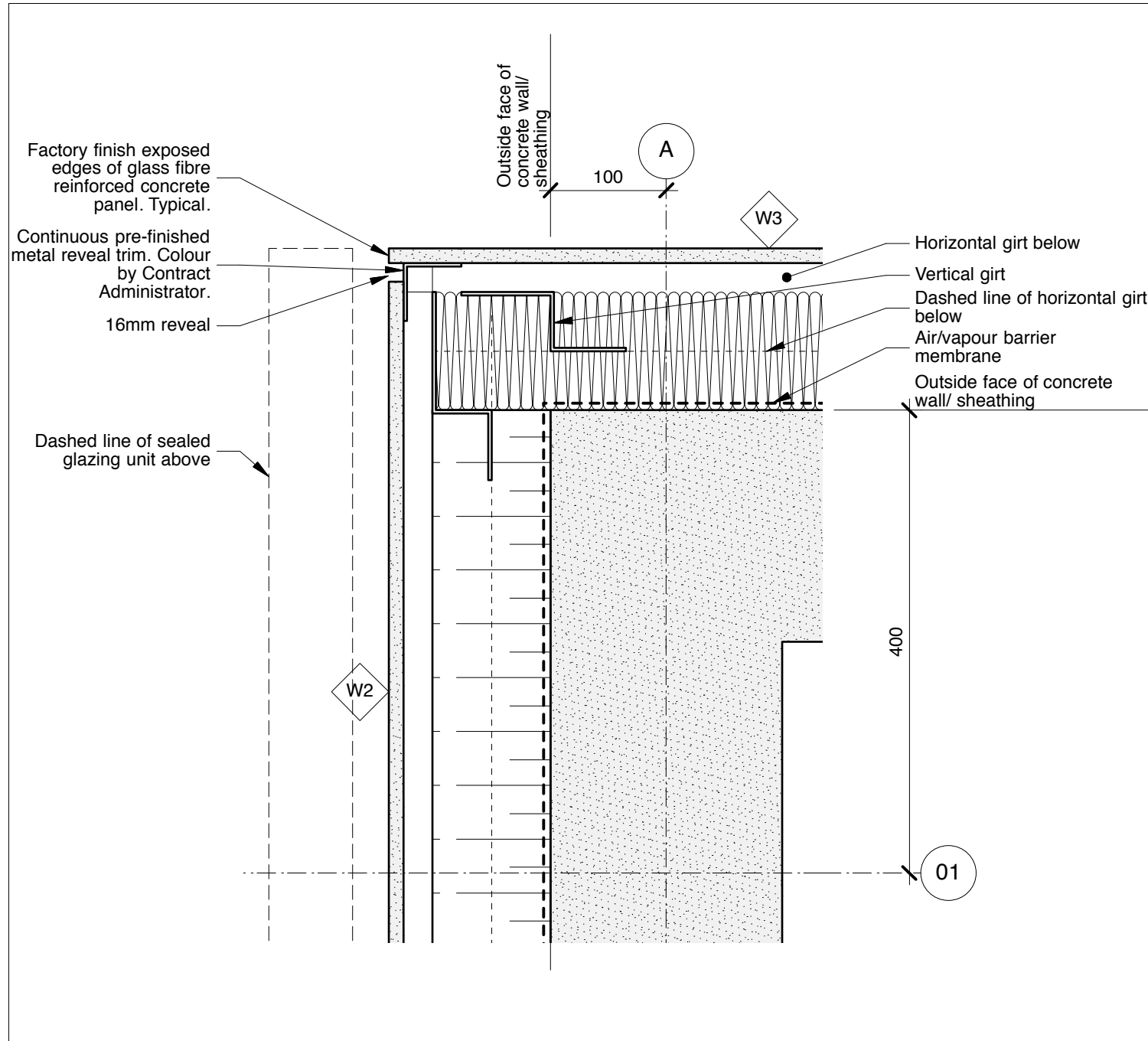
9 Plan Detail - Exterior Wall Abutting Existing Exterior Wall at Grids C and O4
 A-600 1:5



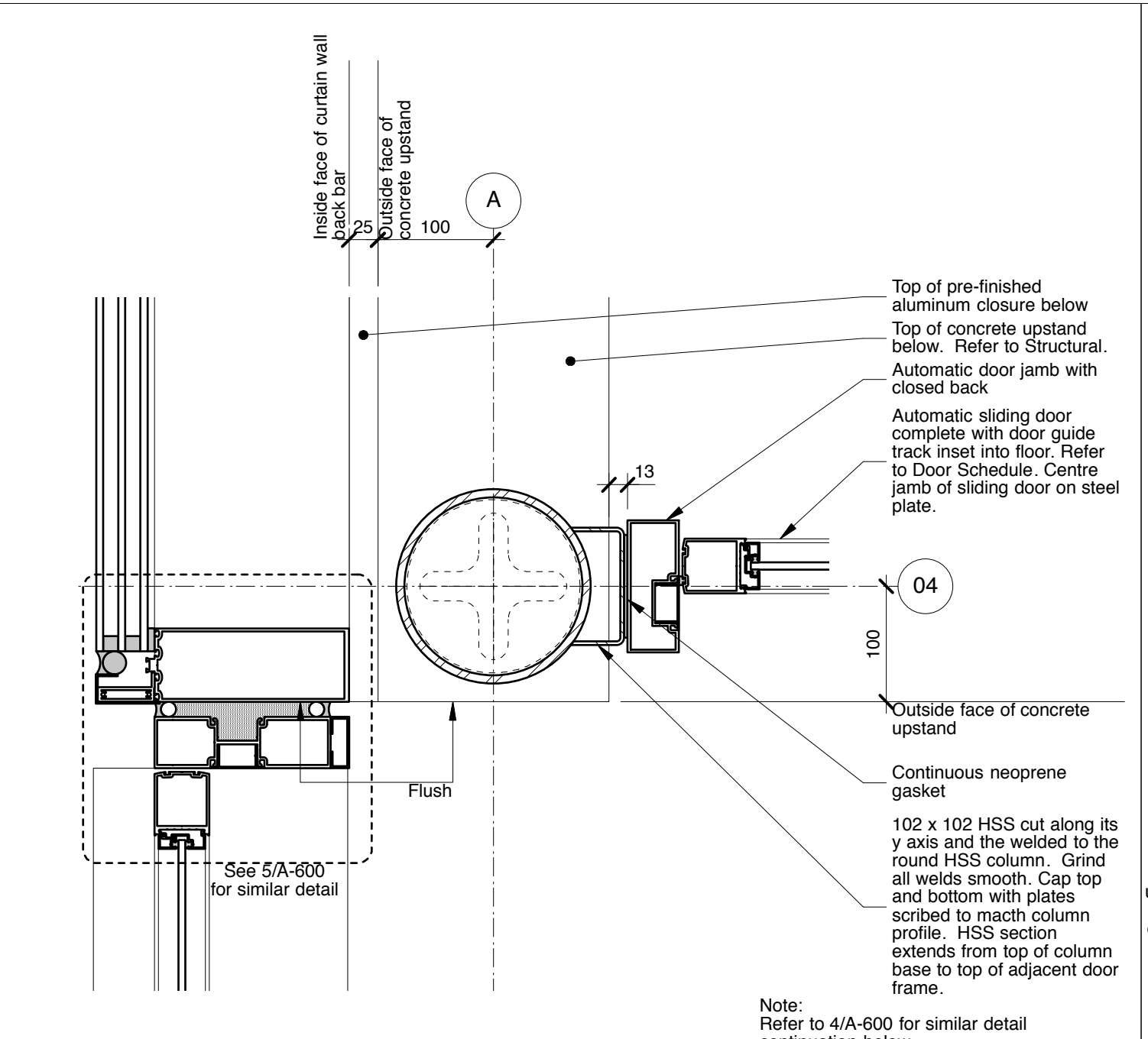
6 Plan Detail - Plate Steel Panel Cladding Abutting Curtain Wall Above Entry Door at Grids A and O5
 A-600 1:5



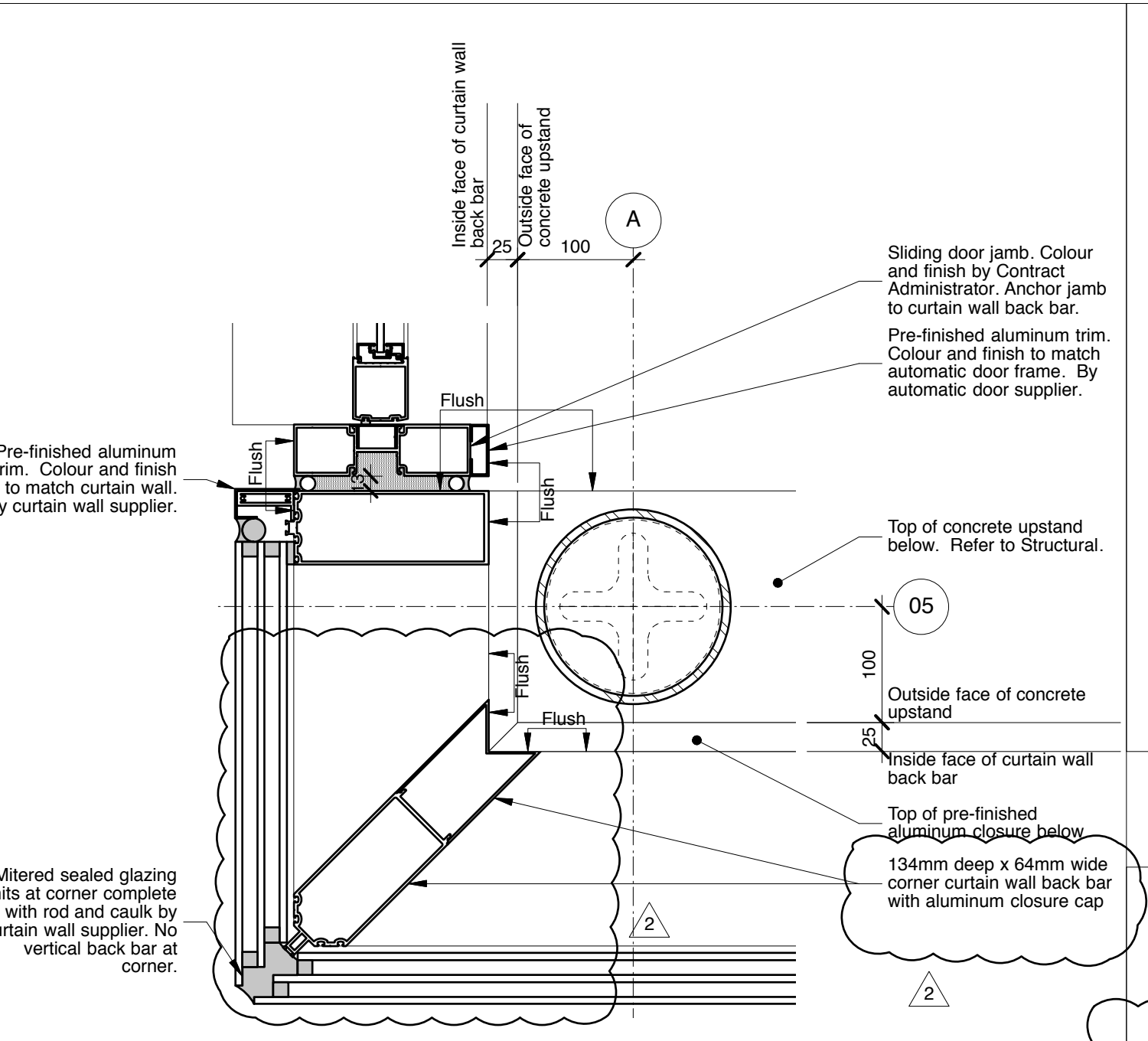
3 Plan Detail - Glazed Parapet Corner at Grids A and O5
 A-600 1:5



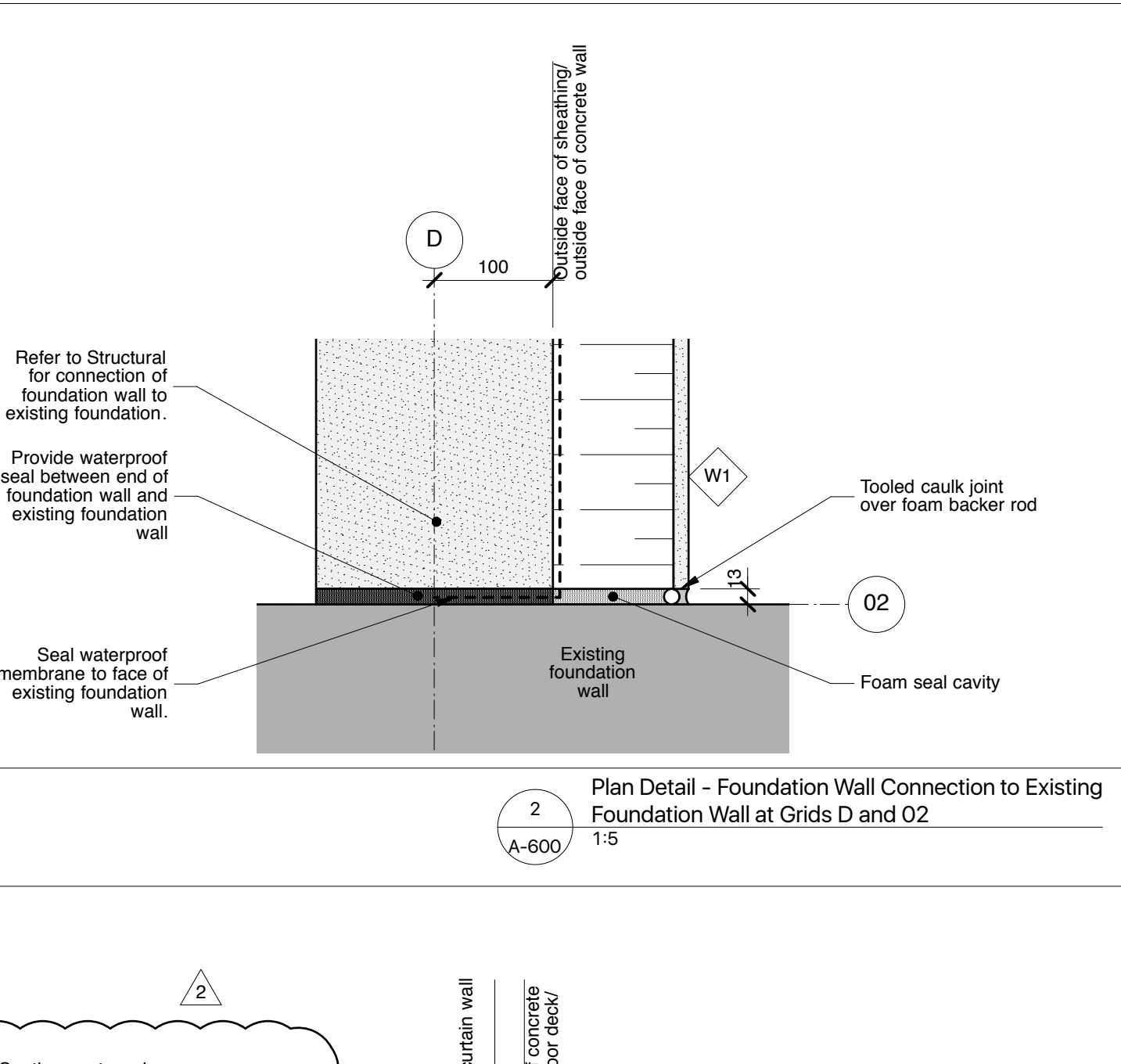
11 Plan Detail - Exterior Rated Foundation Wall Abutting Non-Rated Exterior Foundation Wall at Grids A and O1
 A-600 1:5



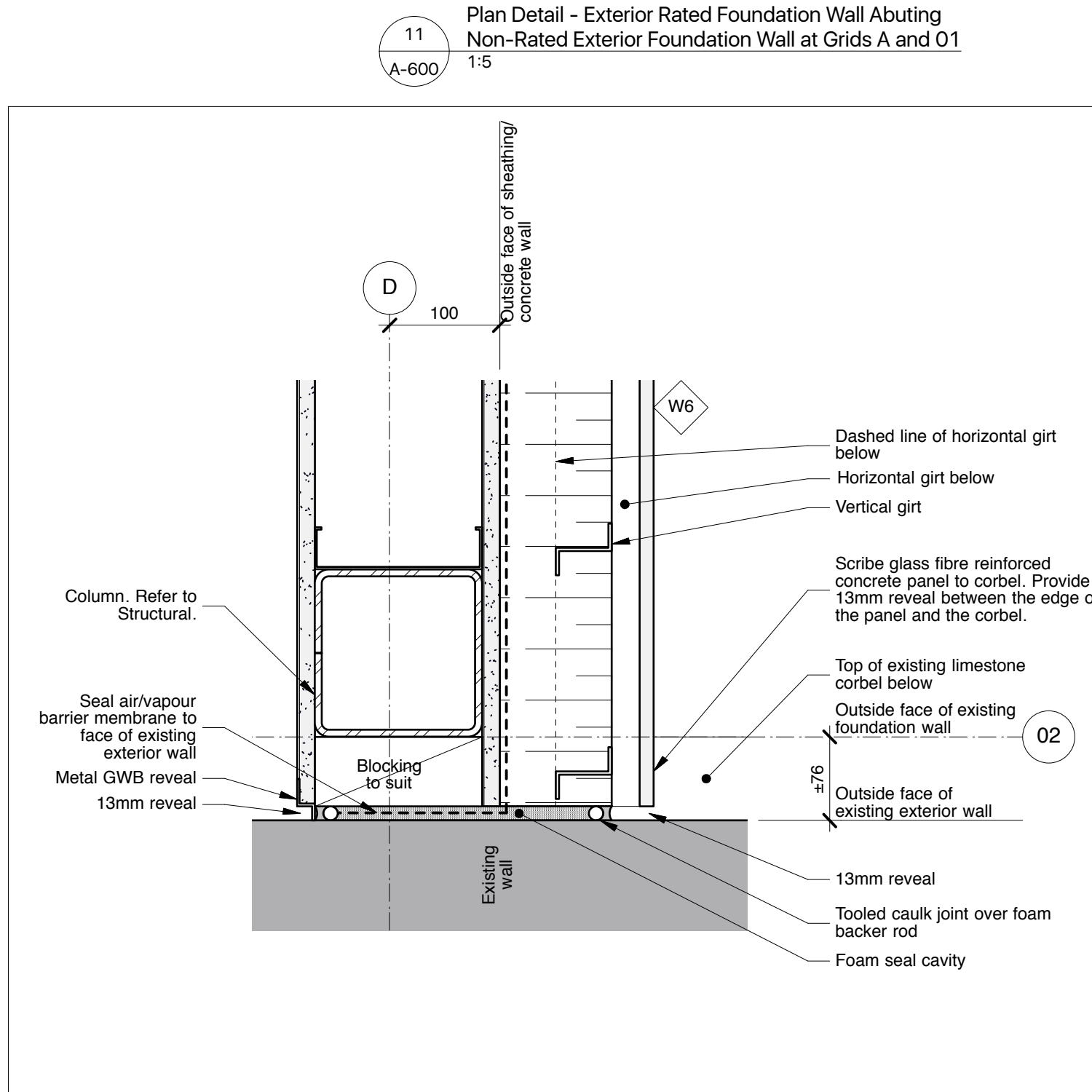
8 Plan Detail - Interior and Exterior Sliding Door Jamb at Column (Above top of Upstand) at Grids A and O4
 A-600 1:5



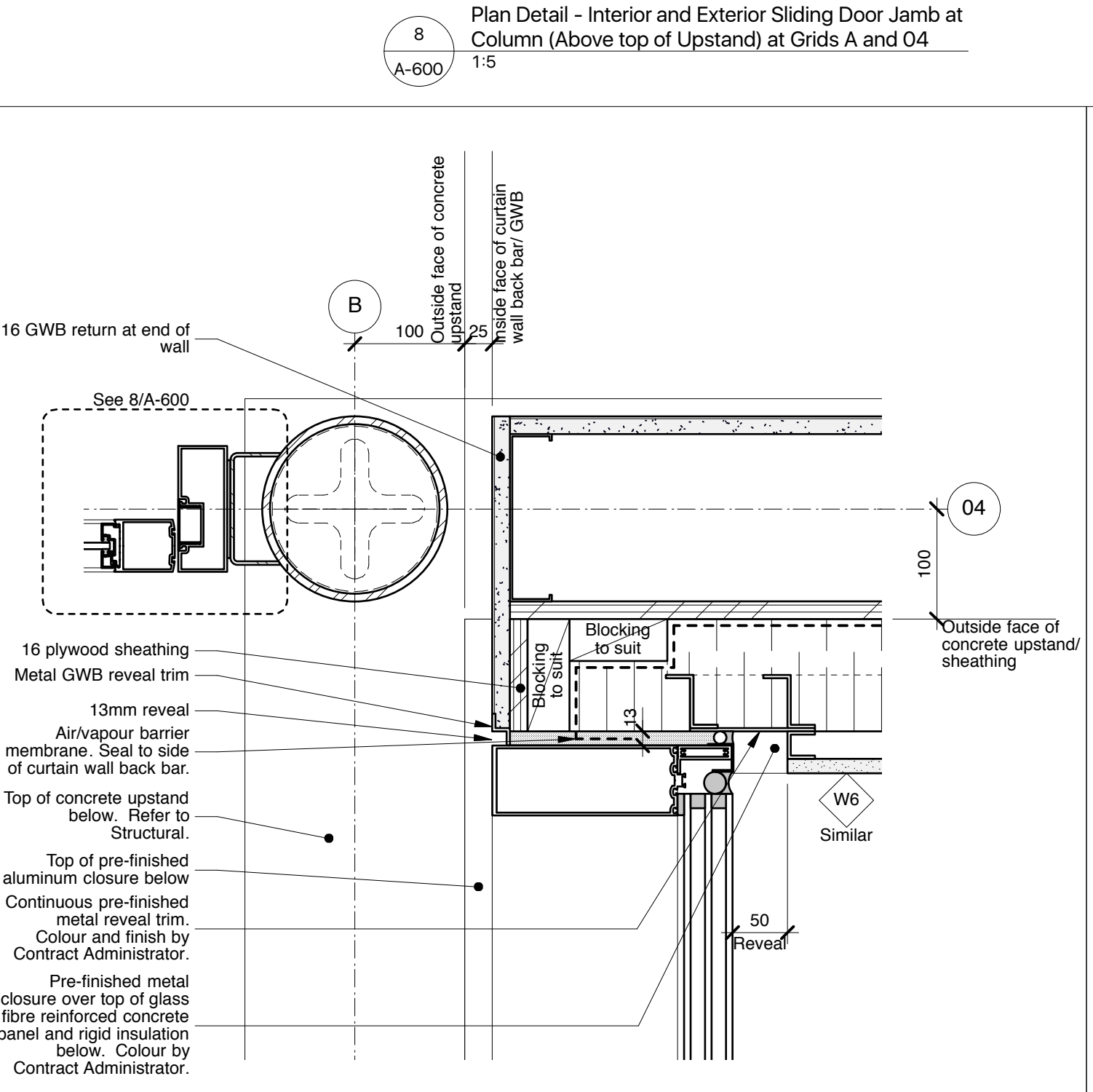
5 Plan Detail - Exterior Sliding Door Jamb at Column (Above top of Upstand) at Grids A and O5
 A-600 1:5



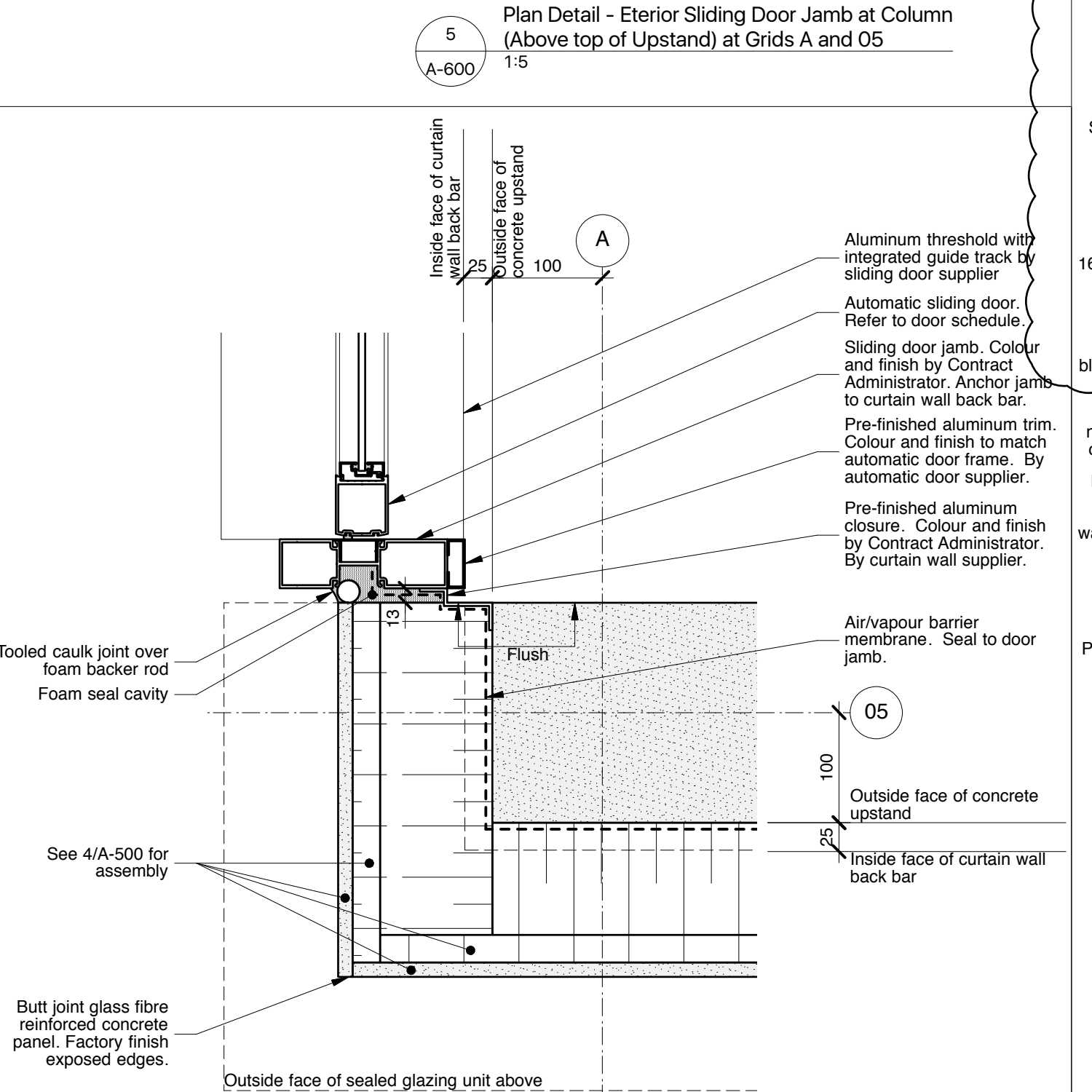
2 Plan Detail - Foundation Wall Connection to Existing Foundation Wall at Grids D and O2
 A-600 1:5



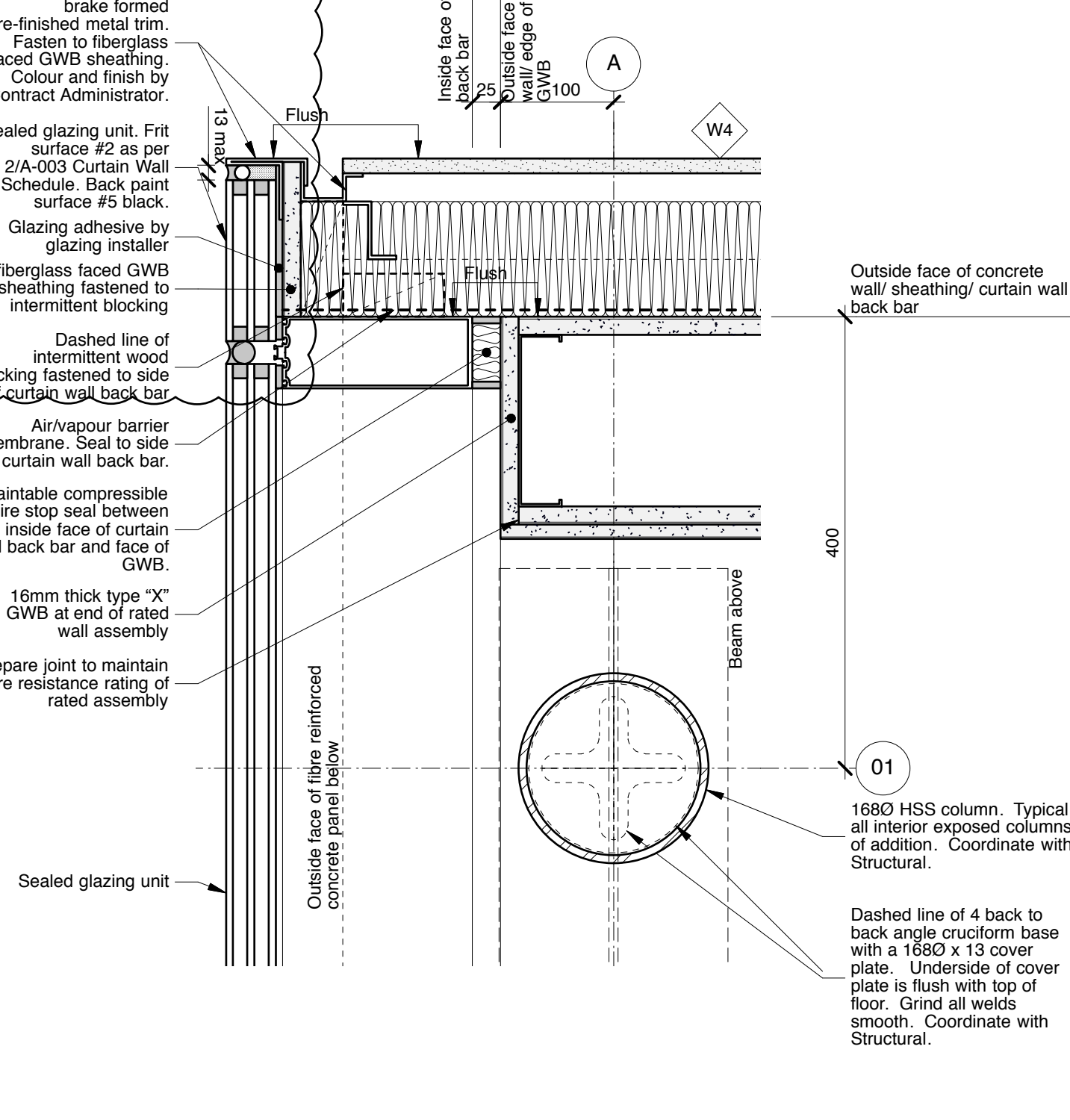
10 Plan Detail - Exterior Wall Abutting Existing Exterior Wall at Grids d and O2
 A-600 1:5



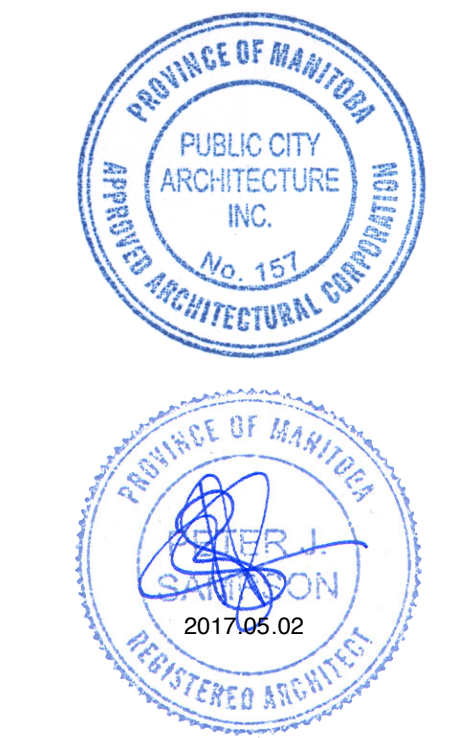
7 Plan Detail - Curtain Wall Abutting Exterior Wall at Column on Grids B and O4
 A-600 1:5



4 Plan Detail - Exterior Sliding Door Jamb at Column (Below top of Upstand) at Grids A and O5
 A-600 1:5



1 Plan Detail - Curtain Wall Meeting Rated Exterior Wall at Grids A and O1
 A-600 1:5



This drawing must not be scaled. The contractors shall verify all dimensions and other data on site prior to commencement of work. Discrepancies, errors, and omissions are to be reported to Public City Architecture Inc. prior to proceeding with the Work.

Drawings and specifications as instruments of service are the property of Public City Architecture Inc. and when made, must bear their name. All prints to be returned to Public City Architecture Inc. upon request.

Project
St. John's Library Renovation

Drawing
Details

Drawn By
 MP
 Scale
 As Noted

Reviewed By
 PS
 Drawing No.
A-600

Date
 2016.07.18

Project No.
 1503b