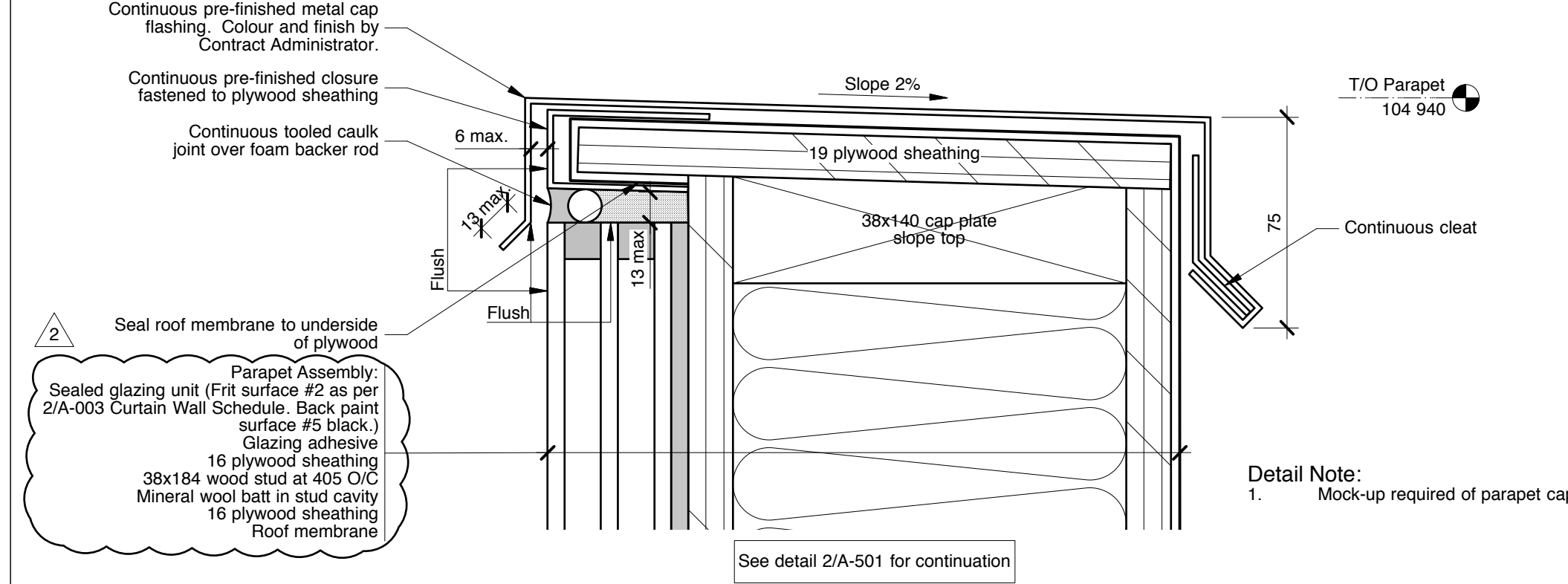
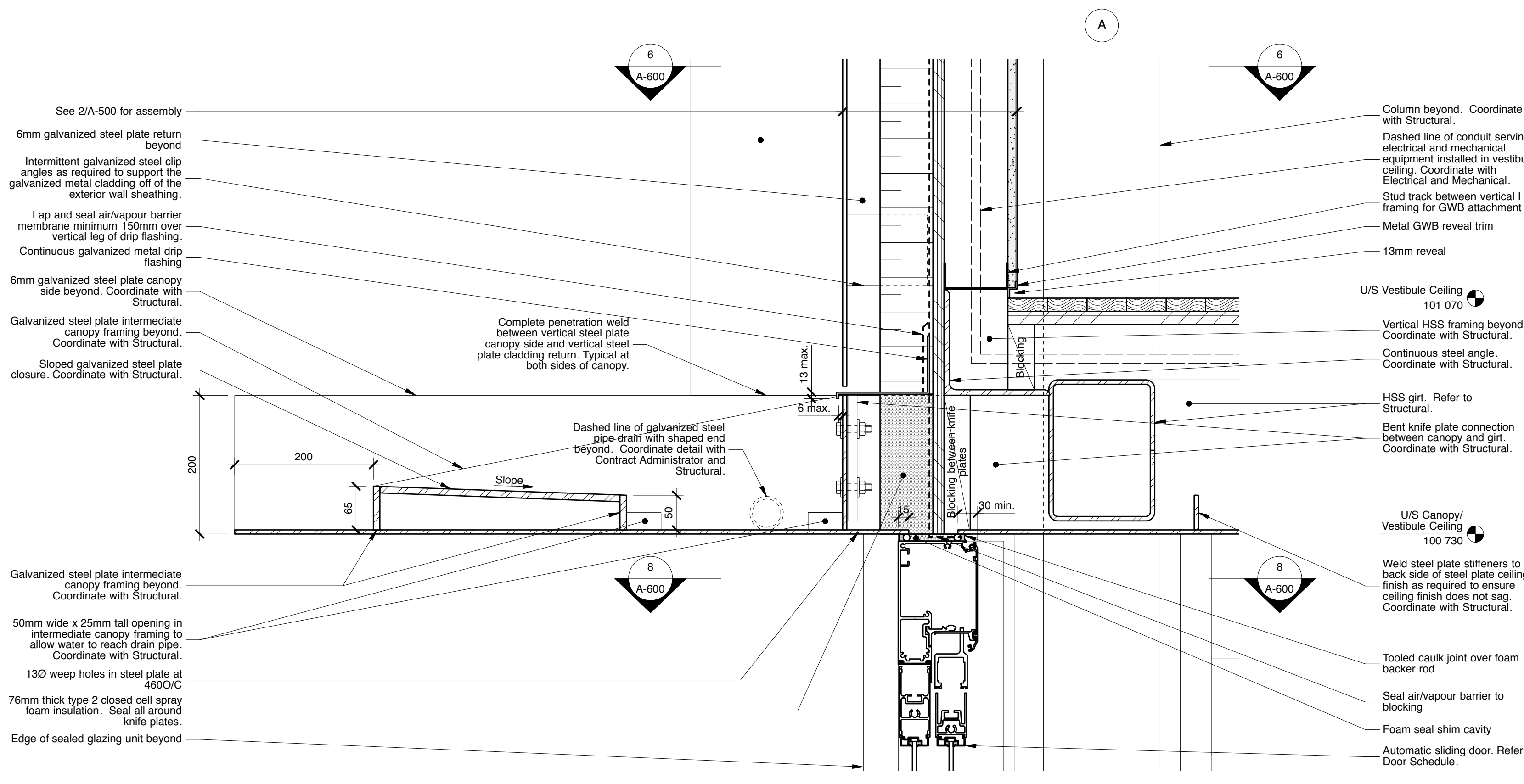


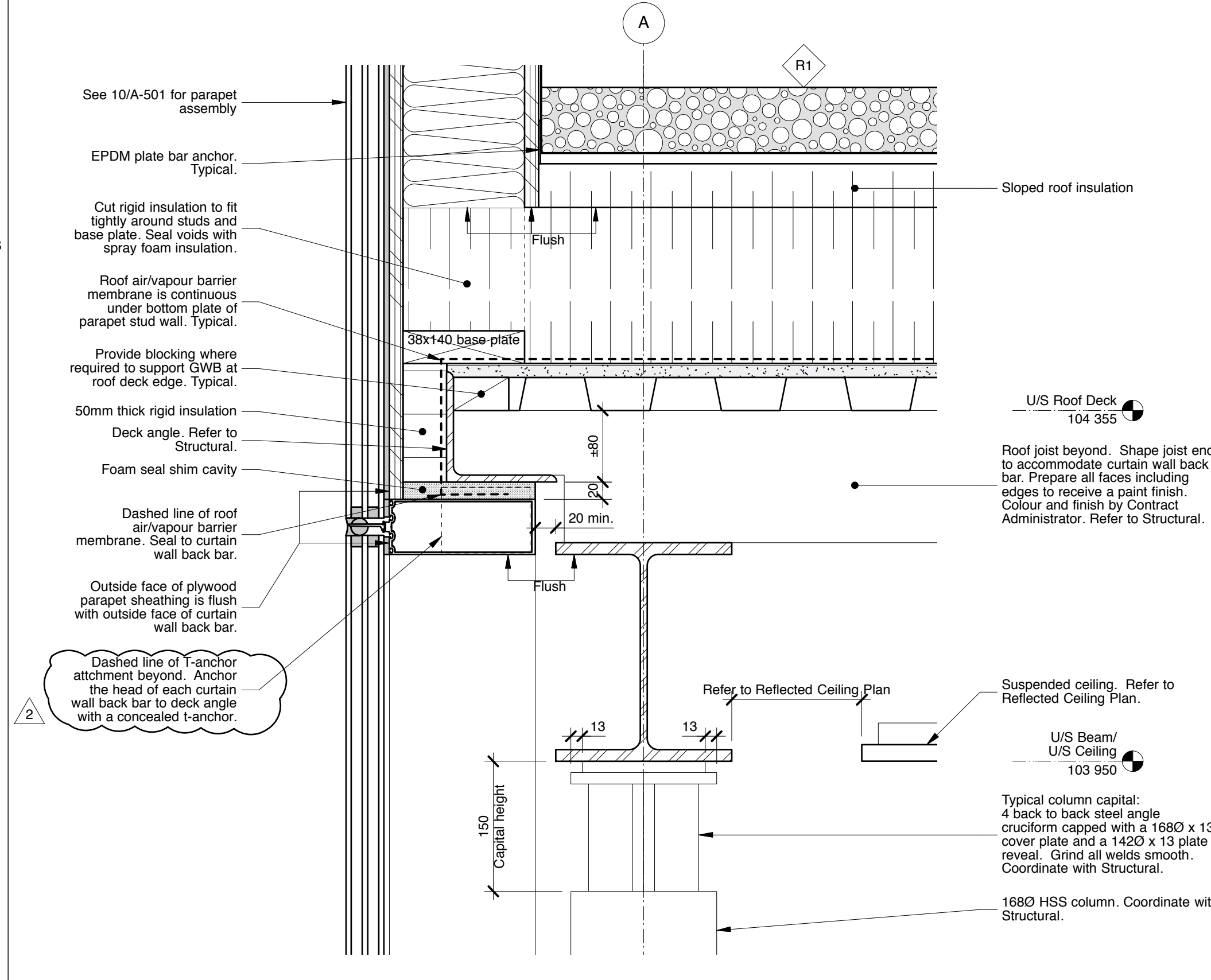
6 Section Detail - Parapet Cap at Steel Panel Cladding
A-501 1:2



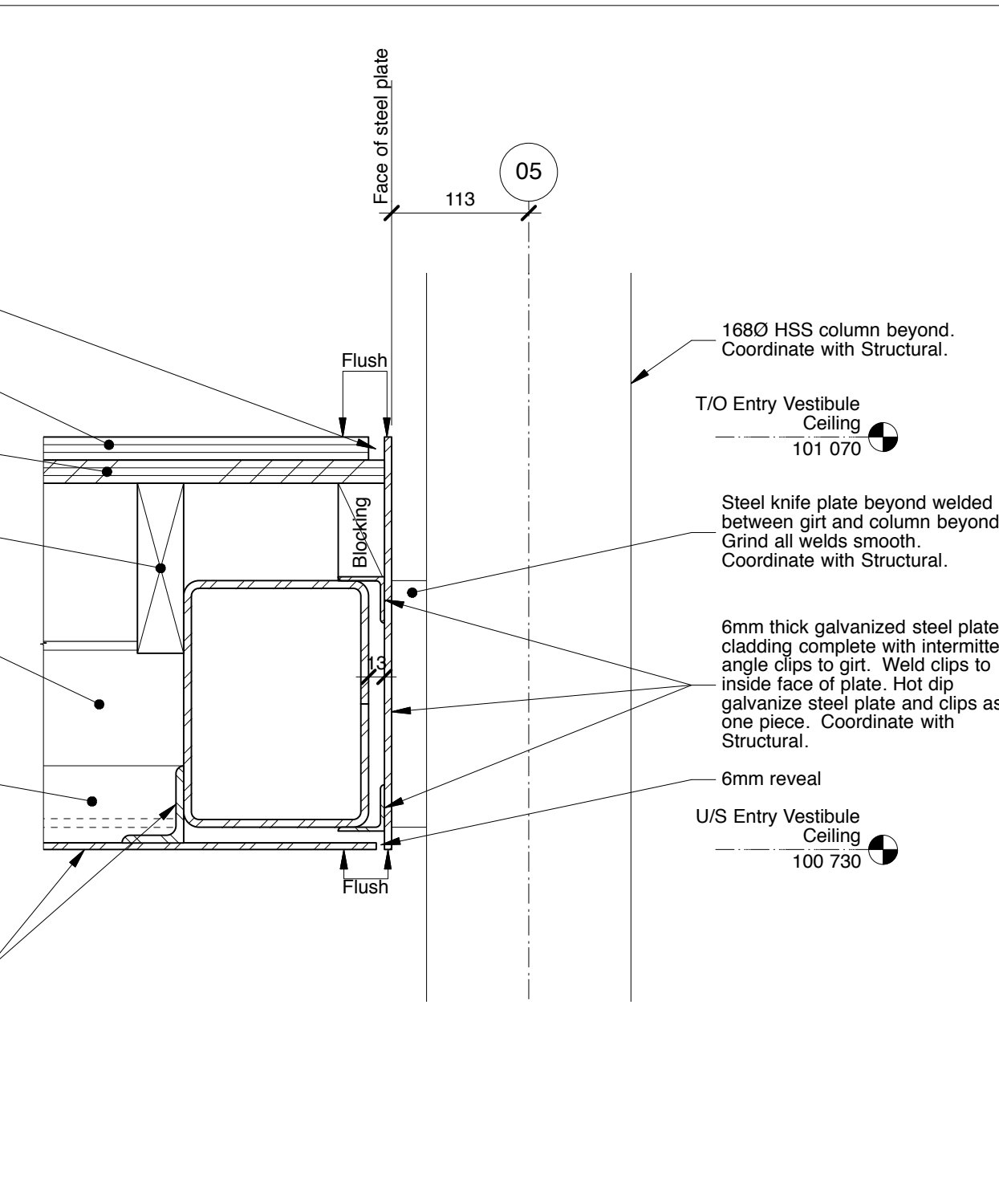
3 Section Detail - Typical Parapet Cap at Glazed Parapets
A-501 1:2



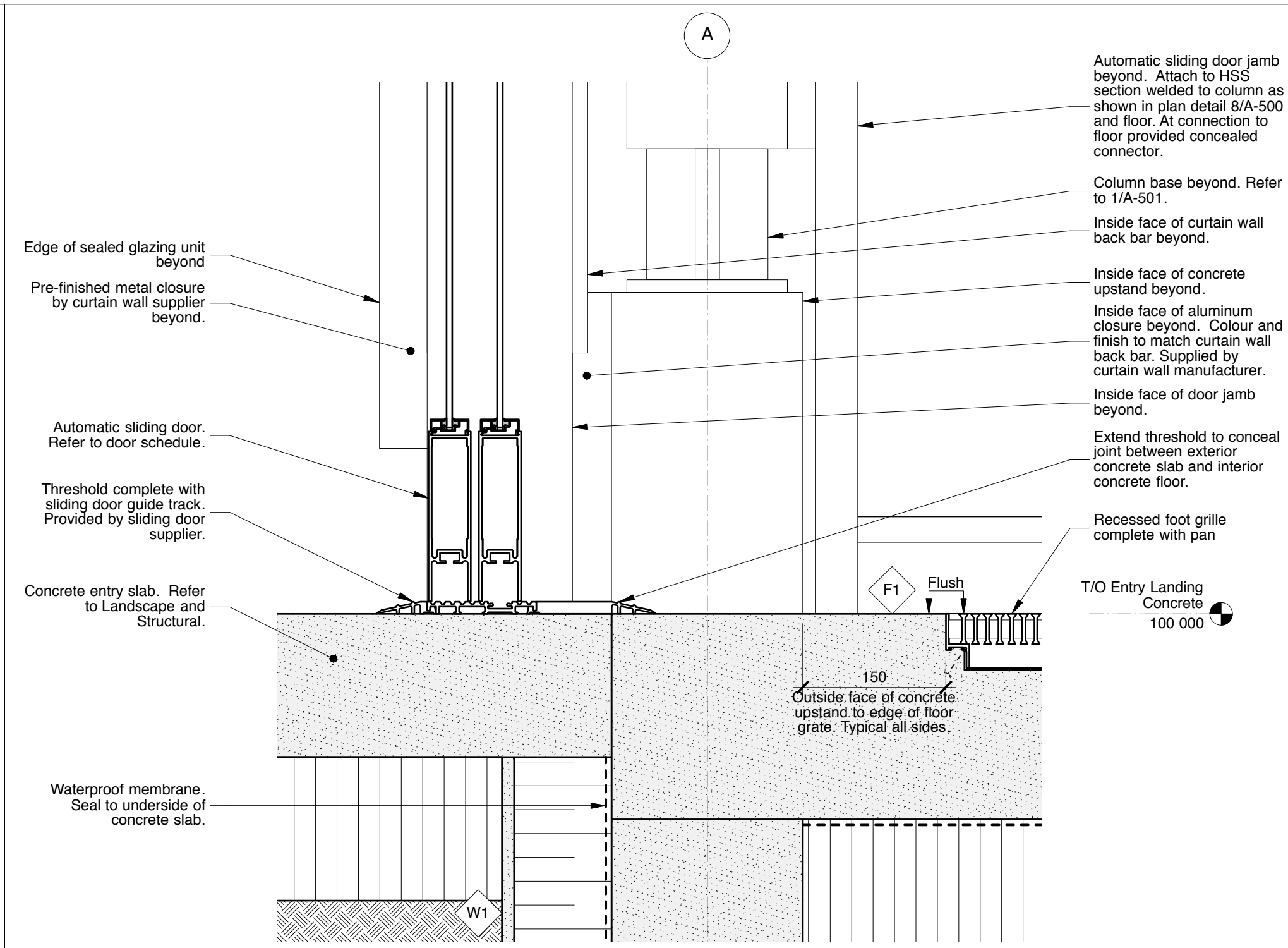
5 Section Detail - Exterior Sliding Door Header and Entry Canopy
A-501 1:5



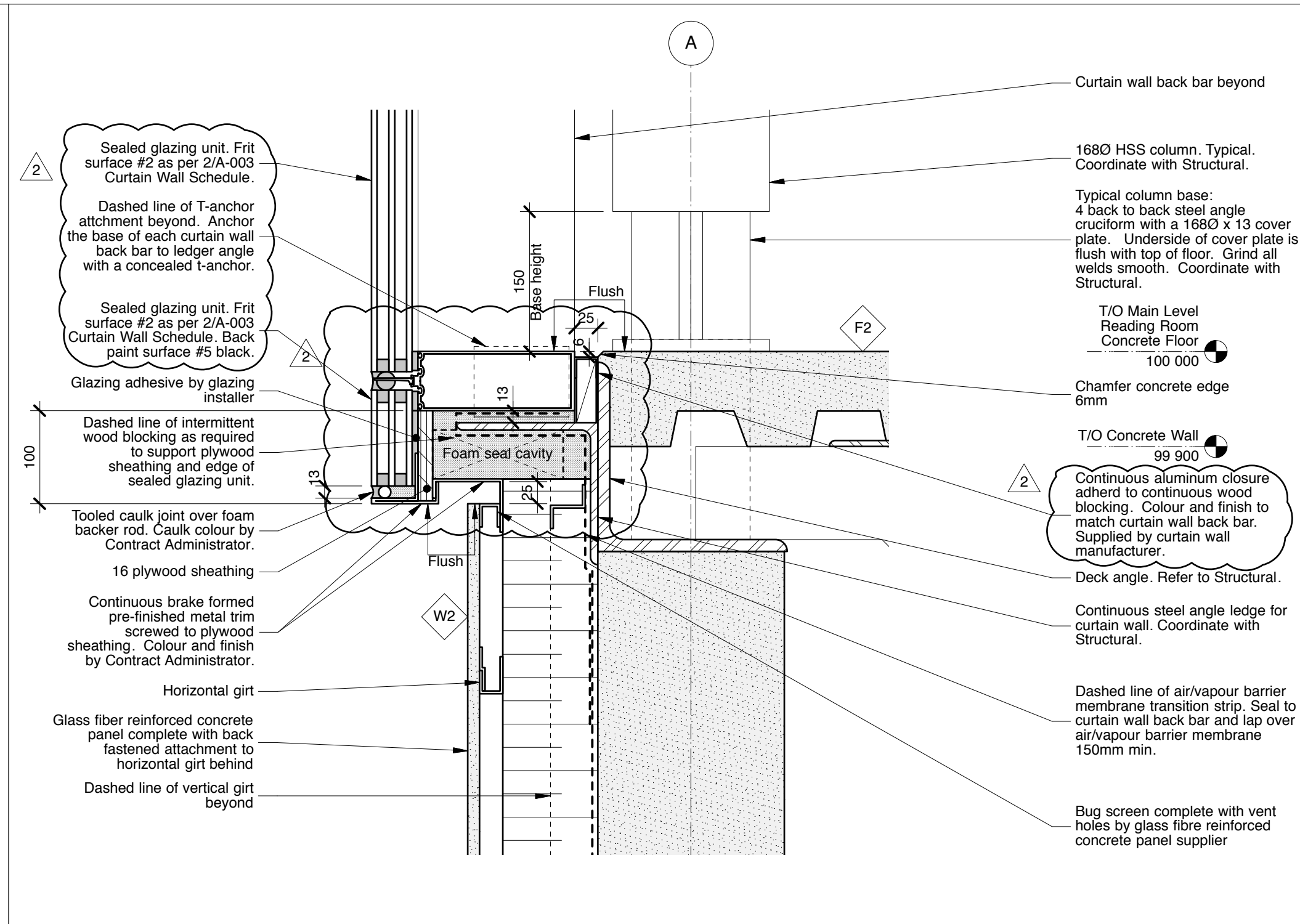
2 Typical Section Detail - Curtain Wall Head and Column Capital
A-501 1:5



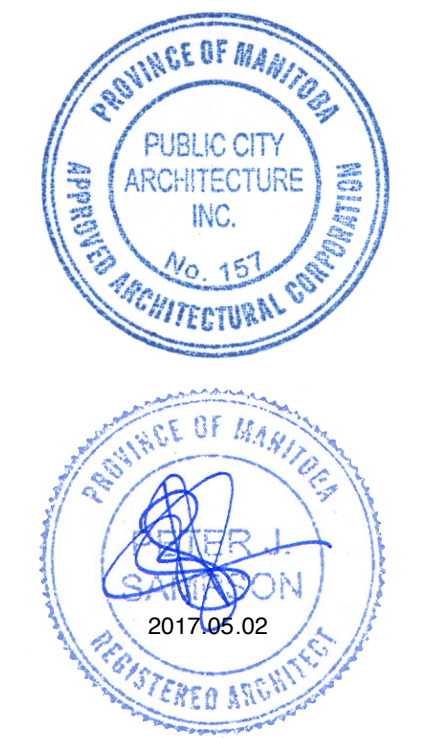
7 Section Detail - Vestibule Ceiling Edge
A-501 1:5



4 Section Detail - Exterior Sliding Door Sill
A-501 1:5



1 Section Detail - Curtain wall Sill in Main Level Reading Room
A-501 1:2



This drawing must not be scaled. The contractors shall verify all dimensions and other data on site prior to commencement of work. Discrepancies, errors, and omissions are to be reported to Public City Architecture Inc. prior to proceeding with the Work.

Drawings and specifications as instruments of service are the property of Public City Architecture Inc. the copyright in the same being reserved. No reproduction or revision to these drawings may be made without the permission of Public City Architecture Inc. and when made, must bear their name. All prints to be returned to Public City Architecture Inc. upon request.

Project
St. John's Library Renovation

Drawing
Details

Drawn By
MP
Scale
As Noted

Reviewed By
PS
Drawing No.
A-501

Date
2016.07.18

Project No.
1503b