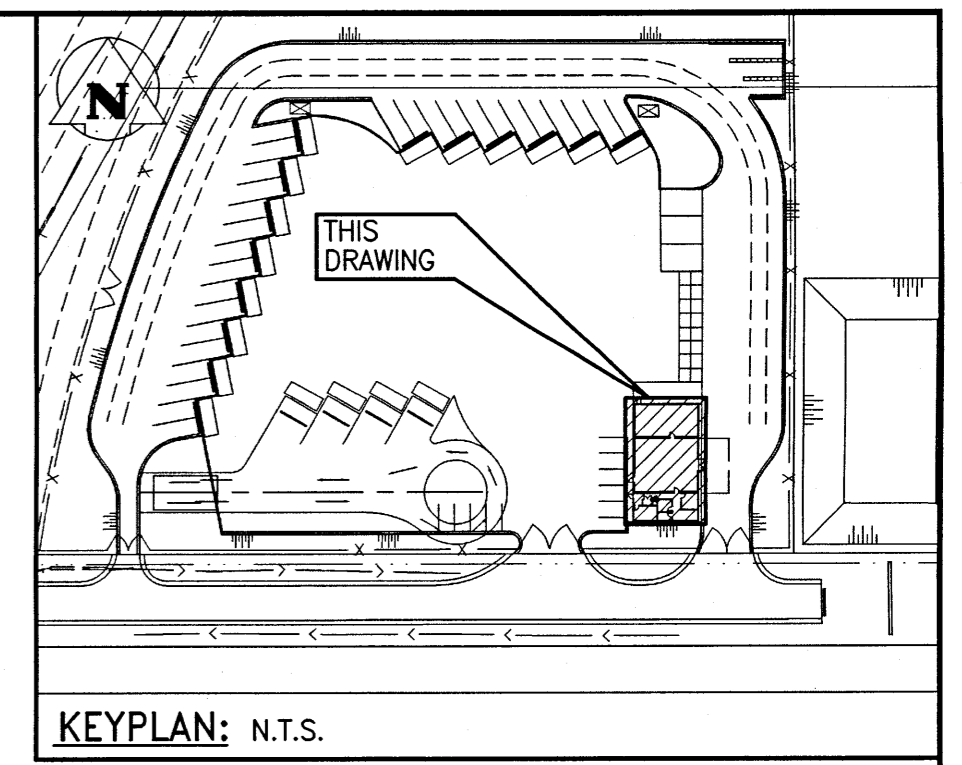


MAIN FLOOR PLAN
SCALE: 1:75

GENERAL NOTES:

1. CONFORM TO MANITOBA PLUMBING CODE AND ALL LOCAL CODES AND AUTHORITY HAVING JURISDICTION.
2. EQUIPMENT LOCATIONS AND PIPE ROUTING INDICATED ON THE DRAWINGS IS APPROXIMATE ONLY. CONFIRM IN THE FIELD. REROUTE PIPING AS REQUIRED TO ELIMINATE FIELD INTERFERENCES, WITH BUILDING STRUCTURES, ELECTRICAL, ETC. CONFIRM CHANGES WITH CONTRACT ADMINISTRATOR. CO-ORDINATE WORK WITH ALL SUBTRADES. WHERE DIMENSIONS ARE INDICATED FOR PIPING EQUIPMENT SIZES, ETC. THESE ARE FOR BIDDING PURPOSES ONLY. THE CONTRACTOR IS RESPONSIBLE TO VERIFY ALL DIMENSIONS IN THE FIELD PRIOR TO ORDERING EQUIPMENT AND COMMENCING INSTALLATION WITHOUT EXTRA CHARGES TO THE PROJECT. THE CONTRACTOR IS RESPONSIBLE TO ENSURE ALL EQUIPMENT, DUCTWORK AND PIPING FITS IN THE SPACE AVAILABLE AND TO MAINTAIN THE GENERAL DESIGN INTENT FOR THE SYSTEMS.
3. INSULATE DOMESTIC HOT WATER (DHW), DOMESTIC HOT WATER RETURN (DHW), DOMESTIC TEMPERED WATER (DTW) AND DOMESTIC COLD WATER (DCW) PIPING.
4. PROVIDE ALL WALL PENETRATIONS. PENETRATIONS THROUGH FIRE RATED WALLS SHALL BE FIRE SEALED.
5. PROVIDE SHUT-OFF VALVES AT ALL FIXTURES, WATER TANKS, AND WATER HAMMER ARRESTERS AT ENDS OF ALL PIPE RUNS.
6. CONFIRM ADEQUATE PIPE SLOPES EXIST FOR ALL NEW DRAINAGE PIPING.

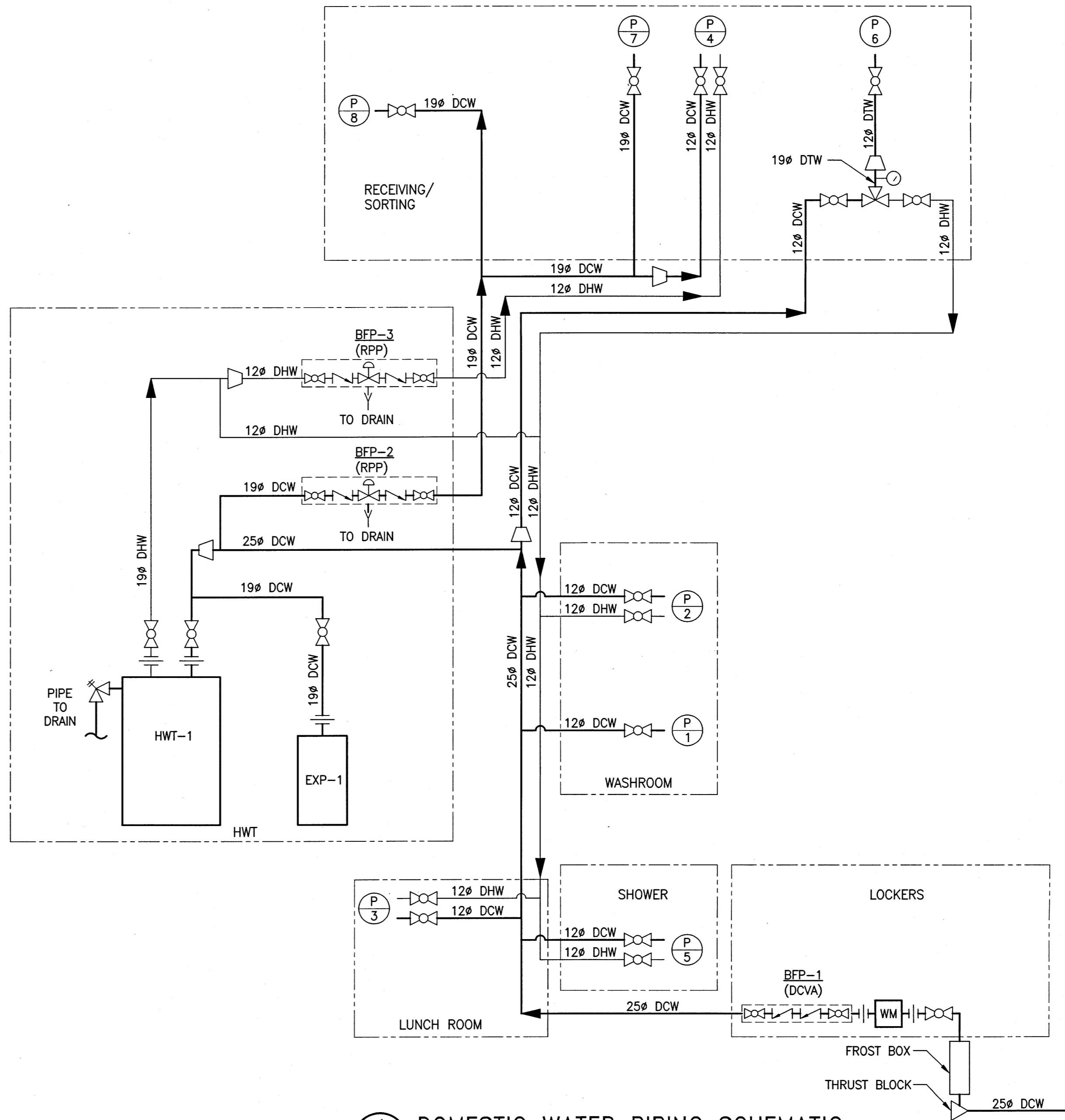


LEGEND:

- NEW EQUIPMENT/PIPING
- - - UNDER FLOOR SLAB/PIPING
- DCW DOMESTIC COLD WATER
- DHW DOMESTIC HOT WATER
- DTW DOMESTIC TEMPERED WATER
- HWT-# HOT WATER TANK
- EXP-# EXPANSION TANK
- BFP-# BACKFLOW PREVENTER
- BALL VALVE
- ⊗ THERMOSTATIC MIXING VALVE
- ⊘ RELIEF VALVE
- ⌞ CHECK VALVE
- ⊕ UNION
- ⊘ REDUCER
- T.D. TRENCH DRAIN
- S.S. SANITARY SEWER
- C.O. CLEAN OUT
- F.F.D. FUNNEL FLOOR DRAIN
- F.E. FIRE EXTINGUISHER
- TEMPERATURE GAUGE
- P 1 WATER CLOSET
- P 2 WALL MOUNT LAVATORY
- P 3 SINGLE SINK
- P 4 SERVICE SINK
- P 5 SHOWER
- P 6 EMERGENCY EYE/FACE WASH
- P 7 HOSE BIBB
- P 8 WALL HYDRANT
- WM WATER METER

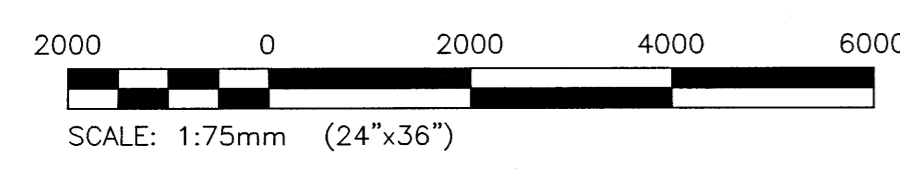
KEYNOTES:

1. INSTALL NEW TRENCH FLOOR DRAIN AND ASSOCIATED DUAL INLET SUMP IN GARAGE.
2. INSTALL NEW WALL HYDRANT ON EXTERIOR WALL. RUN DOMESTIC COLD WATER SUPPLY LINE AT UNDERSIDE OF CEILING WHILE RUNNING THROUGH RECEIVING SORTING ROOM.
3. INSTALL NEW WALL MOUNTED EMERGENCY EYE/FACE WASH TO ANSI Z358.1 AND MANUFACTURER'S INSTALLATION INSTRUCTIONS. MAINTAIN 150mm CLEARANCE FROM OBSTRUCTIONS.
4. PROVIDE NEW 75mm FUNNEL FLOOR DRAIN IN HWT ROOM. PROVIDE TRAP SEAL PRIMER.
5. INSTALL NEW DOMESTIC HOT WATER TANK (HWT-1) IN CLOSET. PIPE RELIEF VALVE TO DRAIN.
6. RUN DCW AND DHW LINES FOR PLUMBING FIXTURES (P-6) AND (P-7) THROUGH WALL AT LOW LEVEL. PROVIDE CORING THROUGH CONCRETE WALL.
7. PROVIDE FROST BOX AT WATER SERVICE ENTRANCE. COORDINATE WITH CITY OF WINNIPEG FOR SUPPLY OF WATER METER. MOUNT BACKFLOW PREVENTER (BFP-1) ON WALL.
8. PROVIDE NEW MULTI PURPOSE DRY CHEMICAL TYPE FIRE EXTINGUISHER. MOUNT UNIT TO WALL AND INSTALL TO REQUIREMENTS OF NFPA 10 (TYP.)
9. CONFIRM LOCATIONS OF ALL FIRE EXTINGUISHERS LOCATED IN RECEIVING/SORTING WITH CONTRACT ADMINISTRATOR PRIOR TO INSTALLATION.
10. PROVIDE ONE WATER-TYPE PORTABLE FIRE EXTINGUISHER IN THE RECEIVING/SORTING ROOM. INSTALL TO REQUIREMENTS OF NFPA10.

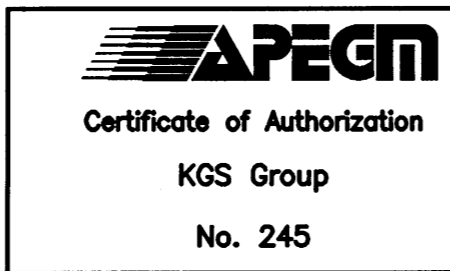


1 DOMESTIC WATER PIPING SCHEMATIC
SCALE: NTS

16-0107-010\16-0107-010_CALL-Rev B.dwg



SCALE VERIFIED BY: *[Signature]*



LOCATION APPROVED UNDERGROUND STRUCTURES

SUPV. U/G STRUCTURES COMMITTEE DATE

NOTE: LOCATION OF UNDERGROUND STRUCTURES AS SHOWN ARE BASED ON THE BEST INFORMATION AVAILABLE BUT NO GUARANTEE IS GIVEN THAT ALL EXISTING UTILITIES ARE SHOWN OR THAT THE GIVEN LOCATIONS ARE EXACT. CONFIRMATION OF EXISTENCE AND EXACT LOCATION OF ALL SERVICES MUST BE OBTAINED FROM THE INDIVIDUAL UTILITIES BEFORE PROCEEDING WITH CONSTRUCTION.

NO.	REVISIONS	DATE	BY
0	ISSUED FOR TENDER	17/03/14	[Signature]

KGS GROUP CONSULTING ENGINEERS

DESIGNED BY: MAP
DRAWN BY: EAG

CHECKED BY: [Signature]
APPROVED BY: [Signature]

HOR. SCALE: AS NOTED
VERTICAL: AS NOTED

RELEASED FOR CONSTRUCTION: [Signature]

DATE: 16/08/17

ENGINEER'S SEAL

P.S. SILVA
Member 21131
REGISTERED PROFESSIONAL ENGINEER

CONSULTANT DRAWING NO. 16-0107-010

THE CITY OF WINNIPEG WATER AND WASTE DEPARTMENT

PROJECT TITLE: 4R WINNIPEG DEPOT EAST WINNIPEG COMMUNITY RESOURCE RECOVERY CENTRE HHW BUILDING PLUMBING PLAN

SHEET 22 OF 41
COMPUTER FILE NAME: 16-0107-010
CITY DRAWING NUMBER: M01