

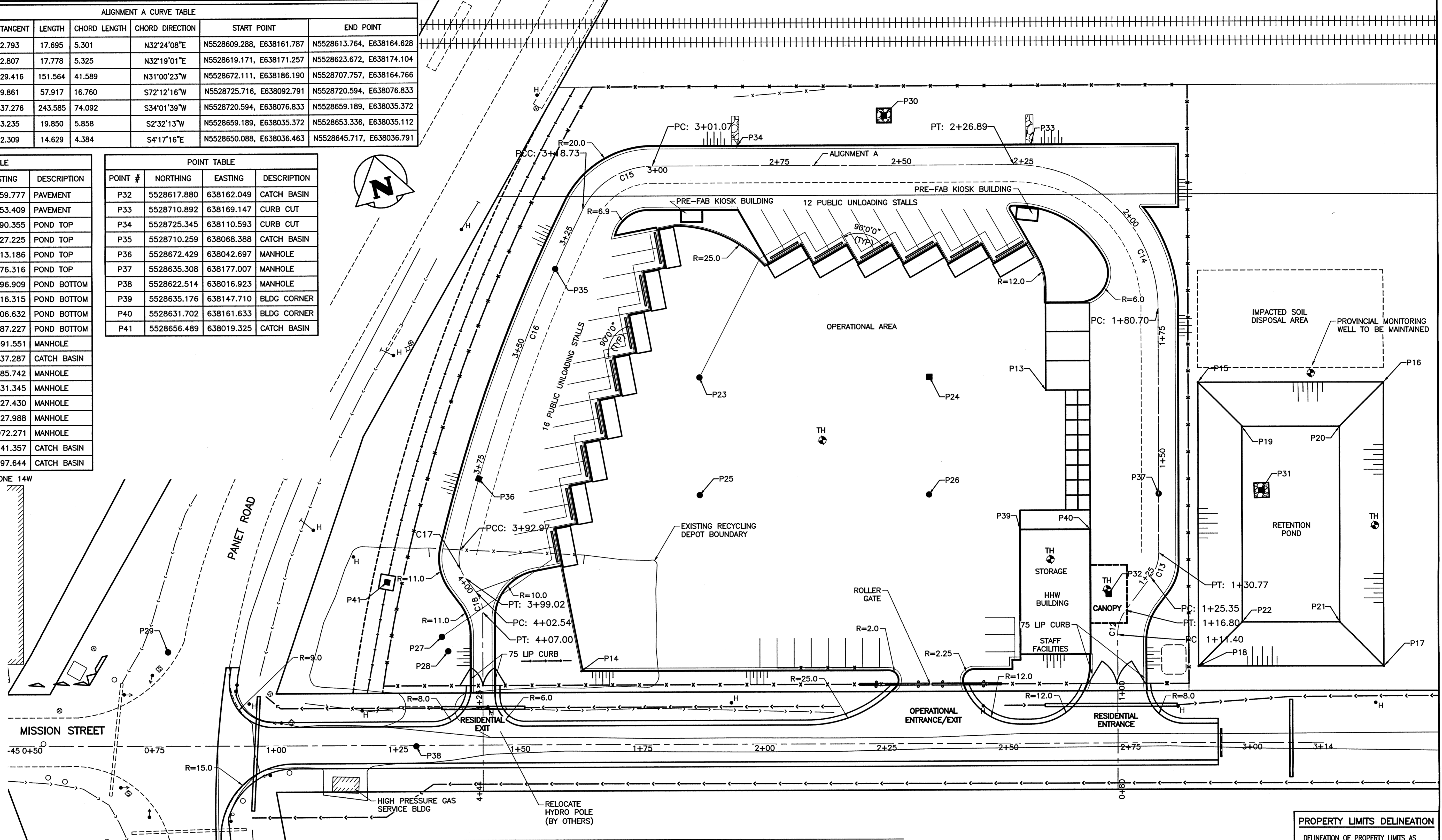
File name: P:\Projects\2016-0107-010-CALL - Tab:01 Plotted By: sgoel 17/03/23 [Thu 4:00pm]
 24x36 PLOT SCALE

ALIGNMENT A CURVE TABLE								
CURVE #	RADIUS	DELTA	TANGENT	LENGTH	CHORD LENGTH	CHORD DIRECTION	START POINT	END POINT
C12	8.400	36°47'20"	2.793	17.695	5.301	N32°24'08"E	N5528609.288, E638161.787	N5528613.764, E638164.628
C13	8.400	36°57'33"	2.807	17.778	5.325	N32°19'01"E	N5528619.171, E638171.257	N5528623.672, E638174.104
C14	29.399	90°01'53"	29.416	151.564	41.589	N31°00'23"W	N5528672.111, E638186.190	N5528707.757, E638164.766
C15	15.900	63°36'42"	9.861	57.917	16.760	S72°12'16"W	N5528725.716, E638092.791	N5528720.594, E638076.833
C16	333.843	12°44'32"	37.276	243.585	74.092	S34°01'39"W	N5528720.594, E638076.833	N5528659.189, E638035.372
C17	6.900	50°14'20"	3.235	19.850	5.858	S2°32'13"W	N5528659.189, E638035.372	N5528653.336, E638035.112
C18	6.982	36°35'31"	2.309	14.629	4.384	S4°17'16"E	N5528650.088, E638036.463	N5528645.717, E638036.791

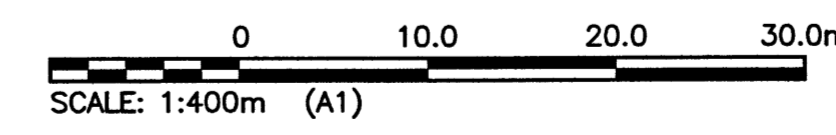
POINT TABLE			
POINT #	NORTHING	EASTING	DESCRIPTION
P13	5528661.437	638159.777	PAVEMENT
P14	5528629.036	638053.409	PAVEMENT
P15	5528655.336	638190.355	POND TOP
P16	5528646.138	638227.225	POND TOP
P17	5528589.863	638213.186	POND TOP
P18	5528599.060	638176.316	POND TOP
P19	5528644.425	638196.909	POND BOTTOM
P20	5528639.584	638216.315	POND BOTTOM
P21	5528600.773	638206.632	POND BOTTOM
P22	5528605.614	638187.227	POND BOTTOM
P23	5528681.360	638091.551	MANHOLE
P24	5528669.951	638137.287	CATCH BASIN
P25	5528658.074	638085.742	MANHOLE
P26	5528646.698	638131.345	MANHOLE
P27	5528642.863	638027.430	MANHOLE
P28	5528639.703	638027.988	MANHOLE
P29	5528653.610	637972.271	MANHOLE
P30	5528724.069	638141.357	CATCH BASIN
P31	5528630.843	638197.644	CATCH BASIN

POINT TABLE			
POINT #	NORTHING	EASTING	DESCRIPTION
P32	5528617.880	638162.049	CATCH BASIN
P33	5528710.892	638169.147	CURB CUT
P34	5528725.345	638110.593	CURB CUT
P35	5528710.259	638068.388	CATCH BASIN
P36	5528672.429	638042.697	MANHOLE
P37	5528635.308	638177.007	MANHOLE
P38	5528622.514	638016.923	MANHOLE
P39	5528635.176	638147.710	BLDG CORNER
P40	5528631.702	638161.633	BLDG CORNER
P41	5528656.489	638019.325	CATCH BASIN

COORDINATES IN UTM NAD83 ZONE 14W



PLAN
SCALE: 1:400



APEGN
 Certificate of Authorization
 KGS Group
 No. 245

- WARNING**
- NOTIFY THE GAS COMPANY OF THE PROPOSED LOCATION OF EXCAVATION.
 - TAKE PRECAUTION TO AVOID DAMAGE TO GAS COMPANY INSTALLATIONS.
 - SEE PROVINCIAL REGULATION 210/72 FOR DETAILS.
 - OBTAIN PERMITS PRIOR TO CONSTRUCTION.

PROPERTY LIMITS DELINEATION
 DELINEATION OF PROPERTY LIMITS AS SHOWN ON THIS DWG DOES NOT REPRESENT A "LEGAL SURVEY". KGS GROUP MAKES NO REPRESENTATION OR WARRANTY AS TO THE ACCURACY OF PROPERTY LIMITS DELINEATED ON THIS DWG, NOR ON THE DIMENSIONAL ACCURACY OF DWG FEATURES RELATIVE TO THOSE PROPERTY LIMITS.

METRIC
 WHOLE NUMBERS INDICATE MILLIMETRES
 DECIMALIZED NUMBERS INDICATE METRES

SYMBOL	DESCRIPTION	SYMBOL	DESCRIPTION	SYMBOL	DESCRIPTION	SYMBOL	DESCRIPTION
150 WM	WATER MAIN	150 WM	HYDRO	150 WM	WATER MAIN	150 WM	WATER MAIN
Hydrant	HYDRANT	M.T.S.	M.T.S.	Hydrant, Valve	HYDRANT, VALVE	Hydrant, Valve	HYDRANT, VALVE
Valve	VALVE	Concrete	CONCRETE	Land Drainage Sewer	LAND DRAINAGE SEWER	Land Drainage Sewer	LAND DRAINAGE SEWER
300 LBS	LAND DRAINAGE SEWER	Asphalt	ASPHALT	Waste Water Sewer	WASTE WATER SEWER	Waste Water Sewer	WASTE WATER SEWER
250 WWS	WASTE WATER SEWER	Sidewalk	SIDEWALK	Profile	PROFILE	Profile	PROFILE
Manhole	MANHOLE	Planing	PLANING	North/West Gutter	NORTH/WEST GUTTER	North/West Gutter	NORTH/WEST GUTTER
Catch Basin	CATCH BASIN	Property Line	PROPERTY LINE	South/East Gutter	SOUTH/EAST GUTTER	South/East Gutter	SOUTH/EAST GUTTER
Curb Inlet	CURB INLET	Survey Bar	SURVEY BAR	N/W, S/E R'S	N/W, S/E R'S	N/W, S/E R'S	N/W, S/E R'S
Junctions	JUNCTIONS	Ditch	DITCH	N/W, S/E TOP/CURB	N/W, S/E TOP/CURB	N/W, S/E TOP/CURB	N/W, S/E TOP/CURB
Culvert	CULVERT	Elevation	ELEVATION	North/West Ditch	NORTH/WEST DITCH	North/West Ditch	NORTH/WEST DITCH
Gas	GAS			South/East Ditch	SOUTH/EAST DITCH	South/East Ditch	SOUTH/EAST DITCH
Existing	LEGEND-PLAN	Proposed	PROPOSED	Existing	LEGEND-PROFILE	Proposed	PROPOSED

LOCATION APPROVED UNDERGROUND STRUCTURES		B.M.	ELEV.
Supv. U/G Structures Committee	DATE	33-014	231.421m
NOTE:	LOCATION OF UNDERGROUND STRUCTURES AS SHOWN ARE BASED ON THE BEST INFORMATION AVAILABLE BUT NO GUARANTEE IS GIVEN THAT ALL EXISTING UTILITIES ARE SHOWN OR THAT THE GIVEN LOCATIONS ARE EXACT. CONFIRMATION OF EXISTENCE AND EXACT LOCATION OF ALL SERVICES MUST BE OBTAINED FROM THE INDIVIDUAL UTILITIES BEFORE PROCEEDING WITH CONSTRUCTION.		
NO.	REVISIONS	DATE	BY
0	ISSUED FOR TENDER	17/03/23	PP

KGS GROUP CONSULTING ENGINEERS		DESIGNED BY		CHECKED BY	
DESIGNED BY	PP	CHECKED BY	PP	APPROVED BY	PP
DRAWN BY	SAG	RELEASER FOR CONSTRUCTION:		DATE	16/08/17
HOR. SCALE:	1:400	DATE			
VERTICAL:					

ENGINEER'S SEAL

 CONSULTANT PROJECT NO.
 16-0107-010

THE CITY OF WINNIPEG
 WATER AND WASTE DEPARTMENT

PROJECT TITLE
 4R WINNIPEG DEPOT
 EAST WINNIPEG COMMUNITY RESOURCE
 RECOVERY CENTRE
 SITE GEOMETRY

SHEET OF
 02 OF 41

COMPUTER FILE NAME
 16-0107-010

CONSULTANT DRAWING NUMBER
 C01