

- NOTES:
1. ALL WORK AND MATERIALS TO BE IN ACCORDANCE WITH THE LATEST REVISION OF THE CITY OF WINNIPEG STANDARD CONSTRUCTION SPECIFICATIONS.
  2. CONTRACTOR TO CONFIRM THE LOCATION OF ALL UTILITIES/SERVICES IN THE FIELD PRIOR TO CONSTRUCTION.
  3. ALL ROADWAY DIMENSIONS SHOWN ARE TO BACK OF CURB.
  4. ADD 200.00 TO ABBREVIATED ELEVATIONS TO OBTAIN GEODETIC ELEVATION.
  5. RENEW CURB AND SIDEWALK AS IDENTIFIED BY CONTRACT ADMINISTRATOR.
  6. ALL PRIVATE WALKWAYS TO BE ADJUSTED TO NEW SIDEWALK OR TOP OF CURB ELEVATION, AS REQUIRED.
  7. ADJUST MH FRAMES, CB RIMS, AND VALVES TO NEW GRADES, AS REQUIRED.
  8. MODIFIED BARRIER CURB TO BE CONSTRUCTED AT ALL INTERSECTION RADI AND BACK LANE RADI.
  9. INSTALL 40mm LIP CURB THROUGH ALL RESIDENTIAL APPROACHES.
  10. LAMP STANDARDS, HYDRO POLES, AND ANCHORS THAT REQUIRE TEMPORARY SUPPORT, REMOVAL OR REPLACEMENT, TO BE DONE SO AT THE EXPENSE OF THE CONTRACTOR AS NECESSARY.
  11. CONTRACTORS TO TAKE PRECAUTIONARY STEPS TO PROTECT EXISTING TREES WITHIN THE LIMITS OF CONSTRUCTION FROM DAMAGE FROM CONSTRUCTION ACTIVITIES AS OUTLINED IN THE SPECIFICATIONS.
  12. ALL BOULEVARDS TO BE SODDED UNLESS OTHERWISE NOTED.
  13. CURB 180mm REVEAL, UNLESS OTHERWISE NOTED.
  14. SIDEWALKS TO BE RENEWED WITH CONCRETE AS NOTED BY CONTRACT ADMINISTRATOR.

NOTE: These design documents are prepared solely for the use by the party with whom the design professional has entered into a contract and there are no representations of any kind made by the design professional to any party with whom the design professional has not entered into a contract.

LEGEND-PLAN	PROPOSED	EXISTING	LEGEND-PROFILE	PROPOSED	EXISTING
WATER MAIN			HYDRO POLE & LIGHT STANDARD		
LAND DRAINAGE SEWER			LIGHT STANDARD OR TRAFFIC SIGNAL		
WASTE WATER SEWER			HYDRO POLE		
HYDRO			CURB RAMP		
M.T.S.			DETECTABLE WARNING SURFACE TILE		
GAS			EDGE OF SIDEWALK		
SIGNALS			FENCE		
MANHOLE			PROPERTY LINE		
CATCH BASIN			EDGE OF ASPHALT		
CURB INLET			EDGE OF CONCRETE		
UTILITIES ADJUSTED			MODIFIED BARRIER CURB		
PLUG			BARRIER CURB		
HYDRANT			BARRIER CURB AND GUTTER		
VALVE			MODIFIED BARRIER CURB AND GUTTER		
CURB STOP			CONCRETE SIDEWALK		
GROUND GRADE			CONCRETE REPAIR		
(31.00) PAVEMENT GRADE			ASPHALT OVERLAY		
ANCHOR			ASPHALT PARTIAL DEPTH REPAIR		
#111 CIVIC ADDRESS			GLASS GRID		
IRON BAR			ASPHALT MILLING		
EXISTING					

LOCATIONS APPROVED UNDERGROUND STRUCTURES

SIGNED BY: \_\_\_\_\_ DATE: \_\_\_\_\_

SYMBOLS FOR UNDERGROUND STRUCTURES

LEGEND:

- NORTH OR WEST SIDEWALK
- SOUTH OR EAST SIDEWALK
- ROADWAY CENTRELINE
- NORTH OR WEST GUTTER
- SOUTH OR EAST GUTTER

LOCATION OF UNDERGROUND STRUCTURES AS SHOWN ARE BASED ON THE BEST INFORMATION AVAILABLE BUT NO GUARANTEE IS GIVEN THAT ALL EXISTING UTILITIES ARE SHOWN OR THAT THE GIVEN LOCATIONS ARE EXACT CONFIRMATION OF EXISTENCE AND EXACT LOCATION OF ALL SERVICES BEFORE PROCEEDING

BENCHMARK LOCATION: TOP OF TOP NUT ON FIRST HYDRANT WEST OF PLESSIS ROAD AND ON THE NORTH SIDE OF KERNAGHAN AVENUE IN FRONT OF #811

ELEV. 232.909

WSP Canada Group Limited  
Suite 111 - 93 Lombard Ave  
Winnipeg, MB R3B 3B1  
T. 204.943.3178  
F. 204.943.4948  
www.wsp.com

DESIGNED BY: JM

CHECKED BY: JP/TR

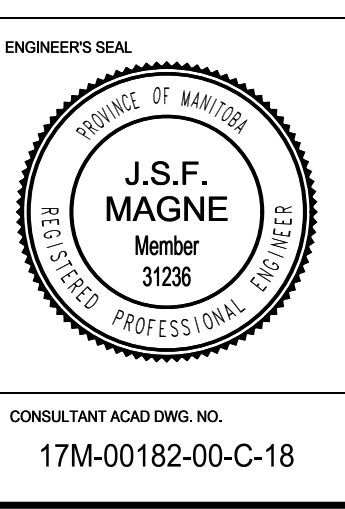
DRAWN BY: VA/SB

APPROVED BY: VM

HOR. SCALE: 1:250

VERTICAL SCALE: 1:10

RELEASED FOR CONSTRUCTION: 22-FEB-17



THE CITY OF WINNIPEG  
PUBLIC WORKS DEPARTMENT  
ENGINEERING DIVISION

2017 LOCAL STREET RENEWAL PROGRAM

KERNAGHAN AVENUE  
ROBSON STREET TO PLESSIS ROAD  
PAVEMENT RECONSTRUCTION  
STA. 2+40 TO STA. 2+85.80

CITY DRAWING NUMBER: SHEET 18 OF 21

BID NO. 366-2017

CONSULTANT ACAD DWG. NO. 17M-00182-00-C-18

PRELIMINARY

METRIC

WHOLE NUMBERS INDICATE MILLIMETRES  
DECIMALIZED NUMBERS INDICATE METRES

APEGM  
Certificate of Authorization  
MMM Group Limited  
No. 4531

May 15, 2017 - 12:32pm  
 P:\2017\17M-00182-00-17-C-18 Kernaghan Avenue Plan and Profile 2017.05.15.dwg - tab-C-18