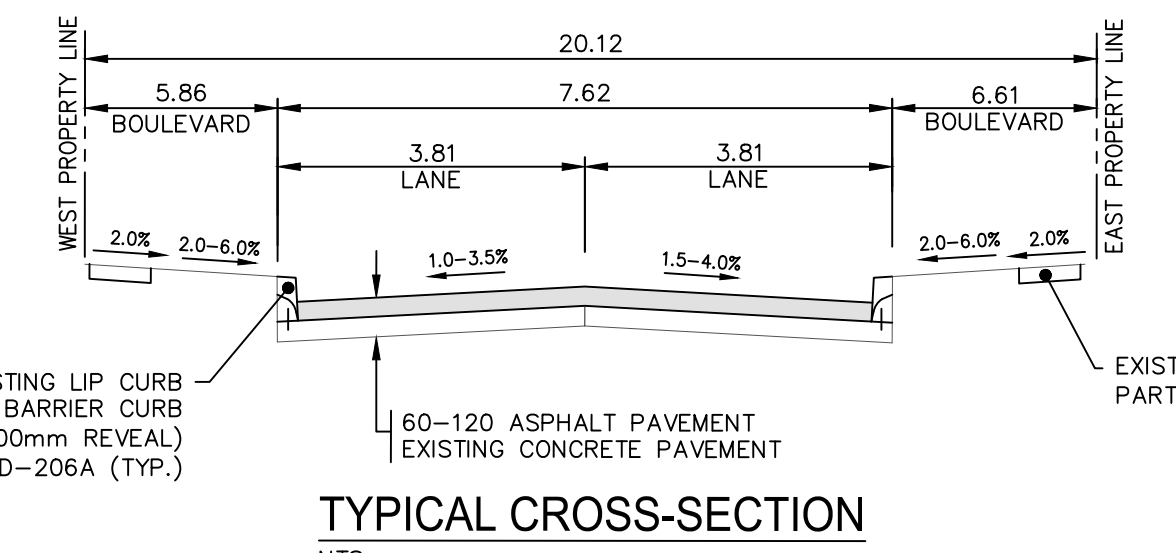
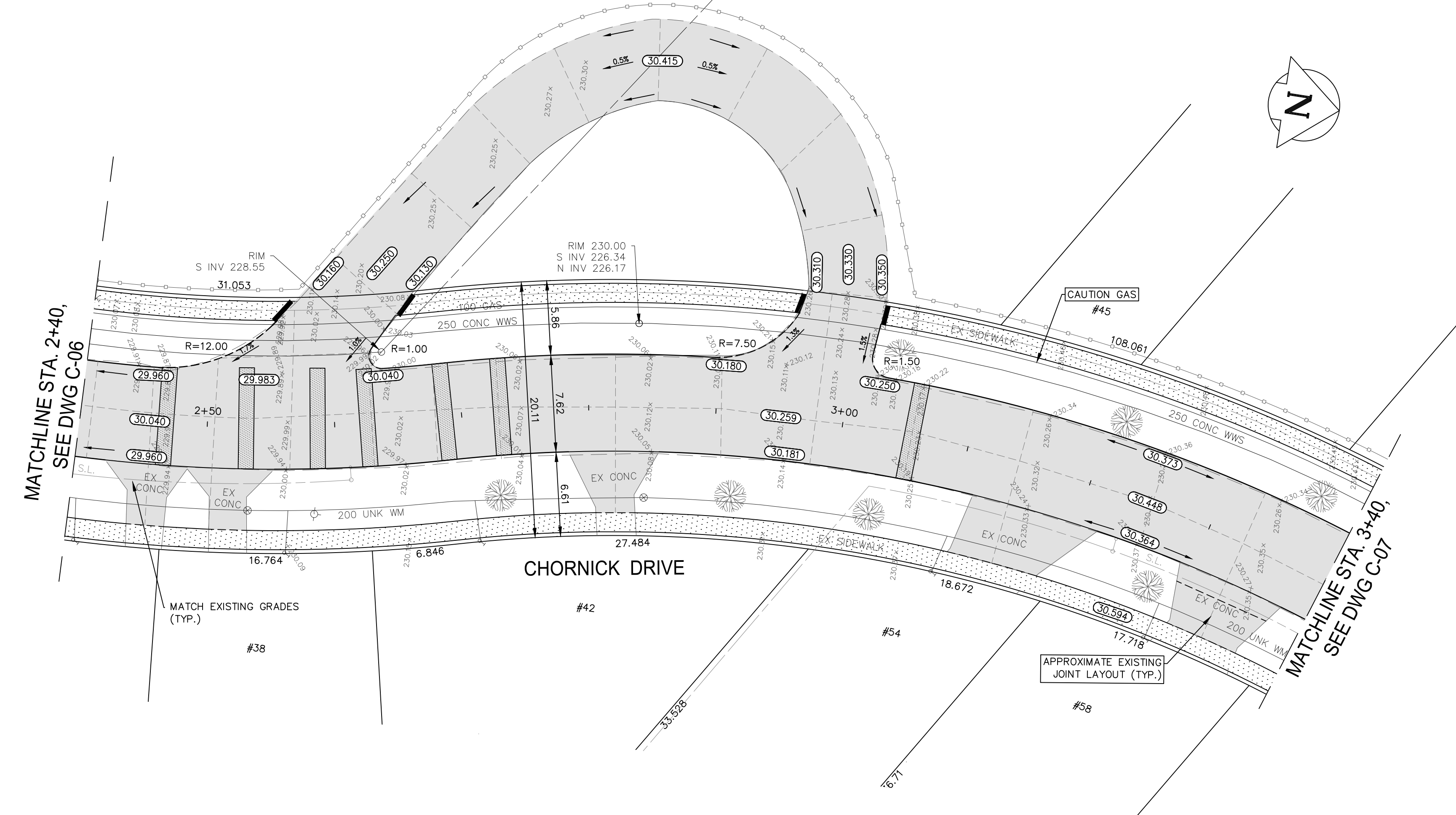
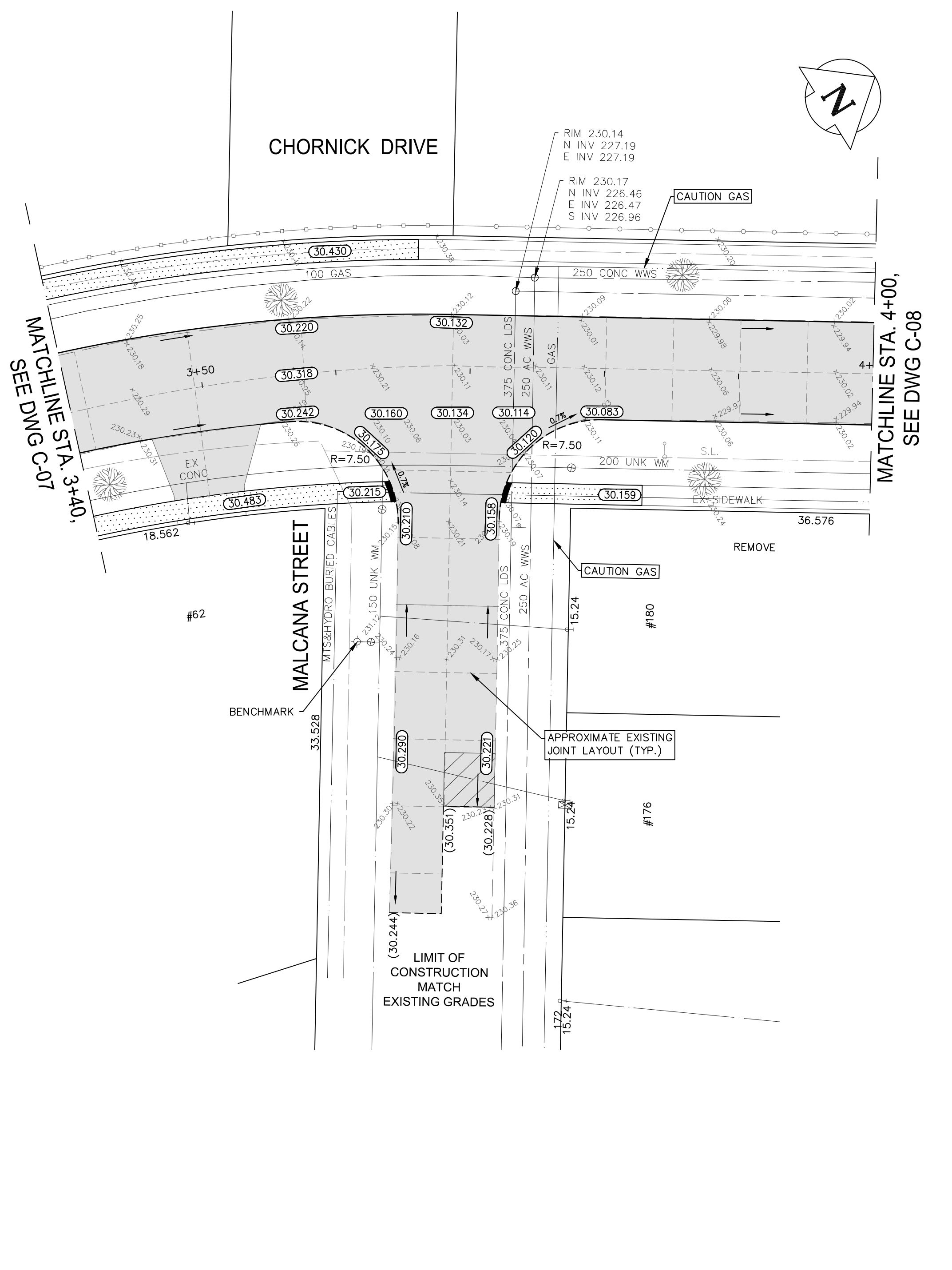


May 15, 2017 - 12:06pm
 P:\2017\17M-00182-00-C-09 - 2017 Local Streets Renewal\17M-00182-00-C-09 - Chornick Drive Plan and Profile - 2017.05.15.dwg - tab:C-09

NOTE: These design documents are prepared solely for the use by the party with whom the design professional has entered into a contract and there are no representations of any kind made by the design professional to any party with whom the design professional has not entered into a contract.

EXISTING	LEGEND-PLAN	PROPOSED	EXISTING	LEGEND-PLAN	PROPOSED	EXISTING	LEGEND-PROFILE	PROPOSED
---	WATER MAIN	---	---	HYDRO POLE & LIGHT STANDARD	---	---		
---	LAND DRAINAGE SEWER	---	---	LIGHT STANDARD OR TRAFFIC SIGNAL	---	---		
---	WASTE WATER SEWER	---	---	HYDRO POLE	---	---		
---	HYDRO	---	---	CURB RAMP	---	---		
---	M.T.S.	---	---	DETECTABLE WARNING SURFACE TILE	---	---		
---	GAS	---	---	EDGE OF SIDEWALK	---	---		
---	SIGNALS	---	---	FENCE	---	---		
○	MANHOLE	●	---	PROPERTY LINE	---	---		
□	CATCH BASIN	■	---	EDGE OF ASPHALT	---	---		
△	CURB INLET	▽	---	EDGE OF CONCRETE	---	---		
---	UTILITIES ADJUSTED	△ □ ○	---	MODIFIED BARRIER CURB	---	---		
---	PLUG	---	---	BARRIER CURB	---	---		
---	HYDRANT	---	---	BARRIER CURB AND GUTTER	---	---		
---	VALVE	---	---	MODIFIED BARRIER CURB AND GUTTER	---	---		
---	CURB STOP	---	---	CONCRETE SIDEWALK	---	---		
---	GROUND GRADE	---	---	CONCRETE REPAIR	---	---		
---	PAVEMENT GRADE	---	---	ASPHALT OVERLAY	---	---		
---	ANCHOR	---	---	ASPHALT PARTIAL DEPTH REPAIR	---	---		
---	CIVIC ADDRESS	---	---	GLASS GRID	---	---		
---	IRON BAR	---	---	ASPHALT MILLING	---	---		



- NOTES:
- ALL WORK AND MATERIALS TO BE IN ACCORDANCE WITH THE LATEST REVISION OF THE CITY OF WINNIPEG STANDARD CONSTRUCTION SPECIFICATIONS.
 - CONTRACTOR TO CONFIRM THE LOCATION OF ALL UTILITIES/SERVICES IN THE FIELD PRIOR TO CONSTRUCTION.
 - ALL ROADWAY DIMENSIONS SHOWN ARE TO BACK OF CURB.
 - ADD 200.00 TO ABBREVIATED ELEVATIONS TO OBTAIN GEODETTIC ELEVATION.
 - PAVEMENT REPAIRS SHOWN ARE ONLY A REPRESENTATIVE APPROXIMATION OF THE TENDERED QUANTITIES.
 - RENEW CURB AND SIDEWALK AS IDENTIFIED BY CONTRACT ADMINISTRATOR.
 - ALL PRIVATE WALKWAYS TO BE ADJUSTED TO NEW SIDEWALK OR TOP OF CURB ELEVATION, AS REQUIRED.
 - MODIFIED BARRIER CURB TO BE CONSTRUCTED AT ALL INTERSECTION RADII AND BACK LANE RADII.
 - INSTALL 40mm LIP CURB THROUGH ALL RESIDENTIAL APPROACHES.
 - LAMP STANDARDS, HYDRO POLES, AND ANCHORS THAT REQUIRE TEMPORARY SUPPORT, REMOVAL OR REPLACEMENT, TO BE DONE SO AT THE EXPENSE OF THE CONTRACTOR AS NECESSARY.
 - CONTRACTORS TO TAKE PRECAUTIONARY STEPS TO PROTECT EXISTING TREES WITHIN THE LIMITS OF CONSTRUCTION FROM DAMAGE FROM CONSTRUCTION ACTIVITIES AS OUTLINED IN THE SPECIFICATIONS.
 - ALL BOULEVARDS TO BE SODDED UNLESS OTHERWISE NOTED.
 - TRAFFIC SERVICES TO PAINT TRAFFIC LINES AND BICYCLE LANE MARKINGS (IF REQUIRED).
 - CONTRACTOR TO CONFIRM LOCATION AND LIMITS OF SEWER REPAIRS BY PERFORMING VIDEO INSPECTION AND REVIEWING WITH CONTRACT ADMINISTRATOR PRIOR TO CONSTRUCTION (IF REQUIRED).

NO.	REVISIONS	DATE	BY
A	ISSUED FOR CLIENT REVIEW	21-APR-17	JP
B	ISSUED FOR UNDERGROUND STRUCTURES REVIEW	04-MAY-17	JP
C	ISSUED FOR TENDER	24-MAY-17	JP

wsp
 WSP Canada Group Limited
 Suite 111 - 93 Lombard Ave
 Winnipeg, MB R3B 3B1
 t. 204.943.3178
 f. 204.943.4948
 www.wsp.com

ENGINEERS SEAL
V.M. MAROTI
 Member
 38809
 REGISTERED PROFESSIONAL ENGINEER

THE CITY OF WINNIPEG
 PUBLIC WORKS DEPARTMENT
 ENGINEERING DIVISION
 2017 LOCAL STREET RENEWAL PROGRAM
 CHORNICK DRIVE
 McIVOR AVENUE TO GILMORE AVENUE
 PAVEMENT REHABILITATION
 MALCANA STREET AND PARK LOOP PLAN

PRELIMINARY
METRIC
 WHOLE NUMBERS INDICATE MILLIMETRES
 DECIMALIZED NUMBERS INDICATE METRES
APEGM
 Certificate of Authorization
 MMM Group Limited
 No. 4531

CITY DRAWING NUMBER	SHEET 9 OF 21
BID NO.	366-2017