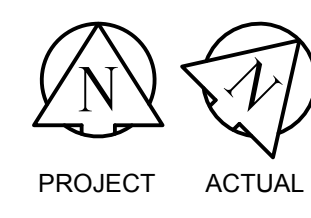
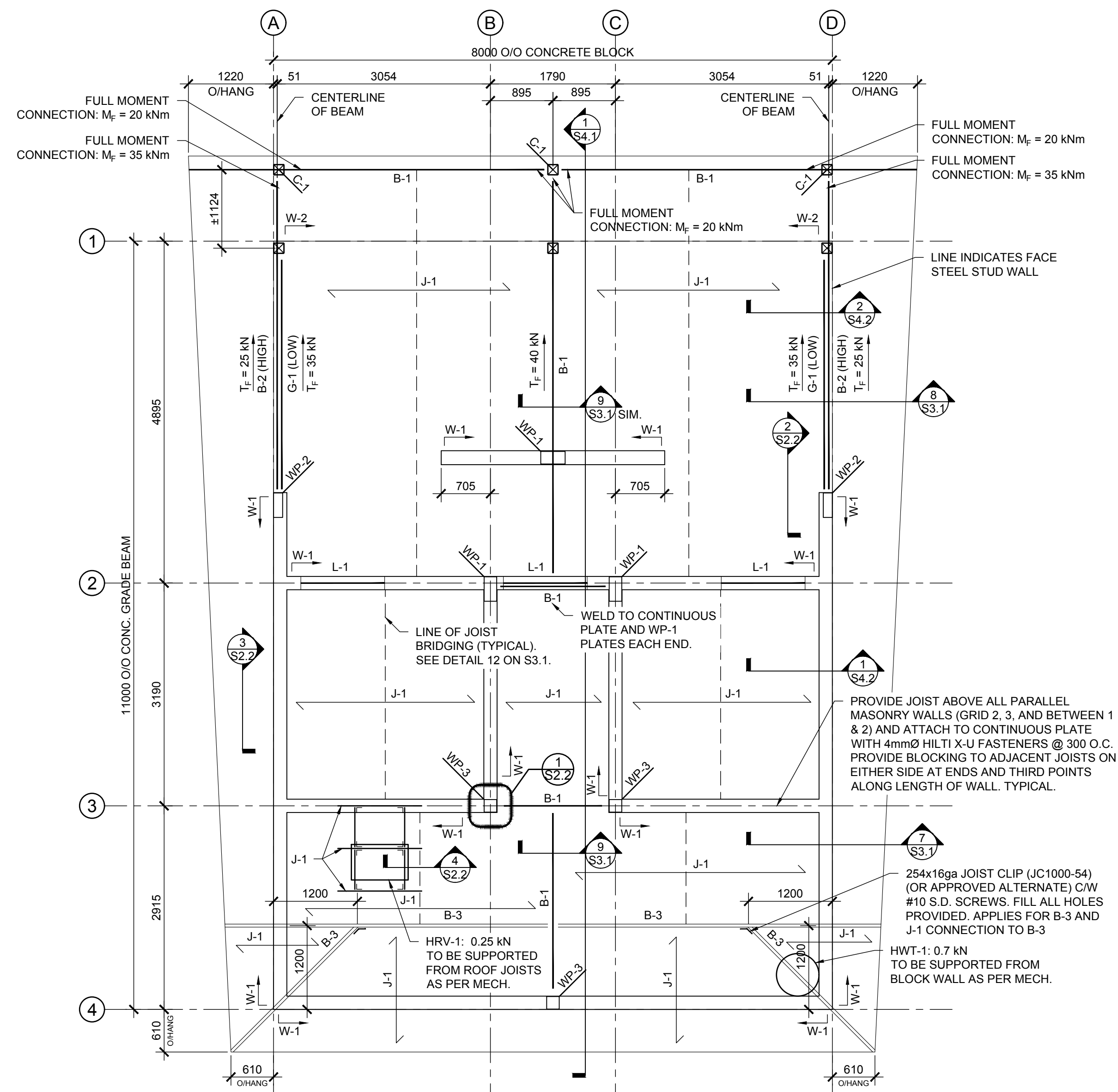


ALL DRAWINGS AND SPECIFICATIONS ARE THE PROPERTY OF THE CONSULTANT. NO REPRODUCTIONS MAY BE MADE WITHOUT THE CONSENT OF THE CONSULTANT AND ALL REPRODUCTIONS MUST BEAR THE NAME OF THE CONSULTANT. THE CONTRACTOR SHALL VERIFY ALL DIMENSIONS, DATUMS AND LEVELS NOTED ON THE DRAWINGS WITH THE CONDITIONS ON SITE AND SHALL BE RESPONSIBLE FOR REPORTING ANY ERRORS OR OMISSIONS TO THE ENGINEER FOR ADJUSTMENTS. THIS DRAWING SHALL NOT BE SCALED.



**ROOF FRAMING PLAN**  
SCALE: 1:50

**COORDINATE CORE-FILLING WITH ELECTRICAL BEFORE CONCRETE INSTALLATION OF MASONRY WALLS**

**ROOF LOADING:**  
DEAD LOAD = 1.20 kPa  
LIVE LOAD = 1.72 kPa

**PLAN NOTES:**  
- SEE PLANS, SECTIONS, DETAILS, AND ARCH. DRAWINGS FOR T.O. STEEL ELEV.  
- GRIDS ARE FACE OR CENTER OF BLOCK/GRADE BEAMS TYPICAL U/N  
- CONFIRM OPENING LOCATIONS IN ROOF SHEATHING WITH ARCHITECTURAL AND MECHANICAL DRAWINGS.  
- CONFIRM WEIGHT, SIZE, AND LOCATION OF ALL MECHANICAL AND ELECTRICAL UNITS BEING SUPPORTED ON OR HUNG FROM ROOF JOISTS WITH MECHANICAL AND ELECTRICAL DRAWINGS.  
- COORDINATE ALL MISCELLANEOUS STEEL WITH ARCHITECTURAL DRAWINGS.

| WELD PLATE SCHEDULE |   |
|---------------------|---|
| MARK                | DESCRIPTION   |
| WP-1                | 350x180x13 WELD PLATE<br>C/W 2-130x300 LONG NELSON STUDS  |
| WP-2                | 350x130x13 WELD PLATE<br>C/W 2-130x300 LONG NELSON STUDS<br>OFFSET NELSON STUDS FROM<br>CENTRE OF PLATE AS REQUIRED |
| WP-2                | 180x180x13 WELD PLATE<br>C/W 1-130x300 LONG NELSON STUD   |

| JOIST SCHEDULE |   |
|----------------|---|
| MARK           | DESCRIPTION   |
| J-1            | 254 x 51 x 16ga. STEEL JOISTS (1000S200-54) @ 600 O.C.<br>13 EXTERIOR PLYWOOD SHEATHING |

| GIRT SCHEDULE |                 |
|---------------|-----------------|
| MARK          | DESCRIPTION     |
| G-1           | HSS 102x102x6.4 |

NOTE:  
- GIRTS CONNECTIONS TO BE ABLE TO SUPPORT GRAVITY, TENSION, AND WIND LOADS AS REQUIRED.

| BEAM SCHEDULE |  |
|---------------|--|
| MARK          | DESCRIPTION  |
| B-1           | HSS 152x152x6.4  |
| B-2           | HSS 152x102x13 (LLV)   |
| B-3           | TWO PLY 254x51x16ga (1000S200-54).<br>CONNECT PLYS WITH 3 - #8 S.D. SCREWS @ 600 O.C. MAX. |

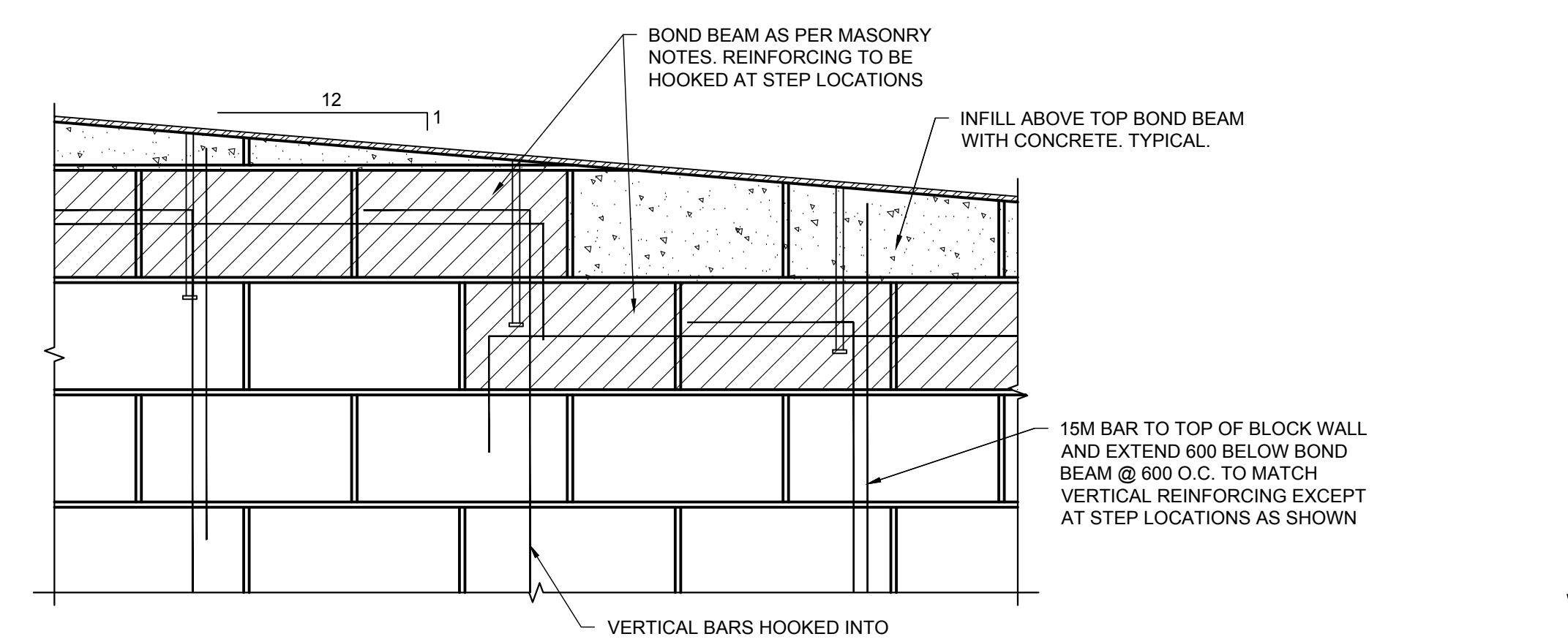
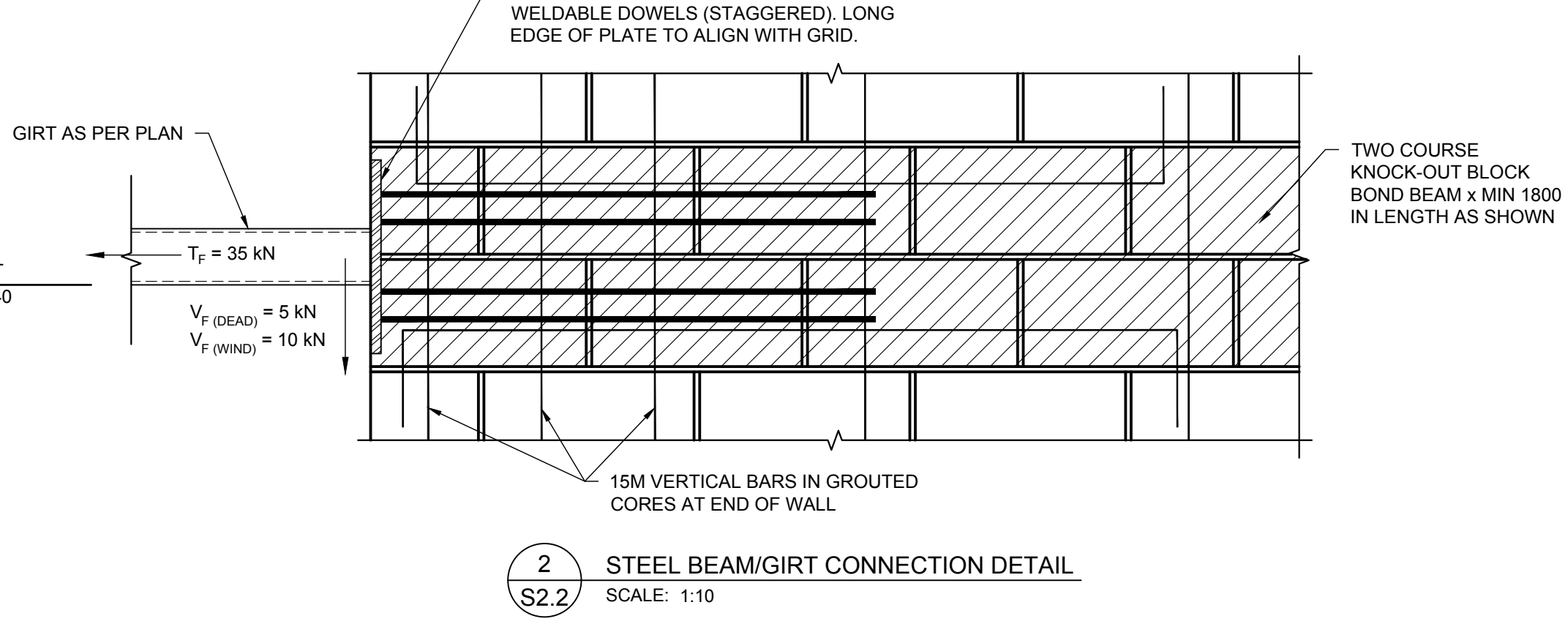
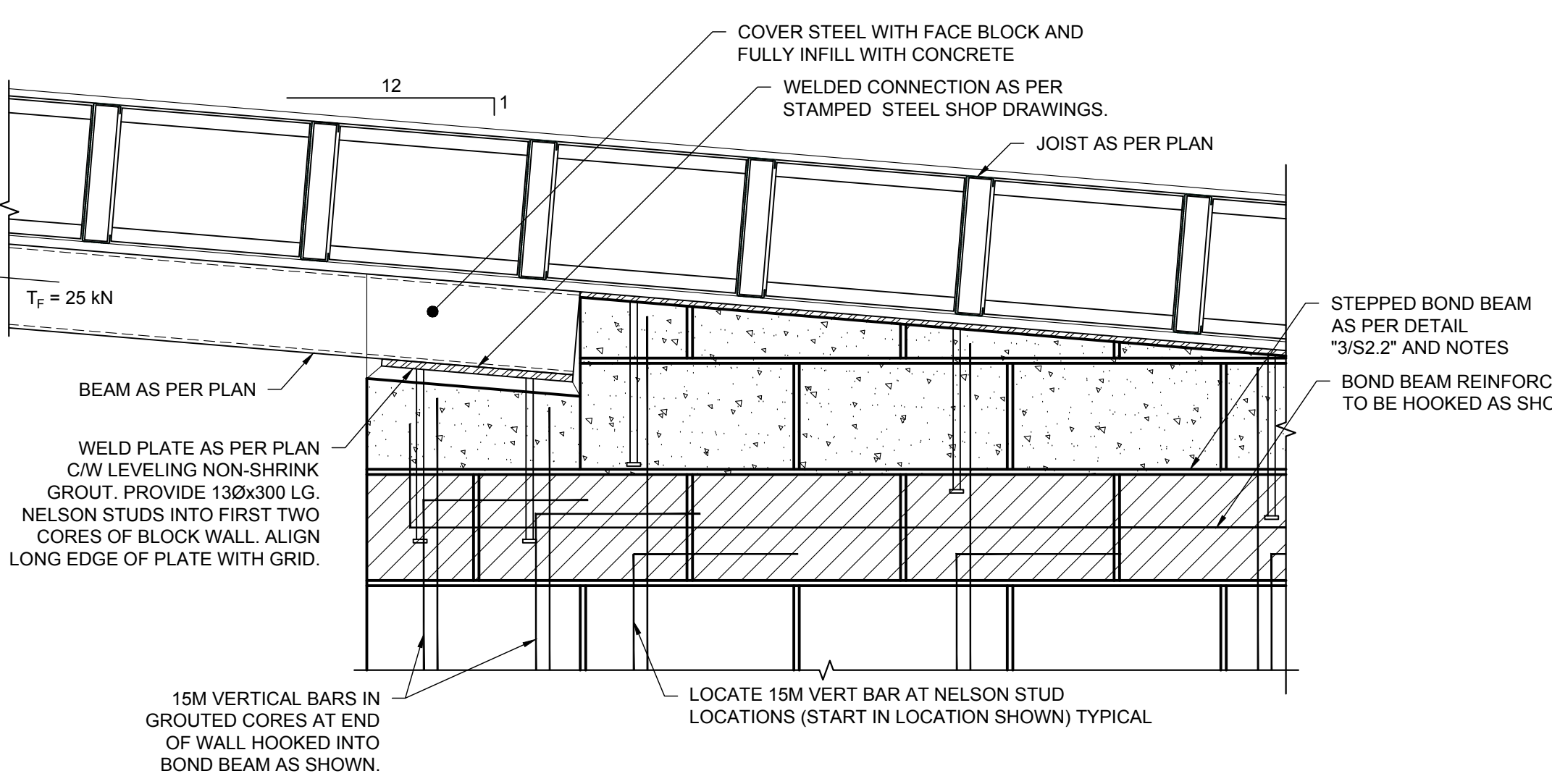
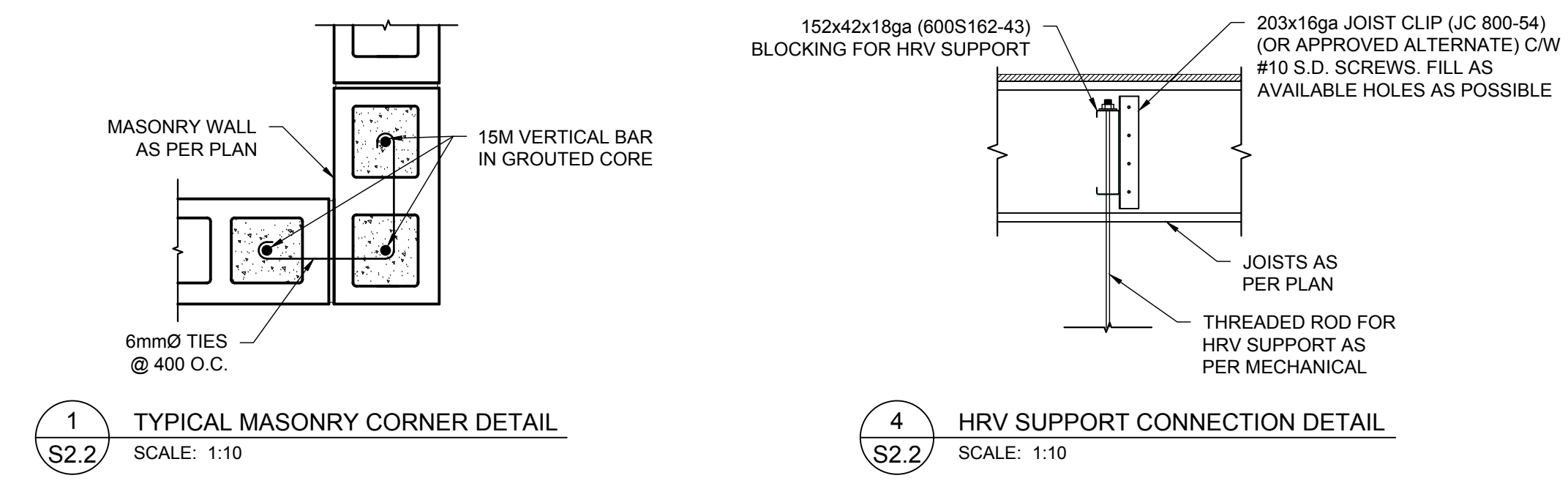
| WALL SCHEDULE |   |
|---------------|---|
| MARK          | DESCRIPTION   |
| W-1           | 190 MASONRY BLOCK, 1-15M VERTICAL BAR IN EVERY THIRD CORE (600 O.C.), AT TWO END CORES, AND EACH SIDE OF OPENINGS WITH GROUDED CORES. REFER TO "1/S2.2" FOR CORNER REINFORCING DETAILS. |
| W-2           | 203x42x18ga. STEEL STUDS (800S162-43) @ 400 O.C. 13 EXTERIOR PLYWOOD SHEATHING  |

NOTE:  
INCREASE SLIGHTLY FOR ROUGH OPENING REQUIREMENTS. COORDINATE R.O. LOCATIONS AND STANDING SEAM LAYOUT WITH ARCH.

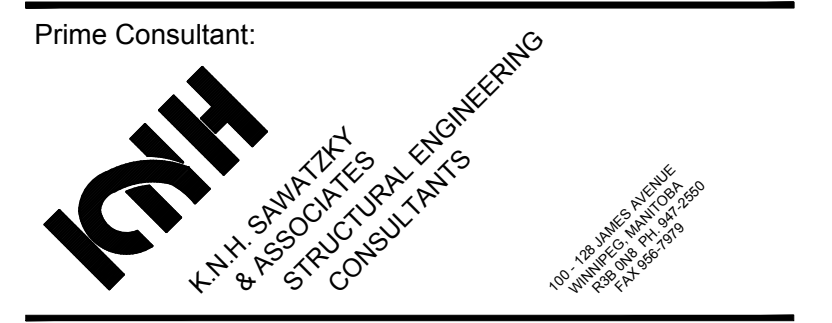
| LINTEL SCHEDULE |  |
|-----------------|--|
| MARK            | DESCRIPTION  |
| L-1             | 190 WIDE CONCRETE FILLED MASONRY DOUBLE (2 COURSE) KNOCK-OUT BLOCK REINF: 1-15M BAR TOP AND BOTTOM OF BLOCK, 10M VERTICAL TIES @ 6" O.C. EXTEND REINF. MIN. 8" BEYOND EDGE OF LINTEL |

| COLUMN SCHEDULE |                 |
|-----------------|-----------------|
| MARK            | DESCRIPTION     |
| C-1             | HSS 152x152x9.5 |

NOTES:  
- ALL CAP AND BASE PLATES ARE TO BE 20 THICK U/N.  
- PROVIDE 25 NON-SHRINK GROUT BELOW ALL BASEPLATES.  
- PROVIDE 4-200x450 LONG A307 ANCHOR BOLTS C/W 75 HOOK FOR EACH COLUMN U/N.



| Revisions |                         |
|-----------|-------------------------|
| Date      | Revision                |
| 17.05.30  | ISSUED FOR CONSTRUCTION |



Northern Sky Architecture Inc.  
100 - 129 James Avenue  
Winnipeg, Manitoba, Canada  
R3S 0P4  
NORTHERNSKY@compuserve.com  
Tel: 204.962.7929  
204.943.6767

Stamp: PROVINCE OF MANITOBA  
May 30, 2017  
REGISTERED PROFESSIONAL ENGINEER  
30986

Stamp: STRUCTURAL ONLY  
- CONTACT ENGINEER WHEN INSPECTIONS ARE REQUIRED

Project  
**La Barriere Park Washroom Replacement**  
La Barriere Park, Manitoba

| drawing title |          |             |           |
|---------------|----------|-------------|-----------|
| scale         | as noted | designed by | js/mi     |
| date          | May 2017 | drawn by    | js        |
| project no.   | 337-2017 | approved by | mi        |
| reference no. | 16.235   | sheet       | S2.2 REV. |

**APEGM**  
Certificate of Authorization  
KNH Sawatzky & Associates Ltd.  
No. 1193 Date: May 30, 2017