

0+97.45 CONNECT TO EXIST 300 & 150 WMS  
 0+98.44 REMOVE EXIST HYDRANT ASSEMBLY  
 0+98.44 REMOVE EXIST HYDRANT ASSEMBLY  
 1+00.00 W P PRINCESS ST  
 1+00.03 ABANDON EXIST 300 VALVE  
 1+00.03 INSTALL 300 VALVE  
 1+00.03 ABANDON EXIST 150 VALVE  
 1+02.80 EXIST 150-45° BEND  
 1+06.63 EXIST 300X300X300 TEE  
 1+06.63 EXIST 300X300X250 TEE  
 1+14.35 EXIST 150X150X100 CROSS  
 1+16.41 INSTALL 300X300X300 TEES (2)  
 1+20.11 INSTALL 300 VALVE  
 1+20.113 E P PRINCESS ST  
 1+20.46 ABANDON EXIST 250 VALVE  
 1+25  
 1+27.51 ABANDON EXIST 100 VALVE

1+93.51 EXIST 250 BEND  
 1+94.88 REMOVE EXIST 250 BEND  
 1+95.18 EXIST 250X250X250 TEE  
 1+95.18 EXIST 100 90° BEND  
 1+95.91 CONNECT TO EXIST 300 WM  
 1+96.61 EXIST HYDRANT ASSEMBLY  
 2+00.00 EXIST 300 VALVE  
 2+00.898 W P KING ST  
 2+16.20 EXIST 300X300X200 TEE  
 2+20.810 E P KING ST

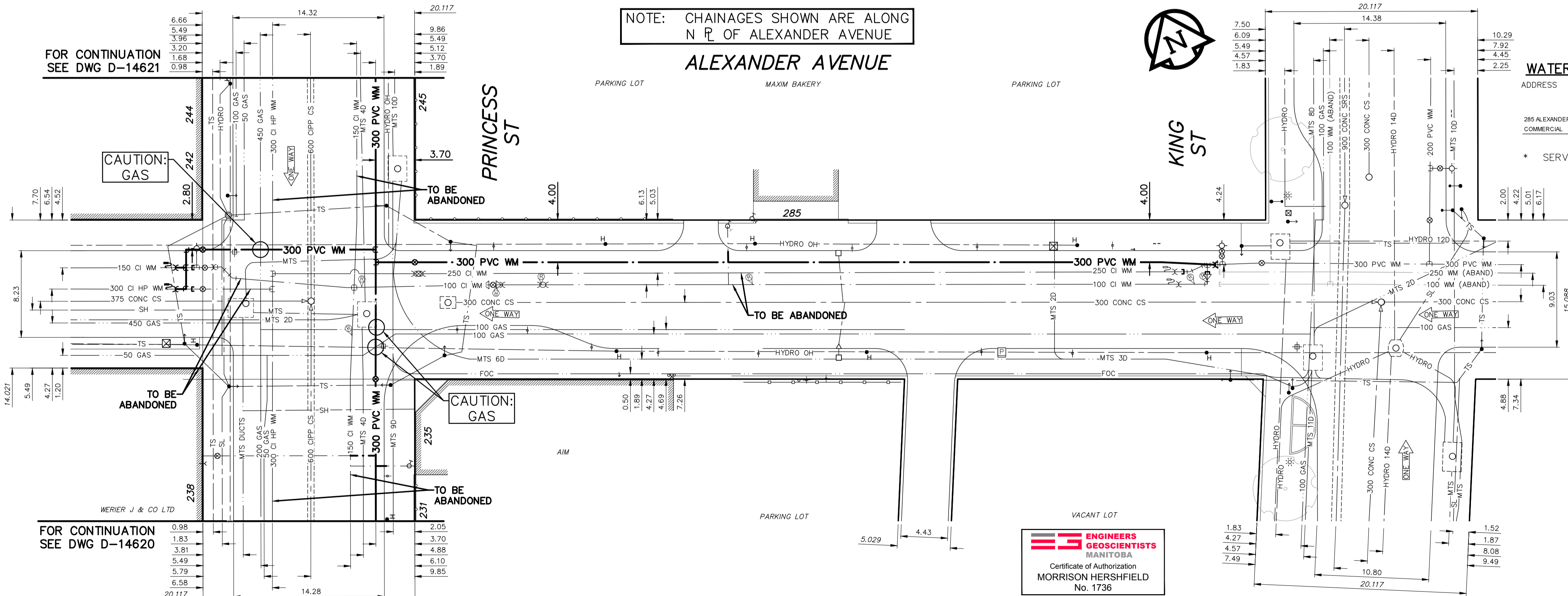
NOTE: CHAINAGES SHOWN ARE ALONG  
 N P OF ALEXANDER AVENUE

ALEXANDER AVENUE

WATER SERVICE INFORMATION

ADDRESS	SIZE (mm)	SIZE (mm)	SHORT & LONG	CORP. LOCATION	REMARKS
	MATERIAL	MATERIAL	MEASUREMENT		
(STREET)	(PROP.)	(PROP.)			
285 ALEXANDER	25	25	0.6 WEIR	1.1 W OF S.C.	RECONNECT SERVICE
COMMERCIAL	CU	CU	28.0 EEL PRINCESS		NEW SERVICE OCT 2003

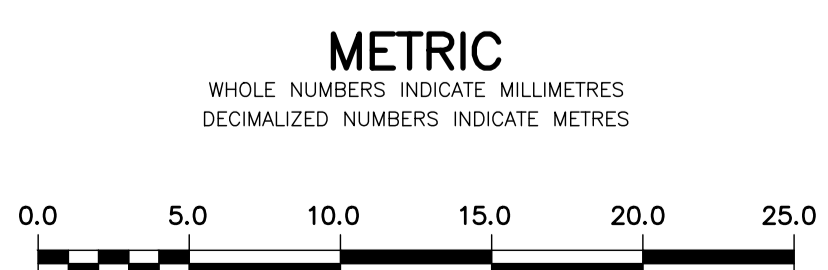
\* SERVICES TO BE RENEWED TO P. ALL OTHERS TO BE RECONNECTED



ENGINEERS  
 GEOSCIENTISTS  
 MANITOBA  
 Certificate of Authorization  
 MORRISON HERSHFIELD  
 No. 1736

FOR INDEX SEE  
 D-14618

NOTE: ALL VALVES TO BE INSTALLED  
 COUNTERCLOCKWISE TO CLOSE



**WARNING**  
 IF POWER EQUIPMENT OR EXPLOSIVES  
 ARE TO BE USED FOR EXCAVATION ON THIS  
 PROJECT THE CONTRACTOR MUST:  
 1) NOTIFY THE GAS COMPANY OF THE  
 PROPOSED LOCATION OF EXCAVATION.  
 2) TAKE PRECAUTION TO AVOID DAMAGE TO  
 GAS COMPANY INSTALLATIONS.  
 SEE PROVINCIAL REGULATION 210/72 FOR DETAILS

**LOCATION APPROVED**  
 UNDERGROUND STRUCTURES  
 SUPP. U/G STRUCTURES COMMITTEE DATE  
 NOTE:  
 LOCATION OF UNDERGROUND STRUCTURES AS  
 SHOWN ARE BASED ON THE BEST INFORMATION  
 AVAILABLE BUT NO GUARANTEE IS GIVEN THAT ALL  
 EXISTING UTILITIES ARE SHOWN OR THAT THE GIVEN  
 LOCATIONS ARE EXACT. CONFIRMATION OF  
 EXISTENCE AND EXACT LOCATION OF ALL  
 SERVICES MUST BE OBTAINED FROM THE INDIVIDUAL  
 UTILITIES BEFORE PROCEEDING WITH CONSTRUCTION.

B.M. 35-004	Tbit. in N. wall of City Administration
ELEV. 232.156	Bldg., 0.6 m E. of W. entrance on James St.
NO.	REVISIONS
DATE	BY

DESIGNED BY	JKH	CHECKED BY	HAK
DRAWN BY	DML	APPROVED BY	BWB
SCALE:	HORIZONTAL 1:250	RELEASED FOR CONSTRUCTION	KAS ZUREK
DATE	2017 03 09	DATE	2017 04 20

ENGINEER'S SEAL  
 ORIGINAL SIGNED  
 BY H.A. KATZ  
 2017 04 20

**THE CITY OF WINNIPEG**  
 WATER AND WASTE DEPARTMENT  
 ENGINEERING DIVISION  
 2017 WATER MAIN RENEWALS  
 CONTRACT 7  
 ALEXANDER AVENUE  
 PRINCESS STREET TO  
 KING STREET

SHEET 12 OF 14  
 CITY DRAWING NUMBER  
 D-14628