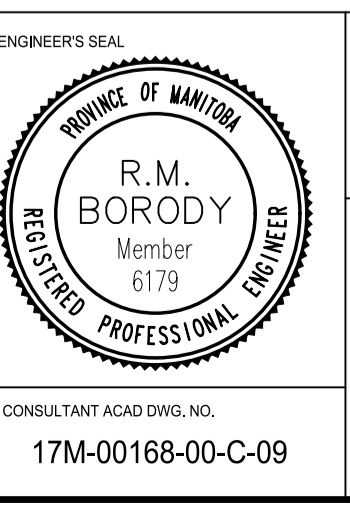


NOTE:
These design documents are prepared solely for the use by the party with whom the design professional has entered into a contract and there are no representations of any kind made by the design professional to any party with whom the design professional has not entered into a contract.

EXISTING	PROPOSED	EXISTING	PROPOSED	EXISTING	PROPOSED
WATER MAIN	ANCHOR	ANCHOR	ANCHOR	ANCHOR	ANCHOR
LAND DRAINAGE SEWER	CIVIC ADDRESS	#111	CIVIC ADDRESS		
WASTE WATER SEWER	IRON BAR	⊕	IRON BAR		
HYDRO	HYDRO POLE & LIGHT STANDARD	⊕	HYDRO POLE & LIGHT STANDARD		
M.T.S.	LIGHT STANDARD	⊕	LIGHT STANDARD		
GAS	HYDRO POLE	⊕	HYDRO POLE		
SIGNALS	TRAFFIC SIGNAL	⊕	TRAFFIC SIGNAL		
MANHOLE	DETECTABLE WARNING TILE	⊕	DETECTABLE WARNING TILE		
CATCH BASIN	CURB RAMP	⊕	CURB RAMP		
CURB INLET	EDGE OF SIDEWALK	⊕	EDGE OF SIDEWALK		
UTILITIES ADJUSTED	PROPERTY LINE	⊕	PROPERTY LINE		
PLUG	FENCE	⊕	FENCE		
HYDRANT	EDGE OF ASPHALT	⊕	EDGE OF ASPHALT		
VALVE	BARRIER CURB	⊕	BARRIER CURB		
CURB STOP	MODIFIED BARRIER CURB	⊕	MODIFIED BARRIER CURB		
GROUND GRADE	SIDEWALK REPAIRS	⊕	SIDEWALK REPAIRS		
PAVEMENT GRADE	CONCRETE SLAB REPAIR	⊕	CONCRETE SLAB REPAIR		
LOT GRADE	MILLED SURFACE	⊕	MILLED SURFACE		
EXISTING	ASPHALT	⊕	ASPHALT		
LEGEND-PLAN	LEGEND-PROFILE	⊕	LEGEND-PROFILE		

LOCATIONS APPROVED UNDERGROUND STRUCTURES		BENCHMARK LOCATION	
SIGNED BY:	DATE:	ELEV. 232.351	LOCATED ON TOP OF TOP NUT ON HYDRANT AT SOUTHEAST CORNER OF ROSLYN ROAD AND DRYCE STREET
LOCATION OF UNDERGROUND STRUCTURES AS SHOWN ARE BASED ON THE BEST INFORMATION AVAILABLE BUT NO GUARANTEE IS GIVEN THAT ALL EXISTING UTILITIES ARE SHOWN OR THAT THE GIVEN LOCATIONS ARE EXACT CONFIRMATION OF EXISTENCE AND EXACT LOCATION OF ALL SERVICES MUST BE OBTAINED FROM THE INDIVIDUAL UTILITIES BEFORE PROCEEDING			

MMM GROUP		MMM Group Limited	
DESIGNED BY	SG	Suite 111 - 93 Lombard Ave.	Winnipeg, MB R3B 3B1
DRAWN BY	LT	t. 204.943.3178	f. 204.943.4948
CHECKED BY	SG/TR	www.mmmgrouplimited.com	
APPROVED BY	RMB		
NO.	REVISIONS	DATE	BY
C	ISSUED FOR TENDER	02.05.17	SG
B	ISSUED FOR UNDERGROUND STRUCTURES REVIEW	17.04.17	SG
A	ISSUED FOR CLIENT REVIEW	23.03.17	SG
		DATE	BY
		02 MAR 2017	



THE CITY OF WINNIPEG
PUBLIC WORKS DEPARTMENT
ENGINEERING DIVISION

2017 LOCAL STREET RENEWAL PROGRAM
ROSLYN ROAD
OSBORNE STREET TO EAST END
PAVEMENT REHABILITATION
STA. 1+04 TO STA. 2+40

CITY DRAWING NUMBER
SHEET 9 OF 19
BID NO. 321-2017

CONSULTANT ACAD DWG. NO. 17M-00168-00-C-09

- NOTES:
- ALL WORK AND MATERIALS TO BE IN ACCORDANCE WITH THE LATEST REVISION OF THE CITY OF WINNIPEG STANDARD CONSTRUCTION SPECIFICATIONS.
 - CONTRACTOR TO CONFIRM THE LOCATION OF ALL UTILITIES/SERVICES IN THE FIELD PRIOR TO CONSTRUCTION.
 - ALL ROADWAY DIMENSIONS SHOWN ARE TO BACK OF CURB.
 - ADD 200.00 TO ABBREVIATED ELEVATIONS TO OBTAIN GEODETIC ELEVATION.
 - PAVEMENT REPAIRS SHOWN ARE ONLY A REPRESENTATIVE APPROXIMATION OF THE TENDERED QUANTITIES.
 - RENEW CURB AND SIDEWALK AS IDENTIFIED BY CONTRACT ADMINISTRATOR.
 - ALL PRIVATE WALKWAYS TO BE ADJUSTED TO NEW SIDEWALK OR TOP OF CURB ELEVATION, AS REQUIRED.
 - MODIFIED BARRIER CURB TO BE CONSTRUCTED AT ALL INTERSECTION RADII AND BACK LANE RADII.
 - CONTRACTORS TO TAKE PRECAUTIONARY STEPS TO PROTECT EXISTING TREES WITHIN THE LIMITS OF CONSTRUCTION FROM DAMAGE FROM CONSTRUCTION ACTIVITIES AS OUTLINED IN THE SPECIFICATIONS.
 - LAMP STANDARDS, HYDRO POLES, AND ANCHORS THAT REQUIRE TEMPORARY SUPPORT, REMOVAL OR REPLACEMENT, TO BE DONE SO AT THE EXPENSE OF THE CONTRACTOR AS NECESSARY.
 - ALL BOULEVARDS TO BE SODDED UNLESS OTHERWISE NOTED.
 - TRAFFIC SERVICES TO PAINT BICYCLE SHARROWS.

FOR TENDER PURPOSES ONLY

METRIC
WHOLE NUMBERS INDICATE MILLIMETRES
DECIMALIZED NUMBERS INDICATE METRES

APEGM
Certificate of Authorization
MMM Group Limited
No. 4531

M:\05_2017 - 244m - Local Streets 17-R-04\MMW Drawings\Construction\Rehabilitation\17M-00168-00-C09 - C11 Roslyn Road 2017.05.02.dwg - tab.C09
 P:\2017\17M-00168-00 - Local Streets 17-R-04\MMW Drawings\Construction\Rehabilitation\17M-00168-00-C09 - C11 Roslyn Road 2017.05.02.dwg - tab.C09