

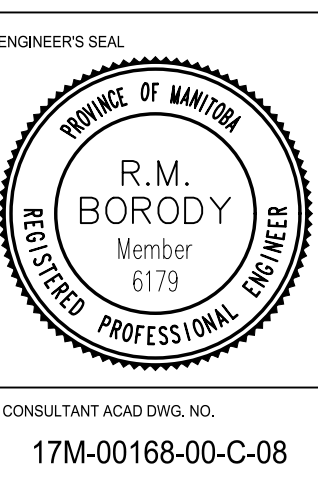
FOR TENDER PURPOSES ONLY

NOTE: These design documents are prepared solely for the use by the party with whom the design professional has entered into a contract and there are no representations of any kind made by the design professional to any party with whom the design professional has not entered into a contract.

EXISTING	PROPOSED	EXISTING	PROPOSED	LEGEND-PLAN	PROPOSED	LEGEND-PROFILE	PROPOSED
---	---	---	---	WATER MAIN	---	---	IRON BAR
---	---	---	---	LAND DRAINAGE SEWER	---	---	HYDRO POLE & LIGHT STANDARD
---	---	---	---	WASTE WATER SEWER	---	---	LIGHT STANDARD OR TRAFFIC SIGNAL
---	---	---	---	HYDRO	---	---	HYDRO POLE
---	---	---	---	M.T.S.	---	---	CURB RAMP
---	---	---	---	GAS	---	---	DETECTABLE WARNING SURFACE TILE
---	---	---	---	SIGNALS	---	---	EDGE OF SIDEWALK
---	---	---	---	MANHOLE	---	---	FENCE
---	---	---	---	CATCH BASIN	---	---	PROPERTY LINE
---	---	---	---	CURB INLET	---	---	EDGE OF ASPHALT
---	---	---	---	UTILITIES ADJUSTED	---	---	EDGE OF CONCRETE
---	---	---	---	PLUG	---	---	MODIFIED BARRIER CURB
---	---	---	---	HYDRANT	---	---	BARRIER CURB
---	---	---	---	VALVE	---	---	BARRIER CURB AND GUTTER
---	---	---	---	CURB STOP	---	---	CONC SIDEWALK
---	---	---	---	GROUND GRADE	---	---	CONCRETE SLAB
---	---	---	---	PAVEMENT GRADE	---	---	ASPHALT
---	---	---	---	ANCHOR	---	---	MILLED SURFACE
---	---	---	---	CIVIC ADDRESS	---	---	ASPHALT JOINT REPAIR
---	---	---	---	LEGEND-PLAN	---	---	LEGEND-PROFILE

LOCATIONS APPROVED UNDERGROUND STRUCTURES	
SIGNED BY:	DATE:
SUPV UG STRUCTURES	
LOCATION OF UNDERGROUND STRUCTURES AS SHOWN ARE BASED ON THE BEST INFORMATION AVAILABLE BUT NO GUARANTEE IS GIVEN THAT ALL EXISTING UTILITIES ARE SHOWN OR THAT THE GIVEN LOCATIONS ARE EXACT CONFIRMATION OF EXISTENCE AND EXACT LOCATION OF ALL SERVICES MUST BE OBTAINED FROM THE INDIVIDUAL UTILITIES BEFORE PROCEEDING	

G.B.M. BENCHMARK LOCATION	
ELEV. 234.279	LOCATED ON TOP OF TOP NUT ON HYDRANT AT NORTHEAST CORNER OF KINGSWAY AND MONROSE STREET
DESIGNED BY: SG	CHECKED BY: SG/TR
DRAWN BY: HK/LT	APPROVED BY: RMB
HOR. SCALE: 1:250	RELEASED FOR CONSTRUCTION:
VERTICAL: 1:10	DATE: 16 FEB 2017



**THE CITY OF WINNIPEG**  
PUBLIC WORKS DEPARTMENT  
ENGINEERING DIVISION

2017 LOCAL STREET RENEWAL PROGRAM  
KINGSWAY  
OAK STREET TO CAMBRIDGE STREET  
PAVEMENT REHABILITATION  
STA. 4+40 TO STA. 5+93.4

CITY DRAWING NUMBER: SHEET 8 OF 19  
BID NO. 321-2017

- NOTES:
- ALL WORK AND MATERIALS TO BE IN ACCORDANCE WITH THE LATEST REVISION OF THE CITY OF WINNIPEG STANDARD CONSTRUCTION SPECIFICATIONS.
  - CONTRACTOR TO CONFIRM THE LOCATION OF ALL UTILITIES/SERVICES IN THE FIELD PRIOR TO CONSTRUCTION.
  - ALL ROADWAY DIMENSIONS SHOWN ARE TO BACK OF CURB.
  - ADD 200.00 TO ABBREVIATED ELEVATIONS TO OBTAIN GEODETIC ELEVATION.
  - PAVEMENT REPAIRS SHOWN ARE ONLY A REPRESENTATIVE APPROXIMATION OF THE TENDERED QUANTITIES.
  - RENEW CURB AND SIDEWALK AS IDENTIFIED BY CONTRACT ADMINISTRATOR.
  - ALL PRIVATE WALKWAYS TO BE ADJUSTED TO NEW SIDEWALK OR TOP OF CURB ELEVATION, AS REQUIRED.
  - MODIFIED BARRIER CURB TO BE CONSTRUCTED AT ALL INTERSECTION RADI AND BACK LANE RADI.
  - CONTRACTORS TO TAKE PRECAUTIONARY STEPS TO PROTECT EXISTING TREES WITHIN THE LIMITS OF CONSTRUCTION FROM DAMAGE FROM CONSTRUCTION ACTIVITIES AS OUTLINED IN THE SPECIFICATIONS.
  - LAMP STANDARDS, HYDRO POLES, AND ANCHORS THAT REQUIRE TEMPORARY SUPPORT, REMOVAL OR REPLACEMENT, TO BE DONE SO AT THE EXPENSE OF THE CONTRACTOR AS NECESSARY.
  - ALL BOULEVARDS TO BE SODDED UNLESS OTHERWISE NOTED.

**METRIC**  
WHOLE NUMBERS INDICATE MILLIMETRES  
DECIMALIZED NUMBERS INDICATE METRES

Certificate of Authorization  
MMM Group Limited  
No. 4531

M:\03\_2017\_12\_01\17-00188-00 - Local Streets 17-R-04\MMW Drawings\Construction Drawings\Rehabilitation\17-00188-00 C06 - C08 Kingsway\2017.05.03.dwg - tab: C08  
 P:\2017\17-00188-00