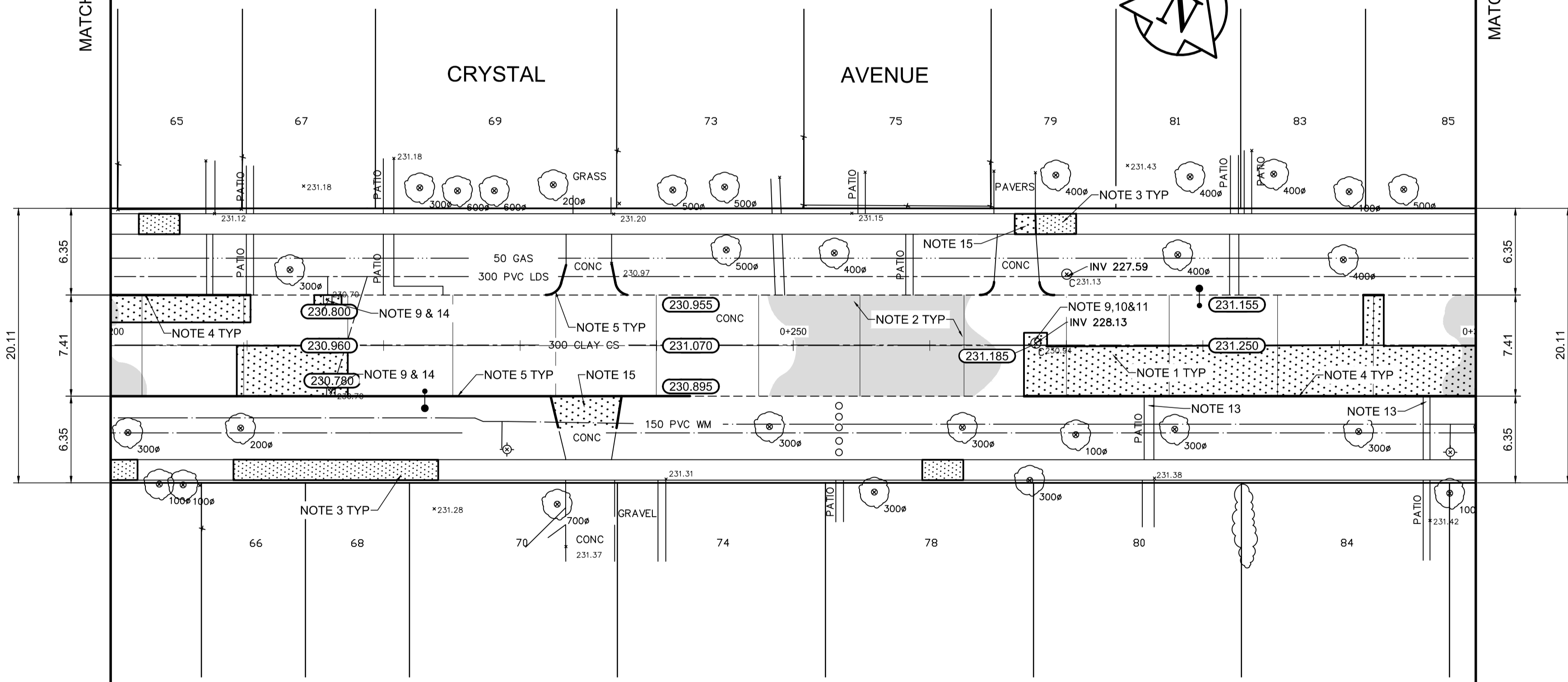


MATCHLINE 0+200

MATCHLINE 0+300

CRYSTAL AVENUE



REFERENCE NOTES

- A. PAVEMENT DIMENSIONS ARE TO BACK OF CURB
- B. BASELINE IS CENTRE LINE RIGHT-OF-WAY
- C. PROPERTY LINES OBTAINED FROM CITY OF WINNIPEG L.B.I.S., AND NO SCALE FACTOR WAS APPLIED
- D. REFER TO AECOM FIELD BOOK NO. 4978

CONSTRUCTION NOTES

1. REMOVE EXISTING CONCRETE PAVEMENT AND CONSTRUCT NEW 150mm REINFORCED CONCRETE PAVEMENT C/W NEW ASPHALT PAVEMENT
2. PLACE NEW ASPHALTIC PAVEMENT TYPE 1A (85mm AVG. THICKNESS)
3. RENEW EXISTING 100mm CONCRETE SIDEWALK
4. CONSTRUCT NEW BARRIER CURB (100mm REVEAL HT. SEPERATE)
5. RENEW EXISTING CONCRETE BARRIER CURB (100mm REVEAL HT. DOWELLED)
6. CONSTRUCT NEW CURB RAMP (10mm REVEAL HT. INTEGRAL)
7. CONSTRUCT NEW MODIFIED BARRIER CURB (150mm REVEAL HT. INTEGRAL)
8. CONSTRUCT NEW MODIFIED BARRIER CURB (150mm REVEAL HT. DOWELLED)
9. ADJUST EXISTING MANHOLE/CATCH BASIN TO GRADE
10. REMOVE EXISTING FRAME AND COVER AND INSTALL NEW FRAME AND SOLID COVER (AP-006 AND AP-007)
11. INSTALL NEW CAST IRON RISER RING
12. ADJUST EXISTING WATER VALVE TO GRADE
13. ADJUST EXISTING PATIO BLOCK
14. REMOVE EXISTING FRAME AND COVER AND INSTALL NEW BARRIER CURB AND GUTTER INLET COVER (AP-011 AND AP-012)
15. REMOVE EXISTING CONCRETE PAVEMENT AND CONSTRUCT NEW 150mm REINFORCED CONCRETE PAVEMENT

AECOM
 Certificate of Authorization
 AECOM Canada Ltd.
 No. 4671 Date: _____

METRIC
 WHOLE NUMBERS INDICATE MILLIMETRES
 DECIMALIZED NUMBERS INDICATE METRES

150 mm W.M.	WATERMAIN	150 mm W.M.	HYDRO	— X —	PROFILE
Hydrant	HYDRANT	Manhole	M.T.S.	North Gutter	NORTH GUTTER
Valve	VALVE	Catch Basin	CONCRETE	South Gutter	SOUTH GUTTER
300mm L.D.S.	LAND DRAINAGE SEWER	Catch Pit	ASPHALT	N/W PROPERTY LINE	N/W PROPERTY LINE
250mm W.W.S.	WASTEWATER SEWER	Junctions	PROPERTY LINE	S/E PROPERTY LINE	S/E PROPERTY LINE
		Culvert	SURVEY BAR		
			ELEVATION		
			TREE		
			SIDEWALK RAMP		
			CONCRETE SIDEWALK		
			FENCE		
EXISTING	LEGEND - PLAN	PROPOSED	EXISTING	LEGEND - PLAN	PROPOSED
			EXISTING	LEGEND - PROFILE	PROPOSED

LOCATION APPROVED UNDERGROUND STRUCTURES
 SUPV. U/G STRUCTURES COMMITTEE DATE _____

NOTE:
 LOCATION OF UNDERGROUND STRUCTURES AS SHOWN ARE BASED ON THE BEST INFORMATION AVAILABLE. BUT NO GUARANTEE IS GIVEN THAT ALL EXISTING UTILITIES ARE SHOWN OR THAT THE GIVEN LOCATIONS ARE EXACT. CONFIRMATION OF EXISTENCE AND EXACT LOCATION OF ALL SERVICES MUST BE OBTAINED FROM THE INDIVIDUAL UTILITIES BEFORE PROCEEDING WITH CONSTRUCTION.

B.M. 19-054	N.E. Cor. St. Anne's Rd. & Bank Ave., Tblt. in W. ELEV. 231.680	Conc. foundation of St. Vital Baptist Church
NO.	ISSUED FOR TENDER	05/10/17 BC
A	ISSUED FOR REVIEW	05/01/17 BC
	REVISIONS	DATE BY

AECOM

DESIGNED BY	JC	CHECKED BY	TDW/KWR
DRAWN BY	JC/PB	APPROVED BY	
HOR. SCALE:	1:250	RELEASED FOR CONSTRUCTION BY:	
VERTICAL:	1:10	DATE	

ENGINEER'S SEAL
 PROVINCE OF MANITOBA
K.W. RAE
 REGISTERED PROFESSIONAL ENGINEER

THE CITY OF WINNIPEG
 PUBLIC WORKS DEPARTMENT
 ENGINEERING DIVISION

2017 LOCAL STREET RENEWAL PROGRAM

CRYSTAL AVENUE - ST. THOMAS ROAD TO ST. ANNE'S ROAD
 PAVEMENT REHABILITATION
 STATION 0+200 TO STATION 0+300

CITY DRAWING NUMBER
 SHEET 26 OF 27

CONSULTANT DRAWING NO.
 CT-26