

- REFERENCE NOTES**
- PAVEMENT DIMENSIONS ARE TO BACK OF CURB
 - BASELINE IS CENTRE LINE RIGHT-OF-WAY
 - PROPERTY LINES OBTAINED FROM CITY OF WINNIPEG L.B.I.S., AND NO SCALE FACTOR WAS APPLIED
 - REFER TO AECOM FIELDBOOK NO. 4975

- CONSTRUCTION NOTES**
- PLANE EXISTING ASPHALT AND CONSTRUCT NEW ASPHALTIC PAVEMENT TYPE 1A (AVG THICKNESS 85mm)
 - REMOVE EXISTING CONCRETE PAVEMENT AND CONSTRUCT NEW 150mm REINFORCED CONCRETE PAVEMENT c/w ASPHALIC OVERLAY
 - RENEW EXISTING 100mm CONCRETE SIDEWALK
 - CONSTRUCT NEW CURB RAMP (10mm REVEAL HT. MONOLITHIC)
 - CONSTRUCT NEW MODIFIED BARRIER CURB (150mm REVEAL HT. DOWELLED)
 - CONSTRUCT NEW MONOLITHIC CONCRETE BULLNOSE
 - RENEW EXISTING CONCRETE BARRIER CURB (150mm REVEAL HT. DOWELLED)
 - CONSTRUCT NEW BARRIER CURB (150mm REVEAL HT. SEPERATE)
 - INSTALL NEW CURB AND GUTTER INLET c/w CATCHBASIN (SD-024) AND CONNECT TO EXISTING 250mm LEAD
 - ADJUST EXISTING MANHOLE/CATCH BASIN TO GRADE
 - REMOVE EXISTING FRAME AND COVER AND INSTALL NEW FRAME AND SOLID COVER (AP-006 AND AP-007)
 - INSTALL NEW CAST IRON RISER RING
 - REMOVE EXISTING CATCHBASIN
 - ADJUST EXISTING WATER VALVE TO GRADE
 - INSTALL NEW DETECTABLE WARNING SURFACE TILES
 - COORDINATE NEW SIDEWALK INSTALLATION, BID OPPORTUNITY 338-2017, CONTACT CORY HUMBERT, PHONE: 204-226-2303

AECOM
 Certificate of Authorization
 AECOM Canada Ltd.
 No. 4671 Date: _____

METRIC
 WHOLE NUMBERS INDICATE MILLIMETRES
 DECIMALIZED NUMBERS INDICATE METRES

150 mm W.M.	WATERMAIN	150 mm W.M.	HYDRO	X	PROFILE
Hydrant	HYDRANT	Hydrant	M.T.S.	West-Median Gutter	WEST-MEDIAN GUTTER
Valve	VALVE	Valve	CONCRETE	West-Gutter	WEST-GUTTER
300mm L.D.S.	LAND DRAINAGE SEWER	300mm L.D.S.	ASPHALT	East-Median Gutter	EAST-MEDIAN GUTTER
250mm W.W.S.	WASTEWATER SEWER	250mm W.W.S.	PROPERTY LINE	East-Gutter	EAST-GUTTER
Manhole	MANHOLE	Manhole	SURVEY BAR	N/W PROPERTY LINE	N/W PROPERTY LINE
Catch Basin	CATCH BASIN	Catch Basin	ELEVATION (235.750)	S/E PROPERTY LINE	S/E PROPERTY LINE
Catch Pit	CATCH PIT	Catch Pit	TREE		
JUNCTIONS	JUNCTIONS	JUNCTIONS	SIDEWALK RAMP		
Culvert	CULVERT	Culvert	CONCRETE SIDEWALK		
Gas	GAS	Gas	FENCE		
EXISTING	LEGEND - PLAN	PROPOSED	EXISTING	LEGEND - PROFILE	PROPOSED

LOCATION APPROVED UNDERGROUND STRUCTURES

SUPV. U/G STRUCTURES COMMITTEE DATE

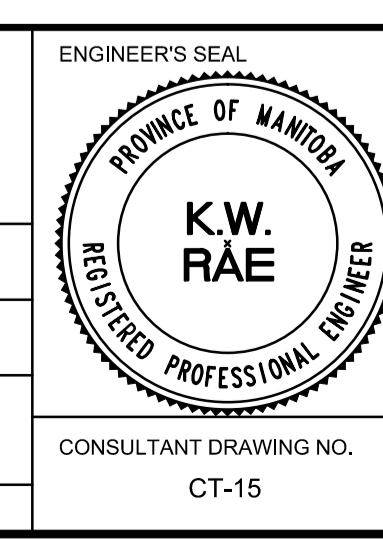
NOTE:
 LOCATION OF UNDERGROUND STRUCTURES AS SHOWN ARE BASED ON THE BEST INFORMATION AVAILABLE. BUT NO GUARANTEE IS GIVEN THAT ALL EXISTING UTILITIES ARE SHOWN OR THAT THE GIVEN LOCATIONS ARE EXACT. CONFIRMATION OF EXISTENCE AND EXACT LOCATION OF ALL SERVICES MUST BE OBTAINED FROM THE INDIVIDUAL UTILITIES BEFORE PROCEEDING WITH CONSTRUCTION.

B.M. 47 - 055 84R780 - N.E. Cor. Lakewood Blvd. & Edgewater Dr. Tab. on top of 0.05 m dia. x 2.4 m iron pipe. 5 m S. of N.L. of Edgewater Dr. and on E.L. of Lakewood Blvd.

ISSUED FOR TENDER	05/10/17	BC
ISSUED FOR REVIEW	05/01/17	BC
NO. REVISIONS	DATE	BY

AECOM

DESIGNED BY	SS	CHECKED BY	TDW/KWR
DRAWN BY	PB/SS	APPROVED BY	
HOR. SCALE:	1:250	RELEASED FOR CONSTRUCTION BY:	
VERTICAL:	1:10	DATE	



THE CITY OF WINNIPEG
 PUBLIC WORKS DEPARTMENT
 ENGINEERING DIVISION

2017 LOCAL STREET RENEWAL PROGRAM

LAKWOOD BLVD - WEATHERSTONE PLACE TO FERMOR PAVEMENT REHABILITATION WEATHERSTONE PLACE TO STATION 0+210

CITY DRAWING NUMBER SHEET 15 OF 27

CONSULTANT DRAWING NO. CT-15