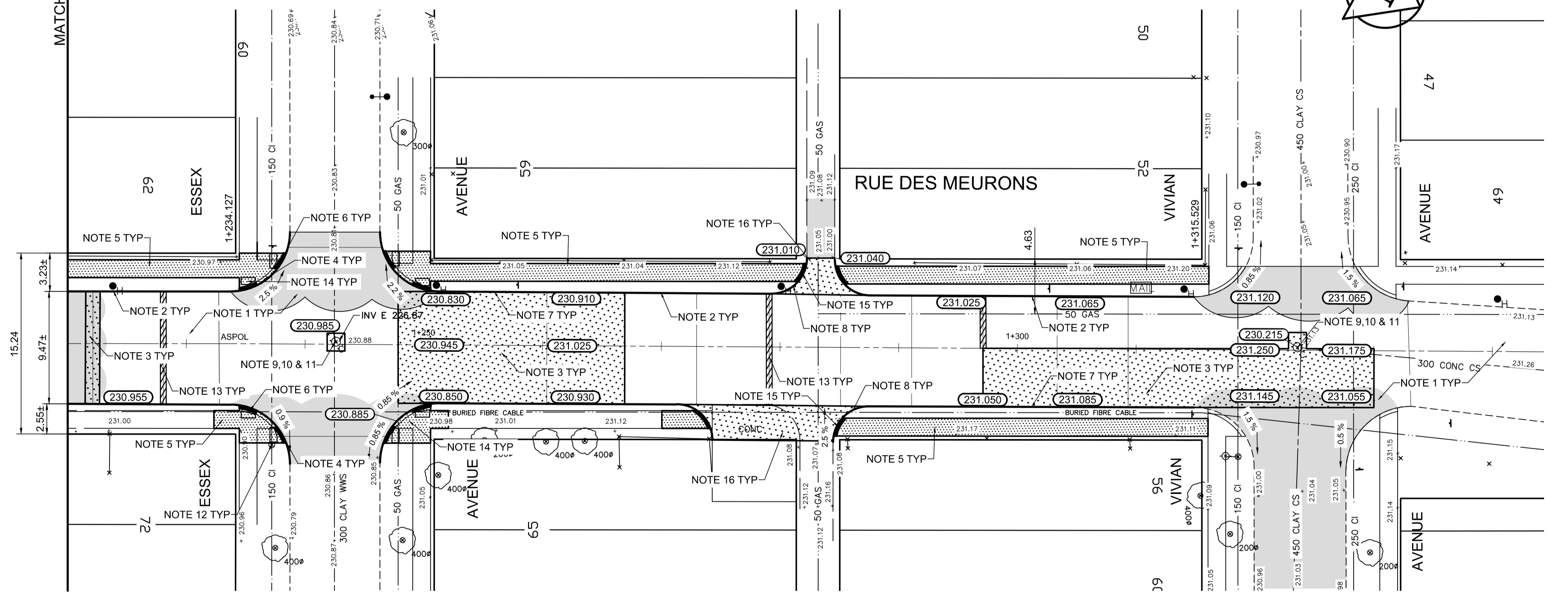


MATCHLINE 1+220



REFERENCE NOTES

- A. PAVEMENT DIMENSIONS ARE TO BACK OF CURB
- B. BASELINE IS CENTRE LINE RIGHT-OF-WAY
- C. PROPERTY LINES OBTAINED FROM CITY OF WINNIPEG L.B.I.S., AND NO SCALE FACTOR WAS APPLIED
- D. REFER TO AECOM FIELD BOOK NO. 4977

CONSTRUCTION NOTES

1. PLACE NEW ASPHALTIC PAVEMENT TYPE 1A (AVG THICKNESS 85mm)
2. RENEW EXISTING BARRIER CURB (100mm REVEAL HT. DOWELLED)
3. REMOVE EXISTING CONCRETE PAVEMENT AND CONSTRUCT NEW 150mm REINFORCED CONCRETE PAVEMENT c/w ASPHALTIC OVERLAY
4. REMOVE EXISTING BARRIER CURB AND CONSTRUCT NEW CONCRETE MODIFIED BARRIER CURB (150mm REVEAL HT. DOWELLED)
5. RENEW EXISTING 100mm CONCRETE SIDEWALK
6. CONSTRUCT CURB RAMP (10mm REVEAL HT. MONOLITHIC)
7. CONSTRUCT NEW CONCRETE BARRIER CURB (100mm REVEAL HT. SEPERATE)
8. CONSTRUCT NEW CONCRETE MODIFIED BARRIER CURB (150mm REVEAL HT. INTEGRAL)
9. ADJUST EXISTING MANHOLE/CATCHBASIN TO GRADE
10. REMOVE EXISTING FRAME AND COVER AND INSTALL NEW FRAME AND SOLID COVER (AP-006 & AP-007)
11. INSTALL NEW CAST IRON RISER RING
12. ADJUST EXISTING WATER VALVE TO GRADE
13. PARTIAL DEPTH PLANING OF EXISTING JOINTS AND ASPHALT PATCHING OF EXISTING JOINTS USING TYPE 1A
14. INSTALL NEW DETECTABLE WARNING SURFACE TILES
15. CONSTRUCT CURB RAMP (10mm REVEAL HT. INTEGRAL)
16. REMOVE EXISTING CONCRETE PAVEMENT AND CONSTRUCT NEW 150mm REINFORCED CONCRETE PAVEMENT



METRIC
WHOLE NUMBERS INDICATE MILLIMETRES
DECIMALIZED NUMBERS INDICATE METRES

150 mm W.M.	WATERMAIN	150 mm W.M.	HYDRO	X	PROFILE
Hydrant	HYDRANT	Hydrant	M.T.S.	West Gutter	WEST GUTTER
Valve	VALVE	Valve	CONCRETE	East Gutter	EAST GUTTER
300mm L.D.S.	LAND DRAINAGE SEWER	300mm L.D.S.	ASPHALT	N/W PROPERTY LINE	N/W PROPERTY LINE
250mm W.W.S.	WASTEWATER SEWER	250mm W.W.S.	PROPERTY LINE	S/E PROPERTY LINE	S/E PROPERTY LINE
Manhole	MANHOLE	Manhole	SURVEY BAR		
Catch Basin	CATCH BASIN	Catch Basin	ELEVATION	(235.750)	
Catch Pit	CATCH PIT	Catch Pit	TREE		
Junctions	JUNCTIONS	Junctions	SIDEWALK RAMP		
Culvert	CULVERT	Culvert	CONCRETE SIDEWALK		
Gas	GAS	Gas	FENCE		
EXISTING	LEGEND - PLAN	PROPOSED	EXISTING	LEGEND - PLAN	PROPOSED
EXISTING	LEGEND - PROFILE	PROPOSED	EXISTING	LEGEND - PROFILE	PROPOSED

LOCATION APPROVED UNDERGROUND STRUCTURES

SUPV. U/G STRUCTURES COMMITTEE DATE

NOTE:
LOCATION OF UNDERGROUND STRUCTURES AS SHOWN ARE BASED ON THE BEST INFORMATION AVAILABLE. BUT NO GUARANTEE IS GIVEN THAT ALL EXISTING UTILITIES ARE SHOWN OR THAT THE GIVEN LOCATIONS ARE EXACT. CONFIRMATION OF EXISTENCE AND EXACT LOCATION OF ALL SERVICES MUST BE OBTAINED FROM THE INDIVIDUAL UTILITIES BEFORE PROCEEDING WITH CONSTRUCTION.

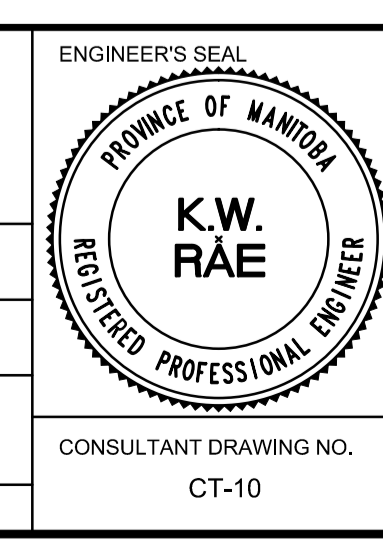
B.M. 52-054 85R410 S.W. Cor. Des Meurons & Vivian Ave. Tall on top of 0.05 m dia. x 2.4 m iron pipe, beneath ELEV.231.032

Valve Box, 1.8 m E. of W.L. of Rue Des Meurons & on S.L. of Vivian

NO.	ISSUED FOR TENDER	05/10/17	BC
A	ISSUED FOR REVIEW	05/01/17	BC
NO.	REVISIONS	DATE	BY

AECOM

DESIGNED BY	JT	CHECKED BY	TDW/BC
DRAWN BY	BC/PB	APPROVED BY	
HOR. SCALE:	1:250	RELEASED FOR CONSTRUCTION BY:	
VERTICAL:	1:10	DATE	



THE CITY OF WINNIPEG
PUBLIC WORKS DEPARTMENT
ENGINEERING DIVISION

2017 LOCAL STREET RENEWAL PROGRAM

RUE DES MEURONS - REGAL AVENUE / VIVIAN AVENUE
PAVEMENT REHABILITATION
STATION 1+220 TO VIVIAN AVENUE

CITY DRAWING NUMBER: SHEET 10 OF 27

CONSULTANT DRAWING NO. CT-10