

- REFERENCE NOTES**
- PAVEMENT DIMENSIONS ARE TO BACK OF CURB
  - BASELINE IS CENTRE LINE RIGHT-OF-WAY
  - PROPERTY LINES OBTAINED FROM CITY OF WINNIPEG L.B.I.S., AND NO SCALE FACTOR WAS APPLIED
  - REFER TO AECOM FIELD BOOK NO. 4977

- CONSTRUCTION NOTES**
- PLACE NEW ASPHALTIC PAVEMENT TYPE 1A (AVG THICKNESS 85mm)
  - RENEW EXISTING BARRIER CURB (100mm REVEAL HT. DOWELED)
  - REMOVE EXISTING CONCRETE PAVEMENT AND CONSTRUCT NEW 150mm REINFORCED CONCRETE PAVEMENT c/w ASPHALTIC OVERLAY
  - REMOVE EXISTING BARRIER CURB AND CONSTRUCT NEW CONCRETE MODIFIED BARRIER CURB (150mm REVEAL HT. DOWELED)
  - RENEW EXISTING 100mm CONCRETE SIDEWALK
  - CONSTRUCT CURB RAMP (10mm REVEAL HT. MONOLITHIC)
  - CONSTRUCT NEW CONCRETE BARRIER CURB (100mm REVEAL HT. SEPERATE)
  - ABANDON EXISTING DRAINAGE INLET AND LEAD
  - INSTALL NEW CATCHPIT (SD-023) AND CONNECT TO EXISTING CATCHBASIN
  - CONSTRUCT NEW CONCRETE MODIFIED BARRIER CURB (150mm REVEAL HT. INTEGRAL)
  - ADJUST EXISTING MANHOLE/CATCHBASIN TO GRADE
  - REMOVE EXISTING FRAME AND COVER AND INSTALL NEW FRAME AND SOLID COVER (AP-006 & AP-007)
  - INSTALL NEW CAST IRON RISER RING
  - ADJUST EXISTING WATER VALVE TO GRADE
  - INSTALL NEW DETECTABLE WARNING SURFACE TILES
  - CONSTRUCT CURB RAMP (10mm REVEAL HT. INTEGRAL)
  - REMOVE EXISTING OPEN GRATE FRAME AND COVER AND INSTALL NEW OPEN GRATE FRAME AND COVER (AP-006 & AP-008)



**METRIC**  
WHOLE NUMBERS INDICATE MILLIMETRES  
DECIMALIZED NUMBERS INDICATE METRES

	WATERMAIN		HYDRANT		HYDRO M.T.S.		PROFILE
	LAND DRAINAGE SEWER		WASTEWATER SEWER		CONCRETE		WEST GUTTER
	MANHOLE		CATCH BASIN		ASPHALT		EAST GUTTER
	CATCH PIT		JUNCTIONS		PROPERTY LINE		N/W PROPERTY LINE
	CULVERT		SURVEY BAR		S/E PROPERTY LINE		EXISTING
	GAS		ELEVATION		TREE		PROPOSED
	EXISTING		PROPOSED		SIDEWALK RAMP		LEGEND - PROFILE
	EXISTING		PROPOSED		CONCRETE SIDEWALK		PROPOSED
	EXISTING		PROPOSED		FENCE		PROPOSED

**LOCATION APPROVED UNDERGROUND STRUCTURES**

SUPV. U/G STRUCTURES COMMITTEE DATE

**NOTE:**  
LOCATION OF UNDERGROUND STRUCTURES AS SHOWN ARE BASED ON THE BEST INFORMATION AVAILABLE. BUT NO GUARANTEE IS GIVEN THAT ALL EXISTING UTILITIES ARE SHOWN OR THAT THE GIVEN LOCATIONS ARE EXACT. CONFIRMATION OF EXISTENCE AND EXACT LOCATION OF ALL SERVICES MUST BE OBTAINED FROM THE INDIVIDUAL UTILITIES BEFORE PROCEEDING WITH CONSTRUCTION.

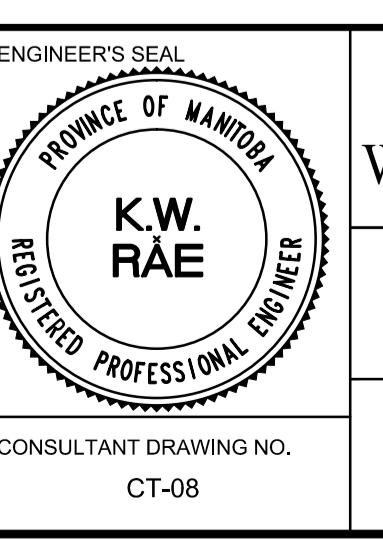
B.M. 52-054 85R410 S.W. Cor. Des Meurons & Vivian Ave. Tall on top of 0.05 m dia. x 2.4 m iron pipe, beneath ELEV 231.032

Valve Box, 1.8 m E. of W.L. of Rue Des Meurons & on S.L. of Vivian

NO.	REVISIONS	DATE	BY	DATE
0	ISSUED FOR TENDER	05/10/17	BC	
A	ISSUED FOR REVIEW	05/01/17	BC	

**AECOM**

DESIGNED BY	JT	CHECKED BY	TDW/BC
DRAWN BY	BC/PB	APPROVED BY	
HOR. SCALE:	1:250	RELEASED FOR CONSTRUCTION BY:	
VERTICAL:	1:10	DATE	



**THE CITY OF WINNIPEG**  
PUBLIC WORKS DEPARTMENT  
ENGINEERING DIVISION

2017 LOCAL STREET RENEWAL PROGRAM

RUE DES MEURONS - REGAL AVENUE / VIVIAN AVENUE  
PAVEMENT REHABILITATION  
STATION 0+970 TO STATION 1+100

CITY DRAWING NUMBER: SHEET 08 OF 27

CONSULTANT DRAWING NO. CT-08