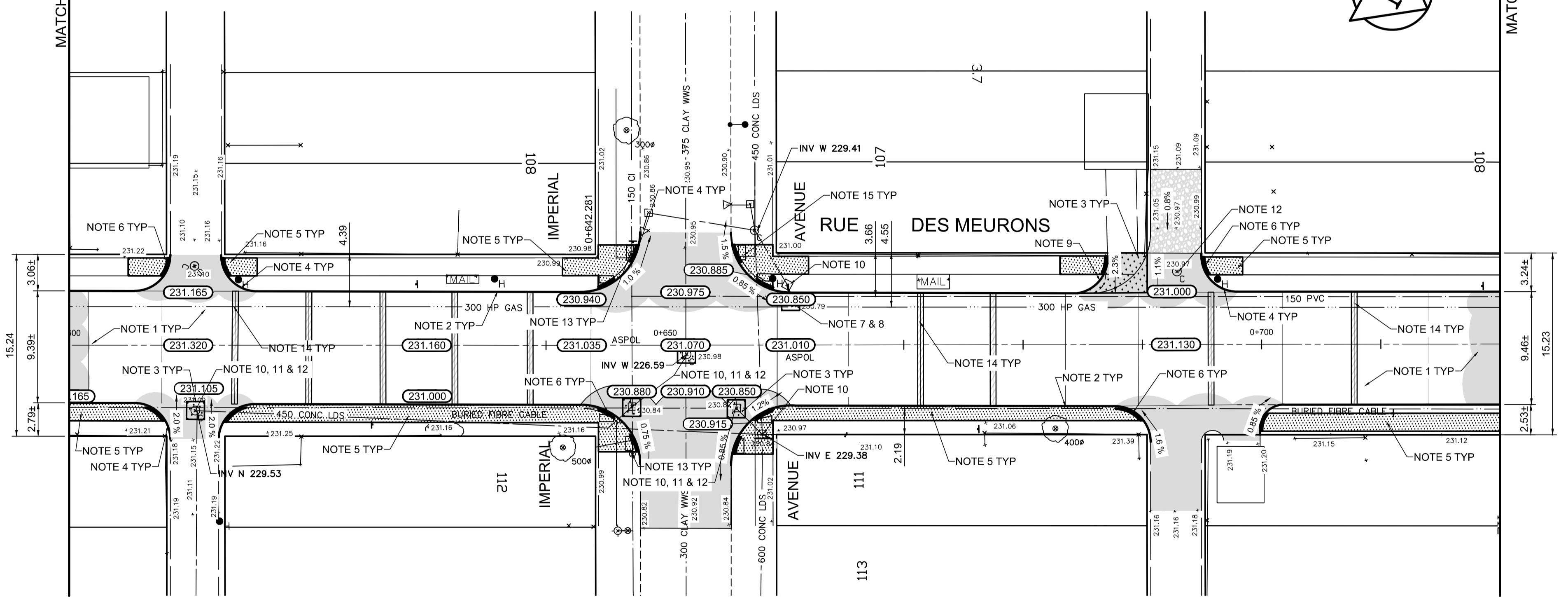


REFERENCE NOTES

- A. PAVEMENT DIMENSIONS ARE TO BACK OF CURB
- B. BASELINE IS CENTRE LINE RIGHT-OF-WAY
- C. PROPERTY LINES OBTAINED FROM CITY OF WINNIPEG L.B.I.S., AND NO SCALE FACTOR WAS APPLIED
- D. REFER TO AECOM FIELD BOOK NO. 4977

CONSTRUCTION NOTES

1. PLACE NEW ASPHALTIC PAVEMENT TYPE 1A (AVG THICKNESS 85mm)
2. RENEW EXISTING BARRIER CURB (100mm REVEAL HT. DOWELED)
3. REMOVE EXISTING CONCRETE PAVEMENT AND CONSTRUCT NEW 150mm REINFORCED CONCRETE PAVEMENT c/w ASPHALTIC OVERLAY
4. REMOVE EXISTING BARRIER CURB AND CONSTRUCT NEW CONCRETE MODIFIED BARRIER CURB (150mm REVEAL HT. DOWELED)
5. RENEW EXISTING 100mm CONCRETE SIDEWALK
6. CONSTRUCT CURB RAMP (10mm REVEAL HT. MONOLITHIC)
7. ABANDON EXISTING DRAINAGE INLET AND LEAD
8. INSTALL NEW CATCHPIT (SD-023) AND CONNECT TO EXISTING CATCHBASIN
9. CONSTRUCT NEW CONCRETE MODIFIED BARRIER CURB (150mm REVEAL HT. INTEGRAL)
10. ADJUST EXISTING MANHOLE/CATCHBASIN TO GRADE
11. REMOVE EXISTING FRAME AND COVER AND INSTALL NEW FRAME AND SOLID COVER (AP-006 & AP-007)
12. INSTALL NEW CAST IRON RISER RING
13. ADJUST EXISTING WATER VALVE TO GRADE
14. PARTIAL DEPTH PLANING OF EXISTING JOINTS AND ASPHALT PATCHING OF EXISTING JOINTS USING TYPE 1A
15. INSTALL NEW DETECTABLE WARNING SURFACE TILES



METRIC
WHOLE NUMBERS INDICATE MILLIMETRES
DECIMALIZED NUMBERS INDICATE METRES

EXISTING	LEGEND - PLAN	PROPOSED	EXISTING	LEGEND - PLAN	PROPOSED	EXISTING	LEGEND - PROFILE	PROPOSED
	WATERMAIN			HYDRO M.T.S.			WEST GUTTER	
	HYDRANT			CONCRETE			EAST GUTTER	
	VALVE			ASPHALT			NW PROPERTY LINE	
	LAND DRAINAGE SEWER			PROPERTY LINE			S/E PROPERTY LINE	
	WASTEWATER SEWER			SURVEY BAR			ELEVATION	
	MANHOLE			TREE			SIDEWALK RAMP	
	CATCH BASIN			CONCRETE SIDEWALK			FENCE	
	CATCH PIT							
	JUNCTIONS							
	CULVERT							
	GAS							

LOCATION APPROVED UNDERGROUND STRUCTURES

SUPV. U/G STRUCTURES COMMITTEE DATE

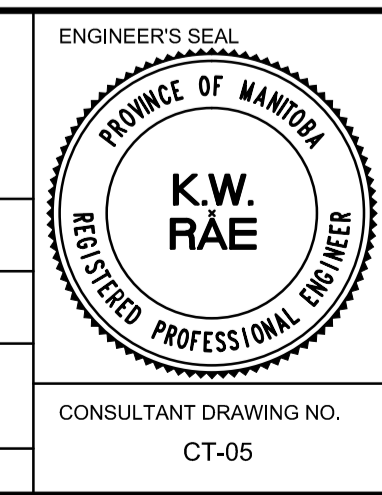
NOTE:
LOCATION OF UNDERGROUND STRUCTURES AS SHOWN ARE BASED ON THE BEST INFORMATION AVAILABLE, BUT NO GUARANTEE IS GIVEN THAT ALL EXISTING UTILITIES ARE SHOWN OR THAT THE GIVEN LOCATIONS ARE EXACT. CONFIRMATION OF EXISTENCE AND EXACT LOCATION OF ALL SERVICES MUST BE OBTAINED FROM THE INDIVIDUAL UTILITIES BEFORE PROCEEDING WITH CONSTRUCTION.

B.M. 52-054 85R410 S.W. Cor. Des Meurons & Vivian Ave.,
That, on top of 0.05 m dia. x 2.4 m iron pipe, beneath
ELEV. 231.032 Valve Box, 1.8 m E. of W.L. of Rue Des Meurons &
on S.L. of Vivian

NO.	REVISIONS	DATE	BY
1	MISCELLANEOUS REVISIONS	05/15/17	BC
0	ISSUED FOR TENDER	05/10/17	BC
A	ISSUED FOR REVIEW	05/01/17	BC

AECOM

DESIGNED BY: JT
CHECKED BY: TDW/BC
DRAWN BY: BC/PB
APPROVED BY:
HOR. SCALE: 1:250
VERTICAL: 1:10
RELEASED FOR CONSTRUCTION BY:
DATE: _____



THE CITY OF WINNIPEG
PUBLIC WORKS DEPARTMENT
ENGINEERING DIVISION

2017 LOCAL STREET RENEWAL PROGRAM

RUE DES MEURONS - REGAL AVENUE / VIVIAN AVENUE
PAVEMENT REHABILITATION
STATION 0+600 TO STATION 0+720

CITY DRAWING NUMBER
SHEET 05 OF 27

CONSULTANT DRAWING NO. CT-05