

REFERENCE NOTES

- A. PAVEMENT DIMENSIONS ARE TO BACK OF CURB
- B. BASELINE IS CENTRE LINE RIGHT-OF-WAY
- C. PROPERTY LINES OBTAINED FROM CITY OF WINNIPEG L.B.I.S., AND NO SCALE FACTOR WAS APPLIED

CONSTRUCTION NOTES

1. PLANE EXISTING ASPHALT AND CONSTRUCT NEW ASPHALTIC OVERLAY TYPE 1A (AVG THICKNESS 85mm)
2. REMOVE EXISTING CONCRETE PAVEMENT AND CONSTRUCT NEW 200mm REINFORCED CONCRETE PAVEMENT
3. RENEW EXISTING 100mm CONCRETE SIDEWALK
4. CONSTRUCT NEW BARRIER CURB (150mm REVEAL HT. SEPERATE)
5. CONSTRUCT NEW CURB RAMP (10mm REVEAL HT. INTEGRAL)
6. CONSTRUCT NEW CURB RAMP (10mm REVEAL HT. MONOLITHIC)
7. CONSTRUCT NEW MODIFIED BARRIER CURB (150mm REVEAL HT. INTEGRAL)
8. CONSTRUCT NEW MODIFIED BARRIER CURB (150mm REVEAL HT. DOWELLED)
9. CONSTRUCT NEW MONOLITHIC CONCRETE BULLNOSE
10. RENEW EXISTING CONCRETE BARRIER CURB (150mm REVEAL HT. DOWELLED)
11. INSTALL NEW CURB AND GUTTER INLET c/w 1200mm CATCHBASIN (SD-024) AND CONNECT TO EXISTING 600mm CONCRETE LDS
12. INSTALL NEW CURB AND GUTTER INLET c/w 1200mm CATCHBASIN (SD-024) AND CONNECT TO EXISTING 300mm CONCRETE LDS
13. INSTALL NEW CURB AND GUTTER INLET c/w CATCHBASIN (SD-024) AND CONNECT TO EXISTING 250mm LEAD
14. ADJUST EXISTING MANHOLE/CATCH BASIN TO GRADE
15. REMOVE EXISTING FRAME AND COVER AND INSTALL NEW FRAME AND SOLID COVER (AP-005 AND AP-004)
16. INSTALL NEW CAST IRON RISER RING
17. REMOVE EXISTING CATCHBASIN AND ABANDON LEAD
18. REMOVE EXISTING CATCHPIT AND ABANDON LEAD
19. ADJUST EXISTING WATER VALVE TO GRADE
20. INSTALL NEW DETECTABLE WARNING SURFACE TILES
21. REMOVE EXISTING PATIO BLOCKS
22. INSTALL NEW CURB AND GUTTER INLET c/w 1800mm CATCHBASIN (SD-024) AND CONNECT TO EXISTING 250mm LEAD



METRIC
WHOLE NUMBERS INDICATE MILLIMETRES
DECIMALIZED NUMBERS INDICATE METRES

150 mm W.M.	WATERMAIN	150 mm W.M.	HYDRO	X	PROFILE	LOCATION APPROVED
300mm L.D.S.	LAND DRAINAGE SEWER	300mm L.D.S.	CONCRETE	---	WEST-MEDIAN GUTTER	UNDERGROUND STRUCTURES
250mm W.W.S.	WASTEWATER SEWER	250mm W.W.S.	ASPHALT	---	WEST-GUTTER	
300mm L.D.S.	MANHOLE	300mm L.D.S.	PROPERTY LINE	---	EAST-MEDIAN GUTTER	
300mm L.D.S.	CATCH BASIN	300mm L.D.S.	SURVEY BAR	---	EAST-GUTTER	
300mm L.D.S.	CATCH PIT	300mm L.D.S.	ELEVATION (235.750)	---	N/W PROPERTY LINE	
300mm L.D.S.	JUNCTIONS	300mm L.D.S.	TREE	---	S/E PROPERTY LINE	
300mm L.D.S.	CULVERT	300mm L.D.S.	SIDEWALK RAMP	---		
300mm L.D.S.	GAS	300mm L.D.S.	CONCRETE SIDEWALK	---		
EXISTING	LEGEND - PLAN	PROPOSED	EXISTING	LEGEND - PLAN	PROPOSED	EXISTING
---	LEGEND - PROFILE	---	EXISTING	LEGEND - PROFILE	---	PROPOSED

LOCATION APPROVED UNDERGROUND STRUCTURES

SUPV. U/G STRUCTURES COMMITTEE DATE

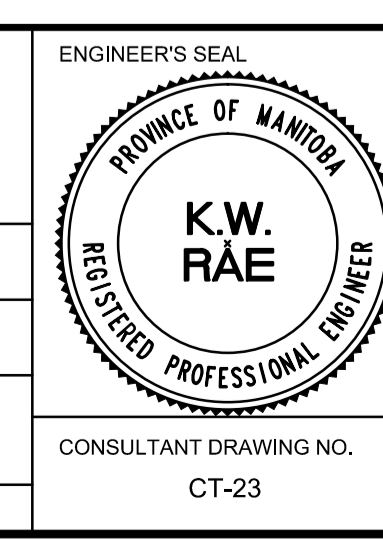
NOTE:
LOCATION OF UNDERGROUND STRUCTURES AS SHOWN ARE BASED ON THE BEST INFORMATION AVAILABLE. BUT NO GUARANTEE IS GIVEN THAT ALL EXISTING UTILITIES ARE SHOWN OR THAT THE GIVEN LOCATIONS ARE EXACT. CONFIRMATION OF EXISTENCE AND EXACT LOCATION OF ALL SERVICES MUST BE OBTAINED FROM THE INDIVIDUAL UTILITIES BEFORE PROCEEDING WITH CONSTRUCTION.

B.M. 37 - 041 83R494 - N.W. Cor. McBey Ave. & Kirkfield St. Tilt: on top of 0.05 m dia. x 2.4 iron pipe, 5.4 m N. ELEV. 235.997

of C.L. Conc. Pavt. of McBey Ave. & 9.2 m. W of C.L. Conc. Pavt. of Kirkfield St.

DESIGNED BY	SS/JT	CHECKED BY	BC/KWR
DRAWN BY	JC/JT/PB	APPROVED BY	
HOR. SCALE:	1:250	RELEASED FOR CONSTRUCTION BY:	
VERTICAL:	1:10	DATE	

0	ISSUED FOR TENDER	05/04/2017	BC
A	ISSUED FOR REVIEW	04/21/2017	BC
NO.	REVISIONS	DATE	BY



THE CITY OF WINNIPEG
PUBLIC WORKS DEPARTMENT
ENGINEERING DIVISION

2017 LOCAL STREET RENEWAL PROGRAM

WESTWOOD AVENUE - SANSOME AVENUE TO PORTAGE AVENUE
PAVEMENT REHABILITATION
STATION 0+460 TO STATION 0+585

CITY DRAWING NUMBER
SHEET 23 OF 25

CONSULTANT DRAWING NO. CT-23