

REFERENCE NOTES

- A. PAVEMENT DIMENSIONS ARE TO BACK OF CURB
- B. BASELINE IS CENTRE LINE RIGHT-OF-WAY
- C. PROPERTY LINES OBTAINED FROM CITY OF WINNIPEG L.B.I.S., AND NO SCALE FACTOR WAS APPLIED
- D. REFER TO AECOM FIELD BOOK NO. 4986

CONSTRUCTION NOTES

1. PLACE NEW ASPHALTIC PAVEMENT TYPE 1A (AVG THICKNESS 85mm)
2. PARTIAL DEPTH PLANING OF EXISTING JOINTS AND ASPHALT PATCHING OF EXISTING JOINTS USING TYPE 1A
3. PLANE EXISTING LIP CURB AND CONSTRUCT NEW LIP CURB (40mm REVEAL HT)
4. PLANE EXISTING LIP CURB AND CONSTRUCT NEW BARRIER CURB (100mm REVEAL HT, DOWELLED)
5. PLANE EXISTING LIP CURB AND OVERLAY WITH ASPHALT
6. CONSTRUCT NEW BARRIER CURB (100mm REVEAL HT, SEPARATE)
7. REMOVE EXISTING CONCRETE/ASPHALT PAVEMENT AND CONSTRUCT NEW 150mm REINFORCED CONCRETE PAVEMENT c/w 50mm ASPHALTIC OVERLAY
8. RENEW EXISTING 100mm CONCRETE SIDEWALK
9. RENEW EXISTING RAMP CURB (10mm REVEAL HT, MONOLITHIC)
10. RENEW EXISTING BARRIER CURB (100mm REVEAL HT, DOWELLED)
11. REGRADE EXISTING PAVING STONES
12. REMOVE EXISTING CATCHPIT
13. REMOVE EXISTING CATCHBASIN
14. ADJUST EXISTING WATER VALVE TO GRADE
15. ADJUST EXISTING MANHOLE/CATH BASIN TO GRADE
16. INSTALL NEW CAST IRON RISER RING
17. INSTALL NEW CATCHBASIN (SD-024) c/w CURB AND GUTTER INLET (AP-008 & AP-009) AND CONNECT TO EXISTING MANHOLE
18. INSTALL NEW CATCHBASIN (SD-024) c/w CURB AND GUTTER INLET (AP-008 & AP-009) AND CONNECT TO EXISTING LEAD
19. INSTALL NEW CATCHPIT (SD-023) c/w CURB AND GUTTER INLET (AP-008 & AP-009) AND CONNECT TO EXISTING CATCHBASIN
20. REMOVE EXISTING FRAME AND COVER AND INSTALL NEW FRAME AND SOLID COVER (AP-005 AND AP-004)
21. REMOVE EXISTING FRAME AND COVER AND INSTALL NEW FRAME AND COVER (AP-008 & AP-009)



METRIC
WHOLE NUMBERS INDICATE MILLIMETRES
DECIMALIZED NUMBERS INDICATE METRES

150 mm W.M.	WATERMAIN	150 mm W.M.	HYDRO	— X —	PROFILE
Hydrant	HYDRANT	Hydrant	M.T.S.	— □ —	LEFT GUTTER
Valve	VALVE	Valve	CONCRETE	— ○ —	RIGHT GUTTER
300mm L.D.S.	LAND DRAINAGE SEWER	300mm L.D.S.	ASPHALT	— ◇ —	N/W PROPERTY LINE
250mm W.W.S.	WASTEWATER SEWER	250mm W.W.S.	PROPERTY LINE	— ○ —	S/E PROPERTY LINE
Manhole	MANHOLE	Manhole	SURVEY BAR		
Catch Basin	CATCH BASIN	Catch Basin	ELEVATION (235.750)		
Catch Pit	CATCH PIT	Catch Pit	TREE		
Junctions	JUNCTIONS	Junctions	SIDEWALK RAMP		
Culvert	CULVERT	Culvert	CONCRETE SIDEWALK		
Gas	GAS	Gas	FENCE		
EXISTING	LEGEND - PLAN	PROPOSED	LEGEND - PLAN	PROPOSED	LEGEND - PROFILE

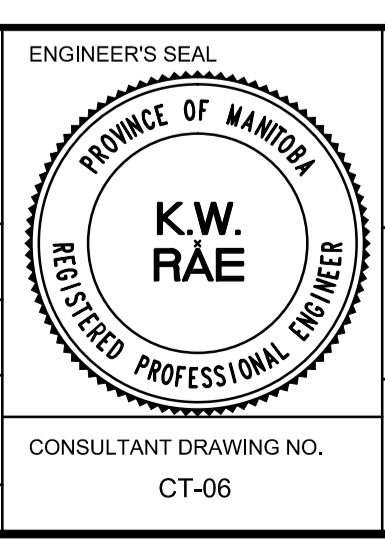
LOCATION APPROVED UNDERGROUND STRUCTURES

SUPV. U/G STRUCTURES COMMITTEE DATE

NOTE:
LOCATION OF UNDERGROUND STRUCTURES AS SHOWN ARE BASED ON THE BEST INFORMATION AVAILABLE. BUT NO GUARANTEE IS GIVEN THAT ALL EXISTING UTILITIES ARE SHOWN OR THAT THE GIVEN LOCATIONS ARE EXACT. CONFIRMATION OF EXISTENCE AND EXACT LOCATION OF ALL SERVICES MUST BE OBTAINED FROM THE INDIVIDUAL UTILITIES BEFORE PROCEEDING WITH CONSTRUCTION.

B.M. 48-58 86R406 NE Cor. Scottswood Dr & Betsworth Ave. Elev. 236.420
Tilt on top of 0.05 m sq. x 2.4 m iron tube, 8.8m S. of S. wall & 9.1m W. wall No.3 Scottswood Dr.

DESIGNED BY	SF/BC	CHECKED BY	KWR/BC
DRAWN BY	PB	APPROVED BY	
HOR. SCALE:	1:250	RELEASED FOR CONSTRUCTION BY:	
VERTICAL:	1:10	DATE	



THE CITY OF WINNIPEG
PUBLIC WORKS DEPARTMENT
ENGINEERING DIVISION

2017 LOCAL STREET RENEWAL PROGRAM

SAVOY CRESCENT-SCOTSWOOD DRIVE/ N END ASPHALT REHABILITATION STATION 0+150 TO STATION 0+260

CITY DRAWING NUMBER SHEET 06 OF 25

CONSULTANT DRAWING NO. CT-06