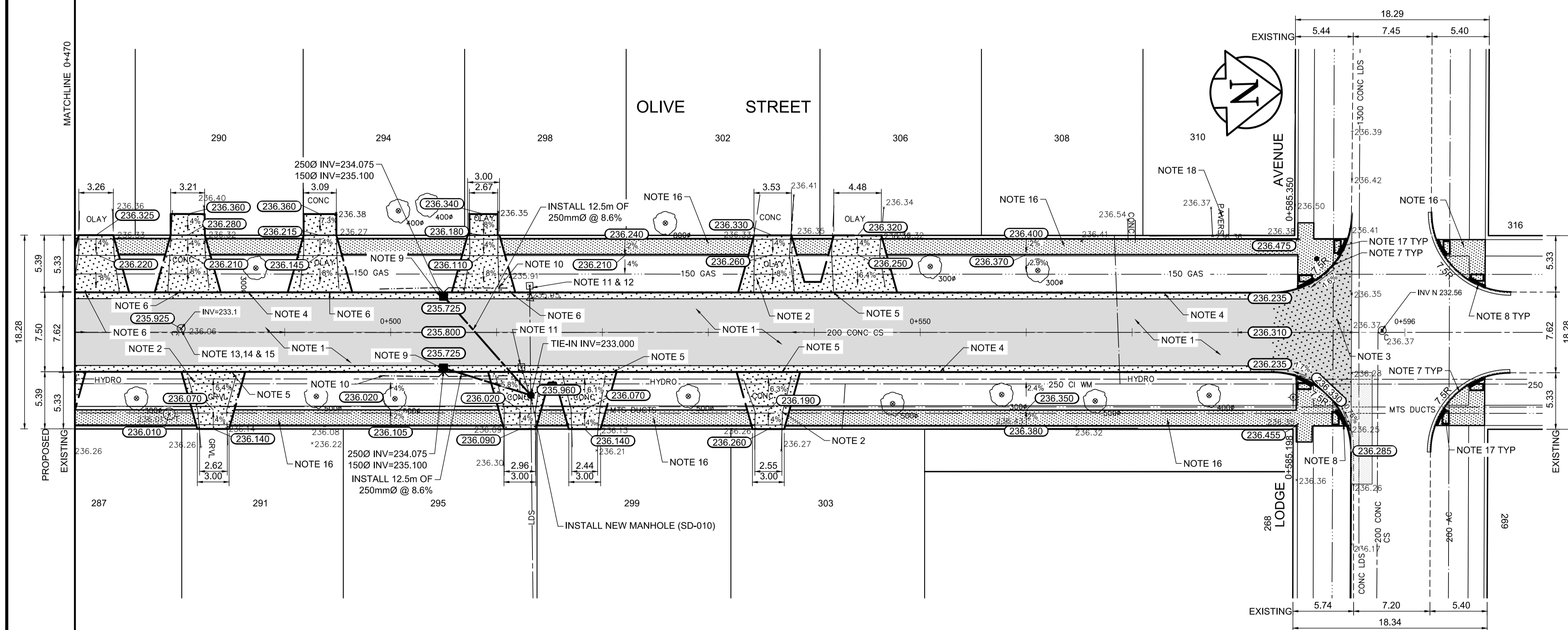


TYPICAL CROSS SECTION



- REFERENCE NOTES**
- PAVEMENT DIMENSIONS ARE TO BACK OF CURB
 - BASELINE IS CENTRE LINE RIGHT-OF-WAY
 - PROPERTY LINES OBTAINED FROM CITY OF WINNIPEG L.B.I.S., AND NO SCALE FACTOR WAS APPLIED
 - REFER TO AECOM FIELD BOOK NO. 4979
- CONSTRUCTION NOTES**
- REMOVE EXISTING CONCRETE AND ASPHALTIC PAVEMENT AND CONSTRUCT NEW ASPHALTIC PAVEMENT TYPE1A (100mm)
 - REMOVE EXISTING CONCRETE/ASPHALT PAVEMENT AND CONSTRUCT NEW 150mm REINFORCED CONCRETE PAVEMENT
 - REMOVE EXISTING CONCRETE/ASPHALT PAVEMENT AND CONSTRUCT NEW 150mm REINFORCED CONCRETE PAVEMENT c/w NEW ASPHALTIC PAVEMENT TYPE1A (65mm)
 - CONSTRUCT NEW BARRIER CURB AND GUTTER (180mm HT.)
 - CONSTRUCT NEW LIP CURB AND GUTTER (40mm HT. INTEGRAL)
 - CONSTRUCT NEW LIP CURB AND GUTTER (75mm HT. INTEGRAL)
 - CONSTRUCT NEW MODIFIED BARRIER CURB (180mm HT. INTEGRAL)
 - CONSTRUCT NEW CURB RAMP (10mm HT. INTEGRAL)
 - INSTALL NEW CURB AND GUTTER INLET c/w CATCHBASIN (SD-024, 1800mm) AND CONNECT TO THE NEW MANHOLE
 - INSTALL 150mm SUBDRAIN
 - REMOVE EXISTING CATCHBASIN AND ABANDON LEAD
 - REMOVE EXISTING CATCHPIT AND ABANDON LEAD
 - ADJUST EXISTING MANHOLE/CATCH BASIN TO GRADE
 - REMOVE EXISTING FRAME AND COVER AND INSTALL NEW FRAME AND SOLID COVER (AP-005 AND AP-004)
 - INSTALL NEW CAST IRON RISER RING
 - RENEW EXISTING 100mm CONCRETE SIDEWALK
 - INSTALL NEW DETECTABLE WARNING SURFACE TILE
 - ADJUST EXISTING PAVING STONES

AECOM
 Certificate of Authorization
 AECOM Canada Ltd.
 No. 4671 Date: _____

METRIC
 WHOLE NUMBERS INDICATE MILLIMETRES
 DECIMALIZED NUMBERS INDICATE METRES

150 mm W.M.	WATERMAIN	150 mm W.M.	HYDRO	— X —	PROFILE
Hydrant	HYDRANT	Manhole	M.T.S.	— □ —	WEST GUTTER
Valve	VALVE	Survey Bar	CONCRETE	— ○ —	EAST GUTTER
300mm L.D.S.	LAND DRAINAGE SEWER	Elevation	ASPHALT	— ◇ —	N/W PROPERTY LINE
250mm W.W.S.	WASTEWATER SEWER	Tree	PROPERTY LINE	— ○ —	S/E PROPERTY LINE
Manhole	MANHOLE	Sidewalk Ramp	SURVEY BAR	— □ —	
Catch Basin	CATCH BASIN	Concrete Sidewalk	ELEVATION	— ○ —	
Catch Pit	CATCH PIT	Fence	TREE	— ○ —	
Junctions	JUNCTIONS		SIDEWALK RAMP	— □ —	
Culvert	CULVERT		CONCRETE SIDEWALK	— □ —	
Gas	GAS		FENCE	— □ —	
EXISTING	LEGEND - PLAN	PROPOSED	LEGEND - PLAN	PROPOSED	LEGEND - PROFILE

LOCATION APPROVED UNDERGROUND STRUCTURES

SUPV. U/G STRUCTURES COMMITTEE DATE _____

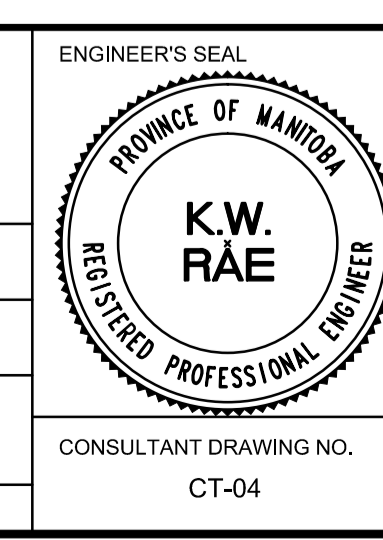
NOTE:
 LOCATION OF UNDERGROUND STRUCTURES AS SHOWN ARE BASED ON THE BEST INFORMATION AVAILABLE. BUT NO GUARANTEE IS GIVEN THAT ALL EXISTING UTILITIES ARE SHOWN OR THAT THE GIVEN LOCATIONS ARE EXACT. CONFIRMATION OF EXISTENCE AND EXACT LOCATION OF ALL SERVICES MUST BE OBTAINED FROM THE INDIVIDUAL UTILITIES BEFORE PROCEEDING WITH CONSTRUCTION.

B.M. 38 - 068 85R655 NE Cor. Lodge Ave. & Whytefold Rd., Talk on top of 0.05 m dia. x 2.4 m iron pipe, 3.4 m E. ELEV. 236.140

NO.	REVISIONS	DATE	BY	DATE
0	ISSUED FOR TENDER	05/04/2017	BC	
A	ISSUED FOR REVIEW	04/21/2017	BC	

AECOM

DESIGNED BY	BC/SS	CHECKED BY	BC/KWR
DRAWN BY	JT/PB	APPROVED BY	
HOR. SCALE:	1:250	RELEASED FOR CONSTRUCTION BY:	
VERTICAL:	1:10	DATE	



THE CITY OF WINNIPEG
 PUBLIC WORKS DEPARTMENT
 ENGINEERING DIVISION

2017 LOCAL STREET RENEWAL PROGRAM

OLIVE STREET - PORTAGE AVENUE TO LODGE AVENUE
 ASPHALT RECONSTRUCTION
 STATION 0+470 TO LODGE AVENUE

CITY DRAWING NUMBER SHEET 04 OF 25

CONSULTANT DRAWING NO. CT-04