

100 ASPHALT (TYPE 1A)
75 LIMESTONE BASE COURSE
300 CRUSHED SUB BASE MATERIAL
(MAX. SIZE 50mm)
NON WOVEN GEOTEXTILE

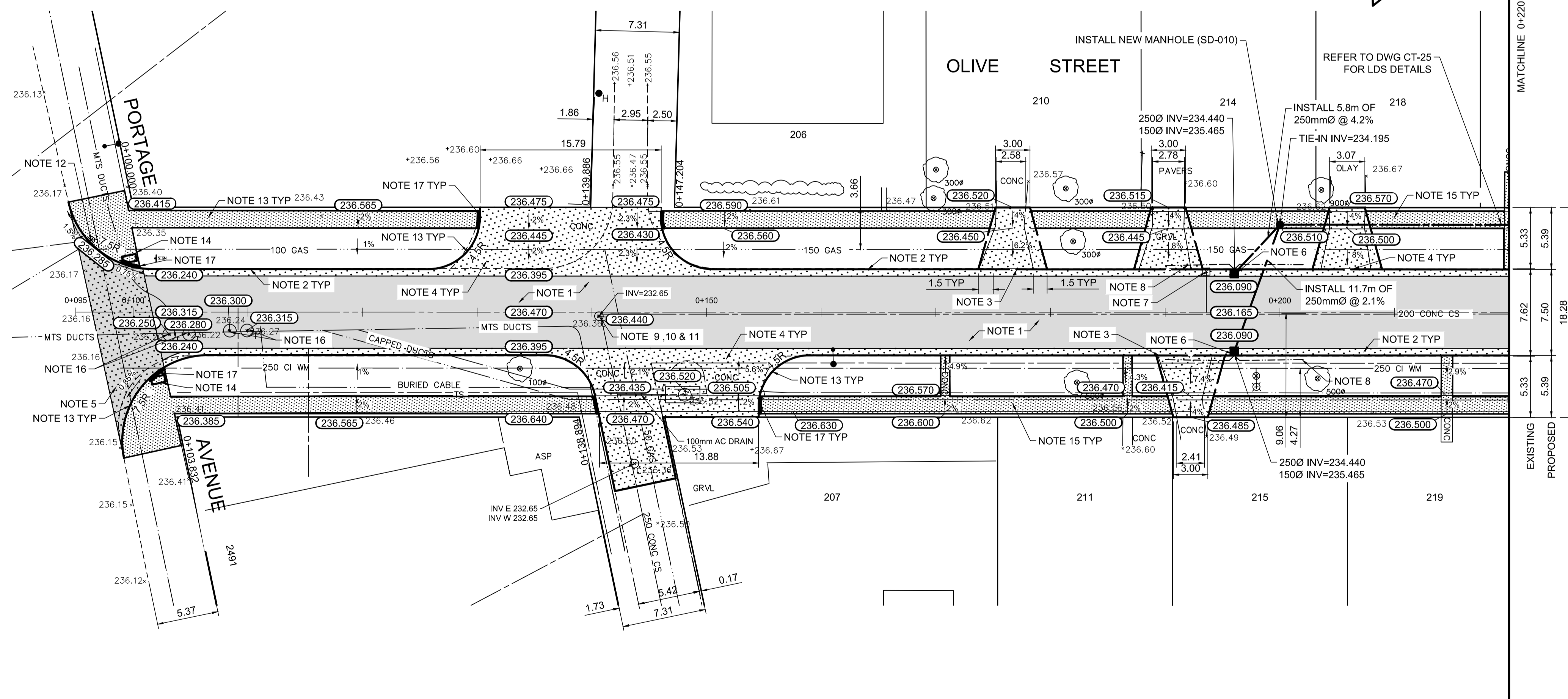
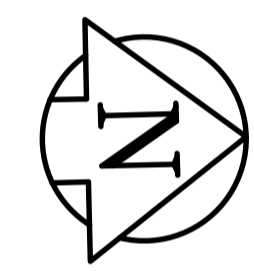
TYPICAL CROSS SECTION

REFERENCE NOTES

- A. PAVEMENT DIMENSIONS ARE TO BACK OF CURB
- B. BASELINE IS CENTRE LINE RIGHT-OF-WAY
- C. PROPERTY LINES OBTAINED FROM CITY OF WINNIPEG L.B.I.S., AND NO SCALE FACTOR WAS APPLIED
- D. REFER TO AECOM FIELD BOOK NO. 4979

CONSTRUCTION NOTES

1. REMOVE EXISTING CONCRETE AND ASPHALTIC PAVEMENT AND CONSTRUCT NEW ASPHALTIC PAVEMENT TYPE1A (100mm)
2. CONSTRUCT NEW BARRIER CURB AND GUTTER (180mm HT.)
3. CONSTRUCT NEW LIP CURB AND GUTTER (40mm HT. INTEGRAL)
4. REMOVE EXISTING CONCRETE/ASPHALT PAVEMENT AND CONSTRUCT NEW 150mm REINFORCED CONCRETE PAVEMENT
5. REMOVE EXISTING CONCRETE/ASPHALT PAVEMENT AND CONSTRUCT NEW 200mm REINFORCED CONCRETE PAVEMENT c/w ASPHALTIC OVERLAY TYPE 1A (50mm)
6. INSTALL NEW CURB AND GUTTER INLET c/w CATCHBASIN (SD-024, 1800mm) AND CONNECT TO NEW MANHOLE
7. REMOVE EXISTING CATCHBASIN AND INLET AND ABANDON LEAD
8. INSTALL 150mm SUBDRAIN
9. ADJUST EXISTING MANHOLE/CATCH BASIN TO GRADE
10. REMOVE EXISTING FRAME AND COVER AND INSTALL NEW FRAME AND SOLID COVER (AP-005 AND AP-004)
11. INSTALL NEW CAST IRON RISER RING
12. ADJUST EXISTING WATER VALVE TO GRADE
13. CONSTRUCT NEW MODIFIED BARRIER CURB (150mm HT, INTEGRAL)
14. INSTALL NEW DETECTABLE WARNING SURFACE TILE
15. RENEW EXISTING 100mm CONCRETE SIDEWALK
16. INSTALL NEW MTS RISER RING
17. CONSTRUCT NEW CURB RAMP (10mm HT. INTEGRAL)



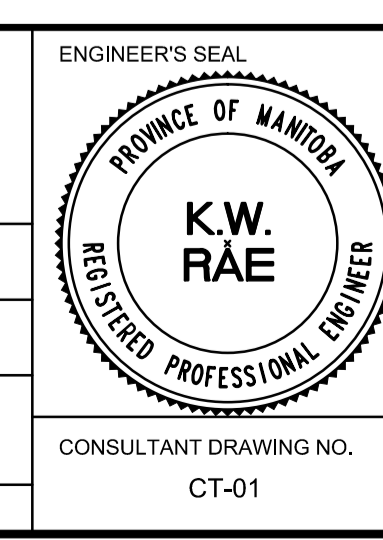
AECOM
Certificate of Authorization
AECOM Canada Ltd.
No. 4671 Date: _____

METRIC
WHOLE NUMBERS INDICATE MILLIMETRES
DECIMALIZED NUMBERS INDICATE METRES

150 mm W.M.	WATERMAIN	150 mm W.M.	HYDRO	X	PROFILE	LOCATION APPROVED
300mm L.D.S.	LAND DRAINAGE SEWER	300mm L.D.S.	M.T.S.	□	WEST GUTTER	UNDERGROUND STRUCTURES
250mm W.W.S.	WASTEWATER SEWER	250mm W.W.S.	CONCRETE	○	EAST GUTTER	
	MANHOLE		ASPHALT	◇	N/W PROPERTY LINE	
	CATCH BASIN		PROPERTY LINE	○	S/E PROPERTY LINE	
	CATCH PIT		SURVEY BAR			
	JUNCTIONS		ELEVATION (235.750)			
	CULVERT		TREE			
	GAS		SIDEWALK RAMP			
EXISTING	LEGEND - PLAN	PROPOSED	CONCRETE SIDEWALK			
			FENCE			

NOTE:
LOCATION OF UNDERGROUND STRUCTURES AS SHOWN ARE BASED ON THE BEST INFORMATION AVAILABLE. BUT NO GUARANTEE IS GIVEN THAT ALL EXISTING UTILITIES ARE SHOWN OR THAT THE GIVEN LOCATIONS ARE EXACT. CONFIRMATION OF EXISTENCE AND EXACT LOCATION OF ALL SERVICES MUST BE OBTAINED FROM THE INDIVIDUAL UTILITIES BEFORE PROCEEDING WITH CONSTRUCTION.

B.M. 38 - 068	85R655 NE Cor. Lodge Ave. & Whytewold Rd.,	
ELEV. 236.140	Tie on top of 0.05 m dia. x 2.4 m iron pipe, 3.4 m E	
	of W.L. of Whytewold Rd. & on N.L. of Lodge Ave.	
DESIGNED BY	BC/SS	CHECKED BY
DRAWN BY	JT/PB	APPROVED BY
HOR. SCALE:	1:250	RELEASED FOR CONSTRUCTION BY:
VERTICAL:	1:10	
NO.	ISSUED FOR TENDER	05/04/2017
	ISSUED FOR REVIEW	04/21/2017
	REVISIONS	



THE CITY OF WINNIPEG
PUBLIC WORKS DEPARTMENT
ENGINEERING DIVISION

2017 LOCAL STREET RENEWAL PROGRAM

OLIVE STREET - PORTAGE AVENUE TO LODGE AVENUE
ASPHALT RECONSTRUCTION
PORTAGE AVENUE TO STATION 0+220

CITY DRAWING NUMBER: SHEET 01 OF 25

CONSULTANT DRAWING NO. CT-01