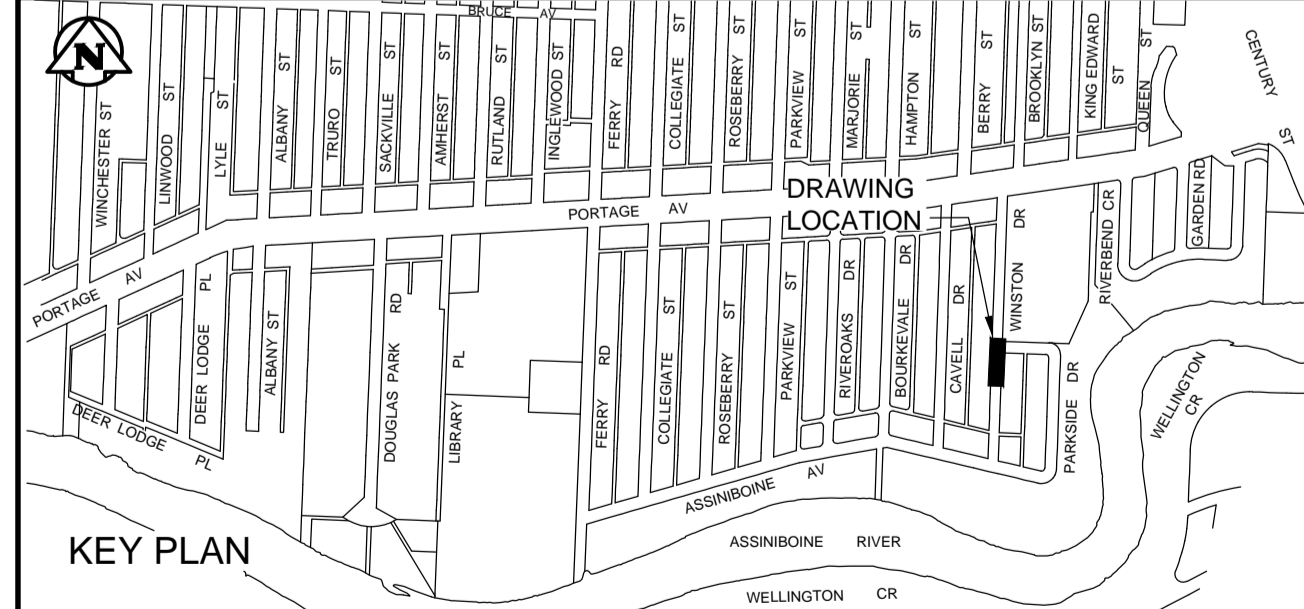


- CONSTRUCTION NOTES:**
1. LOCATION OF ALL SEWER AND WATER LINES TO BE CONFIRMED IN THE FIELD.
 2. SEWER AND WATER SERVICES SHOWN ON DRAWINGS ARE APPROXIMATE ONLY.
 3. INSTALL NEW SEWER AND CATCHBASIN LEADS BY TRENCHLESS METHODS, UNLESS NOTED OTHERWISE.
 4. INSTALL TYPE 'B' RISERS ON CATCHBASIN LEADS AS REQUIRED.

- GENERAL NOTES:**
1. CHAINAGE IS EAST LIMIT OF WINTON ROAD.
 2. STATION 1+00 = NORTH LIMIT OF ASSINIBOINE AVENUE AND EAST LIMIT OF WINTON RD.
 3. SEE SPECIFICATIONS FOR DETAILED TEST HOLE INFORMATION.



BID OPPORTUNITY No. 269-2017



WARNING
IF POWER EQUIPMENT OR EXPLOSIVES ARE TO BE USED FOR EXCAVATION ON THIS PROJECT THE CONTRACTOR MUST:
1. NOTIFY THE GAS COMPANY OF THE PROPOSED LOCATION OF EXCAVATION.
2. TAKE PRECAUTION TO AVOID DAMAGE TO GAS COMPANY INSTALLATIONS. SEE PROVINCIAL REGULATION 149/92 FOR DETAILS.

EXISTING	LEGEND-PLAN	PROPOSED	EXISTING	LEGEND-PLAN	PROPOSED	EXISTING	LEGEND-PLAN	PROPOSED
150 WM	WATERMAIN	150 WM	BEND	ANCHOR	ANCHOR	400 FM	FEEDERMAIN	400 FM
300 LDS	LAND DRAINAGE SEWER	300 LDS	TEE	TREE	TREE	250 WWS	WASTEWATER SEWER	250 WWS
300 CS	COMBINED SEWER	300 CS	CURB STOP	LEGAL DIMENSION	LEGAL DIMENSION	200 FCM	FORCEMAIN	200 FCM
JUNCTIONS	JUNCTIONS	JUNCTIONS	PLUG	SURVEY BAR	SURVEY BAR	HYDRANT	HYDRANT	HYDRANT
VALVE	VALVE	VALVE	MANHOLE	TRAFFIC SIGNAL	TRAFFIC SIGNAL	REDUCER	REDUCER	REDUCER
LEGEND-PLAN	LEGEND-PLAN	LEGEND-PLAN	CATCHBASIN	GAS	GAS	LEGEND-PLAN	LEGEND-PLAN	LEGEND-PLAN
			CURB INLET	HYDRO	HYDRO			
			ADDRESS	CONCRETE PAVEMENT	CONCRETE PAVEMENT			
			HYDRO POLE	SIDEWALK	SIDEWALK			
			LIGHT STANDARD	CURB	CURB			

LOCATION APPROVED UNDERGROUND STRUCTURES

SUPV. U/G STRUCTURES COMMITTEE DATE

NOTE: LOCATION OF UNDERGROUND STRUCTURES AS SHOWN ARE BASED ON THE BEST INFORMATION AVAILABLE. BUT NO GUARANTEE IS GIVEN THAT ALL EXISTING UTILITIES ARE SHOWN OR THAT THE GIVEN LOCATIONS ARE EXACT. CONFIRMATION OF EXISTENCE AND EXACT LOCATION OF ALL SERVICES MUST BE OBTAINED FROM THE INDIVIDUAL UTILITIES BEFORE PROCEEDING WITH CONSTRUCTION.

NO.	REVISIONS	DATE	BY
00	ISSUED FOR TENDER	2017.03.28	KJM

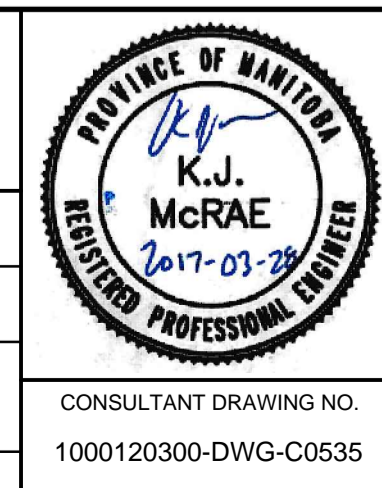
TETRA TECH

DESIGNED BY: KJM
CHECKED BY: KJM
DRAWN BY: NL
APPROVED BY: GS

HOR. SCALE: 1 : 250
VERTICAL: 1 : 50

RELEASED FOR CONSTRUCTION

CONSULTANT DRAWING NO. 1000120300-DWG-C0535



THE CITY OF WINNIPEG WATER AND WASTE DEPARTMENT

FERRY ROAD AND RIVERBEND COMBINED SEWER RELIEF WORKS CONTRACT SE-2

WINSTON DRIVE
100m NORTH OF ASSINIBOINE AVENUE TO PARKSIDE DRIVE (NORTH LEG)

CITY DRAWING NUMBER LD-8175
SHEET 10 OF 10
C0535