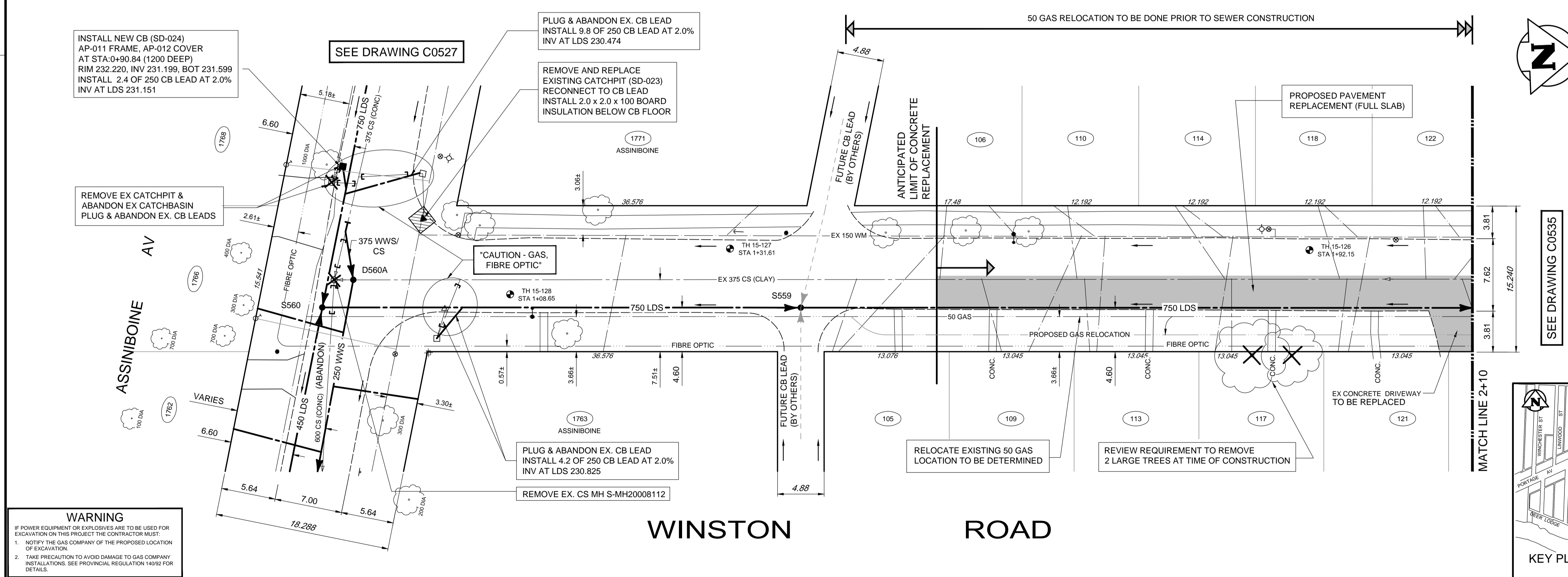


- CONSTRUCTION NOTES:**
1. LOCATION OF ALL SEWER AND WATER LINES TO BE CONFIRMED IN THE FIELD.
  2. SEWER AND WATER SERVICES SHOWN ON DRAWINGS ARE APPROXIMATE ONLY.
  3. INSTALL NEW SEWER AND CATCHBASIN LEADS BY TRENCHLESS METHODS, UNLESS NOTED OTHERWISE.
  4. INSTALL TYPE 'B' RISERS ON CATCHBASIN LEADS AS REQUIRED.
- GENERAL NOTES:**
1. CHAINAGE IS EAST LIMIT OF WINTON ROAD.
  2. STATION 1+00 = NORTH LIMIT OF ASSINIBOINE AVENUE AND EAST LIMIT OF WINSTON RD.
  3. SEE SPECIFICATIONS FOR DETAILED TEST HOLE INFORMATION.



**WARNING**

IF POWER EQUIPMENT OR EXPLOSIVES ARE TO BE USED FOR EXCAVATION ON THIS PROJECT THE CONTRACTOR MUST:

1. NOTIFY THE GAS COMPANY OF THE PROPOSED LOCATION OF EXCAVATION.
2. TAKE PRECAUTION TO AVOID DAMAGE TO GAS COMPANY INSTALLATIONS. SEE PROVINCIAL REGULATION 149/92 FOR DETAILS.

EXISTING	LEGEND-PLAN	PROPOSED	EXISTING	LEGEND-PLAN	PROPOSED	EXISTING	LEGEND-PLAN	PROPOSED
150 WM	WATERMAIN	150 WM	BEND			ANCHOR		
400 FM	FEEDERMAIN	400 FM	TEE			TREE		
300 LDS	LAND DRAINAGE SEWER	300 LDS	CURB STOP			LEGAL DIMENSION		
250 WWS	WASTEWATER SEWER	250 WWS	PLUG			SURVEY BAR		
300 CS	COMBINED SEWER	300 CS	MANHOLE			TRAFFIC SIGNAL		
200 FCM	FORCEMAIN	200 FCM	CATCHBASIN			GAS		
	JUNCTIONS		CURB INLET			HYDRO		
	HYDRANT		ADDRESS			CONCRETE PAVEMENT		
	VALVE		HYDRO POLE			SIDEWALK		
	REDUCER		LIGHT STANDARD			CURB		

**LOCATION APPROVED UNDERGROUND STRUCTURES**

SUPV. U/G STRUCTURES COMMITTEE DATE

NOTE: LOCATION OF UNDERGROUND STRUCTURES AS SHOWN ARE BASED ON THE BEST INFORMATION AVAILABLE. BUT NO GUARANTEE IS GIVEN THAT ALL EXISTING UTILITIES ARE SHOWN OR THAT THE GIVEN LOCATIONS ARE EXACT. CONFIRMATION OF EXISTENCE AND EXACT LOCATION OF ALL SERVICES MUST BE OBTAINED FROM THE INDIVIDUAL UTILITIES BEFORE PROCEEDING WITH CONSTRUCTION.

B.M. CITY OF WINNIPEG 38-069  
ELEV. 233.792m

NO.	ISSUED FOR TENDER	DATE	BY
00	ISSUED FOR TENDER	2017.03.28	KJM

**TETRA TECH**

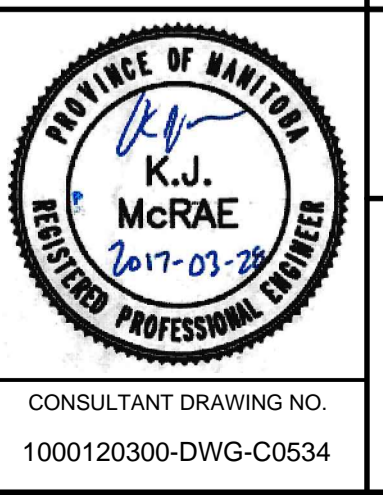
DESIGNED BY	CHECKED BY
KJM	KJM

DRAWN BY	APPROVED BY
NL	GS

HOR. SCALE: 1 : 250  
VERTICAL: 1 : 50

RELEASSED FOR CONSTRUCTION

CONSULTANT DRAWING NO. 1000120300-DWG-C0534

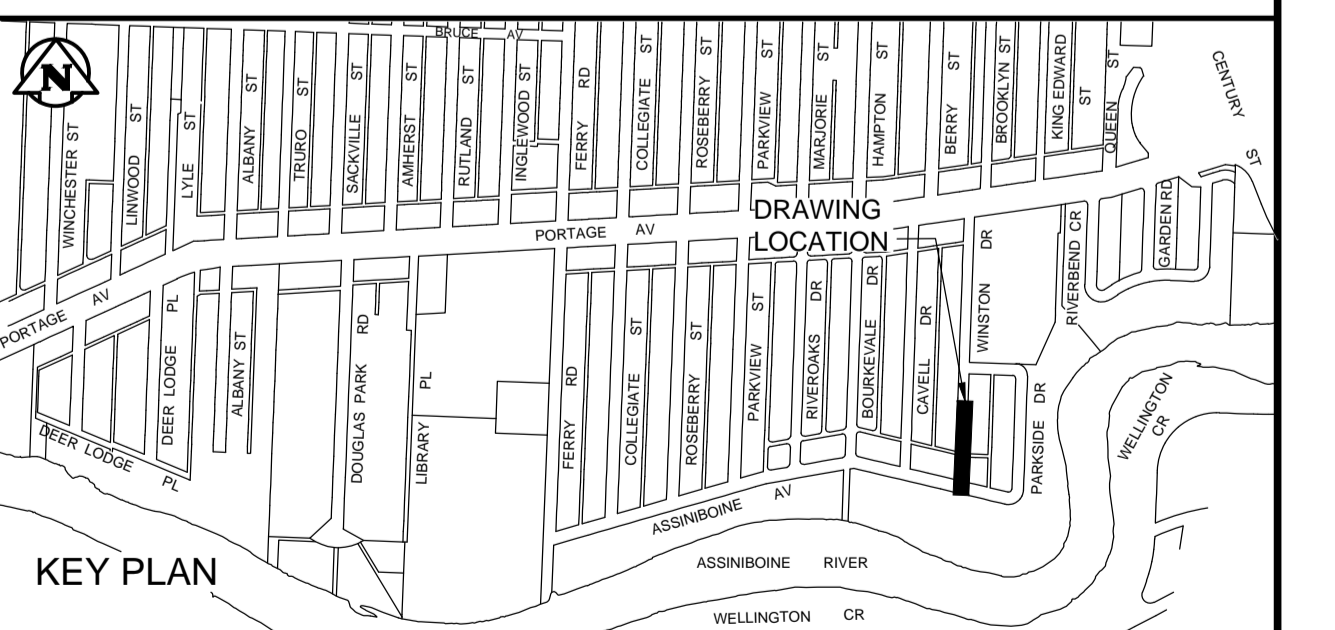


**THE CITY OF WINNIPEG WATER AND WASTE DEPARTMENT**

FERRY ROAD AND RIVERBEND COMBINED SEWER RELIEF WORKS CONTRACT SE-2

**WINSTON ROAD**  
ASSINIBOINE AVENUE TO 100m NORTH OF ASSINIBOINE AVENUE

CITY DRAWING NUMBER **LD-8174**  
SHEET **9** OF **10**  
**C0534**



**ENGINEERS GEOSCIENTISTS MANITOBA**

Certificate of Authorization  
**Tetra Tech Canada Inc.**  
No. 6499

BID OPPORTUNITY No. 269-2017