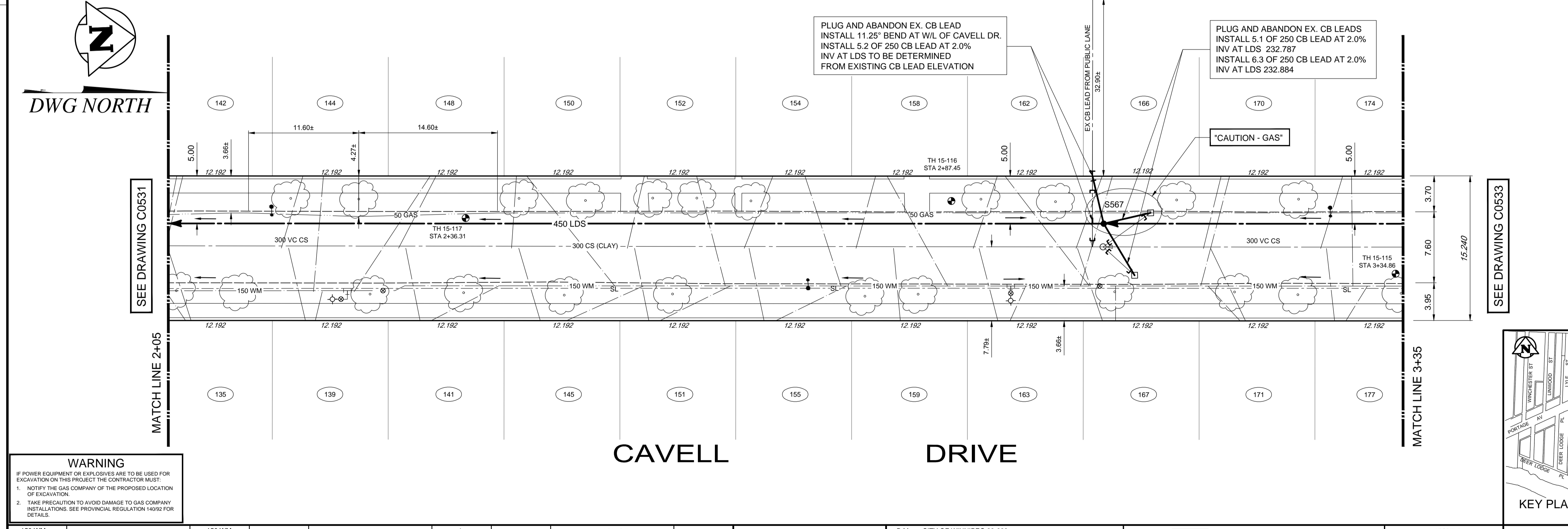


- CONSTRUCTION NOTES:**
- LOCATION OF ALL SEWER AND WATER LINES TO BE CONFIRMED IN THE FIELD.
  - SEWER AND WATER SERVICES SHOWN ON DRAWINGS ARE APPROXIMATE ONLY.
  - INSTALL NEW SEWER AND CATCHBASIN LEADS BY TRENCHLESS METHODS, UNLESS NOTED OTHERWISE.
  - INSTALL TYPE 'B' RISERS ON CATCHBASIN LEADS AS REQUIRED.
- GENERAL NOTES:**
- CHAINAGE IS ALONG WEST LIMIT OF CAVELL DR.
  - STATION 1+00 = WEST LIMIT OF CAVELL DR AND NORTH LIMIT OF ASSINIBOINE AVE.
  - SEE SPECIFICATIONS FOR DETAILED TEST HOLE INFORMATION.



**WARNING**

IF POWER EQUIPMENT OR EXPLOSIVES ARE TO BE USED FOR EXCAVATION ON THIS PROJECT THE CONTRACTOR MUST:

- NOTIFY THE GAS COMPANY OF THE PROPOSED LOCATION OF EXCAVATION.
- TAKE PRECAUTION TO AVOID DAMAGE TO GAS COMPANY INSTALLATIONS. SEE PROVINCIAL REGULATION 149/92 FOR DETAILS.

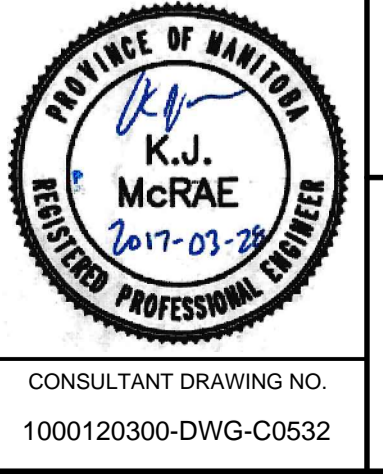
EXISTING	LEGEND-PLAN	PROPOSED	EXISTING	LEGEND-PLAN	PROPOSED	EXISTING	LEGEND-PLAN	PROPOSED
150 WM	WATERMAIN	150 WM	BEND	ANCHOR	LOCATION APPROVED UNDERGROUND STRUCTURES	B.M. CITY OF WINNIPEG 38-069	ELEV. 233.792m	
400 FM	FEEDERMAIN	400 FM	TEE	TREE				
300 LDS	LAND DRAINAGE SEWER	300 LDS	CURB STOP	LEGAL DIMENSION				
250 WWS	WASTEWATER SEWER	250 WWS	PLUG	SURVEY BAR				
300 CS	COMBINED SEWER	300 CS	MANHOLE	TRAFFIC SIGNAL				
200 FCM	FORCEMAIN	200 FCM	CATCHBASIN	GAS				
	JUNCTIONS		CURB INLET	HYDRO				
	HYDRANT		ADDRESS	MTS				
	VALVE		HYDRO POLE	SIDEWALK				
	REDUCER		LIGHT STANDARD	CURB				

NO.	REVISIONS	DATE	BY
00	ISSUED FOR TENDER	2017.03.28	KJM

DESIGNED BY	CHECKED BY	DRAWN BY	APPROVED BY	HOR. SCALE	VERTICAL	RELEASED FOR CONSTRUCTION
KJM	KJM	NL	GS	1:250	1:50	

**TETRA TECH**

CONSULTANT DRAWING NO. 1000120300-DWG-C0532



**THE CITY OF WINNIPEG**  
WATER AND WASTE DEPARTMENT

FERRY ROAD AND RIVERBEND  
COMBINED SEWER RELIEF WORKS  
CONTRACT SE-2  
CAVELL DRIVE  
105m NORTH OF ASSINIBOINE AVE TO STA 3+35

CITY DRAWING NUMBER **LD-8172**  
SHEET **7** OF **10**  
**C0532**



BID OPPORTUNITY No. 269-2017

