

- CONSTRUCTION NOTES:**
1. LOCATION OF ALL SEWER AND WATER LINES TO BE CONFIRMED IN THE FIELD.
 2. SEWER AND WATER SERVICES SHOWN ON DRAWINGS ARE APPROXIMATE ONLY.
 3. INSTALL NEW SEWER AND CATCHBASIN LEADS BY TRENCHLESS METHODS, UNLESS NOTED OTHERWISE.
 4. INSTALL TYPE 'B' RISERS ON CATCHBASIN LEADS AS REQUIRED.
- GENERAL NOTES:**
1. CHAINAGE IS ALONG WEST LIMIT OF BOURKEVALE DR.
 2. STATION 1+00 = WEST LIMIT OF BOURKEVALE DR AND NORTH LIMIT OF ASSINBOINE AVE.
 3. SEE SPECIFICATIONS FOR DETAILED TEST HOLE INFORMATION.

WARNING
 IF POWER EQUIPMENT OR EXPLOSIVES ARE TO BE USED FOR EXCAVATION ON THIS PROJECT THE CONTRACTOR MUST:
 1. NOTIFY THE GAS COMPANY OF THE PROPOSED LOCATION OF EXCAVATION.
 2. TAKE PRECAUTION TO AVOID DAMAGE TO GAS COMPANY INSTALLATIONS. SEE PROVINCIAL REGULATION 143/92 FOR DETAILS.

EXISTING	LEGEND-PLAN	PROPOSED	EXISTING	LEGEND-PLAN	PROPOSED	EXISTING	LEGEND-PLAN	PROPOSED
150 WM	WATERMAIN	150 WM	BEND			ANCHOR		
400 FM	FEEDERMAIN	400 FM	TEE			TREE		
300 LDS	LAND DRAINAGE SEWER	300 LDS	CURB STOP			LEGAL DIMENSION		
250 WWS	WASTEWATER SEWER	250 WWS	PLUG			SURVEY BAR		
300 CS	COMBINED SEWER	300 CS	MANHOLE			TRAFFIC SIGNAL		
200 FCM	FORCEMAIN	200 FCM	CATCHBASIN			GAS		
	JUNCTIONS		CURB INLET			HYDRO		
	HYDRANT		ADDRESS			ASPHALT		
	VALVE		HYDRO POLE			SIDEWALK		
	REDUCER		LIGHT STANDARD			CURB		

LOCATION APPROVED UNDERGROUND STRUCTURES

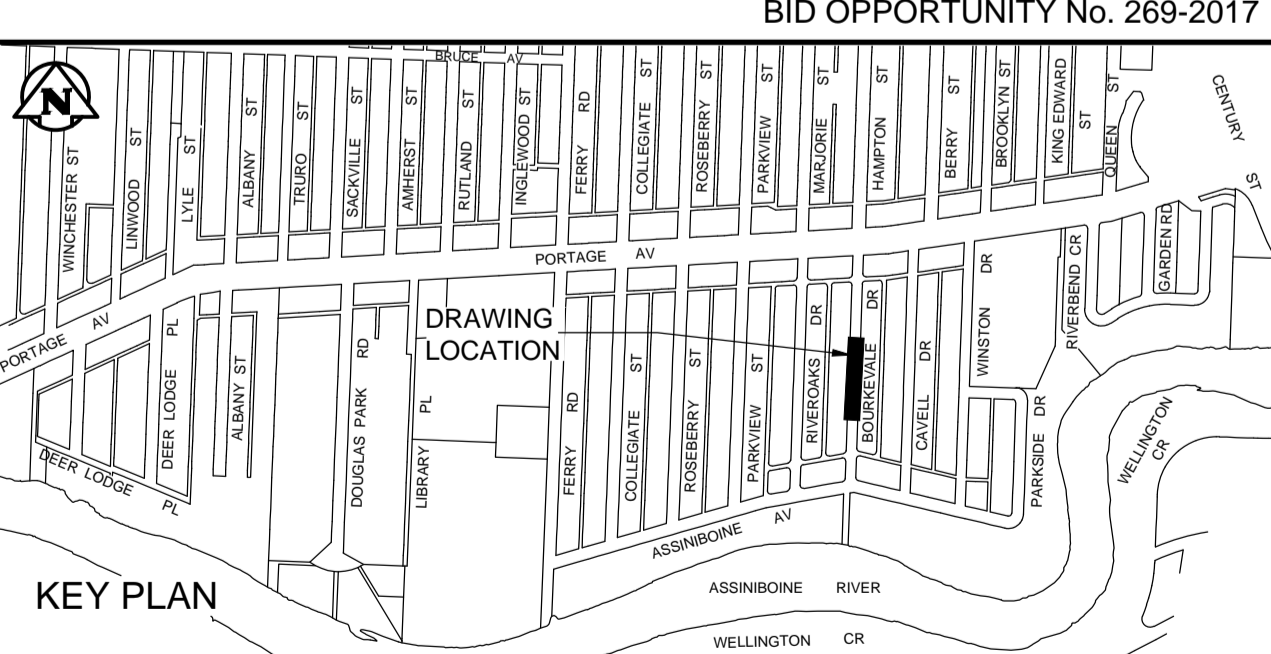
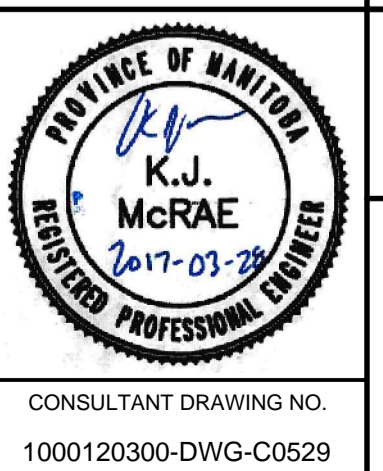
SUPV. U/G STRUCTURES COMMITTEE DATE

NOTE:
 LOCATION OF UNDERGROUND STRUCTURES AS SHOWN ARE BASED ON THE BEST INFORMATION AVAILABLE. BUT NO GUARANTEE IS GIVEN THAT THE GIVEN LOCATIONS ARE EXACT. CONFIRMATION OF EXISTENCE AND EXACT LOCATION OF ALL SERVICES MUST BE OBTAINED FROM THE INDIVIDUAL UTILITIES BEFORE PROCEEDING WITH CONSTRUCTION.

NO.	ISSUED FOR TENDER	DATE	BY
00	ISSUED FOR TENDER	2017.03.28	KJM

TETRA TECH
 Certificate of Authorization
 TETRA TECH WEI Inc.
 No. 5313 Date: April 30, 2017

DESIGNED BY: KJM
 CHECKED BY: KJM
 DRAWN BY: NL
 APPROVED BY: GS
 HOR. SCALE: 1 : 250
 VERTICAL: 1 : 50
 RELEASED FOR CONSTRUCTION



THE CITY OF WINNIPEG
 WATER AND WASTE DEPARTMENT

FERRY ROAD AND RIVERBEND
 COMBINED SEWER RELIEF WORKS
 CONTRACT SE-2
BOURKEVALE DRIVE
 90m NORTH OF ASSINBOINE AVE
 TO STA 3+00

CITY DRAWING NUMBER
LD-8169
 SHEET 4 OF 10
C0529