

- CONSTRUCTION NOTES:**
1. LOCATION OF ALL SEWER AND WATER LINES TO BE CONFIRMED IN THE FIELD.
 2. SEWER AND WATER SERVICES SHOWN ON DRAWINGS ARE APPROXIMATE ONLY.
 3. INSTALL NEW SEWER AND CATCHBASIN LEADS BY TRENCHLESS METHODS, UNLESS NOTED OTHERWISE.
 4. INSTALL TYPE 'B' RISERS ON CATCHBASIN LEADS AS REQUIRED.

- GENERAL NOTES:**
1. CHAINAGE IS ALONG WEST LIMIT OF BOURKEVALE DR.
 2. STATION 1+00 = WEST LIMIT OF BOURKEVALE DR AND NORTH LIMIT OF ASSINIBOINE AVE.
 3. SEE SPECIFICATIONS FOR DETAILED TEST HOLE INFORMATION.

WARNING
 IF POWER EQUIPMENT OR EXPLOSIVES ARE TO BE USED FOR EXCAVATION ON THIS PROJECT THE CONTRACTOR MUST:
 1. NOTIFY THE GAS COMPANY OF THE PROPOSED LOCATION OF EXCAVATION.
 2. TAKE PRECAUTION TO AVOID DAMAGE TO GAS COMPANY INSTALLATIONS. SEE PROVINCIAL REGULATION 149/92 FOR DETAILS.

| EXISTING | LEGEND-PLAN | PROPOSED | EXISTING | LEGEND-PLAN | PROPOSED | EXISTING | LEGEND-PLAN | PROPOSED |
|----------|---------------------|----------|----------------|----------------|----------------|----------|-----------------|-----------------|
| 150 WM | WATERMAIN | 150 WM | ANCHOR | ANCHOR | ANCHOR | 15.240 | LEGAL DIMENSION | LEGAL DIMENSION |
| 400 FM | FEEDERMAIN | 400 FM | TREE | TREE | TREE | | | |
| 300 LDS | LAND DRAINAGE SEWER | 300 LDS | CURB STOP | CURB STOP | CURB STOP | | | |
| 250 WWS | WASTEWATER SEWER | 250 WWS | PLUG | PLUG | PLUG | | | |
| 300 CS | COMBINED SEWER | 300 CS | MANHOLE | MANHOLE | MANHOLE | | | |
| 200 FCM | FORCEMAIN | 200 FCM | CATCHBASIN | CATCHBASIN | CATCHBASIN | | | |
| | JUNCTIONS | | CURB INLET | CURB INLET | CURB INLET | | | |
| | HYDRANT | | ADDRESS | ADDRESS | ADDRESS | | | |
| | VALVE | | HYDRO POLE | HYDRO POLE | HYDRO POLE | | | |
| | REDUCER | | LIGHT STANDARD | LIGHT STANDARD | LIGHT STANDARD | | | |
| | | | | | | | | |

LOCATION APPROVED UNDERGROUND STRUCTURES

SUPV. U/G STRUCTURES COMMITTEE DATE

NOTE:
 LOCATION OF UNDERGROUND STRUCTURES AS SHOWN ARE BASED ON THE BEST INFORMATION AVAILABLE. BUT NO GUARANTEE IS GIVEN OR THAT THE GIVEN LOCATIONS ARE EXACT. CONFIRMATION OF EXISTENCE AND EXACT LOCATION OF ALL SERVICES MUST BE OBTAINED FROM THE INDIVIDUAL UTILITIES BEFORE PROCEEDING WITH CONSTRUCTION.

| NO. | REVISIONS | DATE | BY |
|-----|-------------------|------------|-----|
| 00 | ISSUED FOR TENDER | 2017.03.28 | KJM |

B.M. CITY OF WINNIPEG 38-069
 ELEV. 233.792m

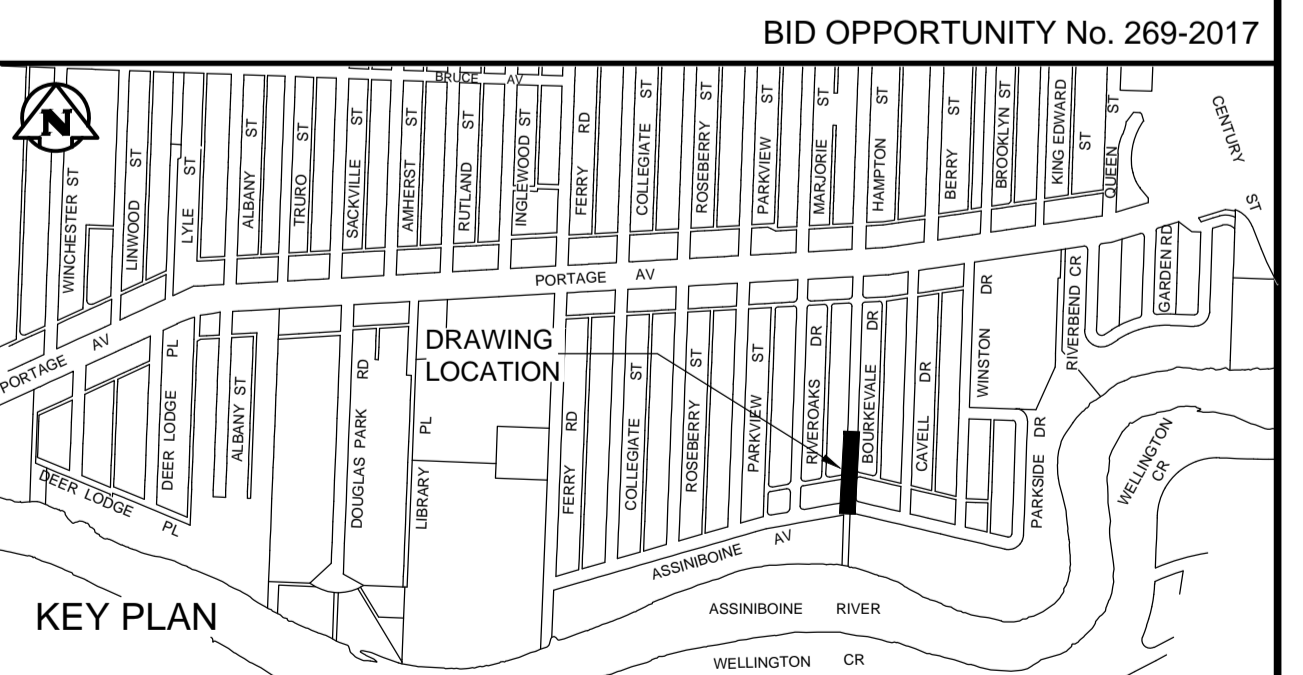
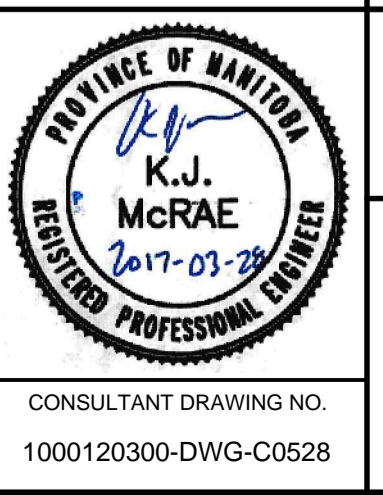
TETRA TECH

DESIGNED BY: KJM
 CHECKED BY: KJM
 DRAWN BY: NL
 APPROVED BY: GS

HOR. SCALE: 1:250
 VERTICAL: 1:50

RELEASED FOR CONSTRUCTION

CONSULTANT DRAWING NO. 1000120300-DWG-C0528



THE CITY OF WINNIPEG
 WATER AND WASTE DEPARTMENT

FERRY ROAD AND RIVERBEND
 COMBINED SEWER RELIEF WORKS
 CONTRACT SE-2

BOURKEVALE DRIVE
 ASSINIBOINE AVE TO
 90m NORTH OF ASSINIBOINE AVE

CITY DRAWING NUMBER: LD-8168
 SHEET 3 OF 10
 C0528