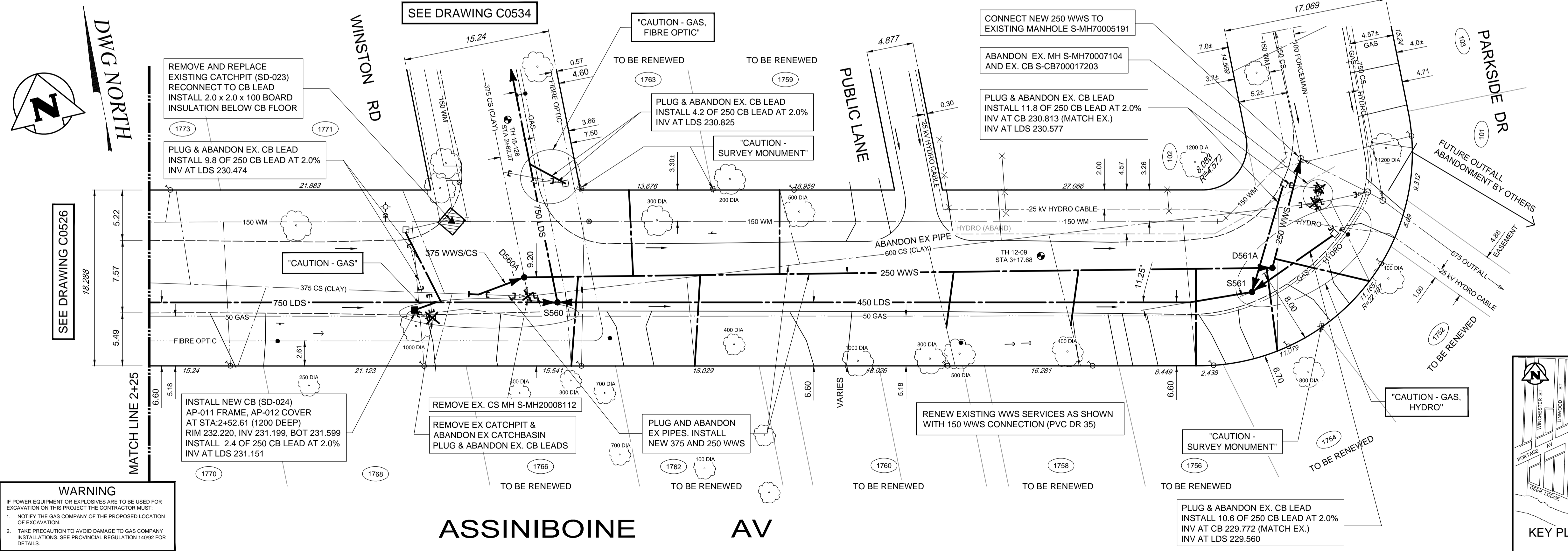


- CONSTRUCTION NOTES:**
1. LOCATION OF ALL SEWER AND WATER LINES TO BE CONFIRMED IN THE FIELD.
 2. SEWER AND WATER SERVICES SHOWN ON DRAWINGS ARE APPROXIMATE ONLY.
 3. INSTALL NEW SEWER AND CATCHBASIN LEADS BY TRENCHLESS METHODS, UNLESS NOTED OTHERWISE.
 4. INSTALL TYPE 'B' RISERS ON CATCHBASIN LEADS AS REQUIRED.
- GENERAL NOTES:**
1. CHAINAGE IS ALONG SOUTH LIMIT OF ASSINIBOINE AVE.
 2. STATION 1+00 = SE CORNER OF ASSINIBOINE AVE AND BOURKEVALE DRIVE.
 3. SEE SPECIFICATIONS FOR DETAILED TEST HOLE INFORMATION.

SEWER CONNECTION DATA				
ADDRESS	SIZE & TYPE	SEWER CONNECTION LOCATION	COMMENTS	INVERT AT PL
1752 ASSINIBOINE AVE (RESIDENTIAL)	UNKNOWN	1.6m E MH AT WPL PARKSIDE		UNKNOWN
1754 ASSINIBOINE AVE (RESIDENTIAL)	UNKNOWN	UNKNOWN		UNKNOWN
1756 ASSINIBOINE AVE (RESIDENTIAL)	UNKNOWN	68.5m E MH AT WINSTON		UNKNOWN
1758 ASSINIBOINE AVE (RESIDENTIAL)	150	54.5 M E MH AT WINSTON		UNKNOWN
1759 ASSINIBOINE AVE (RESIDENTIAL)	UNKNOWN	SEWER JCT MEAS - 53.9m W MH PARKSIDE		UNKNOWN
1760 ASSINIBOINE AVE (RESIDENTIAL)	150	41.9 M E MH AT WINSTON		UNKNOWN
1762 ASSINIBOINE AVE (RESIDENTIAL)	150	16.6m E MH AT WINSTON		UNKNOWN
1763 ASSINIBOINE AVE (RESIDENTIAL)	UNKNOWN	UNKNOWN		UNKNOWN
1766 ASSINIBOINE AVE (RESIDENTIAL)	150	3.9m E MH AT WINSTON		UNKNOWN
1768 ASSINIBOINE AVE (RESIDENTIAL)	UNKNOWN	SEWER JCT MEAS - 7.9 W MH WINSTON		UNKNOWN
1770 ASSINIBOINE AVE (RESIDENTIAL)	150	56.5m E MH AT CAVELL		UNKNOWN
1771 ASSINIBOINE AVE (RESIDENTIAL)	UNKNOWN	SEWER JCT MEAS - 8.7 W MH WINSTON		UNKNOWN
1773 ASSINIBOINE AVE (RESIDENTIAL)	UNKNOWN	SEWER JCT MEAS - 35.1m W MH WINSTON		UNKNOWN
101 PARKSIDE DR (RESIDENTIAL)	UNKNOWN	SEWER JCT MEAS - 6.1m N MH PARKSIDE, ASSINIBOINE		UNKNOWN
102 PARKSIDE DR (RESIDENTIAL)	UNKNOWN	19.6m N MH ASSNBNE & PKSD		UNKNOWN
103 PARKSIDE DR (RESIDENTIAL)	UNKNOWN	SEWER JCT MEAS - 19.6m N MH ASSNBNE & PKSD		UNKNOWN



ENGINEERS GEOSCIENTISTS MANITOBA
 Certificate of Authorization
 Tetra Tech Canada Inc.
 No. 6499



WARNING
 IF POWER EQUIPMENT OR EXPLOSIVES ARE TO BE USED FOR EXCAVATION ON THIS PROJECT THE CONTRACTOR MUST:
 1. NOTIFY THE GAS COMPANY OF THE PROPOSED LOCATION OF EXCAVATION.
 2. TAKE PRECAUTION TO AVOID DAMAGE TO GAS COMPANY INSTALLATIONS. SEE PROVINCIAL REGULATION 149/92 FOR DETAILS.

EXISTING	LEGEND-PLAN	PROPOSED	EXISTING	LEGEND-PLAN	PROPOSED	EXISTING	LEGEND-PLAN	PROPOSED
150 WM	WATERMAIN	150 WM	TEE	TEE	TEE	ANCHOR	ANCHOR	ANCHOR
400 FM	FEEDERMAIN	400 FM	CURB STOP	CURB STOP	CURB STOP	TREE	TREE	TREE
300 LDS	LAND DRAINAGE SEWER	300 LDS	PLUG	PLUG	PLUG	LEGAL DIMENSION	LEGAL DIMENSION	LEGAL DIMENSION
250 WWS	WASTEWATER SEWER	250 WWS	MANHOLE	MANHOLE	MANHOLE	SURVEY BAR	SURVEY BAR	SURVEY BAR
300 CS	COMBINED SEWER	300 CS	CATCHBASIN MANHOLE	CATCHBASIN MANHOLE	CATCHBASIN MANHOLE	TRAFFIC SIGNAL	TRAFFIC SIGNAL	TRAFFIC SIGNAL
200 FCM	FORCEMAIN	200 FCM	CATCHBASIN	CATCHBASIN	CATCHBASIN	GAS	GAS	GAS
+	JUNCTIONS	+	CURB INLET	CURB INLET	CURB INLET	HYDRO	HYDRO	HYDRO
+	HYDRANT	+	HYDRO POLE	HYDRO POLE	HYDRO POLE	ASPHALT	ASPHALT	ASPHALT
+	VALVE	+	LIGHT STANDARD	LIGHT STANDARD	LIGHT STANDARD	SIDEWALK	SIDEWALK	SIDEWALK
+	BEND	+				CURB	CURB	CURB

LOCATION APPROVED UNDERGROUND STRUCTURES

SUPV. U/G STRUCTURES COMMITTEE	DATE

NOTE:
 LOCATION OF UNDERGROUND STRUCTURES AS SHOWN ARE BASED ON THE BEST INFORMATION AVAILABLE. BUT NO GUARANTEE IS GIVEN THAT THE GIVEN LOCATIONS ARE EXACT. CONFIRMATION OF EXISTENCE AND EXACT LOCATION OF ALL SERVICES MUST BE OBTAINED FROM THE INDIVIDUAL UTILITIES BEFORE PROCEEDING WITH CONSTRUCTION.

B.M. CITY OF WINNIPEG 38-069
 ELEV. 233.792m

NO.	ISSUED FOR TENDER	DATE	BY
00	ISSUED FOR TENDER	2017.03.28	KJM

TETRA TECH

DESIGNED BY	CHECKED BY
KJM	KJM

DRAWN BY	APPROVED BY
NL	GS

HOR. SCALE: 1 : 250
 VERTICAL: 1 : 50

RELEASED FOR CONSTRUCTION

CONSULTANT DRAWING NO. 1000120300-DWG-C0527

THE CITY OF WINNIPEG WATER AND WASTE DEPARTMENT

FERRY ROAD AND RIVERBEND COMBINED SEWER RELIEF WORKS CONTRACT SE-2

ASSINIBOINE AVENUE 38m EAST OF CAVELL DRIVE TO PARKSIDE DRIVE

CITY DRAWING NUMBER **LD-8167**
 SHEET **2** OF **10**
C0527