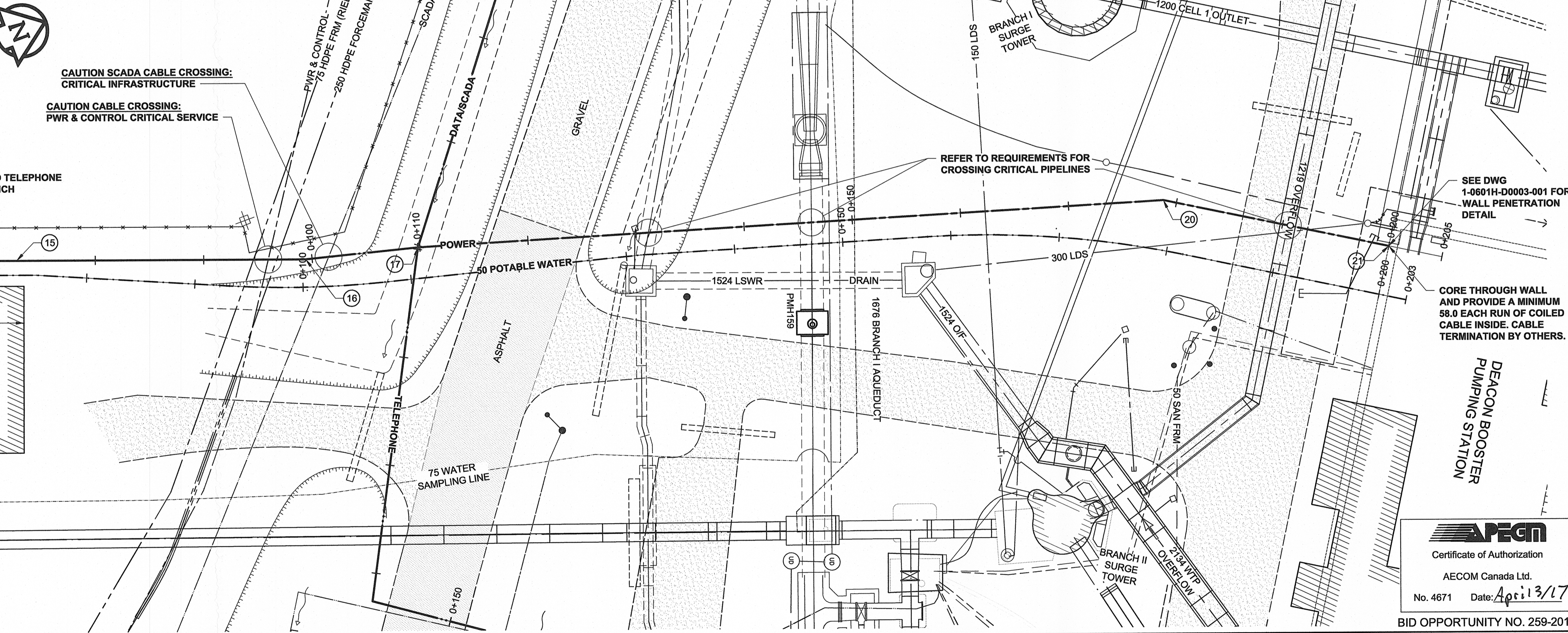


Point #	Northing	Eastng	Description
13	5523917.32	647688.38	SCADA/POWER/TELEPHONE PT 1
14	5523918.13	647666.17	SCADA/POWER/TELEPHONE PT 2
15	5523947.73	647677.06	SCADA/POWER/TELEPHONE PT 3
16	5523972.77	647686.27	SCADA/POWER/TELEPHONE PT 4
17	5523982.85	647688.88	SCADA/POWER/TELEPHONE PT 5
20	5524048.83	647708.89	POWER CONDUIT PT 6
21	5524066.85	647720.12	POWER CONDUIT PT 7

- NOTES:**
- SOFT DIG AND EXPOSE ALL UTILITIES AT CROSSING POINTS PRIOR TO TRENCHING. ADJUST TRENCH ELEVATIONS AS DIRECTED WHERE NEW PLANT ELEVATION CONFLICTS WITH EXISTING.
  - ALL TRENCHES IN OR WITHIN 1.0 OF ROADWAYS ARE TO BE BACKFILLED WITH CLASS 2 BACKFILL. BACKFILL IN LANDSCAPED AREAS IS TO BE CLASS 4 BACKFILL.
  - PROVIDED COMPACTED GRANULAR MATERIAL TO SUPPORT UTILITIES WHERE CROSSING BENEATH. RESTORE ALL SURFACES TO A CONDITION EQUAL TO OR BETTER THAN ORIGINAL CONDITIONS.



**METRIC**  
WHOLE NUMBERS INDICATE MILLIMETRES  
DECIMAL NUMBERS INDICATE METRES

EXISTING	LEGEND - PLAN	NEW	EXISTING	LEGEND - PLAN	NEW	EXISTING	LEGEND - PROFILE	NEW
150 WM	WATERMAIN	150 WM	CURB STOP	150 WM	WATERMAIN	150 WM	HYDRANT	150 WM
HYDRANT	REDUCER	COUPLING	ANODE	HYDRO	MTS	GAS	TESTHOLE	CULVERT
300 LDS	LAND DRAINAGE SEWER	300 LDS	WASTE WATER SEWER	250 WWS	MANHOLE	CATCH BASIN	CURB INLET	CULVERT
250 WWS	WASTE WATER SEWER	250 WWS	PIPE ABANDONMENTS	SURVEY BAR	EXISTING	LEGEND - PLAN	NEW	EXISTING
LEGEND - PLAN	NEW	EXISTING	LEGEND - PLAN	NEW	EXISTING	LEGEND - PROFILE	NEW	

**LOCATION APPROVED**  
UNDERGROUND STRUCTURES

SUPR. U/G STRUCTURES COMMITTEE DATE

**NOTE:**  
LOCATION OF UNDERGROUND STRUCTURES AS SHOWN ARE BASED ON THE BEST INFORMATION AVAILABLE. BUT NO GUARANTEE IS GIVEN THAT ALL EXISTING UTILITIES ARE SHOWN OR THAT THE GIVEN LOCATIONS ARE EXACT. CONFIRMATION OF EXISTENCE AND EXACT LOCATION OF ALL SERVICES MUST BE OBTAINED FROM THE INDIVIDUAL UTILITIES BEFORE PROCEEDING WITH CONSTRUCTION.

NO.	ISSUED FOR CONSTRUCTION	DATE	BY
0	ISSUED FOR CONSTRUCTION	17/03/29	KLC
NO.	REVISIONS	YYMMDD	BY

**AECOM**

DESIGNED BY: GSK  
DRAWN BY: Wjd  
HOR. SCALE: 1:250  
VERT. SCALE: 1:50

CHECKED BY: [Signature]  
APPROVED BY: [Signature]  
RELEASED FOR CONSTRUCTION: Apr 13/17  
DATE: [Signature]

PROFESSIONAL'S SEAL

PROVINCE OF MANITOBA  
**BRAUN**  
Member  
24493  
REGISTERED PROFESSIONAL ENGINEER

CONSULTANT DRAWING NO.  
60516883-SHT-30-0000-C-1003

**THE CITY OF WINNIPEG**  
WATER AND WASTE DEPARTMENT

**CIVIL MAINTENANCE/ AQUEDUCT STORAGE BUILDING**  
**INSTALLATION OF ELECTRICAL AND COMMUNICATION UTILITIES AND SEWER AND WATER SERVICING**

**POWER CABLE INSTALLATION**  
DEACON BOOSTER PUMPING STATION TO  
CIVIL MAINTENANCE/ AQUEDUCT STORAGE BUILDING

SHEET 3 OF 8  
CITY DRAWING NUMBER  
1-0601H-E0014-001  
REV 0

BID OPPORTUNITY NO. 259-2017

**AECOM**  
Certificate of Authorization  
AECOM Canada Ltd.  
No. 4671 Date: Apr 13/17  
BID OPPORTUNITY NO. 259-2017