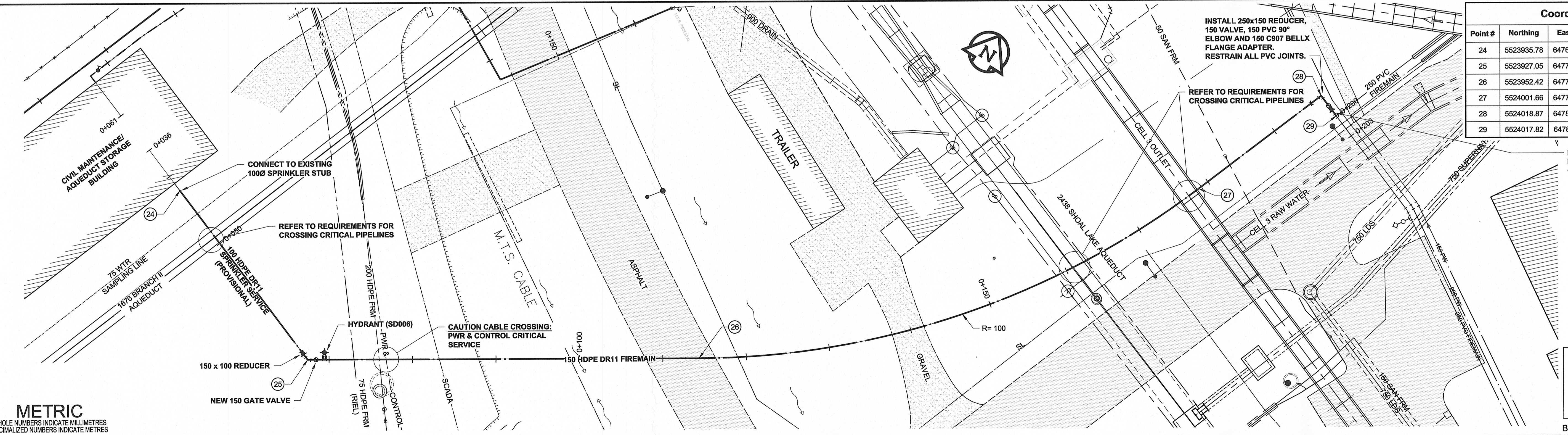


- NOTES:**
1. SOFT DIG AND EXPOSE ALL UTILITIES AT CROSSING POINTS PRIOR TO TRENCHING. ADJUST TRENCH ELEVATIONS AS DIRECTED WHERE NEW PLANT ELEVATION CONFLICTS WITH EXISTING.
 2. ALL TRENCHES IN OR WITHIN 1.0 OF ROADWAYS ARE TO BE BACKFILLED WITH CLASS 2 BACKFILL. BACKFILL IN LANDSCAPED AREAS IS TO BE CLASS 4 BACKFILL.
 3. PROVIDED COMPACTED GRANULAR MATERIAL TO SUPPORT UTILITIES WHERE CROSSING BENEATH. RESTORE ALL SURFACES TO A CONDITION EQUAL TO OR BETTER THAN ORIGINAL CONDITIONS.
 4. ALL PIPING TO BE INSTALLED WITH TRACER WIRE. SEE DETAIL DWG No. 1-0601H-D0003-001



Coordinate Table

Point #	Northing	Eastng	Description
24	5523935.78	647692.63	FIREMAIN CONNECTION PT
25	5523927.05	647716.43	FIREMAIN PT 2
26	5523952.42	647755.87	FIREMAIN PT 3
27	5524001.66	647795.49	FIREMAIN PT 4
28	5524018.87	647801.90	FIREMAIN PT 5
29	5524017.82	647804.71	FIREMAIN PT 6

METRIC
WHOLE NUMBERS INDICATE MILLIMETRES
DECIMALIZED NUMBERS INDICATE METRES

150 WM	150 WM	150 WM	150 WM	150 WM	150 WM	150 WM	150 WM
WATERMAIN	WATERMAIN	WATERMAIN	WATERMAIN	WATERMAIN	WATERMAIN	WATERMAIN	WATERMAIN
HYDRANT	HYDRANT	HYDRANT	HYDRANT	HYDRANT	HYDRANT	HYDRANT	HYDRANT
VALVE	VALVE	VALVE	VALVE	VALVE	VALVE	VALVE	VALVE
300 LDS	300 LDS	300 LDS	300 LDS	300 LDS	300 LDS	300 LDS	300 LDS
250 WWS	250 WWS	250 WWS	250 WWS	250 WWS	250 WWS	250 WWS	250 WWS
MANHOLE	MANHOLE	MANHOLE	MANHOLE	MANHOLE	MANHOLE	MANHOLE	MANHOLE
CATCH BASIN	CATCH BASIN	CATCH BASIN	CATCH BASIN	CATCH BASIN	CATCH BASIN	CATCH BASIN	CATCH BASIN
CURB INLET	CURB INLET	CURB INLET	CURB INLET	CURB INLET	CURB INLET	CURB INLET	CURB INLET
CULVERT	CULVERT	CULVERT	CULVERT	CULVERT	CULVERT	CULVERT	CULVERT
PIPE ABANDONMENTS	PIPE ABANDONMENTS	PIPE ABANDONMENTS	PIPE ABANDONMENTS	PIPE ABANDONMENTS	PIPE ABANDONMENTS	PIPE ABANDONMENTS	PIPE ABANDONMENTS
SURVEY BAR	SURVEY BAR	SURVEY BAR	SURVEY BAR	SURVEY BAR	SURVEY BAR	SURVEY BAR	SURVEY BAR
EXISTING	NEW	EXISTING	NEW	EXISTING	NEW	EXISTING	NEW

LOCATION APPROVED
UNDERGROUND STRUCTURES

SUPR. U/G STRUCTURES COMMITTEE DATE

NOTE:
LOCATION OF UNDERGROUND STRUCTURES AS SHOWN ARE BASED ON THE BEST INFORMATION AVAILABLE. BUT NO GUARANTEE IS GIVEN THAT ALL EXISTING UTILITIES ARE SHOWN OR THAT THE GIVEN LOCATIONS ARE EXACT. CONFIRMATION OF EXISTENCE AND EXACT LOCATION OF ALL SERVICES MUST BE OBTAINED FROM THE INDIVIDUAL UTILITIES BEFORE PROCEEDING WITH CONSTRUCTION.

AECOM

DESIGNED BY: GSK
CHECKED BY: PwI
DRAWN BY: WJd
APPROVED BY: [Signature]
HOR. SCALE: 1:250
VERT. SCALE: 1:50
ISSUED FOR CONSTRUCTION: 17/03/29 KLC
NO. REVISIONS: YYMM/DD BY: [Signature]

PROFESSIONAL'S SEAL
PROVINCE OF MANITOBA
BRAUN
Member
24453
REGISTERED PROFESSIONAL ENGINEER
CONSULTANT DRAWING NO.
60516883-SHT-30-0000-C-1005

THE CITY OF WINNIPEG
WATER AND WASTE DEPARTMENT

CIVIL MAINTENANCE/ AQUEDUCT STORAGE BUILDING
INSTALLATION OF ELECTRICAL AND COMMUNICATION UTILITIES AND SEWER AND WATER SERVICING

FIREMAIN

FROM THE EXISTING 250 FIREMAIN TO CIVIL MAINTENANCE/ AQUEDUCT STORAGE BUILDING

SHEET 5 OF 8
CITY DRAWING NUMBER: 1-0601H-C0020-001
REV 0

AECOM
Certificate of Authorization
AECOM Canada Ltd.
No. 4671 Date: April 2017
BID OPPORTUNITY NO. 259-2017