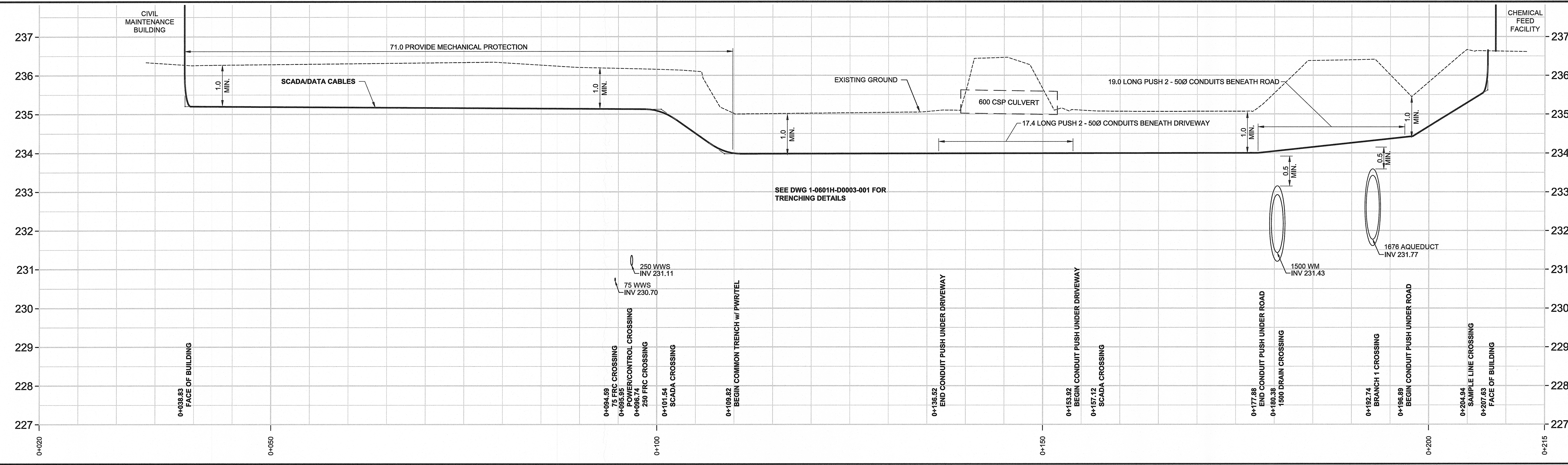


D SIZE 22" x 34" (559mm x 864mm)

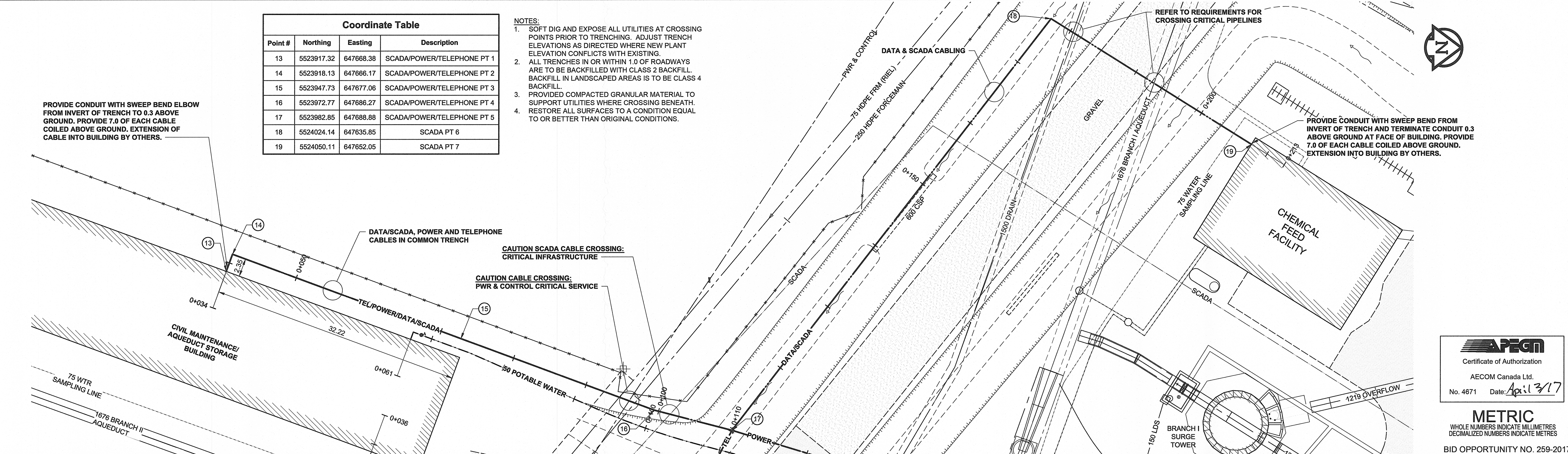
PLOT: 3/29/2017 1:53:48 PM

AECOM REVIEW DRAFT CHK 6/2/17  
AECOM FILE NAME: 60516883-SHT-30-0000-C-1002.dwg Saved By: denoudshw



Point #	Northing	Easting	Description
13	5523917.32	647668.38	SCADA/POWER/TELEPHONE PT 1
14	5523918.13	647666.17	SCADA/POWER/TELEPHONE PT 2
15	5523947.73	647677.06	SCADA/POWER/TELEPHONE PT 3
16	5523972.77	647686.27	SCADA/POWER/TELEPHONE PT 4
17	5523982.85	647688.88	SCADA/POWER/TELEPHONE PT 5
18	5524024.14	647635.85	SCADA PT 6
19	5524050.11	647652.05	SCADA PT 7

- NOTES:**
- SOFT DIG AND EXPOSE ALL UTILITIES AT CROSSING POINTS PRIOR TO TRENCHING. ADJUST TRENCH ELEVATIONS AS DIRECTED WHERE NEW PLANT ELEVATION CONFLICTS WITH EXISTING.
  - ALL TRENCHES IN OR WITHIN 1.0 OF ROADWAYS ARE TO BE BACKFILLED WITH CLASS 2 BACKFILL. BACKFILL IN LANDSCAPED AREAS IS TO BE CLASS 4 BACKFILL.
  - PROVIDED COMPACTED GRANULAR MATERIAL TO SUPPORT UTILITIES WHERE CROSSING BENEATH. RESTORE ALL SURFACES TO A CONDITION EQUAL TO OR BETTER THAN ORIGINAL CONDITIONS.



150 WM	WATERMAIN	150 WM	150 WM	CURB STOP	150 WM	WATERMAIN	150 WM	LOCATION APPROVED
	HYDRANT					HYDRANT		UNDERGROUND STRUCTURES
	LAND DRAINAGE SEWER					LAND DRAINAGE SEWER		SUPR. U/G STRUCTURES DATE COMMITTEE
	WASTE WATER SEWER					WASTE WATER SEWER		NOTE:
	CULVERT					PAVEMENT CROWN		LOCATION OF UNDERGROUND STRUCTURES AS SHOWN ARE BASED ON THE BEST INFORMATION AVAILABLE. BUT NO GUARANTEE IS GIVEN THAT ALL EXISTING UTILITIES ARE SHOWN OR THAT THE GIVEN LOCATIONS ARE EXACT. CONFIRMATION OF EXISTENCE AND EXACT LOCATION OF ALL SERVICES MUST BE OBTAINED FROM THE INDIVIDUAL UTILITIES BEFORE PROCEEDING WITH CONSTRUCTION.
	EXISTING					EXISTING		

**LOCATION APPROVED**  
UNDERGROUND STRUCTURES

SUPR. U/G STRUCTURES DATE COMMITTEE

NOTE:  
LOCATION OF UNDERGROUND STRUCTURES AS SHOWN ARE BASED ON THE BEST INFORMATION AVAILABLE. BUT NO GUARANTEE IS GIVEN THAT ALL EXISTING UTILITIES ARE SHOWN OR THAT THE GIVEN LOCATIONS ARE EXACT. CONFIRMATION OF EXISTENCE AND EXACT LOCATION OF ALL SERVICES MUST BE OBTAINED FROM THE INDIVIDUAL UTILITIES BEFORE PROCEEDING WITH CONSTRUCTION.

NO.	ISSUED FOR CONSTRUCTION	17/03/29	WJd
0	ISSUED FOR CONSTRUCTION	17/03/29	WJd
	REVISIONS	YYMMDD	BY

**AECOM**

DESIGNED BY: GSK  
CHECKED BY: Pw  
DRAWN BY: WJd  
APPROVED BY: SS  
RELEASED FOR CONSTRUCTION: April 3/2017  
DATE: 17/03/29

PROFESSIONAL'S SEAL  
A.D. BRAUN  
Member  
24458  
REGISTERED PROFESSIONAL ENGINEER

**THE CITY OF WINNIPEG**  
WATER AND WASTE DEPARTMENT

**CIVIL MAINTENANCE/AQUEDUCT STORAGE BUILDING**  
INSTALLATION OF ELECTRICAL AND COMMUNICATION UTILITIES AND SEWER AND WATER SERVICING

SCADA AND DATA CABLE INSTALLATION  
CHEMICAL FEED FACILITY TO THE CIVIL MAINTENANCE/AQUEDUCT STORAGE BUILDING

SHEET 2 OF 8  
CITY DRAWING NUMBER: 1-0601H-A0243-001  
REV 0

**AECOM**  
Certificate of Authorization  
AECOM Canada Ltd.  
No. 4671 Date: April 3/17

**METRIC**  
WHOLE NUMBERS INDICATE MILLIMETRES  
DECIMALIZED NUMBERS INDICATE METRES  
BID OPPORTUNITY NO. 259-2017