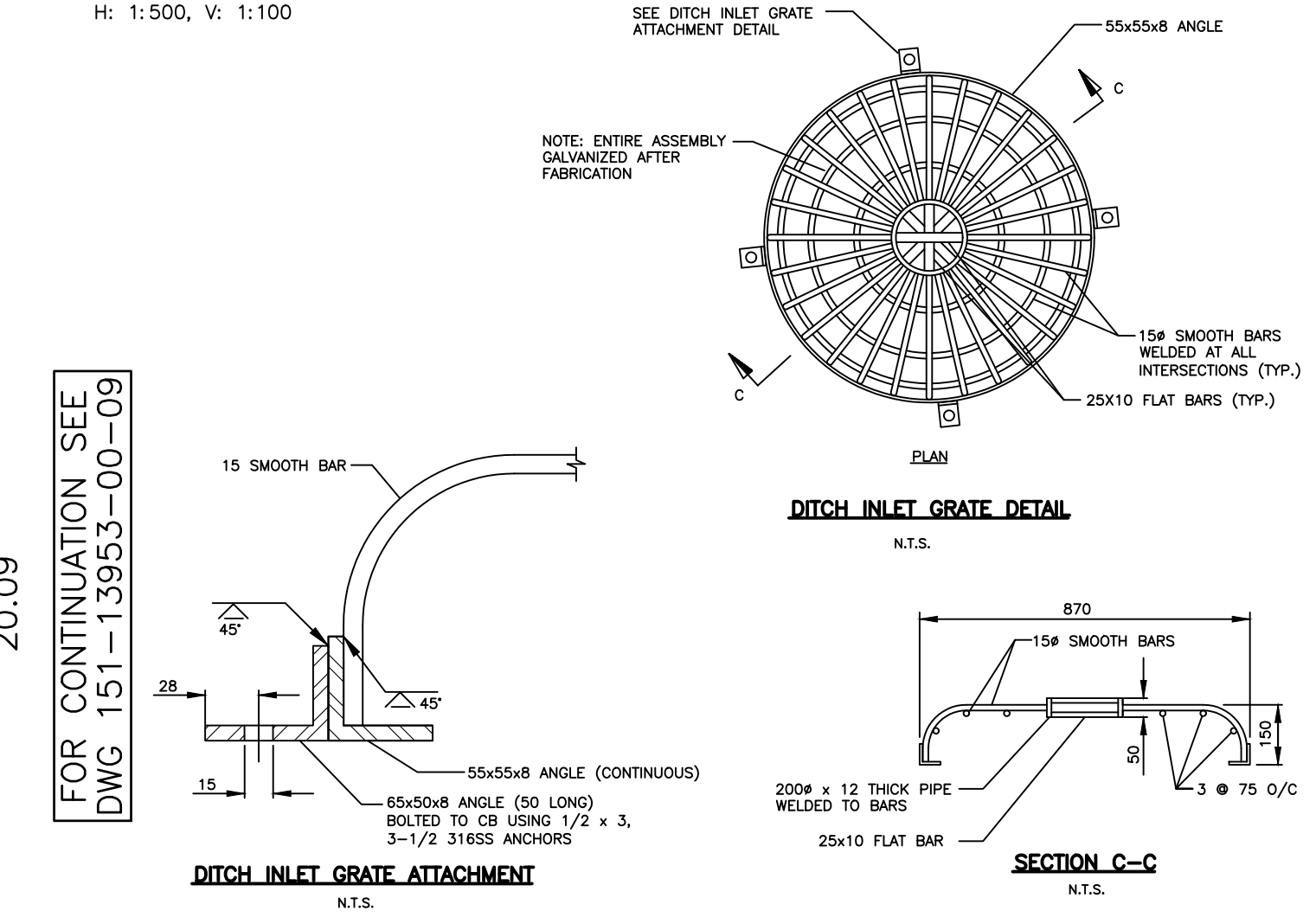
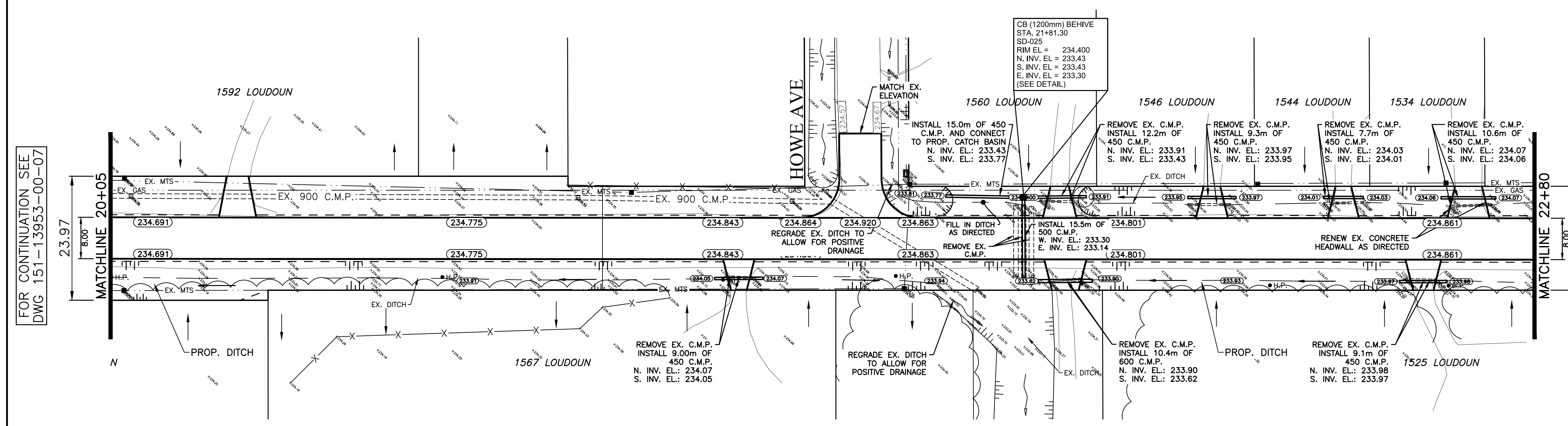
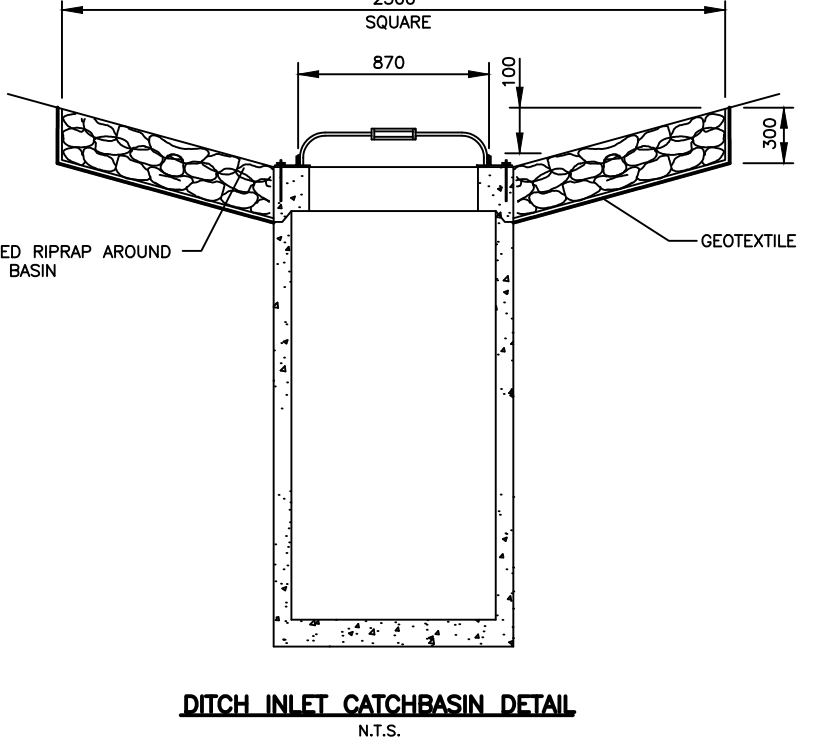
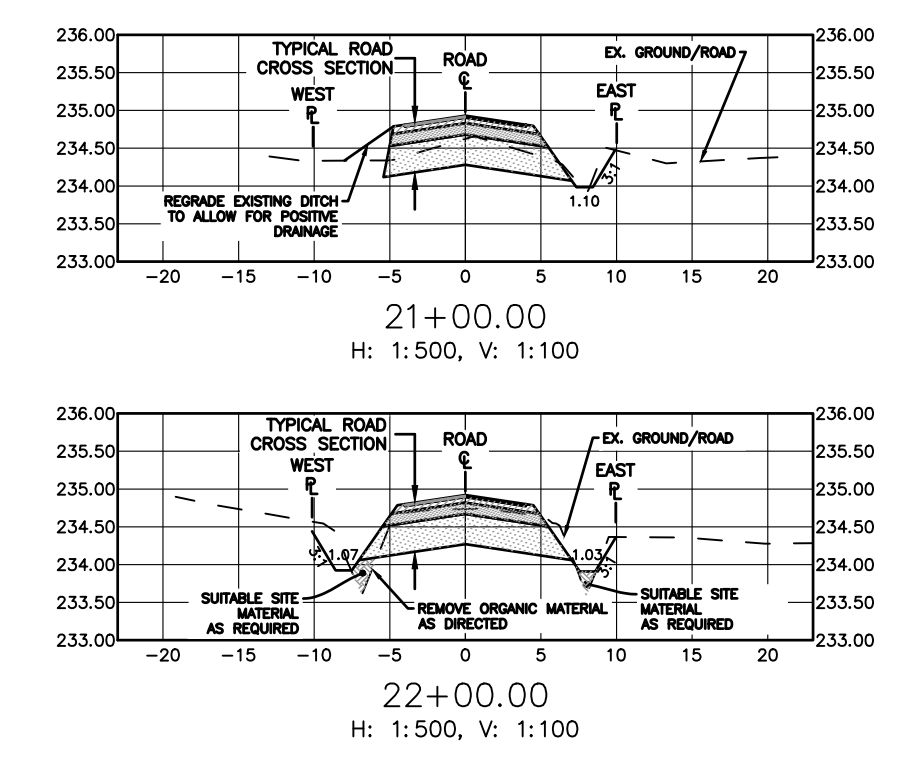
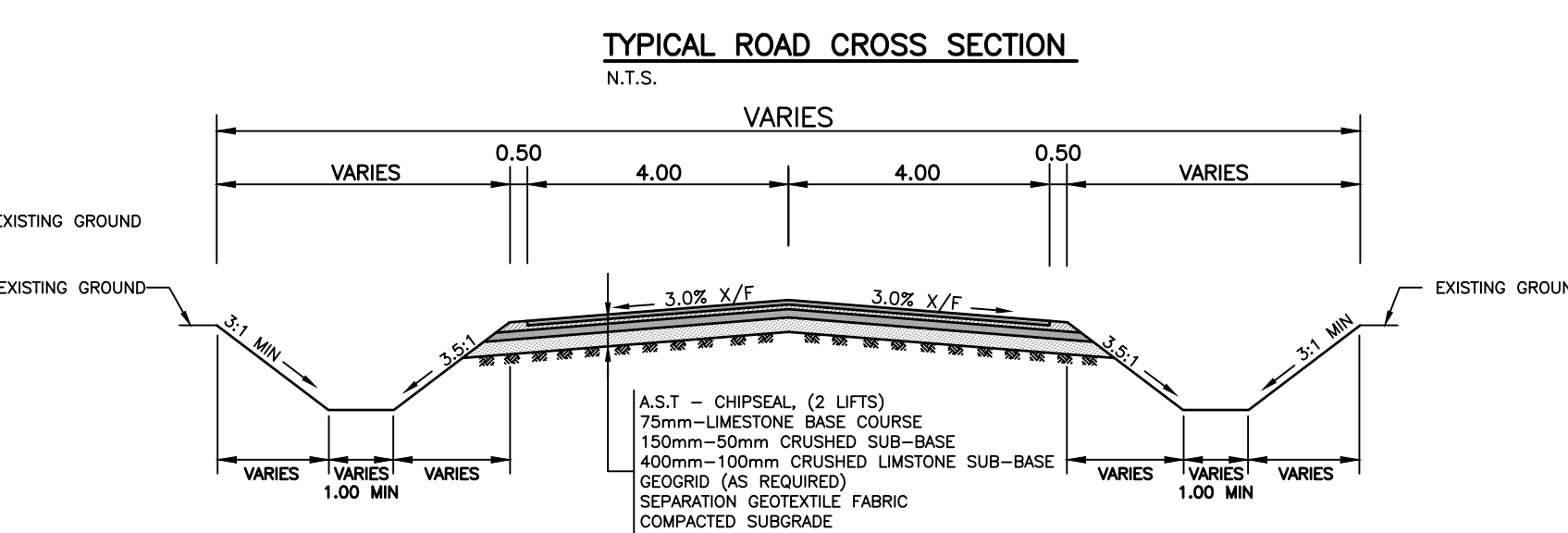
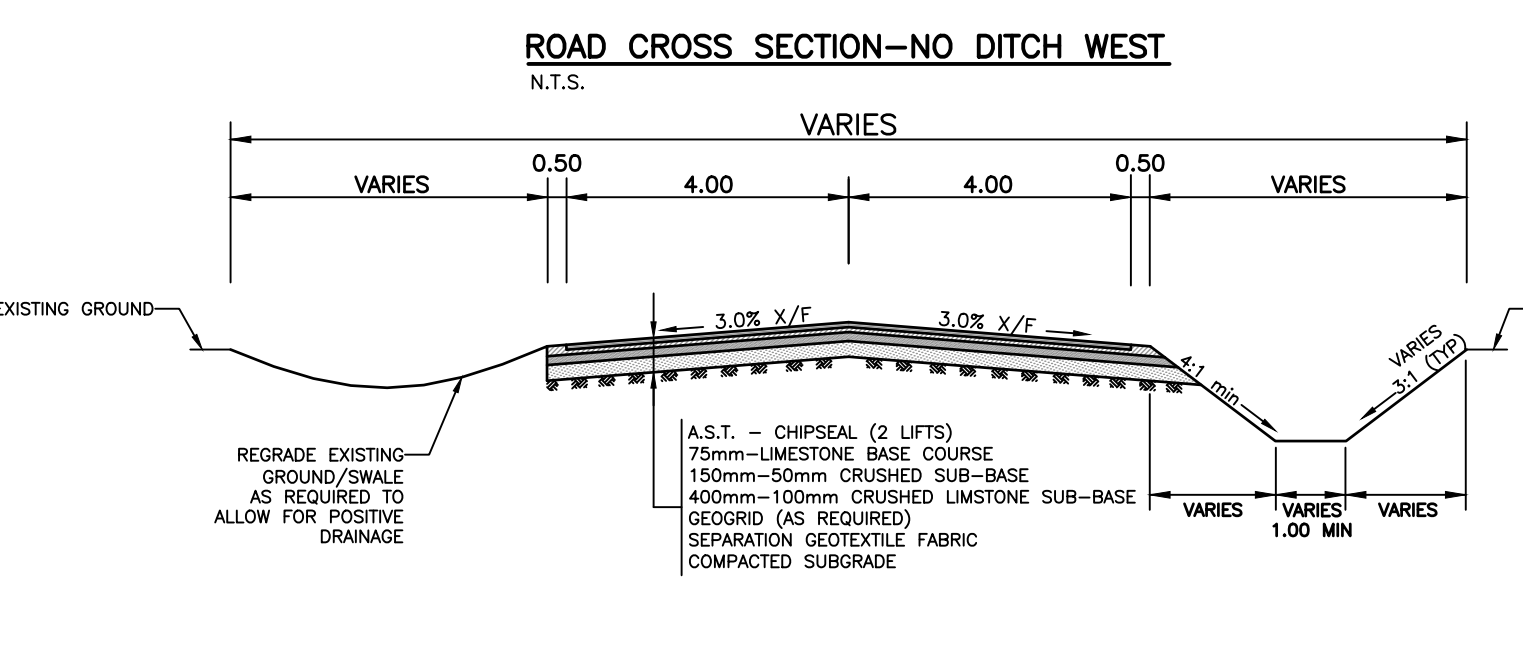


- GENERAL NOTES**
1. ALL WORK TO CONFORM TO THE LATEST CITY OF WINNIPEG CONSTRUCTION SPECIFICATIONS
 2. CLEARING AND GRUBBING LIMITS AS DIRECTED BY CONTRACT ADMINISTRATOR
 3. ALL MANHOLES, VALVES AND OTHER APPURTENANCES TO BE ADJUSTED AS DIRECTED BY CONTRACT ADMINISTRATOR
 4. ALL DITCHES TO BE REGRADED AS DIRECTED BY CONTRACT ADMINISTRATOR
 5. REMOVAL OF ORGANIC MATERIAL AS DIRECTED BY CONTRACT ADMINISTRATOR
 6. ALL PRIVATE APPROACHES TO BE REGRADED AND RESTORED AS DIRECTED BY CONTRACT ADMINISTRATOR
 7. PREVENT DAMAGE TO EXIST TREES OUTSIDE OF WORK LIMITS
 8. LANDSCAPING LIMITS AS DIRECTED BY CONTRACT ADMINISTRATOR



WATERMAIN	M.T.S.	WATERMAIN
HYDRANT	TRAFFIC SIGNAL	VALVE
VALVE	CONCRETE/ASPHALT	LAND DRAINAGE SEWER
CURB STOP	SIDEWALK	WASTE WATER SEWER
WASTE WATER SEWER	CURB RAMP	CENTERLINE
LAND DRAINAGE SEWER	PROPERTY LINE	SOUTH & EAST GUTTER
C.B. LEAD	ELEVATIONS	NORTH & WEST GUTTER
MANHOLE	TEST HOLE LOCATION	S. & E. PAD/GARG.
CATCH BASIN	CULVERT	N. & W. PAD/GARG.
GAS	TREES	
HYDRO		
EXISTING	LEGEND - PLAN	PROPOSED
EXISTING	LEGEND - PROFILE	PROPOSED

LOCATION APPROVED UNDERGROUND STRUCTURES

SUPV. U/G STRUCTURES DATE COMMITTEE

NOTE: LOCATION OF UNDERGROUND STRUCTURES AS SHOWN ARE BASED ON THE BEST INFORMATION AVAILABLE BUT NO GUARANTEE IS GIVEN THAT ALL EXISTING UTILITIES ARE SHOWN OR THAT THE GIVEN LOCATIONS ARE EXACT. CONFIRMATION OF EXISTENCE AND EXACT LOCATION OF ALL SERVICES MUST BE OBTAINED FROM THE INDIVIDUAL UTILITIES BEFORE PROCEEDING WITH CONSTRUCTION.

NO.	REVISIONS	DATE	BY
01	ISSUED FOR TENDER	17/09/04	R.H.
00	COW REVIEW SUBMISSION	17/02/03	R.H.

WSP 1600 BUFFALO PLACE WINNIPEG, MB, R3T 6B8 PHONE: 204-477-6650 FAX: 204-474-2864 WWW.WSPGROUP.COM

DESIGNED BY: R.H. CHECKED BY: S.M.
 DRAWN BY: R.H. APPROVED BY: I.McK.
 HOR. SCALE: 1:500
 VERT. SCALE: 1:25
 DATE: FEBRUARY 2016

APEGN Certificate of Authorization WSP Canada Inc. No. 5750 Date Month DD, YYYY

Description of property limits, and existing and/or proposed features relative to these limits as shown on this drawing do not represent a Legal Survey. WSP makes no representation or guarantee that the property limit information is accurate. WSP accepts no responsibility for damages, if any, suffered by any third party as a result of decisions made or actions based on this drawing.

THE CITY OF WINNIPEG PUBLIC WORKS DEPARTMENT

2016 GRANULAR RENEWALS LOUDOUN ROAD

FROM MATCHLINE AT STA. 20+05 TO MATCHLINE AT STA. 22+80 CHIPSEAL PAVEMENT

CITY DRAWING NO. SHEET 08 OF 13 221-2017