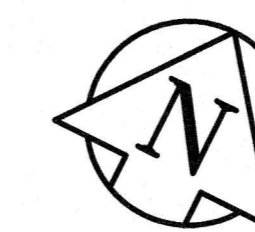
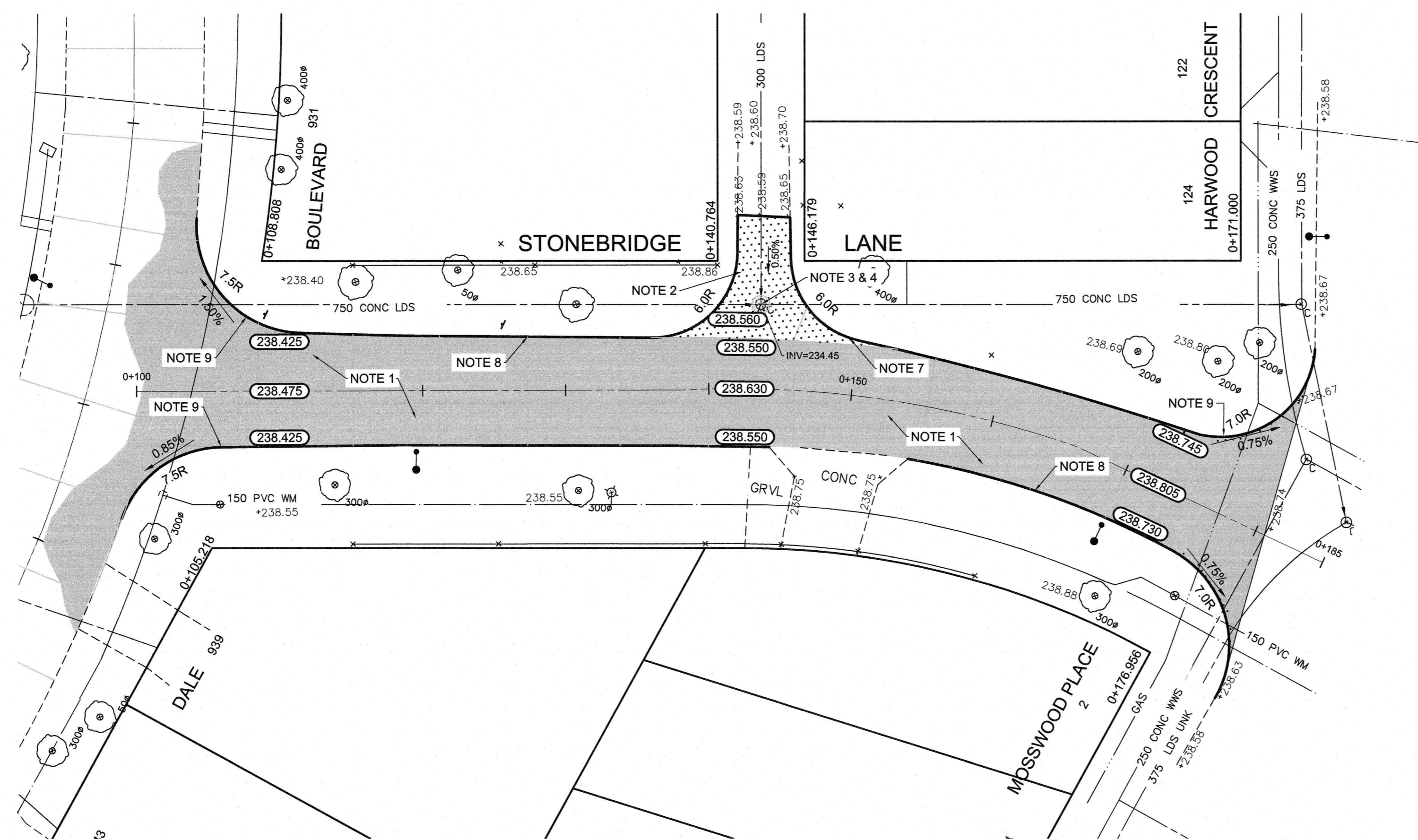


REFERENCE NOTES

- A. PAVEMENT DIMENSIONS ARE TO BACK OF CURB
- B. BASELINE IS CENTRE LINE RIGHT-OF-WAY
- C. PROPERTY LINES OBTAINED FROM CITY OF WINNIPEG L.B.I.S., AND NO SCALE FACTOR WAS APPLIED
- D. REFER TO AECOM FIELD BOOK NO. 4980

CONSTRUCTION NOTES

1. CONSTRUCT NEW ASPHALTIC PAVEMENT TYPE1A (85 mm AVG. THICKNESS)
2. REMOVE EXISTING CONCRETE PAVEMENT AND CONSTRUCT NEW 150mm REINFORCED CONCRETE PAVEMENT
3. ADJUST EXISTING MANHOLE/CATCH BASIN TO GRADE
4. REMOVE EXISTING FRAME AND COVER AND INSTALL NEW FRAME AND SOLID COVER (AP-005 AND AP-004)
5. INSTALL NEW CAST IRON RISER RING
6. ADJUST EXISTING WATER VALVE TO GRADE
7. CONSTRUCT NEW MODIFIED BARRIER CURB (150mm HT. INTEGRAL)
8. PLANE EXISTING LIP CURB (75mm HT.) AND CONSTRUCT NEW CONCRETE BARRIER CURB (100mm REVEAL DOWELLED)
9. PLANE EXISTING LIP CURB (75mm HT.) AND CONSTRUCT NEW MODIFIED BARRIER CURB (150mm REVEAL DOWELLED)



APEGM
 Certificate of Authorization
 AECOM Canada Ltd.
 No. 4671 Date: *Apr 6/17*

METRIC
 WHOLE NUMBERS INDICATE MILLIMETRES
 DECIMALIZED NUMBERS INDICATE METRES

150 mm W.M.	WATERMAIN	150 mm W.M.	HYDRO	— x —	PROFILE
300mm L.D.S.	LAND DRAINAGE SEWER	300mm L.D.S.	M.T.S.	— □ —	NORTH GUTTER
250mm W.W.S.	WASTEWATER SEWER	250mm W.W.S.	CONCRETE	— ○ —	SOUTH GUTTER
○	MANHOLE	●	ASPHALT	— ◆ —	N/W PROPERTY LINE
□	CATCH BASIN	■	PROPERTY LINE	— ○ —	S/E PROPERTY LINE
▽	CATCH PIT	⊕	SURVEY BAR		
—	JUNCTIONS	⊕	ELEVATION	(35.750)	
—	CULVERT	⊕	TREE		
—	GAS	⊕	SIDEWALK RAMP		
—	LEGEND - PLAN	⊕	CONCRETE SIDEWALK		
—	PROPOSED	⊕	FENCE		
—	EXISTING	⊕	LEGEND - PLAN		
—	PROPOSED	⊕	LEGEND - PROFILE		
—	EXISTING	⊕	PROPOSED		

LOCATION APPROVED UNDERGROUND STRUCTURES

SUPV. U/G STRUCTURES COMMITTEE DATE

NOTE:
 LOCATION OF UNDERGROUND STRUCTURES AS SHOWN ARE BASED ON THE BEST INFORMATION AVAILABLE. BUT NO GUARANTEE IS GIVEN THAT ALL EXISTING UTILITIES ARE SHOWN OR THAT THE GIVEN LOCATIONS ARE EXACT. CONFIRMATION OF EXISTENCE AND EXACT LOCATION OF ALL SERVICES MUST BE OBTAINED FROM THE INDIVIDUAL UTILITIES BEFORE PROCEEDING WITH CONSTRUCTION.

B.M. 48 - 052 93R551 - S.E. Cor. Dale Blvd. & Everwood Cres., Tilt. on top of 0.05m dia. x 1.22 m S. of S.L. of Everwood Cres.

NO.	REVISIONS	DATE	BY
0	ISSUED FOR TENDER	04/06/2017	BC
A	ISSUED FOR REVIEW	02/12/2017	BC

AECOM

DESIGNED BY	BC	CHECKED BY	KWR
DRAWN BY	JC/BC	APPROVED BY	
HOR. SCALE:	1:250	RELEASED FOR CONSTRUCTION BY:	
VERTICAL:	1:10	DATE	<i>Apr 6/17</i>

ENGINEER'S SEAL

PROVINCE OF MANITOBA
 K.W. RAE
 REGISTERED PROFESSIONAL ENGINEER

CONSULTANT DRAWING NO. CT-07

THE CITY OF WINNIPEG
 PUBLIC WORKS DEPARTMENT
 ENGINEERING DIVISION

2017 LOCAL STREET RENEWAL PROGRAM

STONEBRIDGE LANE - DALE BLVD TO MOSSWOOD PLACE
 PAVEMENT REHABILITATION
 STATION 0+100 TO STATION 0+185

CITY DRAWING NUMBER
 SHEET 07 OF 07