

- REFERENCE NOTES**
- PAVEMENT DIMENSIONS ARE TO BACK OF CURB
  - BASELINE IS CENTRE LINE RIGHT-OF-WAY
  - PROPERTY LINES OBTAINED FROM CITY OF WINNIPEG L.B.I.S., AND NO SCALE FACTOR WAS APPLIED
  - REFER TO AECOM FIELD BOOK NO. 4980
- CONSTRUCTION NOTES**
- PLACE NEW ASPHALTIC PAVEMENT TYPE 1A (AVG. THICKNESS 85mm)
  - REMOVE EXISTING ASPHALT AND CONSTRUCT NEW ASPHALTIC OVERLAY TYPE 1A
  - REMOVE EXISTING CONCRETE/ASPHALT PAVEMENT AND CONSTRUCT NEW 200mm REINFORCED CONCRETE PAVEMENT
  - RENEW EXISTING BARRIER CURB (100mm REVEAL, DOWELLED)
  - REMOVE EXISTING LIP CURB AND CONSTRUCT NEW CONCRETE MODIFIED BARRIER CURB (150mm REVEAL HT. INTEGRAL)
  - CONSTRUCT CURB RAMP (10mm REVEAL HT. INTEGRAL)
  - ADJUST EXISTING MANHOLE/CATCH BASIN TO GRADE
  - REMOVE EXISTING FRAME AND COVER AND INSTALL NEW BARRIER FRAME AND COVER (AP004-AP006)
  - INSTALL NEW CAST IRON RISER RING
  - REMOVE EXISTING FRAME AND COVER AND INSTALL NEW FRAME AND SOLID COVER (AP008-AP009)
  - ADJUST EXISTING WATER VALVE TO GRADE
  - REMOVE AND REINSTALL EXISTING PAVING STONES AND CONSTRUCT 150mm HT. CONCRETE BARRIER CURB EDGING
  - CONSTRUCT NEW 100mm CONCRETE SIDEWALK
  - CONSTRUCT NEW BARRIER CURB (100mm REVEAL HT. SEPERATE)
  - RENEW EXISTING 100mm CONCRETE SIDEWALK
  - REMOVE AND REINSTALL EXISTING PATIO BLOCKS
  - RELOCATE EXISTING STREET LIGHT
  - INSTALL NEW DETECTABLE WARNING SURFACE TILES



**METRIC**  
WHOLE NUMBERS INDICATE MILLIMETRES  
DECIMALIZED NUMBERS INDICATE METRES

150 mm W.M.	WATERMAIN	150 mm W.M.	HYDRO	— X —	— C —	— C —	— C —
300 mm L.D.S.	HYDRANT VALVE	300mm L.D.S.	M.T.S.	— X —	— C —	— C —	— C —
250mm W.W.S.	LAND DRAINAGE SEWER	250mm W.W.S.	CONCRETE	— X —	— C —	— C —	— C —
	WASTEWATER SEWER		ASPHALT	— X —	— C —	— C —	— C —
	MANHOLE		PROPERTY LINE	— X —	— C —	— C —	— C —
	CATCH BASIN		SURVEY BAR	— X —	— C —	— C —	— C —
	CATCH PIT		ELEVATION	— X —	— C —	— C —	— C —
	JUNCTIONS		TREE	— X —	— C —	— C —	— C —
	CULVERT		SIDEWALK RAMP	— X —	— C —	— C —	— C —
	GAS		CONCRETE SIDEWALK	— X —	— C —	— C —	— C —
			FENCE	— X —	— C —	— C —	— C —
EXISTING	LEGEND - PLAN	PROPOSED	EXISTING	LEGEND - PLAN	PROPOSED	EXISTING	LEGEND - PROFILE
							PROPOSED

**LOCATION APPROVED UNDERGROUND STRUCTURES**

SUPV. U/G STRUCTURES COMMITTEE DATE

**NOTE:**  
LOCATION OF UNDERGROUND STRUCTURES AS SHOWN ARE BASED ON THE BEST INFORMATION AVAILABLE. BUT NO GUARANTEE IS GIVEN THAT ALL EXISTING UTILITIES ARE SHOWN OR THAT THE GIVEN LOCATIONS ARE EXACT. CONFIRMATION OF EXISTENCE AND EXACT LOCATION OF ALL SERVICES MUST BE OBTAINED FROM THE INDIVIDUAL UTILITIES BEFORE PROCEEDING WITH CONSTRUCTION.

B.M. 48 - 052 83R551 - S.E. Cor. Dale Blvd. & Everwood Cres., Tbl. on top of 0.05m dia. x 1.22 m S. of S.L. of Everwood Cres.

0	ISSUED FOR TENDER	04/08/2017	BC
B	ISSUED FOR SIDEWALK REVIEW	02/27/2017	BC
A	ISSUED FOR REVIEW	02/12/2017	BC
NO.	REVISIONS	DATE	BY

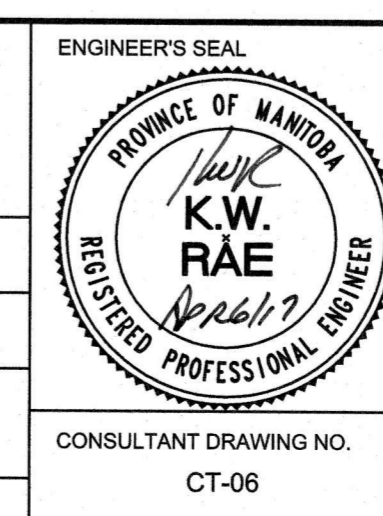
**AECOM**

DESIGNED BY: BC  
CHECKED BY: KWR

DRAWN BY: JC/BC  
APPROVED BY:

HOR. SCALE: 1:250  
VERTICAL: 1:10

RELEASED FOR CONSTRUCTION BY:  
DATE: APR 6/17



**THE CITY OF WINNIPEG**  
PUBLIC WORKS DEPARTMENT  
ENGINEERING DIVISION

2017 LOCAL STREET RENEWAL PROGRAM

DALE BLVD - SHEPTON TO RANNOCK  
PAVEMENT REHABILITATION  
STATION 0+350 TO RANNOCK AVENUE

CITY DRAWING NUMBER  
SHEET 06 OF 07