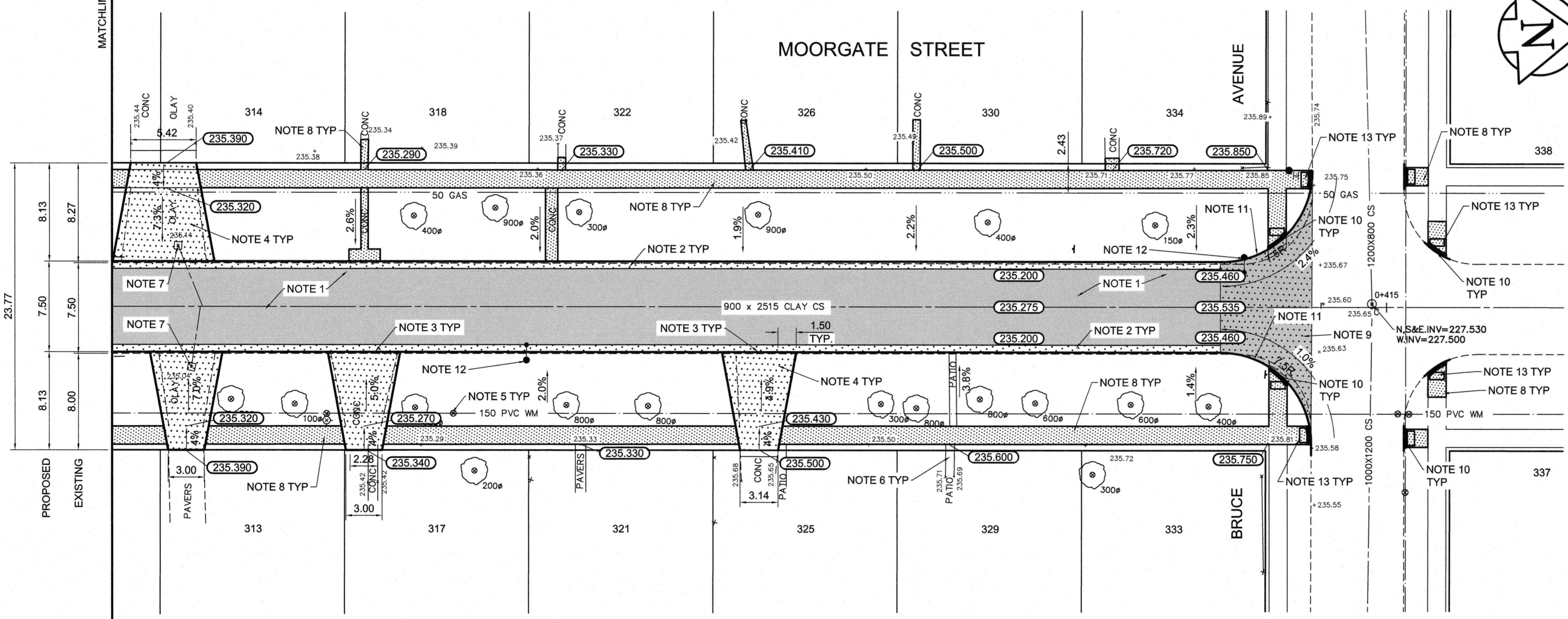


TYPICAL CROSS SECTION

- REFERENCE NOTES**
- A. PAVEMENT DIMENSIONS ARE TO BACK OF CURB
 - B. BASELINE IS CENTRE LINE RIGHT-OF-WAY
 - C. PROPERTY LINES OBTAINED FROM CITY OF WINNIPEG L.B.I.S., AND NO SCALE FACTOR WAS APPLIED
 - D. REFER TO AECOM FIELD BOOK NO. 4983

- CONSTRUCTION NOTES**
1. REMOVE EXISTING CONCRETE AND ASPHALTIC PAVEMENT AND CONSTRUCT NEW ASPHALTIC PAVEMENT TYPE 1A (100mm)
 2. CONSTRUCT NEW BARRIER CURB AND GUTTER (600mm WIDTH, 180mm HT.)
 3. CONSTRUCT NEW LIP CURB AND GUTTER (40mm HT, INTEGRAL)
 4. REMOVE EXISTING CONCRETE PAVEMENT AND CONSTRUCT NEW 150mm REINFORCED CONCRETE PAVEMENT
 5. ADJUST EXISTING WATER VALVE TO GRADE
 6. REMOVE AND REINSTALL EXISTING PATIO BLOCKS TO GRADE
 7. REMOVE EXISTING CATCHBASIN AND ABANDON LEAD
 8. RENEW EXISTING 100mm SIDEWALK
 9. REMOVE EXISTING CONCRETE PAVEMENT AND CONSTRUCT NEW 150mm REINFORCED CONCRETE PAVEMENT c/w NEW ASPHALTIC PAVEMENT TYPE 1A (65mm)
 10. CONSTRUCT NEW CURB RAMP (10mm REV. HT, INTEGRAL)
 11. CONSTRUCT NEW MODIFIED BARRIER CURB (180mm HT, INTEGRAL)
 12. REMOVE EXISTING STREET LIGHT
 13. INSTALL NEW DETECTABLE WARNING SURFACE TILE



METRIC
WHOLE NUMBERS INDICATE MILLIMETRES
DECIMALIZED NUMBERS INDICATE METRES

EXISTING	LEGEND - PLAN	PROPOSED	EXISTING	LEGEND - PLAN	PROPOSED	EXISTING	LEGEND - PROFILE	PROPOSED
150 mm W.M.	WATERMAIN	150 mm W.M.	---	HYDRO	---	---	C PROFILE	---
Hydrant	HYDRANT	Hydrant	---	M.T.S.	---	---	WEST GUTTER	---
Valve	VALVE	Valve	---	CONCRETE	---	---	EAST GUTTER	---
300mm L.D.S.	LAND DRAINAGE SEWER	300mm L.D.S.	---	ASPHALT	---	---	N/W PROPERTY LINE	---
250mm W.W.S.	WASTEWATER SEWER	250mm W.W.S.	---	PROPERTY LINE	---	---	S/E PROPERTY LINE	---
Manhole	MANHOLE	Manhole	---	SURVEY BAR	---	---		
Catch Basin	CATCH BASIN	Catch Basin	---	ELEVATION	(35.750)	---		
Catch Pit	CATCH PIT	Catch Pit	---	TREE	---	---		
Junctions	JUNCTIONS	Junctions	---	SIDEWALK RAMP	---	---		
Culvert	CULVERT	Culvert	---	CONCRETE SIDEWALK	---	---		
Gas	GAS	Gas	---	FENCE	---	---		

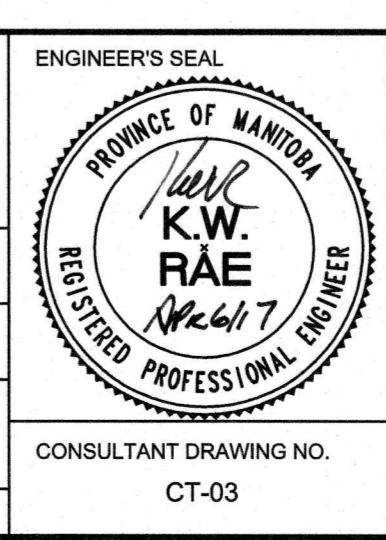
LOCATION APPROVED UNDERGROUND STRUCTURES

SUPV. U/G STRUCTURES COMMITTEE DATE

NOTE:
LOCATION OF UNDERGROUND STRUCTURES AS SHOWN ARE BASED ON THE BEST INFORMATION AVAILABLE. BUT NO GUARANTEE IS GIVEN THAT ALL EXISTING UTILITIES ARE SHOWN OR THAT THE GIVEN LOCATIONS ARE EXACT. CONFIRMATION OF EXISTENCE AND EXACT LOCATION OF ALL SERVICES MUST BE OBTAINED FROM THE INDIVIDUAL UTILITIES BEFORE PROCEEDING WITH CONSTRUCTION.

B.M. 38 - 039 S.W. Corner Sharpe Blvd. & Bruce Ave., Tblt. in N. Conc. foundation No. 336 Sharpe Blvd., 3.3m W. & 0.3m below stucco of S.W. Cor. of dwelling.

NO.	REVISIONS	DATE	BY
0	ISSUED FOR TENDER	04/06/2017	BC
A	ISSUED FOR REVIEW	04/04/2017	BC



THE CITY OF WINNIPEG
PUBLIC WORKS DEPARTMENT
ENGINEERING DIVISION

2017 LOCAL STREET RENEWAL PROGRAM

MOORGATE STREET-BRUCE AVENUE TO LODGE AVENUE
ASPHALT RECONSTRUCTION
STATION 0+310 TO BRUCE AVENUE

CITY DRAWING NUMBER
SHEET 03 OF 07

CONSULTANT DRAWING NO. CT-03

AECOM

DESIGNED BY: BC
CHECKED BY: KWR
DRAWN BY: JC/BC
APPROVED BY:
HOR. SCALE: 1:250
VERTICAL: 1:10
RELEASED FOR CONSTRUCTION BY:
DATE: APR 6, 2017