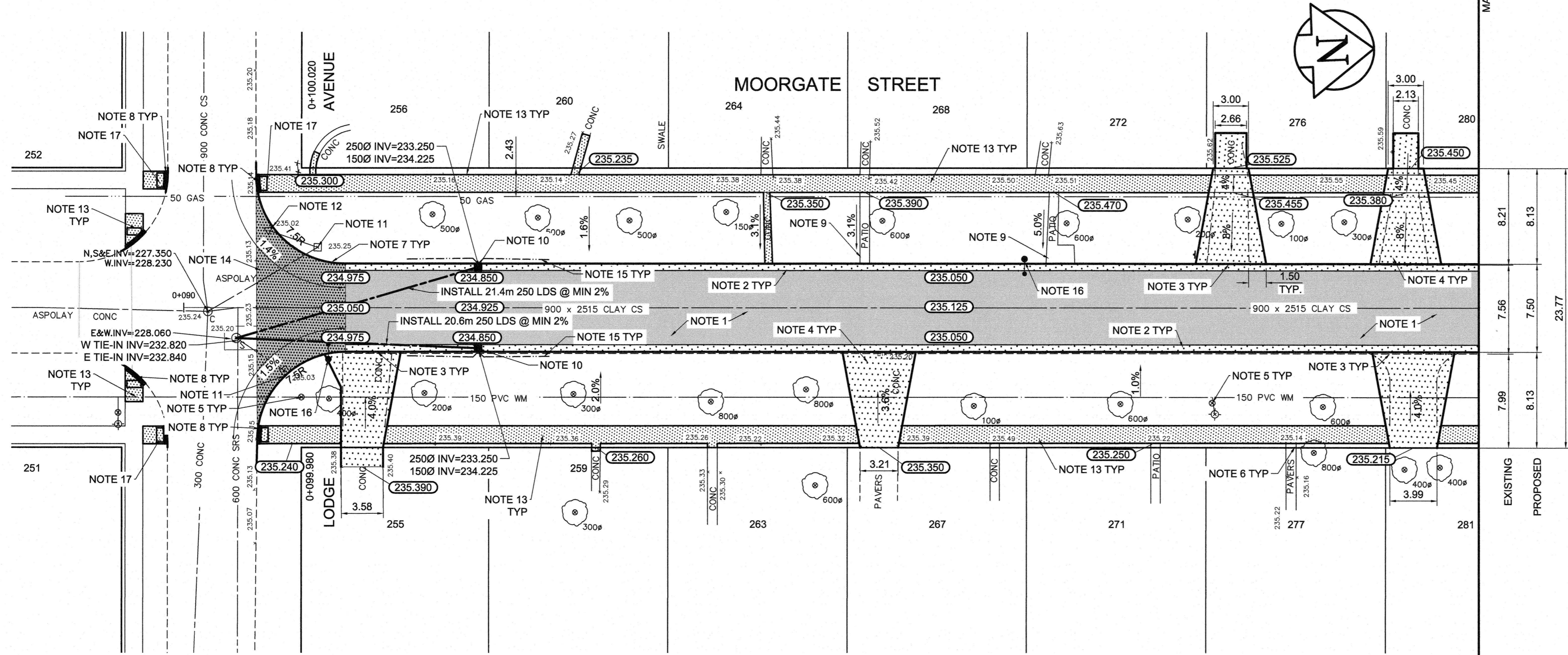


- REFERENCE NOTES**
- PAVEMENT DIMENSIONS ARE TO BACK OF CURB
 - BASELINE IS CENTRE LINE RIGHT-OF-WAY
 - PROPERTY LINES OBTAINED FROM CITY OF WINNIPEG L.B.I.S., AND NO SCALE FACTOR WAS APPLIED
 - REFER TO AECOM FIELD BOOK NO. 4983
- CONSTRUCTION NOTES**
- REMOVE EXISTING CONCRETE AND ASPHALTIC PAVEMENT AND CONSTRUCT NEW ASPHALTIC PAVEMENT TYPE 1A (100mm)
 - CONSTRUCT NEW BARRIER CURB AND GUTTER (600mm WIDTH, 180mm HT.)
 - CONSTRUCT NEW LIP CURB AND GUTTER (40mm HT, INTEGRAL)
 - REMOVE EXISTING CONCRETE PAVEMENT AND CONSTRUCT NEW 150mm REINFORCED CONCRETE PAVEMENT
 - ADJUST EXISTING WATER VALVE TO GRADE
 - REMOVE AND REINSTALL EXISTING PAVING STONES TO GRADE
 - CONSTRUCT NEW MODIFIED BARRIER CURB (180mm HT, INTEGRAL)
 - CONSTRUCT NEW CURB RAMP (10mm REV. HT, INTEGRAL)
 - REMOVE AND REINSTALL EXISTING PATIO BLOCKS TO GRADE
 - INSTALL NEW CURB AND GUTTER INLET c/w CATCHBASIN (SD-024) AND CONNECT TO EXISTING MANHOLE
 - REMOVE EXISTING CATCHBASIN AND ABANDON LEAD
 - REMOVE EXISTING CATCHPIT AND ABANDON LEAD
 - RENEW EXISTING 100mm CONCRETE SIDEWALK
 - REMOVE EXISTING CONCRETE PAVEMENT AND CONSTRUCT NEW 150mm REINFORCED CONCRETE PAVEMENT c/w NEW ASPHALTIC PAVEMENT TYPE 1A (65mm)
 - INSTALL 150mm SUBDRAIN
 - REMOVE EXISTING STREET LIGHT
 - INSTALL NEW DETECTABLE WARNING SURFACE TILE



APEGM
Certificate of Authorization
AECOM Canada Ltd.
No. 4671 Date: *Apr 6/17*

METRIC
WHOLE NUMBERS INDICATE MILLIMETRES
DECIMALIZED NUMBERS INDICATE METRES

150 mm W.M.	150 mm W.M.	HYDRO	—X—	—X—	—X—	—X—	—X—	—X—
WATERMAIN	HYDRANT	M.T.S.	CONCRETE	ASPHALT	PROPERTY LINE	SURVEY BAR	ELEVATION	(35.750)
VALVE	LAND DRAINAGE SEWER	CONCRETE	ASPHALT	PROPERTY LINE	SURVEY BAR	ELEVATION	(35.750)	
WASTEWATER SEWER	MANHOLE	CONCRETE	ASPHALT	PROPERTY LINE	SURVEY BAR	ELEVATION	(35.750)	
CATCH BASIN	CATCH PIT	CONCRETE	ASPHALT	PROPERTY LINE	SURVEY BAR	ELEVATION	(35.750)	
JUNCTIONS	CULVERT	CONCRETE	ASPHALT	PROPERTY LINE	SURVEY BAR	ELEVATION	(35.750)	
GAS		CONCRETE	ASPHALT	PROPERTY LINE	SURVEY BAR	ELEVATION	(35.750)	
EXISTING	LEGEND - PLAN	PROPOSED	EXISTING	LEGEND - PLAN	PROPOSED	EXISTING	LEGEND - PROFILE	PROPOSED

LOCATION APPROVED UNDERGROUND STRUCTURES

SUPV. U/G STRUCTURES COMMITTEE DATE

NOTE:
LOCATION OF UNDERGROUND STRUCTURES AS SHOWN ARE BASED ON THE BEST INFORMATION AVAILABLE. BUT NO GUARANTEE IS GIVEN THAT ALL EXISTING UTILITIES ARE SHOWN OR THAT THE GIVEN LOCATIONS ARE EXACT. CONFIRMATION OF EXISTENCE AND EXACT LOCATION OF ALL SERVICES MUST BE OBTAINED FROM THE INDIVIDUAL UTILITIES BEFORE PROCEEDING WITH CONSTRUCTION.

B.M. 38 - 039 S.W. Corner Sharpe Blvd. & Bruce Ave., Tblt. in N. Conc. foundation No. 336 Sharpe Blvd., 3.3m W. & 0.3m below stucco of S.W. Cor. of dwelling.

DESIGNED BY	BC	CHECKED BY	KWR
DRAWN BY	JC/BC	APPROVED BY	
ISSUED FOR TENDER	04/06/2017	BC	
ISSUED FOR REVIEW	04/04/2017	BC	
REVISIONS	DATE	BY	DATE

AECOM

ENGINEER'S SEAL
PROVINCE OF MANITOBA
K.W. RAE
REGISTERED PROFESSIONAL ENGINEER

THE CITY OF WINNIPEG
PUBLIC WORKS DEPARTMENT
ENGINEERING DIVISION

2017 LOCAL STREET RENEWAL PROGRAM

MOORGATE STREET-BRUCE AVENUE TO LODGE AVENUE
ASPHALT RECONSTRUCTION
LODGE AVENUE TO STATION 0+200

CITY DRAWING NUMBER
SHEET 01 OF 07

CONSULTANT DRAWING NO. CT-01