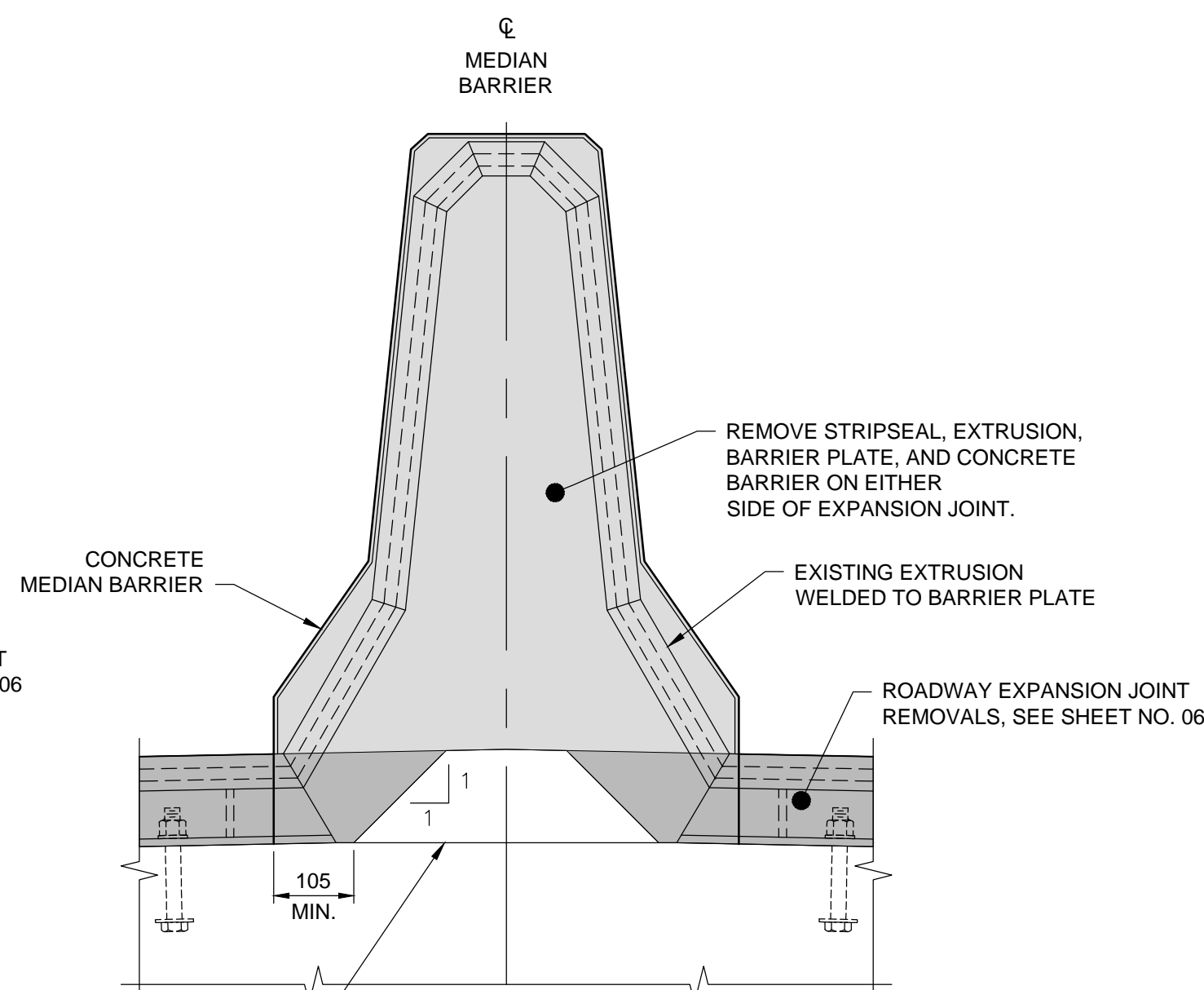
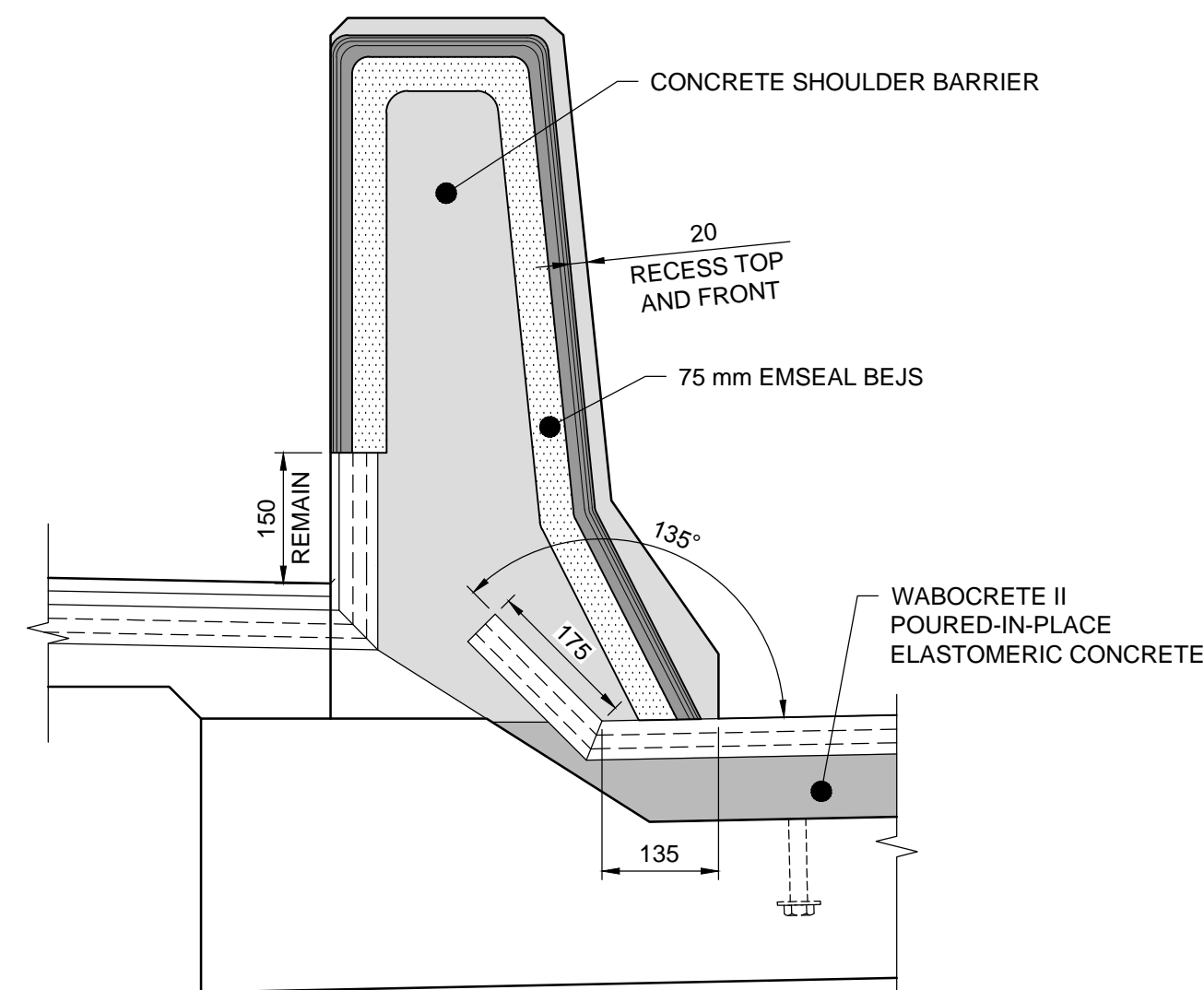


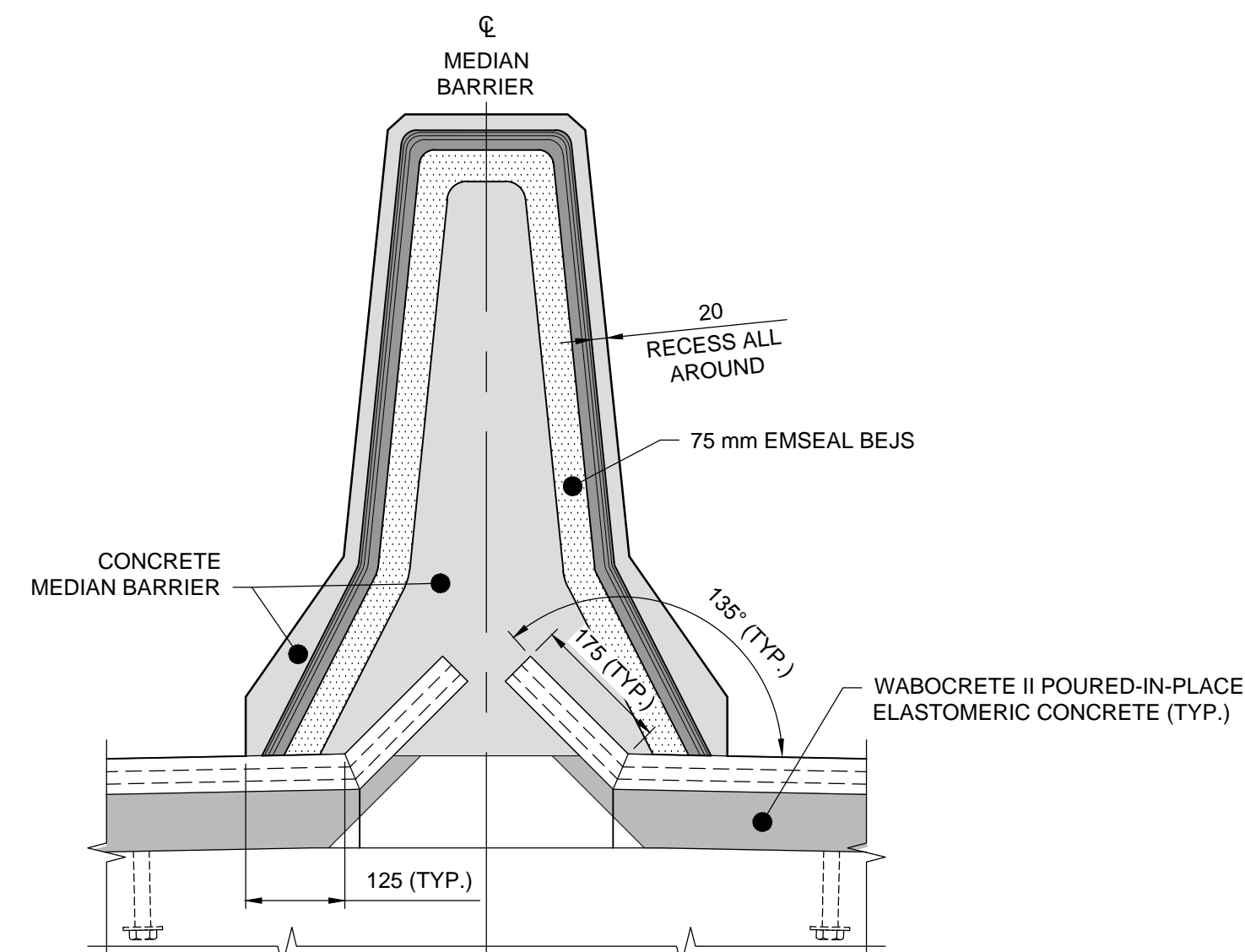
A DETAIL - EXISTING
06 1:8



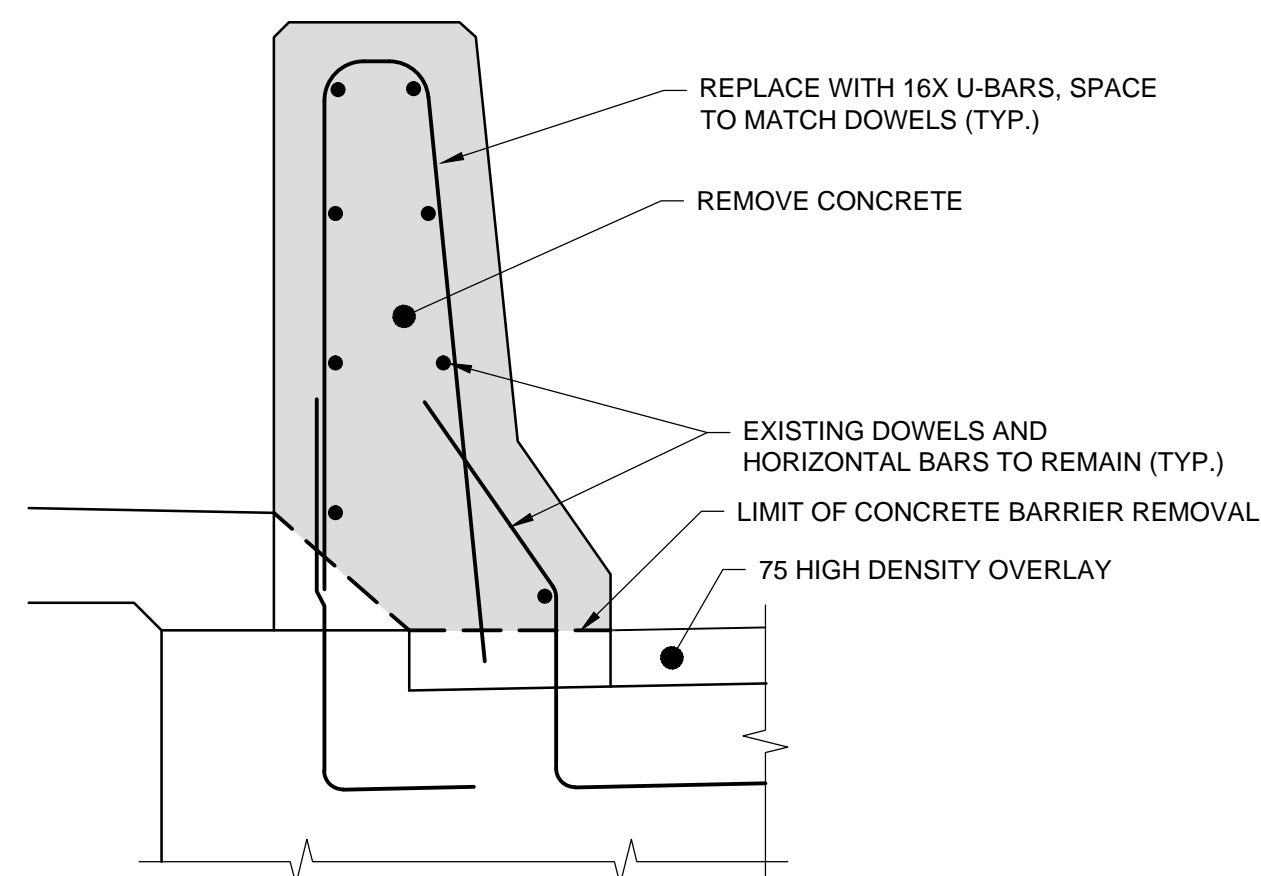
B DETAIL - EXISTING
06 1:8



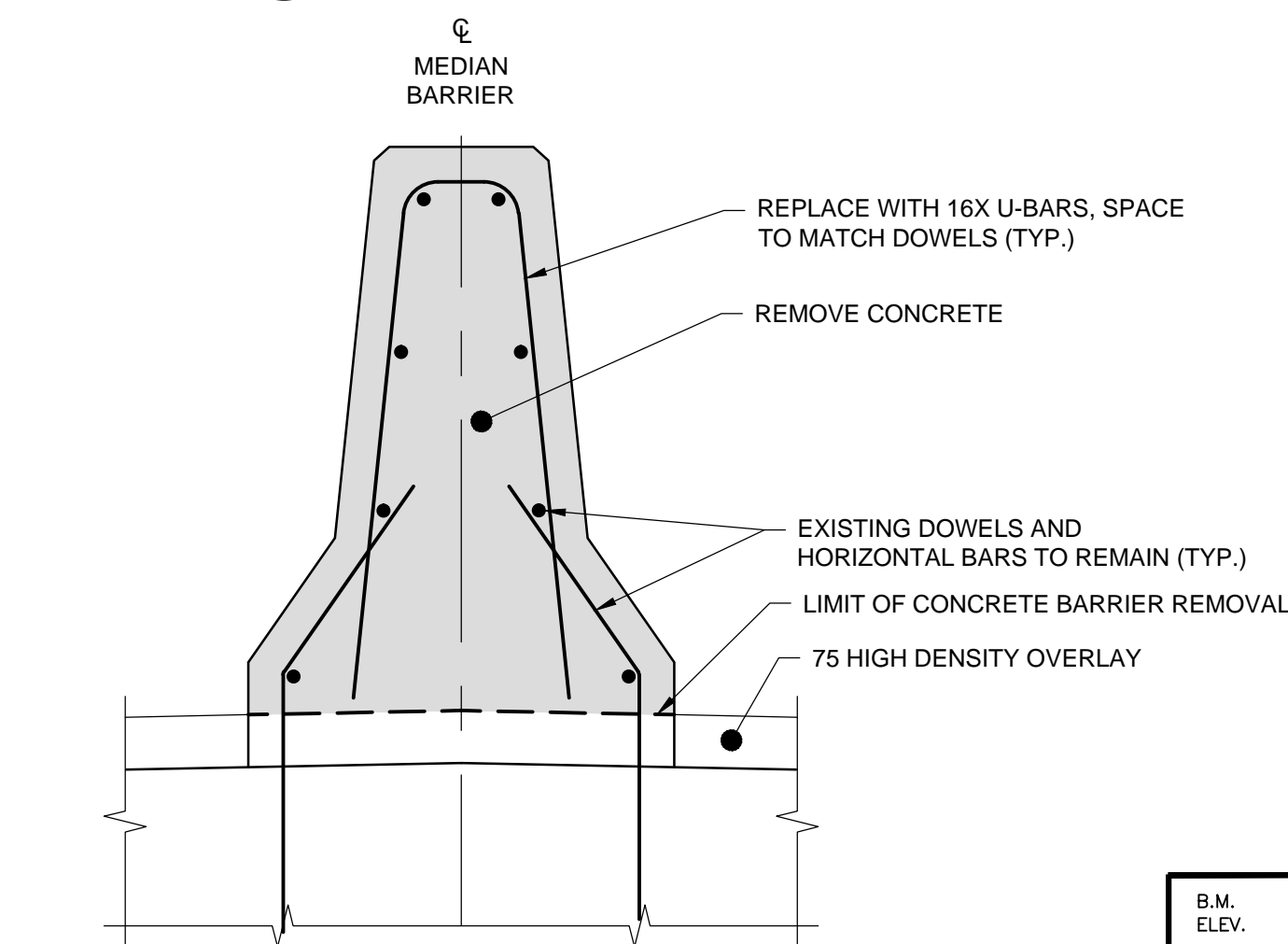
A DETAIL - PROPOSED
06 1:8



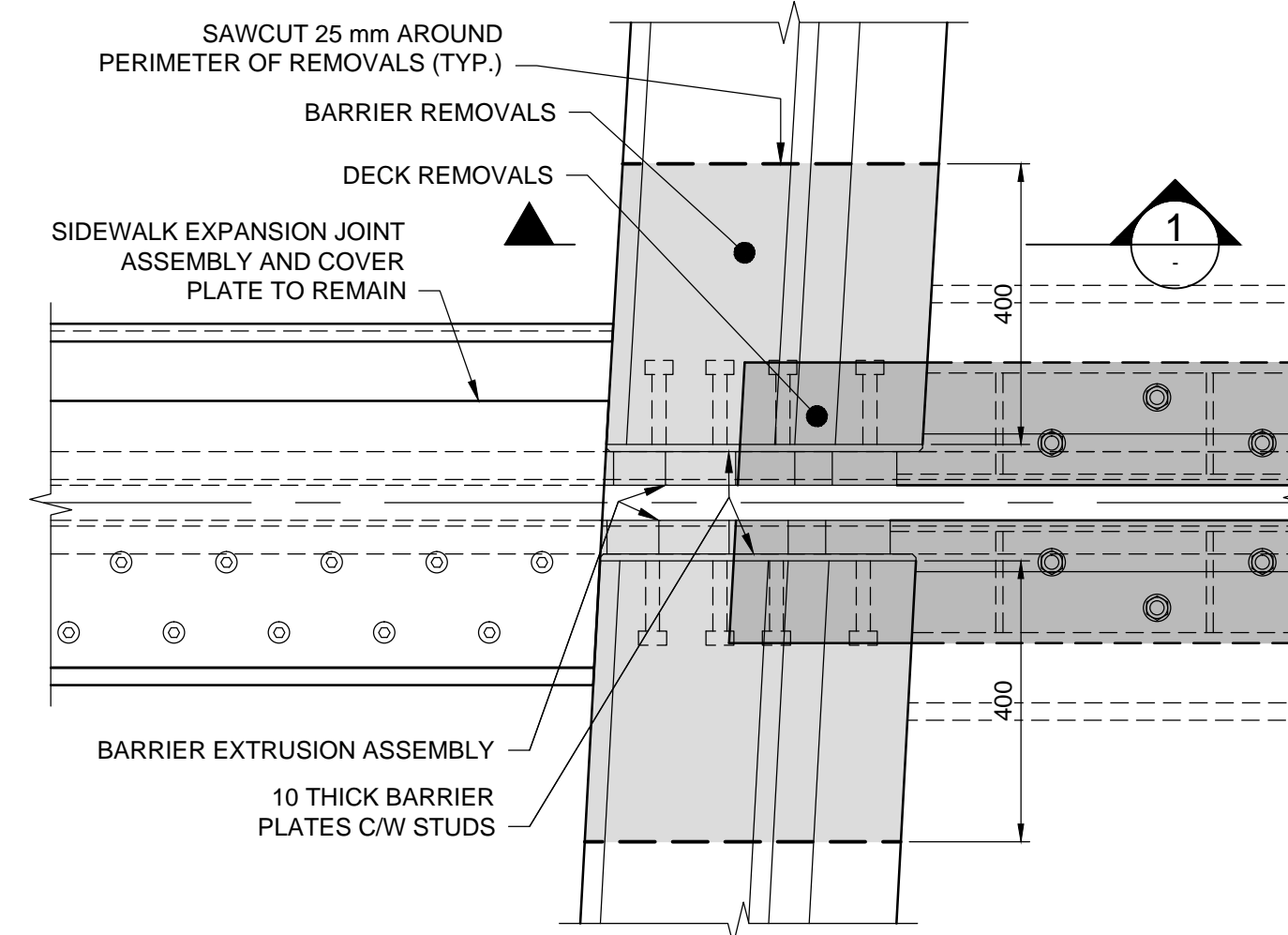
B DETAIL - PROPOSED
06 1:8



1 SECTION - SHOULDER BARRIER REMOVALS
1:10

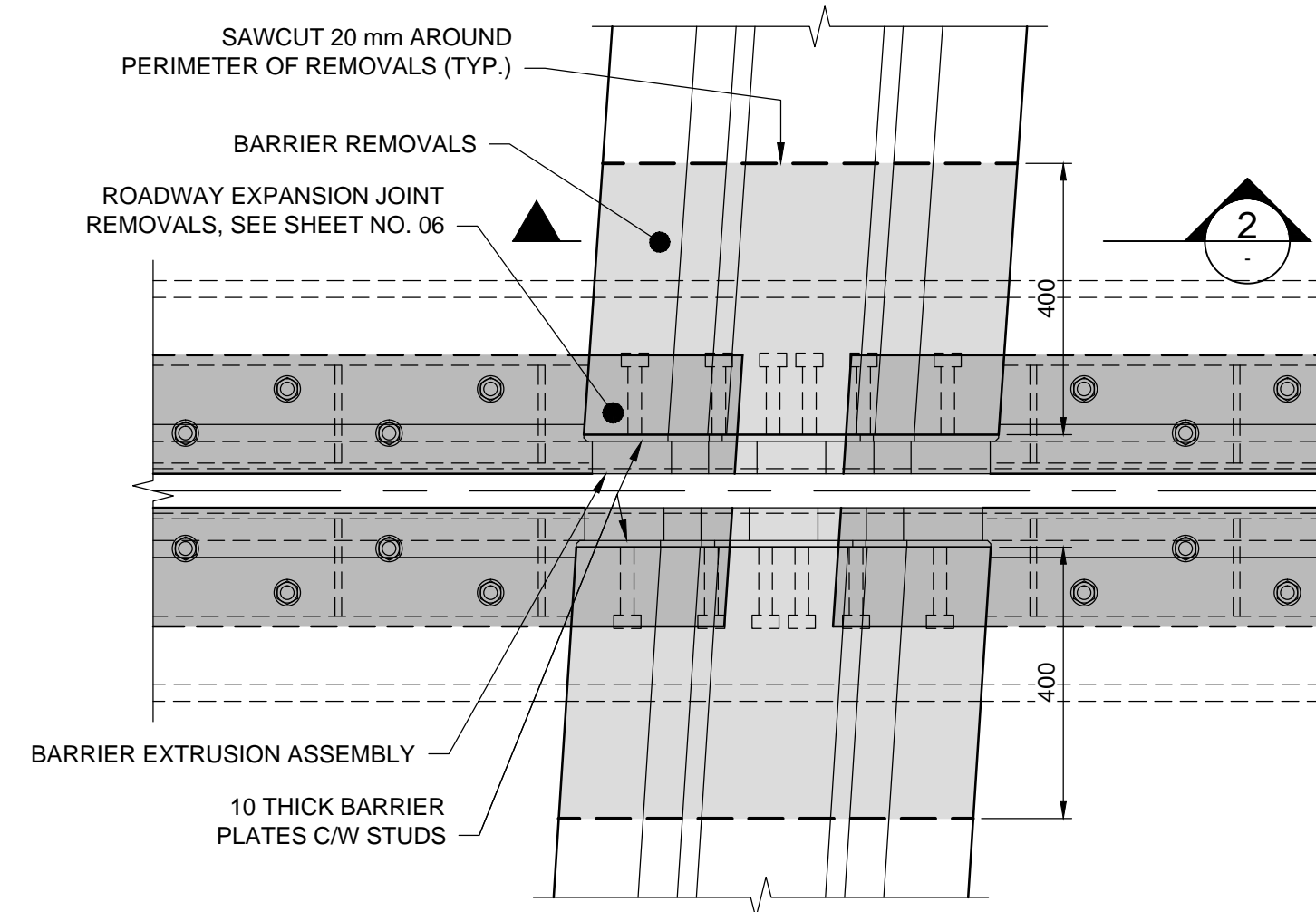


2 SECTION - MEDIAN BARRIER REMOVALS
1:10



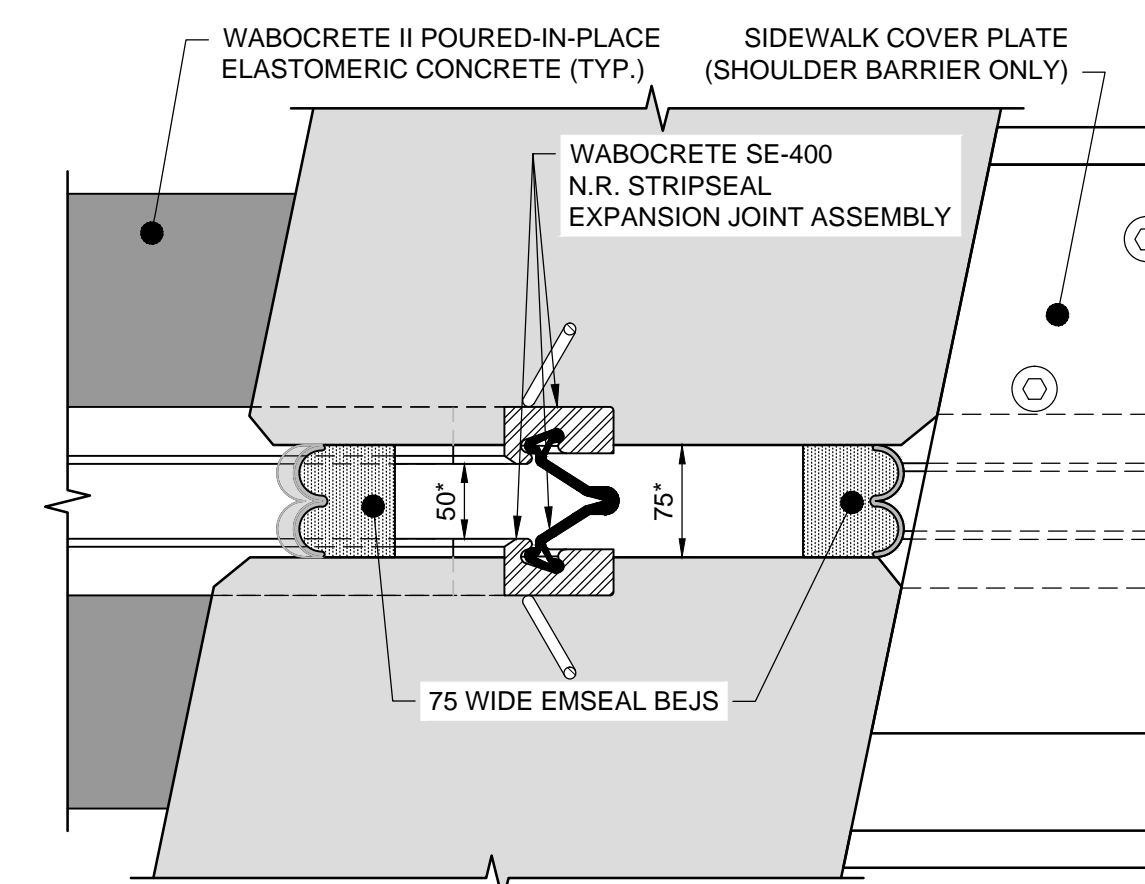
SHOULDER BARRIER EXPANSION JOINT REMOVALS

1:10
WEST SHOULDER BARRIER SHOWN,
EAST SHOULDER BARRIER SIMILAR



MEDIAN BARRIER EXPANSION JOINT REMOVALS

1:10



EXPANSION JOINT AND BARRIER GAPS

1:5

EAST SHOULDER BARRIER SHOWN,
MEDIAN AND WEST SHOULDER BARRIER GAPS SIMILAR

* CONTRACTOR TO VERIFY FINAL GAP DIMENSIONS WITH CONTRACT ADMINISTRATOR PRIOR TO CASTING EXPANSION JOINTS OR BARRIERS.

GENERAL NOTES:

- MANUFACTURER'S SHOP DRAWINGS SHALL BE SUBMITTED TO THE CONTRACT ADMINISTRATOR FOR APPROVAL AT LEAST SEVEN (7) WORKING DAYS PRIOR TO FABRICATION. THE EXPANSION JOINT ASSEMBLIES SHALL BE DESIGNED TO CARRY CAN/CSA-S6-06 CL-625 LIVE LOADING.
- EXPANSION JOINTS SHALL BE WABOCRETE SE-400 N.R. STRIPSEAL JOINTS OR APPROVED EQUAL IN ACCORDANCE WITH B7 OF THE SPECIFICATIONS.
- STEEL SHALL BE IN ACCORDANCE WITH THE LATEST CSA STANDARD CAN/CSA G40.21M GRADE 300W OR EQUAL AND ALL SUBSEQUENT REVISIONS.
- STEEL EXTRUSIONS SHALL BE IN ACCORDANCE WITH THE LATEST CSA STANDARD CAN/CSA G40.21M GRADE 230G MINIMUM AND ALL SUBSEQUENT REVISIONS.
- ALL STEEL SURFACES SHALL BE HOT DIP GALVANIZED TO A NET RETENTION OF 610g/m² AFTER FABRICATION.
- JOINT ASSEMBLY SHALL BE FABRICATED AND COMPLETELY SHOP ASSEMBLED PRIOR TO SHIPMENT.
- EXPANSION JOINT UNITS AND RELATED MATERIALS SHALL BE INSTALLED IN ACCORDANCE WITH MANUFACTURER'S RECOMMENDATIONS.
- EXPANSION JOINTS SHALL BE INSTALLED IN TWO PIECES ACCORDING TO CONSTRUCTION STAGING AND FIELD WELDED DURING INSTALLATION. REFER TO THE MANUFACTURER'S PROCEDURE FOR INSTALLATION.
- WELDING SHALL BE LOW OXYGEN CLASSIFICATION. MANUAL ELECTRODES SHALL BE E7016 OR E7018. ALL WELDING SHALL BE IN ACCORDANCE WITH CSA STANDARD W59.
- SEAL SHALL BE SYNTHETIC NATURAL RUBBER AS SPECIFIED. EACH SEAL SHALL BE SUPPLIED & INSTALLED IN ONE CONTINUOUS PIECE. NO SPLICE IN THE RUBBER SEAL WILL BE PERMITTED.
- UNLESS NOTED, ROADWAY AND BARRIER DIMENSIONS SHOWN ARE TO CONCRETE FACES. EXPANSION JOINT MANUFACTURER SHALL MAKE APPROPRIATE ADJUSTMENTS FOR CHAMFERS AND OFFSETS AS SHOWN ON DETAILS.
- ALL AREAS OF DAMAGED GALVANIZING SHALL BE REPAIRED BY USING THE GALVALLOY PROCEDURE AS SPECIFIED.
- PRIOR TO PLACING CONCRETE, THE EXPANSION JOINT WORKS INSTALLATION SHALL BE APPROVED BY THE CONTRACT ADMINISTRATOR.
- IMMEDIATELY PRIOR TO PLACEMENT OF CONCRETE, ALL EXISTING CONCRETE SURFACES THAT WILL BE IN CONTACT WITH THE EXPANSION JOINT CONCRETE SHALL BE COATED WITH PRIMER IN ACCORDANCE WITH THE MANUFACTURER'S RECOMMENDATION.
- LOOSEN ERECTION BOLTS WITHIN 3 HOURS OF CONCRETING TO ALLOW JOINT MOVEMENT DUE TO TEMPERATURE CHANGE.
- AFTER REMOVAL OF CLAMPING CHANNELS AND SPACER DAM, BOLT HOLES TO BE FILLED WITH AN APPROVED EPOXY GROUT.
- ALL FIELD WELDING AND ASSOCIATED FIELD GALVANIZING SHALL TAKE PLACE PRIOR TO INSTALLATION OF EXPANSION JOINT SEALS.
- ALL SURFACES IN CONTACT WITH JOINT SEALS SHALL BE CLEANED PRIOR TO INSTALLATION OF SEALS.
- CONCRETE SHOULD AND MEDIAN BARRIERS SHALL BE CONSTRUCTED AFTER EXPANSION JOINT INSTALLATION AND PRIOR TO INSTALLATION OF EXPANSION JOINT SEALS.

METRIC

WHOLE NUMBERS INDICATE MILLIMETRES
DECIMALIZED NUMBERS INDICATE METRES

B.M. ELEV.	DESIGNED BY DRA				CITY DRAWING NUMBER B114-17-07	
	DRAWN BY KB				2017 BRIDGE MAINTENANCE - MIDTOWN BRIDGE & ST. VITAL BRIDGE REPAIRS	SHEET 07 OF 17
	CHECKED BY SSR				MIDTOWN EXPANSION JOINT REPLACEMENT DETAILS	CONSULTANT DRAWING NUMBER --
	APPROVED BY RJT					
	HOR. SCALE -	RELEASED FOR CONSTRUCTION	CONSULTANT PROJECT NUMBER 17-5199			
0 ISSUED FOR TENDER	02/25/17	RJT	VERTICAL			
NO. REVISIONS	DATE	BY	DATE	FEBRUARY 24, 2017		