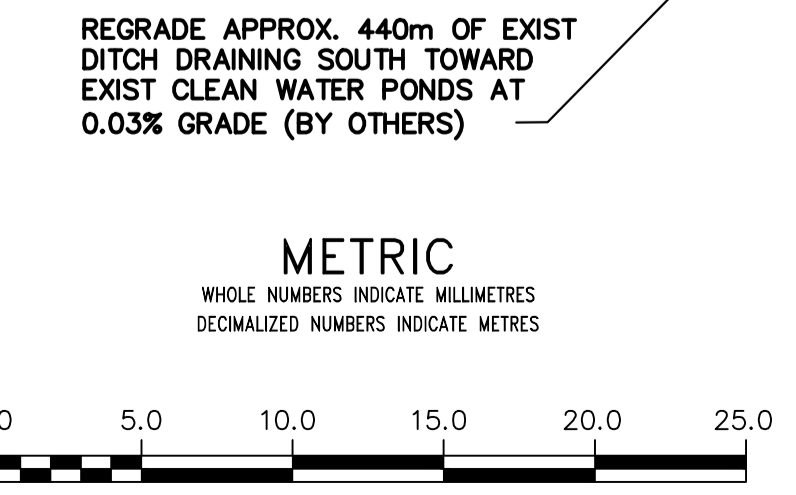


CENTRE LINE CO-ORDINATE LOCATIONS		
STATION	NORTHING	EASTING
11+00	5513278.696	629540.809
12+25	5513340.993	629694.179

PROPERTY LIMITS DELINEATION
 DELINEATION OF PROPERTY LIMITS AS SHOWN ON THIS DWG DOES NOT REPRESENT A "LEGAL SURVEY". KGS GROUP MAKES NO REPRESENTATION OR WARRANTY AS TO THE ACCURACY OF PROPERTY LIMITS DELINEATED ON THIS DWG, NOR ON THE DIMENSIONAL ACCURACY OF DWG FEATURES RELATIVE TO THOSE PROPERTY LIMITS.



WARNING
 IF POWER EQUIPMENT OR EXPLOSIVES ARE TO BE USED FOR EXCAVATION ON THIS PROJECT THE CONTRACTOR MUST:
 1) NOTIFY THE GAS COMPANY OF THE PROPOSED LOCATION OF EXCAVATION.
 2) TAKE PRECAUTION TO AVOID DAMAGE TO GAS COMPANY INSTALLATIONS.
 SEE PROVINCIAL REGULATION 210/72 FOR DETAILS

LOCATION APPROVED UNDERGROUND STRUCTURES
 SUPV. U/G STRUCTURES COMMITTEE DATE
 NOTE:
 LOCATION OF UNDERGROUND STRUCTURES AS SHOWN ARE BASED ON THE BEST INFORMATION AVAILABLE BUT NO GUARANTEE IS GIVEN THAT ALL EXISTING UTILITIES ARE SHOWN OR THAT THE GIVEN LOCATIONS ARE EXACT. CONFIRMATION OF EXISTENCE AND EXACT LOCATION OF ALL SERVICES MUST BE OBTAINED FROM THE INDIVIDUAL UTILITIES BEFORE PROCEEDING WITH CONSTRUCTION.

B.M.	ELEV.	NO.	ISSUED FOR TENDER	DATE	BY

KGS GROUP CONSULTING ENGINEERS

DESIGNED BY	E.W.	CHECKED BY	
DRAWN BY	D.M.W.	APPROVED BY	
SCALE:		RELEASED FOR CONSTRUCTION	
HORIZONTAL	1:250		
VERTICAL	1:10		
DATE	2018 02 26	DATE	

ENGINEER'S SEAL
 CONSULTANT DRAWING NUMBER
 17-0107-010_C12

THE CITY OF WINNIPEG WATER AND WASTE DEPARTMENT ENGINEERING DIVISION

CHARETTE ROAD RENEWAL

CHARETTE ROAD STA 11+00 TO STA 12+25

SHEET 12 OF 13
 CITY DRAWING NUMBER
 1-0400A-C0041-001