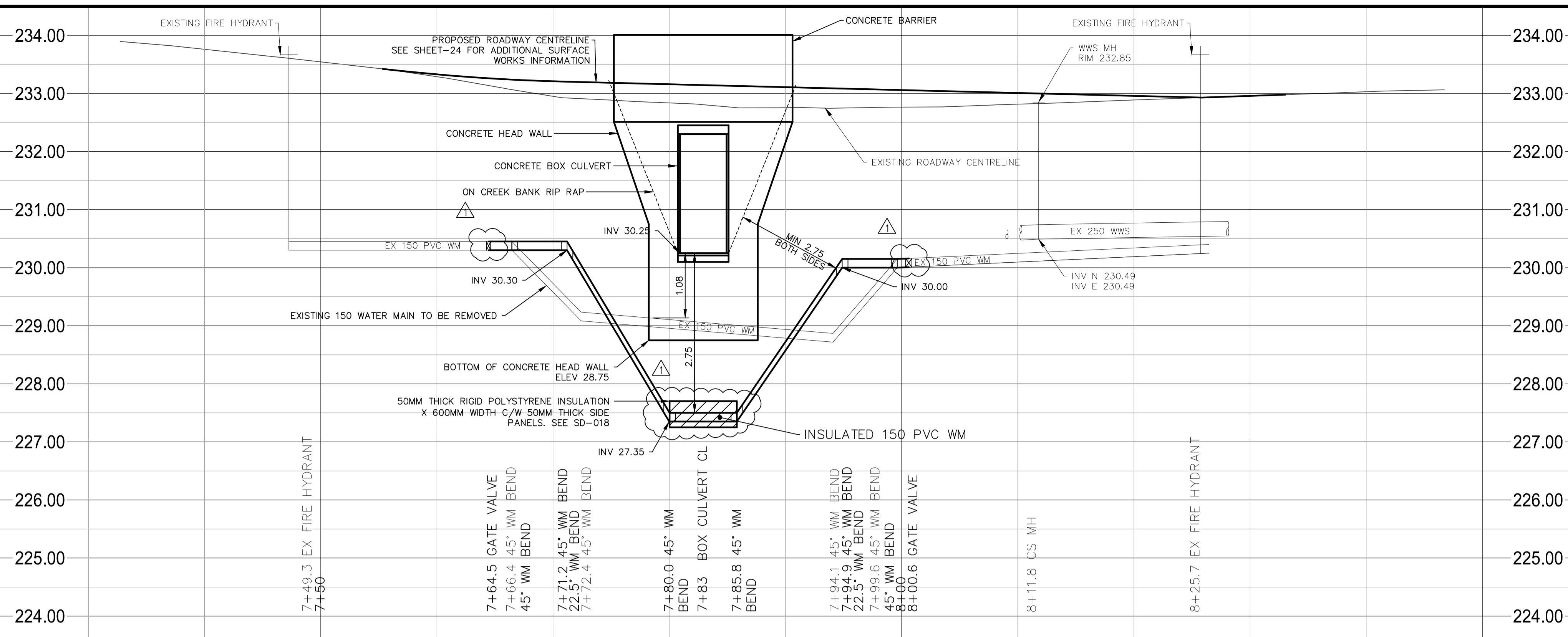


A1 SIZE (594 mm x 841 mm)

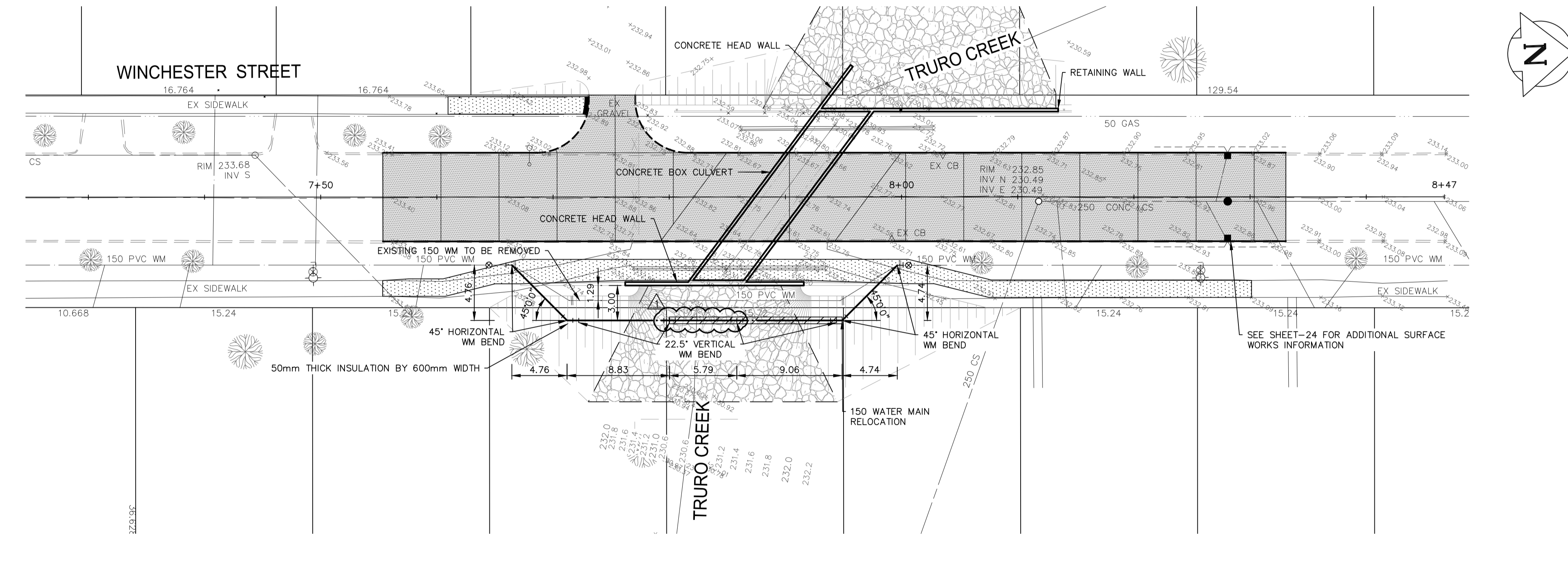


GENERAL NOTES

1. ALL WORK IN ACCORDANCE WITH CITY OF WINNIPEG STANDARD CONSTRUCTION SPECIFICATIONS.
2. ALL WORK SHALL BE CARRIED OUT IN COMPLIANCE WITH THE APPLICABLE HEALTH AND SAFETY ACT AND REGULATIONS FOR CONSTRUCTION PROJECTS.
3. THE CONTRACTOR IS ADVISED THAT WORK BY OTHERS MAY BE ONGOING DURING THE PERIOD OF THIS CONTRACT. THE CONTRACTOR SHALL COORDINATE CONSTRUCTION ACTIVITIES WITH ALL OTHER CONTRACTORS AND PREVENT CONSTRUCTION CONFLICTS.
4. ADD 200.00m TO OBTAIN ACTUAL GEODETIC ELEVATIONS.
5. CONTRACTOR TO VERIFY DEPTH OF UTILITIES PRIOR TO CONSTRUCTION. LOCATION OF UNDERGROUND STRUCTURES AS SHOWN ARE BASED ON THE BEST INFORMATION AVAILABLE, BUT NO GUARANTEE IS GIVEN THAT ALL EXISTING UTILITIES ARE SHOWN OF THAT THE GIVEN LOCATIONS ARE EXACT. CONFIRMATION OF EXISTING AND EXACT LOCATIONS OF ALL SERVICES MUST BE OBTAINED FROM THE INDIVIDUAL UTILITIES BEFORE PROCEEDING WITH CONSTRUCTION.
6. MAINTAIN ACCESS TO ALL ESTABLISHMENTS AT ALL TIMES.
7. RESTORE ALL SURFACES TO EQUAL OR BETTER CONDITION, OR AS SPECIFIED ON THE DRAWINGS.
8. EXISTING DRAINAGE TO BE MAINTAINED AT ALL TIMES.

WATER MAIN

1. WATER MAIN SHALL BE POLYVINYL CHLORIDE (P.V.C.) CLASS 150 PIPE (DR18) MANUFACTURED TO AWWA C-900-89 WITH GASKET BELL END c/w #14 AWG COPPER TRACER WIRE.
2. ALL WATER MAIN SHALL BE INSTALLED TO A MINIMUM DEPTH OF COVER OF 2.75 METRES.
3. ALL WATER MAIN BEDDING SHALL BE CLASS "2" GRANULAR BEDDING SHALL NOT BE LESS THAN 150mm BELOW THE PIPE AND 300mm ABOVE.
4. THRUST BLOCKS MUST BE INSTALLED ON ALL WATER MAIN BENDS AND TEES.
5. WATER MAINS MUST COMPLY WITH MINIMUM HORIZONTAL AND VERTICAL CLEARANCES IN ACCORDANCE WITH LOCAL PROVINCIAL GUIDELINES AND THE APPLICABLE BUILDING AND PLUMBING CODE.
6. ALL WATER MAINS SHALL BE BACTERIOLOGICALLY TESTED IN ACCORDANCE WITH CITY OF WINNIPEG AND PROVINCIAL GUIDELINES. ALL CHLORINATED WATER TO BE DISCHARGED AND PRE-TREATED TO ACCEPTABLE LEVELS PRIOR TO DISCHARGE. ALL DISCHARGED WATER MUST BE CONTROLLED AND TREATED SO AS NOT TO ADVERSELY AFFECT THE ENVIRONMENT. THE LOCAL MUNICIPALITY MAY HAVE SPECIFIC REQUIREMENTS TO BE COMPLIED WITH. IT IS THE RESPONSIBILITY OF THE CONTRACTOR TO ENSURE THAT ALL MUNICIPAL AND/OR PROVINCIAL REQUIREMENTS ARE FOLLOWED.

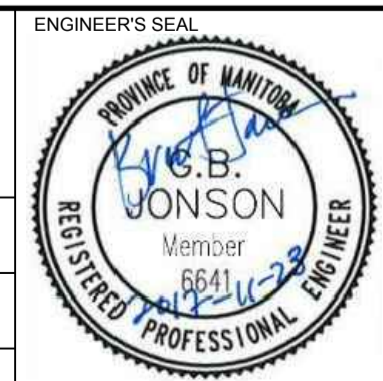


NOTE:
These design documents are prepared solely for the use by the party with whom the design professional has entered into a contract and there are no representations of any kind made by the design professional to any party with whom the design professional has not entered into a contract.

---	WATER MAIN	●	HYDRO POLE & LIGHT STANDARD		
---	LAND DRAINAGE SEWER	○	LIGHT STANDARD OR TRAFFIC SIGNAL		
---	WASTE WATER SEWER	○	HYDRO POLE		
---	HYDRO				
---	M.T.S.				
---	GAS		CURB RAMP	→	
---	SIGNALS		DETECTABLE WARNING SURFACE TILE	■	
○	MANHOLE	■	EDGE OF SIDEWALK		
△	CATCH BASIN	▲	FENCE		
△	CURB INLET	□	PROPERTY LINE		
∩	UTILITIES ADJUSTED	---	EDGE OF ASPHALT	----	
◇	PLUG	---	EDGE OF CONCRETE	----	
⊙	HYDRANT	---	MODIFIED BARRIER CURB	----	
⊙	VALVE	---	BARRIER CURB	----	
⊙	CURB STOP	---	BARRIER CURB AND GUTTER	----	
---	GROUND GRADE	31.00	MODIFIED BARRIER CURB AND GUTTER	----	
---	PAVEMENT GRADE	(31.00)	CONCRETE SIDEWALK/MEDIAN	----	
---	ANCHOR	---	CONCRETE PAVEMENT	----	
---	CIVIC ADDRESS		ASPHALT OVERLAY	----	
---	IRON BAR		ASPHALT MILLING	----	
---	EXISTING LEGEND-PLAN		EXISTING LEGEND-PROFILE		
---	PROPOSED		PROPOSED		



LOCATIONS APPROVED UNDERGROUND STRUCTURES			G.B.M. = TOP NUT OF FIRST HYDRANT SOUTH OF INTERSECTION BETWEEN NESS AVENUE AND LINWOOD STREET													
ELEV. =	233.659															
SIGNED BY:	DATE															
SUPV U/G STRUCTURES																
<p>LOCATION OF UNDERGROUND STRUCTURES AS SHOWN ARE BASED ON THE BEST INFORMATION AVAILABLE BUT NO GUARANTEE IS GIVEN THAT ALL EXISTING UTILITIES ARE SHOWN OR THAT THE GIVEN LOCATIONS ARE EXACT. CONFIRMATION OF EXISTENCE AND EXACT LOCATION OF ALL SERVICES MUST BE OBTAINED FROM THE INDIVIDUAL UTILITIES BEFORE PROCEEDING.</p>																
<table border="1"> <thead> <tr> <th>No.</th> <th>REVISIONS</th> <th>DATE</th> <th>BY</th> </tr> </thead> <tbody> <tr> <td>1</td> <td>ISSUED FOR ADDENDUM No. 2</td> <td>17.12.08</td> <td>JL</td> </tr> <tr> <td>0</td> <td>ISSUED FOR TENDER</td> <td>17.11.23</td> <td>JL</td> </tr> </tbody> </table>			No.	REVISIONS	DATE	BY	1	ISSUED FOR ADDENDUM No. 2	17.12.08	JL	0	ISSUED FOR TENDER	17.11.23	JL		
No.	REVISIONS	DATE	BY													
1	ISSUED FOR ADDENDUM No. 2	17.12.08	JL													
0	ISSUED FOR TENDER	17.11.23	JL													
<table border="1"> <thead> <tr> <th>DESIGNED BY</th> <th>BJ</th> <th>CHECKED BY</th> <th>MW</th> </tr> </thead> <tbody> <tr> <td colspan="2">DRAWN BY VA</td> <td colspan="2">APPROVED BY JL</td> </tr> </tbody> </table>			DESIGNED BY	BJ	CHECKED BY	MW	DRAWN BY VA		APPROVED BY JL		<p>WSP Canada Group Limited 93 Lombard Avenue, Suite 111 Winnipeg MB R3B 3B1 T+ 1 204-943-3178 F+ 1 204-943-4948 www.wsp.com</p>					
DESIGNED BY	BJ	CHECKED BY	MW													
DRAWN BY VA		APPROVED BY JL														
<table border="1"> <thead> <tr> <th>HOR. SCALE</th> <td>1:250</td> <th>RELEASED FOR CONSTRUCTION</th> <td></td> </tr> </thead> <tbody> <tr> <td>VERTICAL</td> <td>1:50</td> <td></td> <td></td> </tr> </tbody> </table>			HOR. SCALE	1:250	RELEASED FOR CONSTRUCTION		VERTICAL	1:50			<p>CONSULTANT PROJECT No. 17M-00806-00</p>					
HOR. SCALE	1:250	RELEASED FOR CONSTRUCTION														
VERTICAL	1:50															



METRIC
WHOLE NUMBERS INDICATE MILLIMETRES
DECIMALIZED NUMBERS INDICATE METRES

THE CITY OF WINNIPEG PUBLIC WORKS DEPARTMENT ENGINEERING DIVISION	CITY DRAWING NUMBER C322-17-25
TRURO CREEK CULVERT REPLACEMENT AT WINCHESTER STREET	BID OPPORTUNITY NUMBER 1014-2017
WATER MAIN RENEWAL	SHEET OF 25 25 REV 1