

SECTION 09 67 23. RESINOUS FLOORING
PART 1 - GENERAL

- 1.0 SUMMARY
- .1 FLOOR TO HAVE A TWO-COMPONENT GENERAL SERVICE 100% SOLIDS EPOXY COATING WITH DECORATIVE BROADCAST FLAKES, A TWO-COMPONENT 100% SOLIDS CLEAR SEALER TO BE APPLIED AFTERWARDS. RESINOUS COVES INCLUDES PENETRATING, MOISTURE TOLERANT, TWO-COMPONENT EPOXY PRIMER, A HIGH PERFORMANCE, THREE-COMPONENT MORTAR CONSISTING OF EPOXY RESIN, CURING AGENT AND SELECTED, GRADED AGGREGATES BLENDED WITH INORGANIC PIGMENTS AND A TWO-COMPONENT, GENERAL SERVICE EPOXY COATING. DECORATIVE FLAKES TO BE BROADCASTED WITHIN THE EPOXY COATING.
- 1.1 SUBMITTALS
- .1 PRODUCT DATA: SUBMIT MANUFACTURER'S TECHNICAL DATA, INSTALLATION INSTRUCTIONS, AND GENERAL RECOMMENDATIONS FOR EACH RESINOUS FLOORING MATERIAL REQUIRED. INCLUDE CERTIFICATION INDICATING COMPLIANCE OF MATERIALS WITH REQUIREMENTS.
 - .2 SAMPLES: SUBMIT 4-INCH SQUARE SAMPLES OF EACH TIME OF RESINOUS FLOORING REQUIRED, APPLIED TO A RIGID BACKING, IN COLOUR AND FINISH INDICATED
 - .1 FOR INITIAL SELECTION OF COLOURS AND FINISHES, SUBMIT MANUFACTURER'S COLOUR CHARTS SHOWING FULL RANGE OF COLOURS AND FINISHES AVAILABLE
- 1.2 QUALITY ASSURANCE
- .1 ECOPOXY OR APPROVED EQUAL IN ACCORDANCE WITH B7.
 - .2 ISO 9002; ALL MATERIALS, INCLUDING PRIMERS, RESINS, CURING AGENTS, FINISH COATS, AGGREGATES AND SEALANT ARE MANUFACTURED AND TESTED UNDER AND ISO 9002 REGISTERED QUALITY SYSTEM.
- 1.3 DELIVERY, STORAGE, AND HANDLING
- .1 MATERIAL SHALL BE DELIVERED TO JOB SITE AND CHECKED BY FLOORING CONTRACTOR FOR COMPLETENESS AND SHIPPING DAMAGE PRIOR TO JOB START.
 - .2 ALL MATERIALS USED SHALL BE FACTORY PRE-WEIGHED AND PRE-PACKAGED IN SINGLE, EASY TO MANAGE BATCHES TO ELIMINATE SITE MIXING ERRORS. NO ON SITE WEIGHING OR VOLUMETRIC MEASUREMENTS ALLOWED
 - .3 MATERIAL SHALL BE STORED IN A DRY, ENCLOSED AREA PROTECTED FROM EXPOSURE TO MOISTURE. TEMPERATURE OF STORAGE AREA SHALL BE MAINTAINED BETWEEN 16 AND 30 DEGREES CELSIUS (60-85F)
- 1.4 PROJECT CONDITIONS
- .1 JOB AREA TO BE FREE OF OTHER TRADES AND FOOT TRAFFIC DURING, AND FOR A PERIOD OF 24 HOURS AFTER, FLOOR INSTALLATION
 - .2 PROTECTION OF FINISHED FLOOR FROM DAMAGE BY SUBSEQUENT TRADES SHALL BE THE RESPONSIBILITY OF THE CONTRACTOR.
- 1.5 WARRANTY
- .1 MANUFACTURER SHALL FURNISH A SINGLE, WRITTEN WARRANTY COVERING BOTH MATERIAL AND WORKMANSHIP FOR A PERIOD OF ONE (1) YEAR FROM DATE OF INSTALLATION
- PART 2 - PRODUCTS
- 2.0 COLOURS
- .1 COLOURS AS SELECTED BY CONTRACT ADMINISTRATOR FROM MANUFACTURER'S STANDARD COLOURS
- 2.1 EPOXY FLOORING
- .1 ECOPOXY FLOOR COATING, HIGH BUILD EPOXY CONCRETE FLOOR COATING, 100% SOLIDS, 2 COMPONENT EPOXY
 - .2 ECOPOXY GRIP COAT, HIGH BUILD EPOXY SLIP RESISTANT COATING, 3 DIFFERENT SIZE AGGREGATED ADDED TO ECOPOXY GRIP COAT
 - .3 ECOPOXY PRIMER, TESTED TO ASTM F2170 OR ASTM F1869
 - .4 ALL PRODUCTS TO BE INSTALLED USING MANUFACTURER'S SPECIFICATIONS
- 2.2 JOINT SEALANT MATERIALS
- .1 TYPE PRODUCED BY MANUFACTURER OF RESINOUS FLOORING SYSTEM FOR TYPE OF SERVICE AND JOINT CONDITION INDICATED.
- PART 3 - EXECUTION
- 3.0 PREPARATION
- .1 REPAIR CRACKS AND SURFACE DEFECTS PRIOR TO INSTALLATION
 - .2 CONCRETE PREPARATION SHALL BE BY MECHANICAL MEANS AND INCLUDE USE OF A SCABBLER, SCARIFIER OR SHOT BLAST MACHINE FOR REMOVAL OF BOND INHIBITING MATERIALS SUCH AS CURING COMPOUNDS OR LAITANCE.
- 3.1 APPLICATION
- .1 GENERAL: APPLY EACH COMPONENT OF RESINOUS FLOORING SYSTEM IN COMPLIANCE WITH MANUFACTURER'S DIRECTIONS TO PRODUCE A UNIFORM MONOLITHIC WEARING SURFACE OF THICKNESS INDICATED, UNINTERRUPTED EXCEPT AT DIVIDER STRIPS, SAWN JOINTS OR OTHER TYPES OF JOINTS (IF ANY), INDICATED OR REQUIRED
 - .2 PRIMER: MIX AND APPLY PRIMER OVER PROPERLY PREPARED SUBSTRATE WITH STRICT ADHERENCE TO MANUFACTURER'S INSTALLATION PROCEDURES AND COVERAGE RATES. COORDINATE TIMING OF PRIMER APPLICATION WITH APPLICATIONS OF TROWELED MORTAR TO ENSURE OPTIMUM ADHESION BETWEEN RESINOUS FLOORING MATERIALS AND SUBSTRATE
 - .3 TROWELED MORTAR: MIX MORTAR MATERIAL ACCORDING TO MANUFACTURER'S RECOMMENDED PROCEDURES. UNIFORMLY SPREAD MORTAR OVER SUBSTRATE USING MANUFACTURER'S SPECIALLY DESIGNED SCREED BOX ADJUSTED TO MANUFACTURER'S RECOMMENDED HEIGHT. HAND TROWEL APPLY MIXED MATERIAL OVER FRESHLY PRIMED SUBSTRATE USING STAINLESS STEEL FINISHING TROWELS. COATING: REMOVE ANY SURFACE IMPERFECTIONS BY LIGHTLY ABRADING AND VACUUM IN THE FLOOR SURFACE. MIX, SQUEEGEE APPLY AND BACKROLL COATING WITH STRICT ADHERENCE TO MANUFACTURER'S INSTALLATION PROCEDURES AND COVERAGE RATES
 - .4 IF TEST RESULTS SHOW MATERIALS BEING USED DO NOT COMPLY WITH SPECIFIED REQUIREMENTS, CONTRACTOR MAY BE DIRECTED BY CONTRACT ADMINISTRATOR TO STOP WORK; REMOVE NON-COMPLYING MATERIALS, PAY FOR TESTING, REAPPLY FLOORING MATERIALS TO PROPERLY PREPARED SURFACES WHICH HAD PREVIOUSLY BEEN COATED WITH UNACCEPTABLE MATERIALS.
- 3.2 FIELD QUALITY CONTROL
- .1 THE RIGHT IS RESERVED TO INVOKE THE FOLLOWING MATERIAL TESTING PROCEDURE AT ANY TIME, AND ANY NUMBER OF TIMES DURING THE PERIOD OF FLOORING APPLICATION.
 - .2 THE CITY WILL ENGAGE SERVICE OF AN INDEPENDENT TESTING LABORATORY TO SAMPLE MATERIALS BEING USED ON THE JOB SITE. SAMPLES OF MATERIAL WILL BE TAKEN, IDENTIFIED AND SEALED, AND CERTIFIED IN PRESENCE OF CONTRACTOR.
 - .3 TESTING LABORATORY WILL PERFORM TESTS FOR ANY OF CHARACTERISTICS SPECIFIED, USING APPLICABLE TESTING PROCEDURES REFERENCED HEREIN, OR IF NONE REFERENCED, IN MANUFACTURER'S PRODUCT DATA.
 - .4 IF TEST RESULTS SHOW MATERIALS BEING USED DO NOT COMPLY WITH SPECIFIED REQUIREMENTS, CONTRACTOR MAY BE DIRECTED BY CONTRACT ADMINISTRATOR TO STOP WORK; REMOVE NON-COMPLYING MATERIALS, PAY FOR TESTING, REAPPLY FLOORING MATERIALS TO PROPERLY PREPARED SURFACES WHICH HAD PREVIOUSLY BEEN COATED WITH UNACCEPTABLE MATERIALS.
- 3.3 CURING, PROTECTION, AND CLEANING
- .1 CURE RESINOUS FLOORING MATERIALS IN COMPLIANCE WITH MANUFACTURER'S DIRECTIONS, TAKING CARE TO PREVENT CONTAMINATION DURING STAGES OF APPLICATION AND PRIOR TO COMPLETION OF CURING PROCESS. CLOSE AREA OF APPLICATION FOR A MINIMUM OF 24 HOURS.
 - .2 PROTECT RESINOUS FLOORING MATERIALS FROM DAMAGE AND WEAR DURING CONSTRUCTION OPERATION. WHERE TEMPORARY COVERING IS REQUIRED FOR THIS PURPOSE, COMPLY WITH MANUFACTURER'S RECOMMENDATIONS FOR PROTECTIVE MATERIALS AND METHOD OF APPLICATION. CONTRACTOR IS RESPONSIBLE FOR PROTECTION AND CLEANING OF SURFACES AFTER FINAL COATS.
 - .3 CLEANING: REMOVE TEMPORARY COVERING AND CLEAN RESINOUS FLOORING JUST PRIOR TO FINAL INSPECTION. USE CLEANING MATERIALS AND PROCEDURES RECOMMENDED BY RESINOUS FLOORING MANUFACTURER.

SPECIFICATIONS:

S.S. - STAINLESS STEEL
SUBMIT SHOP DRAWINGS FOR APPROVAL

PLUMBING:
STAINLESS SINKS

- 18GA S.S. T304#4 MINIMUM - ALL COVERED WELDED INTEGRAL INTO COUNTERTOP - WELDS CLEANED AND POLISHED TO BLEND WITH S.S. TOP.
- SEE SIZES ON DRAWING
- 3 1/2" S.S. STRAINER ASSEMBLIES C/W 1 1/2" DRAIN

FAUCET
STRAIGHT ARM SPOUT WITH PULL-DOWN SPRAY SPOUT FAUCET: ANCONA LE DUO KITCHEN FAUCET MODEL No. AN-4103

STAINLESS COUNTERTOPS C/W BASE CABINET

- 16GA S.S. T304#4 TOP - 4" BOXED BACK RISER
- COUNTERTOP TO HAVE MARINE EDGE - FRONT & ENDS
- 18GA S.S. BASE AND INTERMEDIATE SHELVES
- INTERMEDIATE SHELVES TO BE ADJUSTABLE WITH STAINLESS PILASTER STRIPS AND CLIPS
- CABINET ENDS AND DIVIDERS TO BE 20GA S.S. T304#4 FINISH
- BACK PANEL - 20GA S.S. T304#4
- REINFORCING 16GA SATINCOAT C - SECTION, DOUBLE - FACE TAPE TO TOP (3 REQ'D)
- 16GA SATINCOAT OR GALVANIZED SUPPORT CHANNELS FOR BASE SHELF
- 1 5/8" OD - 16GA S.S. ORNAMENTAL TUBULAR LEGS
- S.S. ADJ. BULLET FEET
- 16GA S.S. T304#4 REMOVABLE S.S. KICK PLATE - FRONT & ENDS
- 16GA S.S. SKIRTING TO COVER FRONTS OF SINKS

STAINLESS DRAWERS

- DOUBLE PAN CONSTRUCTION - FRONT - 18GA S.S. T304#4
- 1" INSULATION BETWEEN PANS
- 16GA S.S. T304#4 DRAWER PAN x 8" DEEP FASTENED TO THE BACK PAN OF THE DRAWER FRONT
- STAINLESS DRAWER SLIDES x 20" LONG - FULL EXTENSION WEIGHT CAPACITY 80-100 lbs
- DRAWER HOUSING - 16GA S.S. T304#4
- FASTEN DRAWERS TO UNDERSIDE OF STAINLESS TOP

WALL MOUNTED SHELVES - CABINET STYLE

- 18GA S.S. T304#4 BODY, TOP AND SHELVES
- SHELVES TO BE ADJUSTABLE C/W S.S. PILASTER STRIP AND CLIPS

ISLAND S.S. TABLE

- 14GA S.S. T304#4 TOP
- REINFORCING 16GA SATINCOAT C - SECTION, DOUBLE - FACE TAPE TO TOP (3 REQ'D)
- 3"x3" SQUARE S.S. T304#4 TUBULAR LEGS x 16GA WALL ORNAMENTAL FINISH
- S.S. ADJ. LEVELLERS
- 1" DIA S.S. T304#4 - 16GA WALL ORNAMENTAL CROSS BRACES FRONT, BACK, AND SIDES - 15" DOWN

APPLIANCES
GAS RANGE
CAPITAL
36" WIDE, 4 OPEN BURNERS WITH CENTRE 12" GRILL/ GRIDDLE BURNER
MODEL: MCR364B

VENTILATION CANOPY
VENTAHOOD
48" WIDE (900 CFM)
MODEL: PRXH18-348

DISHWASHER
ASKO DISHWASHERS INC.
24" BUILT-IN - INTEGRATED HANDLE
MODEL: D5436XLS

NOTE:
1. APPROVED SUGGESTED SUPPLIER STAINLESS STEEL FABRICATOR CONTRACTOR - "STAINLESS CONCEPTS INC."
2. APPROVED SUGGESTED SUPPLIER EPOXY FLOOR CONTRACTOR - "BURR BUILDING"

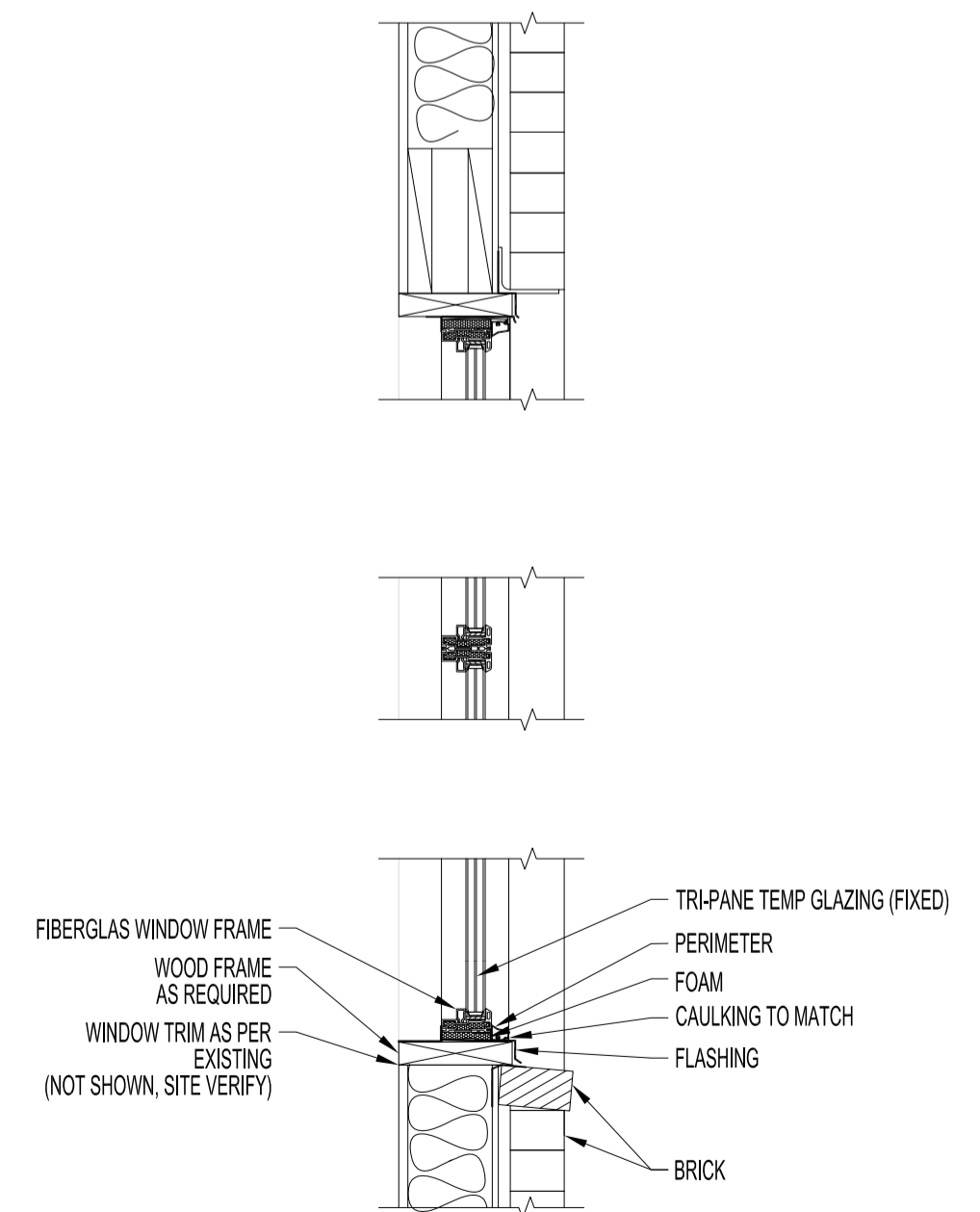
ROOM FINISH AND WINDOW SCHEDULES											
ROOM NO.	ROOM NAME	FLOOR	BASEBOARD	NORTH WALL	SOUTH WALL	EAST WALL	WEST WALL	CEILING	CEILING HEIGHT	WINDOW TYPE	NOTES
B01	STAIRS	TYPE 1	R.BB. 1							W4	
B02	MECHANICAL ROOM	TYPE 1	R.BB. 1							W4	
B03	WORK AREA	TYPE 1	R.BB. 1							W4	
B04	MISC ROOM	TYPE 1	R.BB. 1							W4	
B05	STORAGE ROOM	TYPE 1	R.BB. 1							W4	
M1	VESTIBULE	TYPE 1	R.BB. 1								
M2	CORRIDOR	TYPE 1	R.BB. 1								
M3	CONTROL	TYPE 1	R.BB. 1								
M4	OFFICE	TYPE 1	R.BB. 1							W1	
M5	DORMITORY	TYPE 1	R.BB. 1							W2	
M6	DORMITORY	TYPE 1	R.BB. 1							W2	
M7	SHOWERS	TYPE 1	R.BB. 1							W2	
M8	WASHROOM	TYPE 1	R.BB. 1								
M9	LOCKER	TYPE 1	R.BB. 1	PT-1		PT-1				W2	
M10	KITCHEN	TYPE 2	R.BB. 2	PT-1	PT-1	PT-1	PT-1	PT-1			PATCH & PAINT CEILING FROM MECHANICAL & ELECTRICAL WORK
M11	LOUNGEDINING	TYPE 2	R.BB. 2	PT-1	PT-1	PT-1	PT-2 P. LAM-1	PT-1		W3	PATCH & PAINT CEILING FROM MECHANICAL & ELECTRICAL WORK
M12	COAT	TYPE 1	R.BB. 1								
M13	VESTIBULE	TYPE 1	R.BB. 1								
M14	HOSE TOWER	TYPE 1	R.BB. 1								
M15	DRY HOSE STORAGE	TYPE 1	R.BB. 1								
M16	APPARATUS ROOM	TYPE 1	R.BB. 1								
M17	PIPE SPACE	TYPE 1	R.BB. 1								
M18	WASHROOM	TYPE 1	R.BB. 1								
M19	DORMITORY	TYPE 1	R.BB. 1							W2	
M20	STAIR	TYPE 1	R.BB. 1								

ABBREVIATIONS

TBD (TO BE DETERMINED)
R.BB. 1: EXISTING 4" GREY RUBBER BASEBOARD
R.BB. 2: NEW 4" GREY RUBBER BASEBOARD (SUBMIT SAMPLES)
PT-1: PAINT & COLOUR (TBD)
PT-2: CLOVERDALE PAINT CA 059 GRAIN
P. LAM-1: WAINSCOT TRIM BY ACROVYN, COLOUR - BLACK, 0.40" ACROVYN WALL COVERING (TBD) INSTALL AS PER MANUFACTURER'S INSTRUCTIONS.

WINDOW TYPES - ALL WINDOWS TO BE TRI-PANE, FIBERGLAS
APPROVED SUGGESTED SUPPLIER - "SILEX FIBERGLAS WINDOWS" OF WINNIPEG

W1: UPPER FIXED WITH LOWER 24" MINIMUM AWNING
W2: CASEMENT WITH RIGHT SIDE FIXED
W3: UPPER FIXED WITH LOWER 24" MINIMUM AWNING
W4: CASEMENT



SECTION FOR WINDOW TYPES "W1", "W2", "W3", "W4"
FIXED PANE SHOWN, CASEMENT & AWNING NOT SHOWN.
SCALE: 1" = 1'-0"

NOTES:

No.	REVISION/DESCRIPTION	BY	DATE
0	ISSUE FOR CONSTRUCTION	DTA	2017.11.15



DRAWN	CHECKED	DESIGNED	APPROVED
DATE 2017.10.19	USER APPROVAL		

THE CITY OF WINNIPEG
PLANNING, PROPERTY AND DEVELOPMENT DEPARTMENT
MUNICIPAL ACCOMMODATIONS DIVISION
3-65 GARRY STREET, R3C 4K4

PROJECT
WINNIPEG FIRE PARAMEDIC SERVICES
STATION No.16
INTERIOR RENOVATIONS
1001 MCGREGOR STREET BID OPP: 1013-2017

SHEET TITLE
SPECIFICATIONS, SCHEDULES
WINDOW SECTION

SCALE	PROJECT No:	SHEET No:
AS SHOWN	2016-009	A3