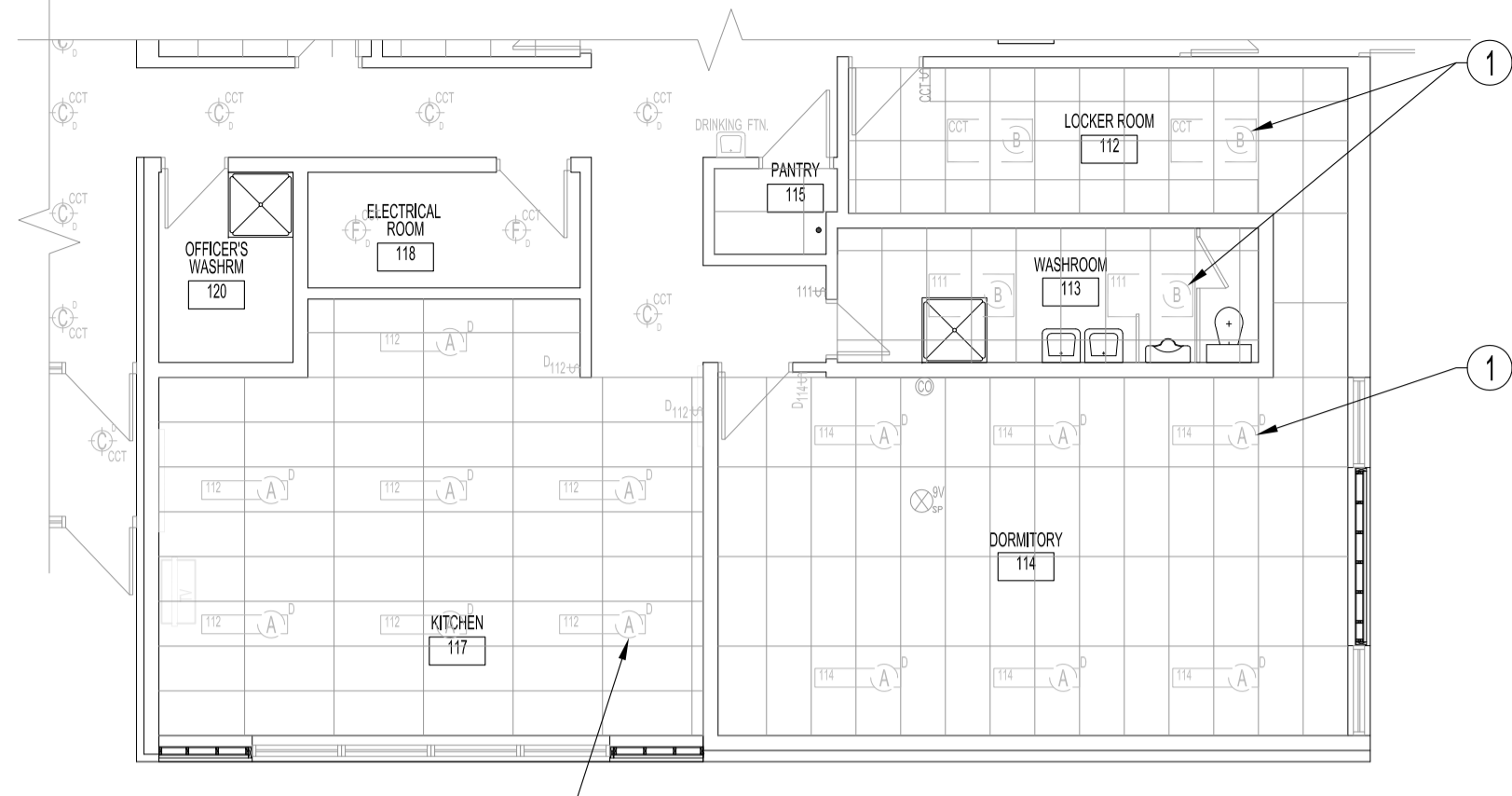
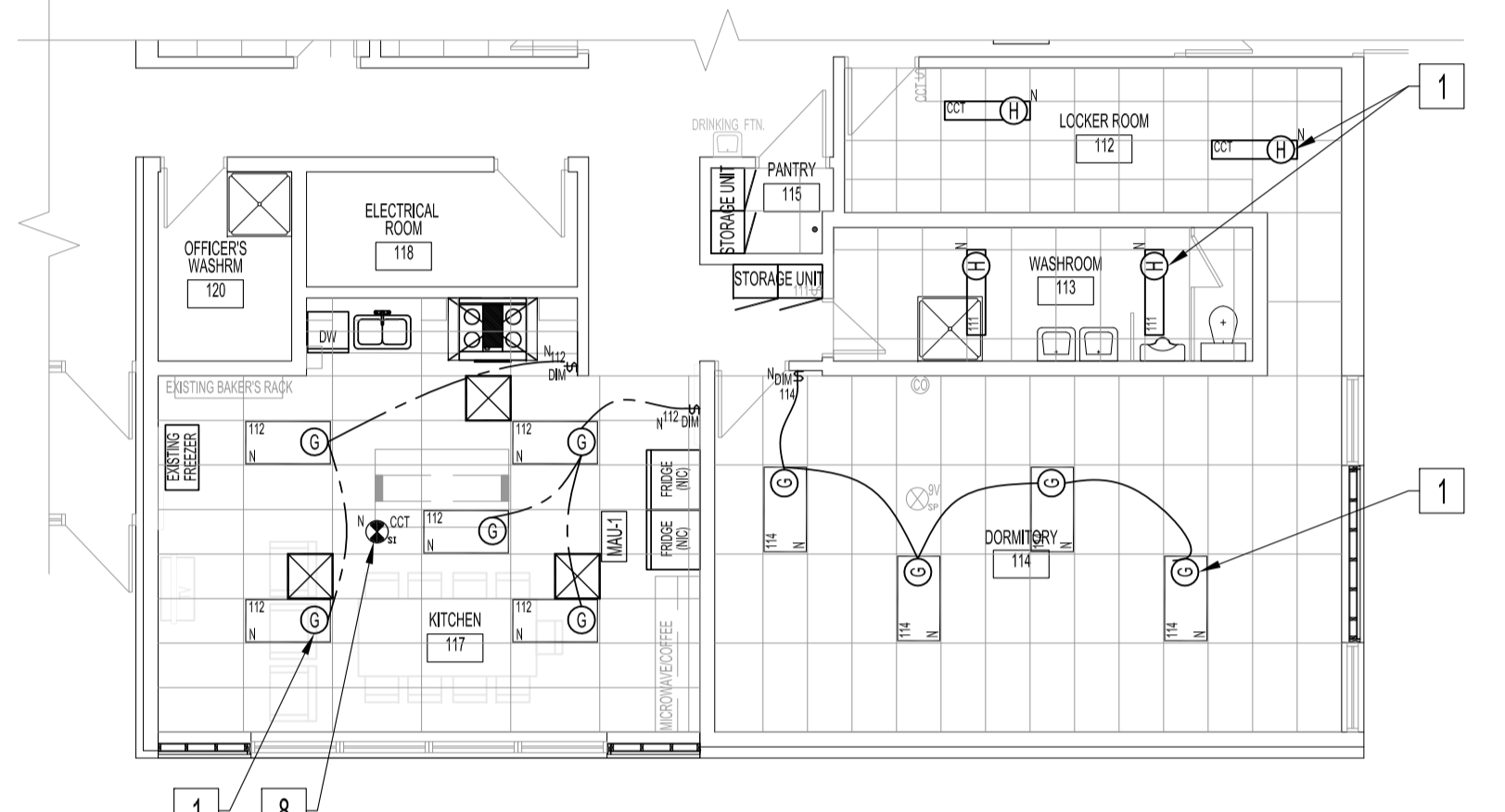


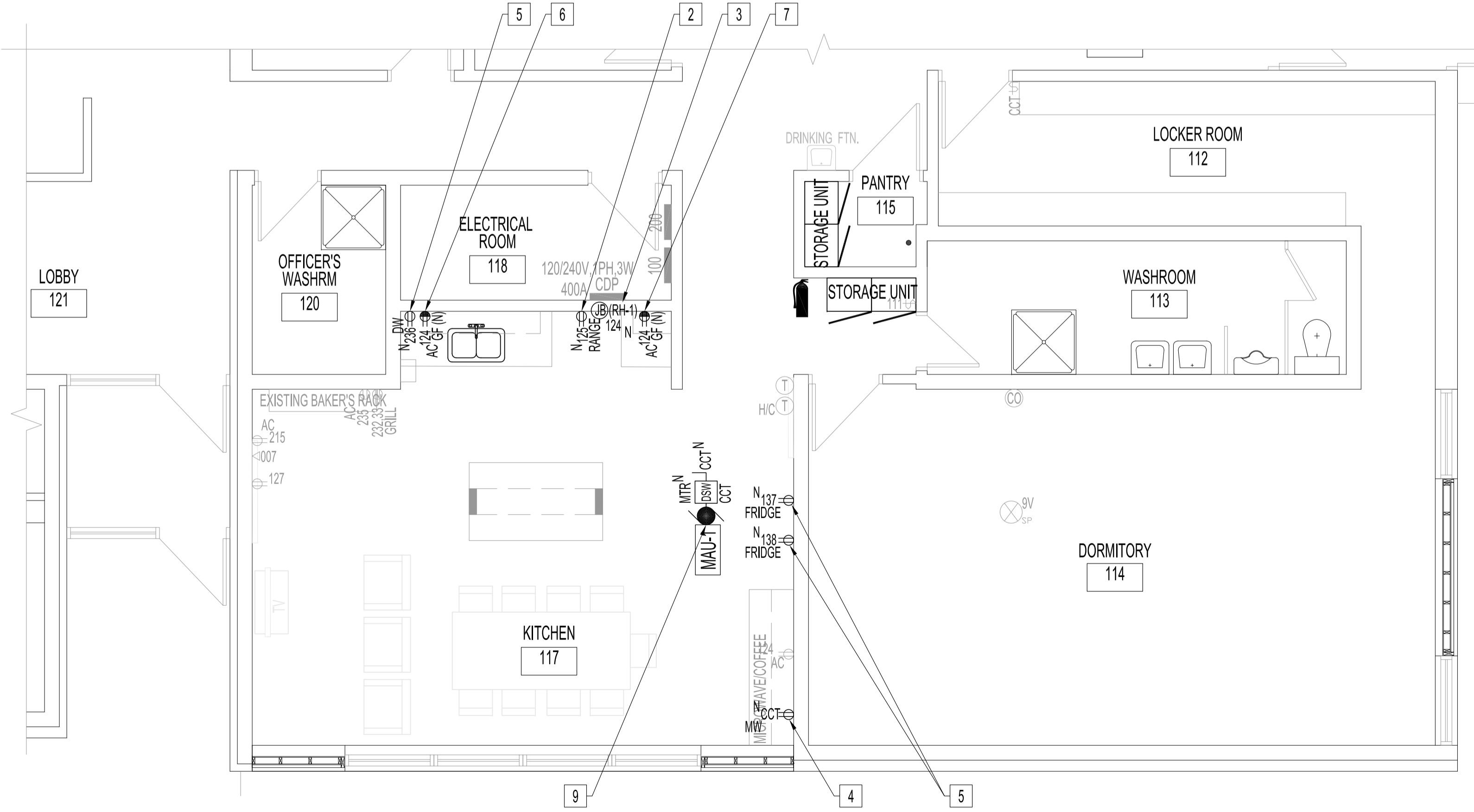
**DEMOLITION - MAIN FLOOR PLAN**  
SCALE: 1/8"=1'-0"



**DEMOLITION MAIN FLOOR REFLECTED CEILING PLAN**  
SCALE: 1/8"=1'-0"



**RENOVATION MAIN FLOOR REFLECTED CEILING PLAN**  
SCALE: 1/8"=1'-0"



**RENOVATION - PARTIAL MAIN FLOOR PLAN**  
SCALE: 1/4"=1'-0"

**ELECTRICAL POWER & SYSTEMS**

**DEMOLITION NOTES: "x"**

- ALSO SEE NOTES & SPECIFICATIONS.
1. REPLACE LUMINAIRES & LIGHT SWITCHES IN: KITCHEN, 117; LOCKER, 112; WASHROOM, 113; DORMITORY, 114. SEE RENOVATION NOTES.
  2. REMOVE RECEPTACLE & CIRCUIT BACK TO PANEL.
  3. RELOCATE RECEPTACLE & CIRCUIT, SEE RENOVATION NOTES.
  4. RELOCATE RECEPTACLE TO AC FOR MW DEDICATED CIRCUIT, SEE RENOVATION NOTE.
  5. RELOCATE RECEPTACLE LEFT OF NEW SINK, SEE RENOVATION NOTE.
  6. RELOCATE RECEPTACLE FOR RANGE RECEPTACLE, SEE RENOVATION NOTE.
  7. RELOCATE DW CIRCUIT TO NEW DW LOCATION, SEE RENOVATION NOTE.
  8. REMOVE DRINKING FOUNTAIN ELECTRICAL CONNECTION & CIRCUIT BACK TO SOURCE.

**ELECTRICAL POWER & SYSTEMS**

**RENOVATION NOTES: "x"**

- ALSO SEE NOTES & SPECIFICATIONS.  
ALL WIRING & CABLING IN CEILING SPACE SHALL BE IN EMT OR AC90 AS PER LATEST CEC. COORDINATE ALL RECEPTACLE OPENINGS WITH STAINLESS STEEL CABINET MANUFACTURER.
1. REPLACE LUMINAIRES & LIGHT SWITCHES IN KITCHEN, LOCKER (LUMINAIRE ONLY), WASHROOM (LUMINAIRE ONLY) & DORMITORY WITH TYPE SHOWN. WIRE TO NEW DIMMER SWITCH WITH 0-10V CONTROL.
  2. PROVIDE DEDICATED RANGE RECEPTACLE, 120V, 15A CIRCUIT, #12/2 RW90 IN EMT TO 15A-1P BREAKER. MOUNT HEIGHT TO ALLOW RANGE INSTALLATION.
  3. PROVIDE JUNCTION BOX BEHIND WIRE RANGE HOOD EXHAUST FAN, (RH-1) SEE MECHANICAL DRAWING, TO EXISTING CIRCUIT SHOWN.
  4. RELOCATE EXISTING MW RECEPTACLE CIRCUIT TO AC AS SHOWN. CHANGE TO NEW RECEPTACLE.
  5. PROVIDE DEDICATED APPLIANCE RECEPTACLES & CIRCUITS SHOWN, 120V, 15A CIRCUIT, #12/2 RW90 IN EMT TO 15A-1P BREAKER. CONFIRM LOCATIONS WITH CONTRACT ADMINISTRATOR.
  6. RELOCATED RECEPTACLE LEFT OF NEW SINK WITH NEW GFCI RECEPTACLE.
  7. PROVIDE AC GFCI RECEPTACLE, 120V, 15A CIRCUIT, #12/2 RW90 IN EMT TO 15A-1P BREAKER.
  8. PROVIDE CEILING-MOUNTED SMOKE DETECTOR, 120V WITH BATTERY BACK-UP. WIRE TO ADJACENT CIRCUIT.
  9. PROVIDE DISCONNECT SWITCH & 240V, 50A CIRCUIT, #6/3 RW90 IN EMT TO 50A-2P CIRCUIT BREAKER. USE CURRENT SENSOR ON MAU-1 TO INTERLOCK, MAU-1, WITH RANGE HOOD, RH-1, AS PER MANUFACTURER INSTRUCTIONS
  10. REINSTALL RECEPTACLES WITH NEW WIREMOLD SYSTEM, TBD, TO IMPROVE OPTICS.

No.	REVISION/DESCRIPTION	BY	DATE
0	ISSUE FOR CONSTRUCTION	DTA	2017.11.15



DRAWN	DATE	CHECKED	DESIGNED	APPROVED
	2017.10.23			

THE CITY OF WINNIPEG  
PLANNING, PROPERTY AND  
DEVELOPMENT DEPARTMENT  
MUNICIPAL ACCOMMODATIONS DIVISION  
3-65 GARRY STREET, R3C 4K4

PROJECT  
WINNIPEG FIRE PARAMEDIC SERVICES  
STATION No.8  
INTERIOR RENOVATIONS  
640 KIMBERLY AVENUE BID OPP: 1013-2017

SHEET TITLE  
MAIN FLOOR PLAN  
DEMOLITION AND RENOVATION  
POWER AND SYSTEMS

SCALE	PROJECT No:	SHEET No:
AS SHOWN	2016-008	E2