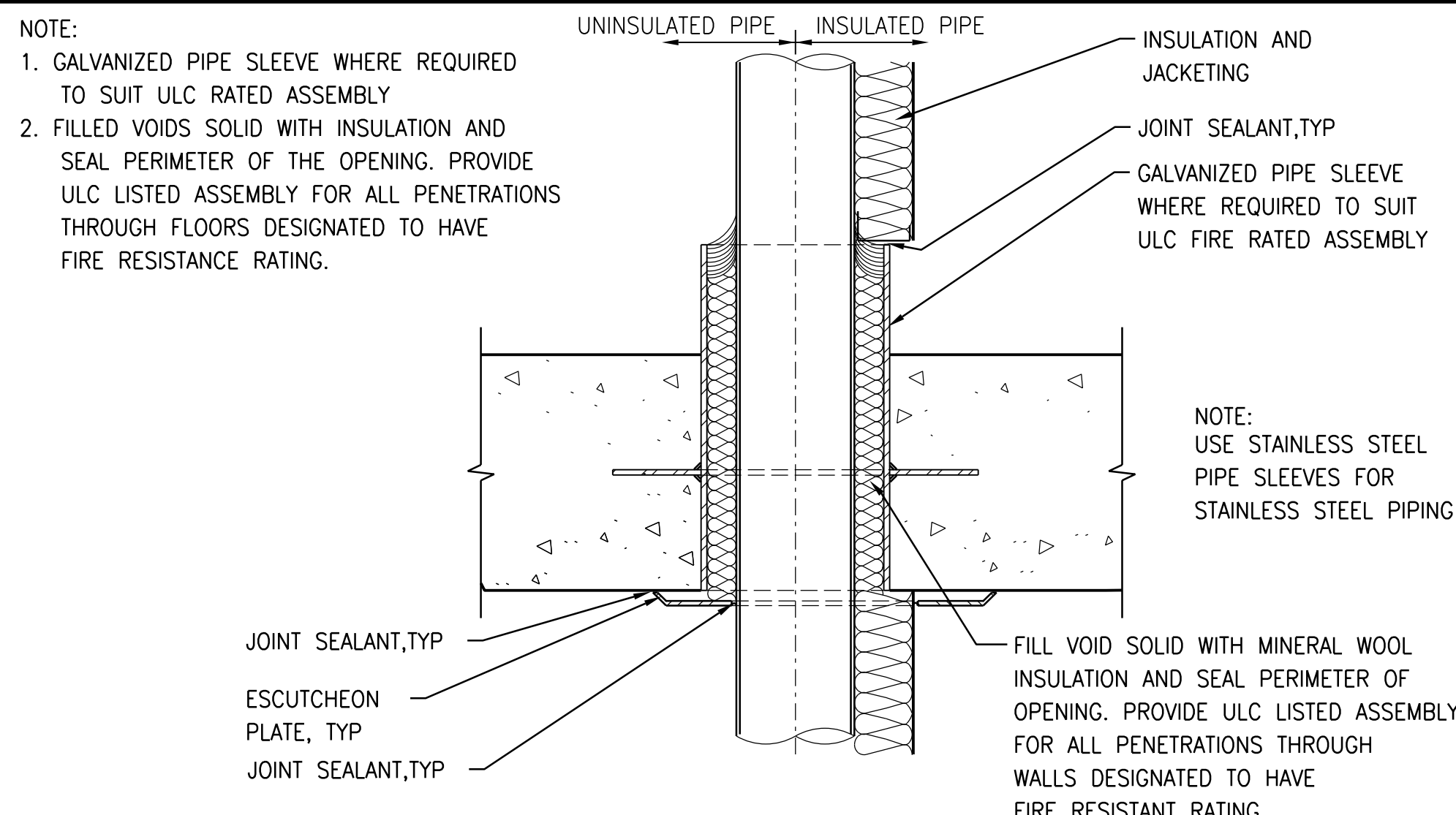
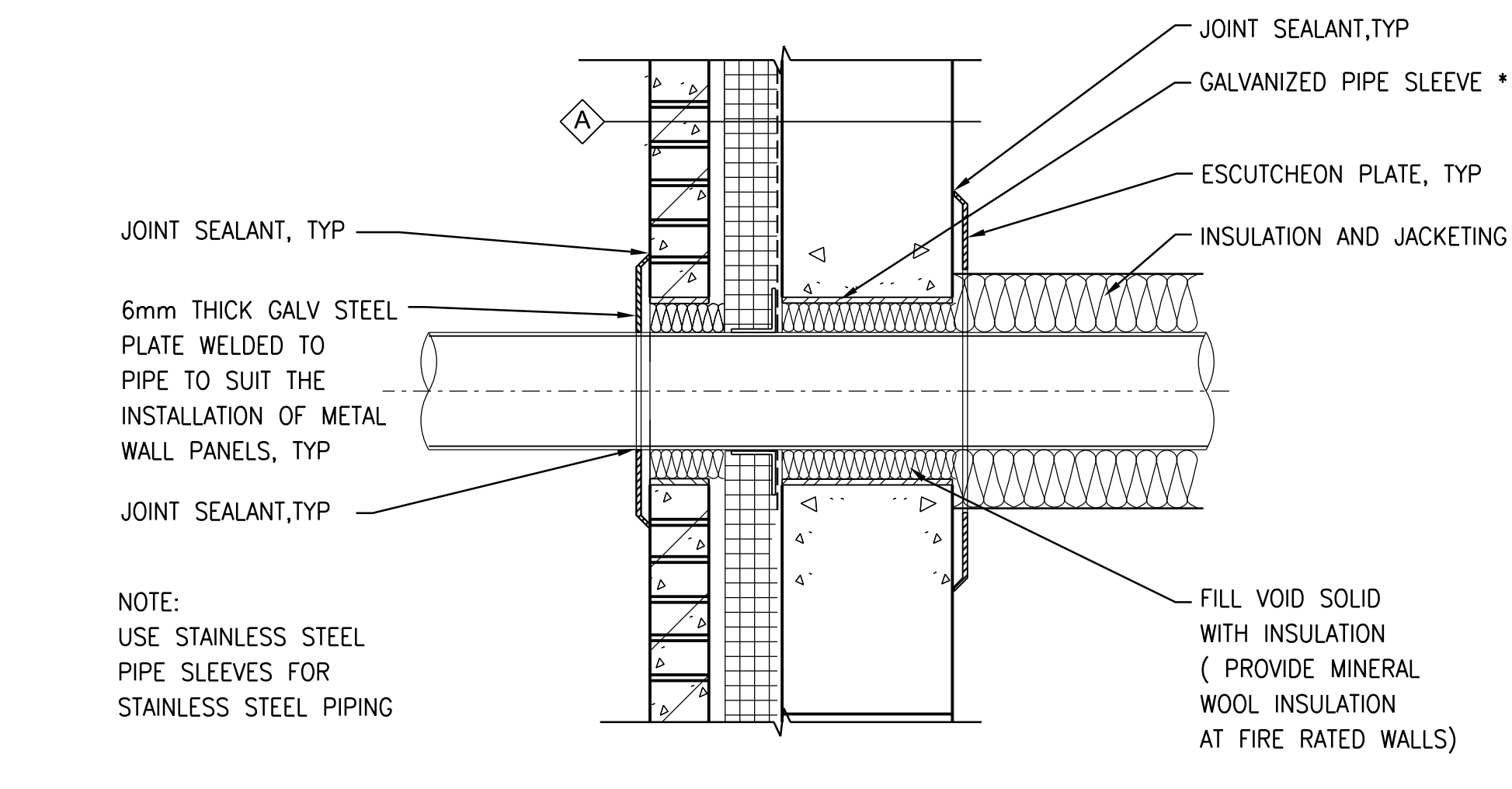


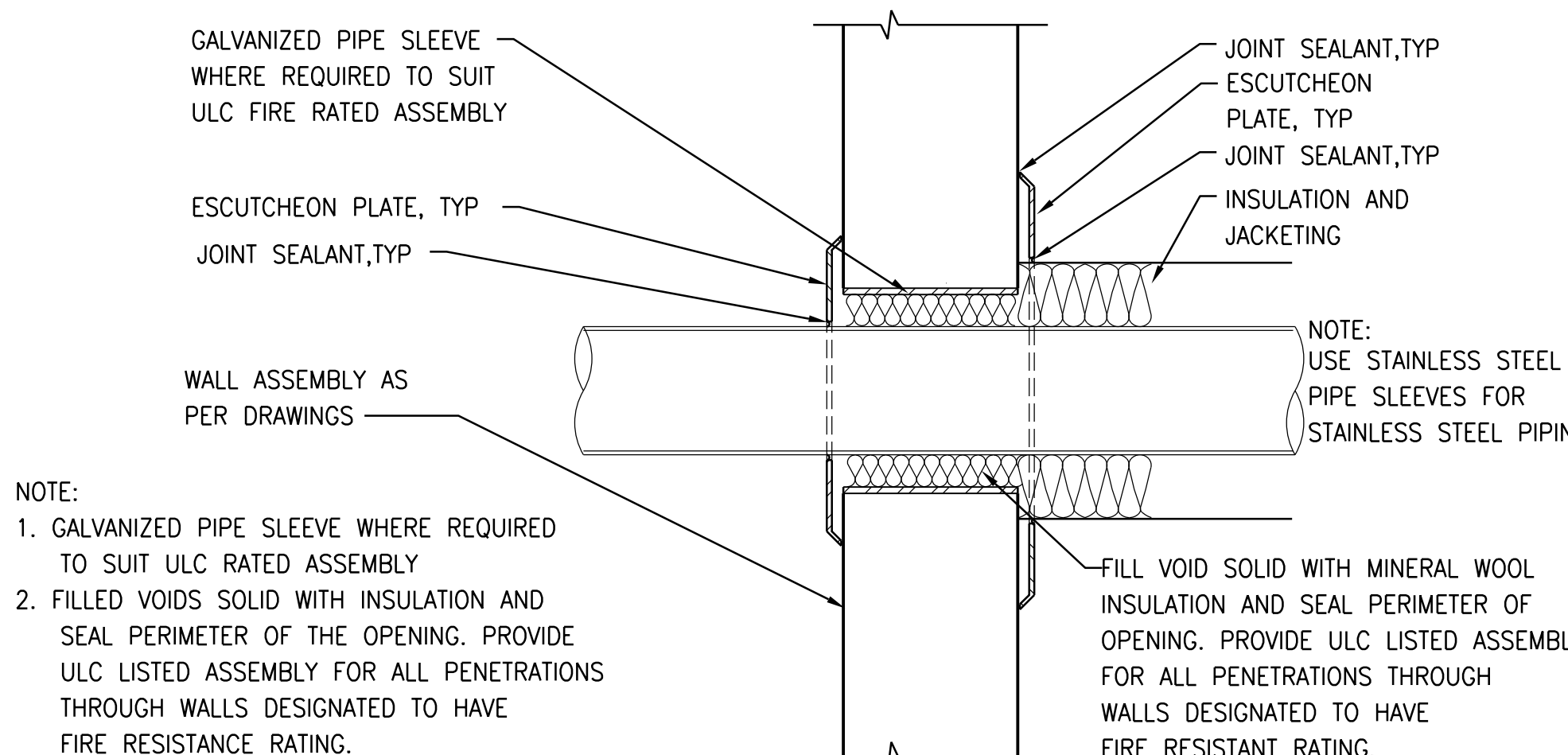
1 SECTION DETAIL-PIPE/DUCT THROUGH INTERIOR CMU WALL  
1:10



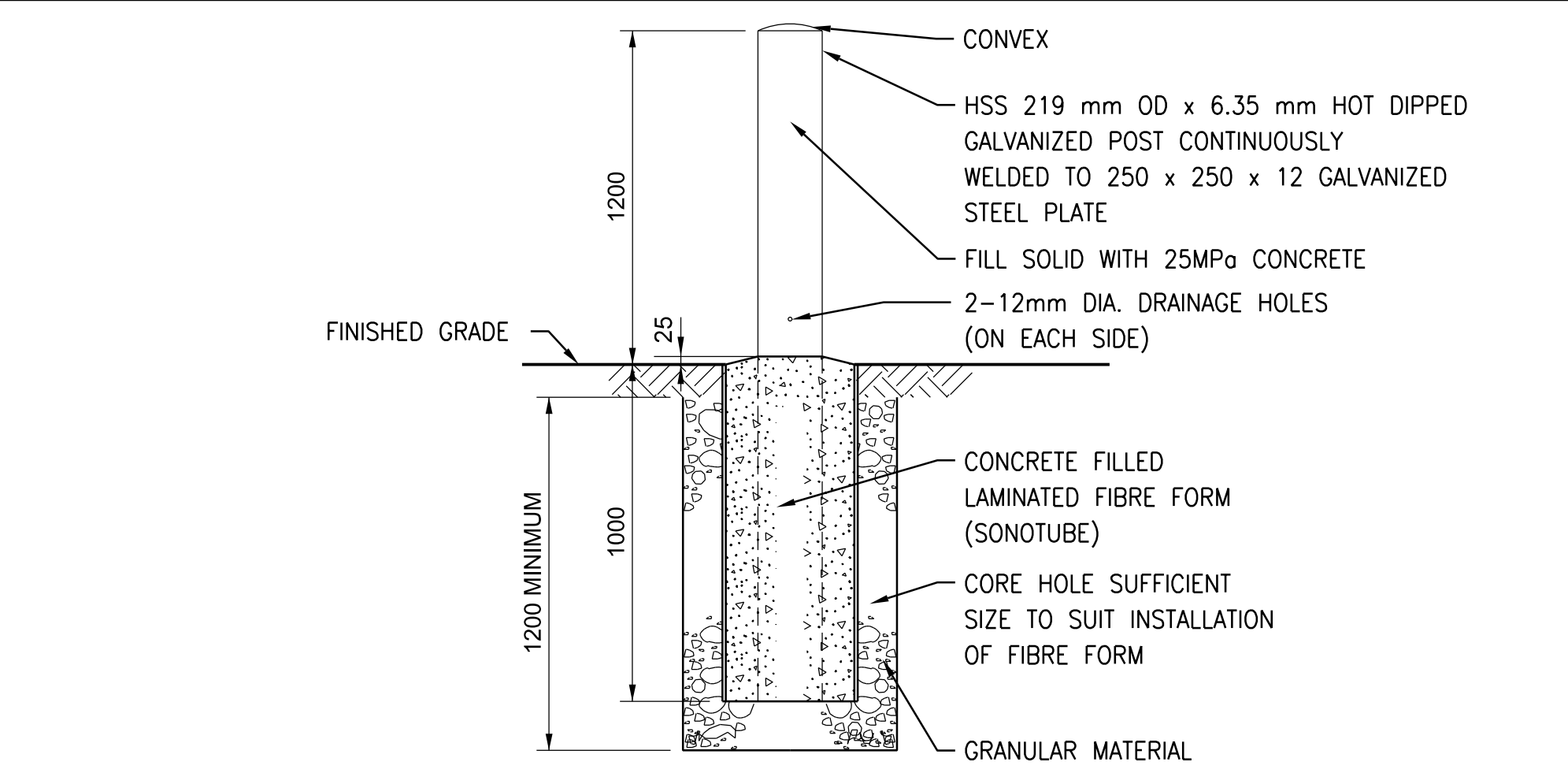
2 SECTION DETAIL-PIPE/DUCT THROUGH FLOOR  
1:10



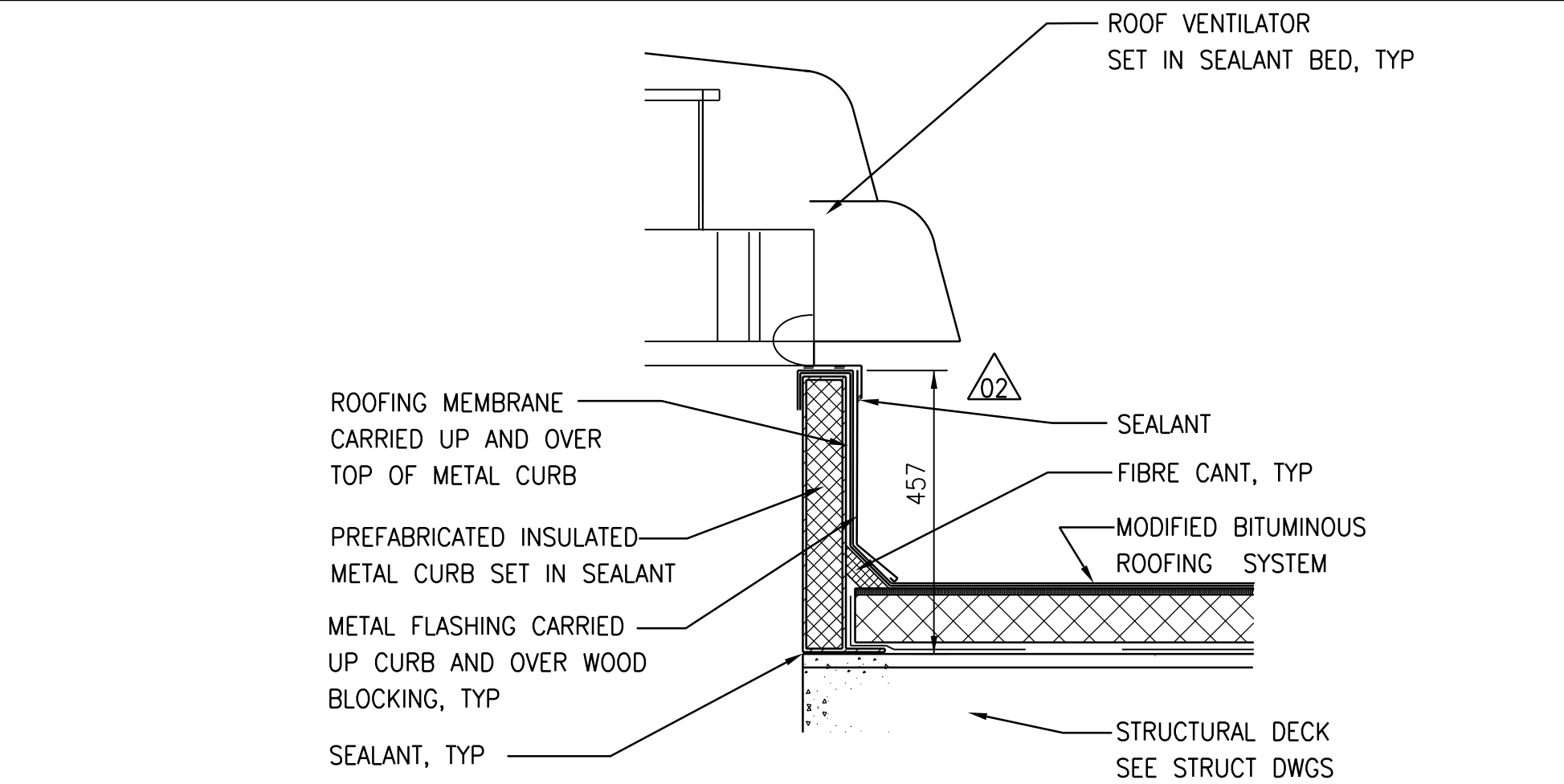
3 SECTION DETAIL- PIPE/DUCT THROUGH EXTERIOR WALL  
1:10



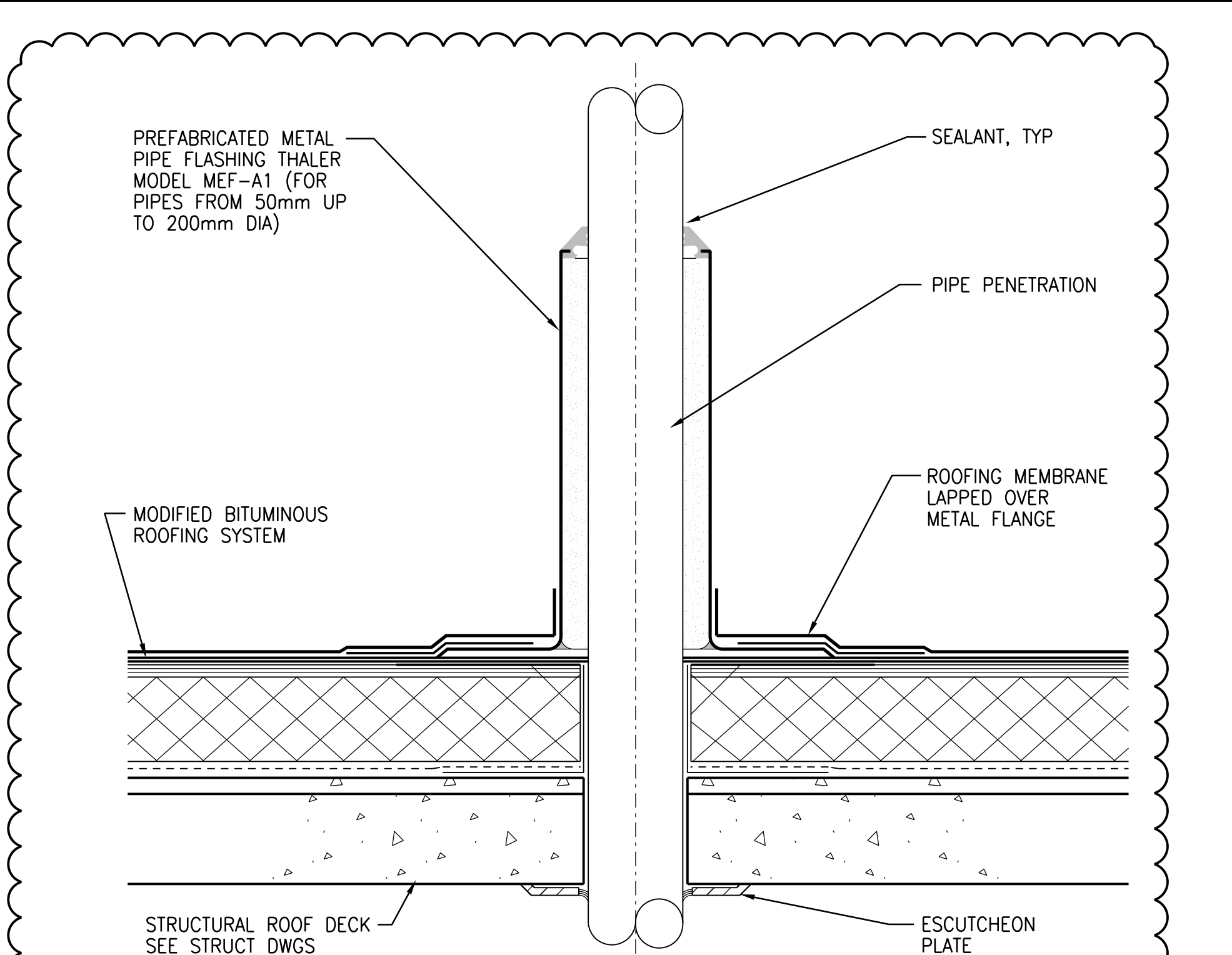
4 SECTION DETAIL- PIPE/DUCT THROUGH CONCRETE WALL  
1:10



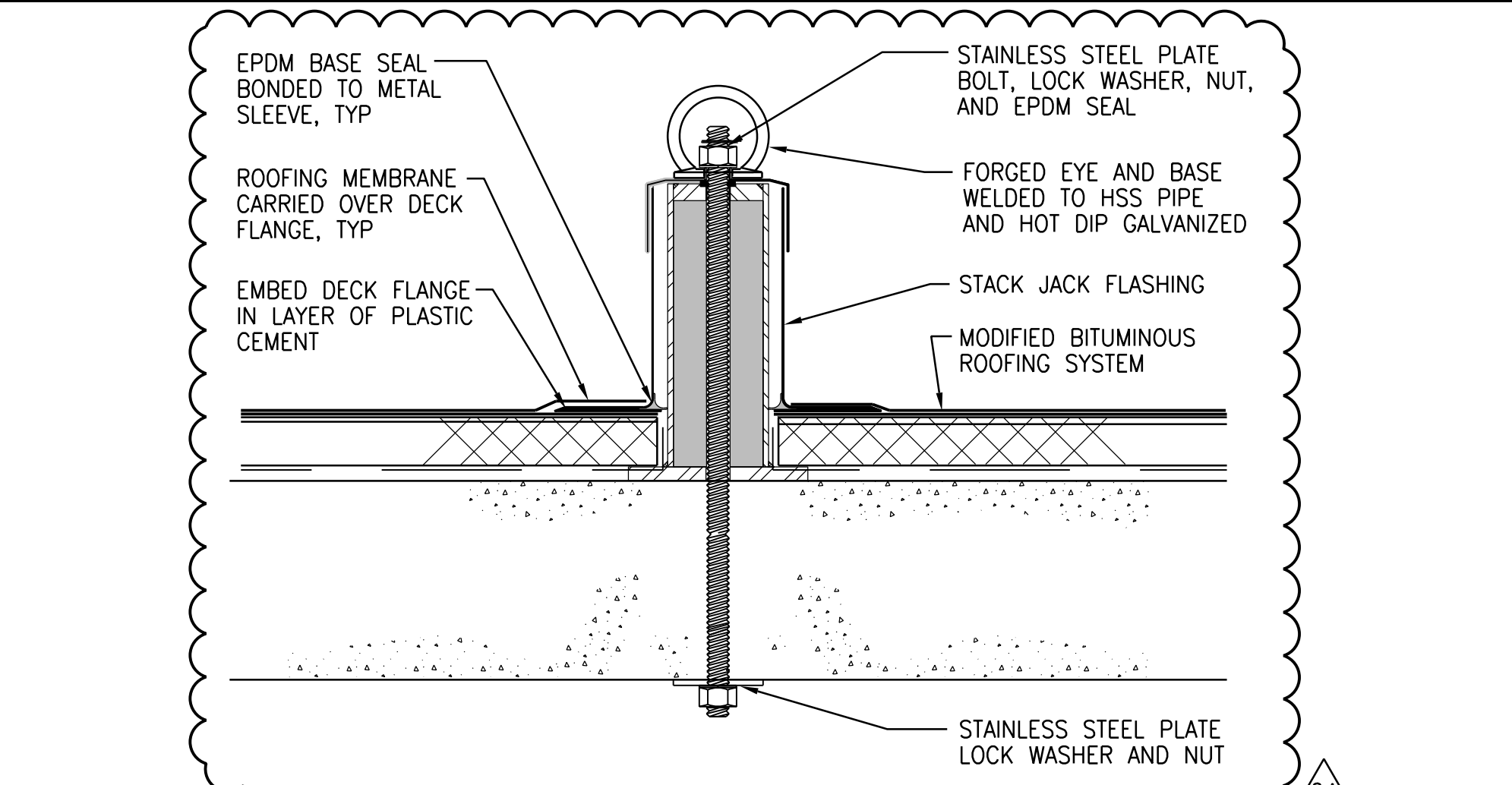
5 SECTION DETAIL- BOLLARD  
NTS



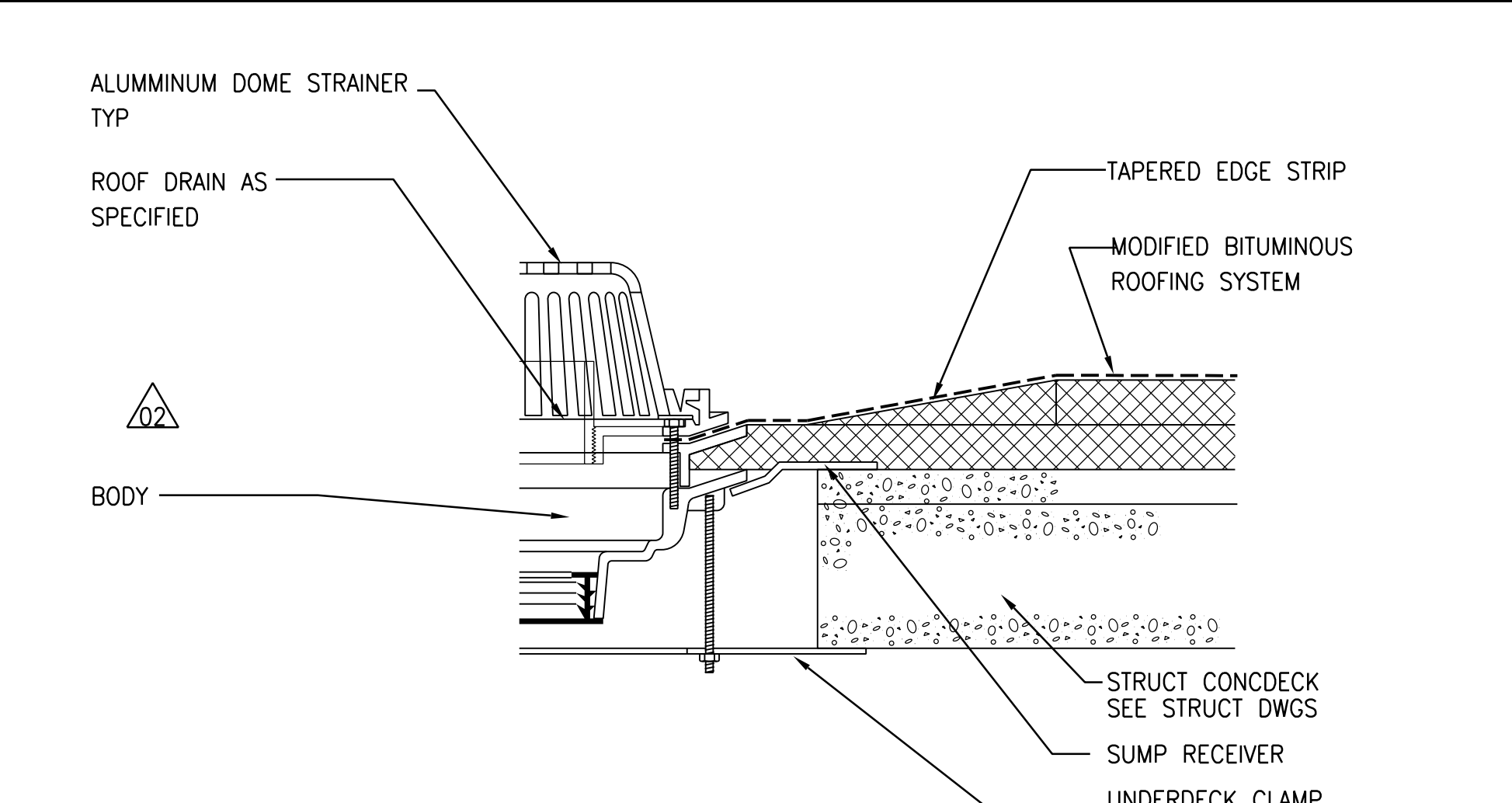
6 SECTION DETAIL- ROOF MOUNTED VENTILATOR  
1:10



7 SECTION DETAIL- PIPE PENETRATION THROUGH ROOF (PIPE/CONDUIT SMALLER THAN 200mm)  
1:5



8 SECTION DETAIL- ROOF FALL ARREST ANCHOR  
NTS



9 SECTION DETAIL- ROOF DRAIN  
1:5

**APEGM**  
Certificate of Authorization  
CH2M HILL Canada Ltd.  
No. 1441

NO.	REVISIONS	DATE	DESIGN	CHECK
04	ISSUED FOR ADDENDUM 6 - 976-2016	2017/07/19	R.B.	J.C.
03	ISSUED FOR CONSTRUCTION - 976-2016	2017/04/05	R.B.	J.C.
02	ISSUED FOR 90% PRELIMINARY REVIEW	09/2016	R.B.	J.C.
01	ISSUED FOR CONSTRUCTION	10/2015	N.B.	J.C.
00	ISSUED FOR TENDER	08/2015	N.B.	J.C.

CH2MHILL CANADA Architects Inc.	
DESIGNED BY: R. ZAKKO	CHECKED BY: B. KOLIS-HUPA
DRAWN BY: N. BOYCHUK	APPROVED BY: H.T. FREIHAMMER
SCALE: AS SHOWN	ISSUED FOR CONSTRUCTION
DATE: 2017/04/05	DATE: 2017/04/05
CONSULTANT NO.: 474248	



<b>THE CITY OF WINNIPEG</b> WATER AND WASTE DEPARTMENT SOUTH END WATER POLLUTION CONTROL CENTRE SEWCC UPGRADING/EXPANSION PROJECT BUILDING STANDARD DETAILS (1)		
CITY DRAWING NUMBER 1-0102-BDTL-A003	SHEET 04	REV. SIZE A1