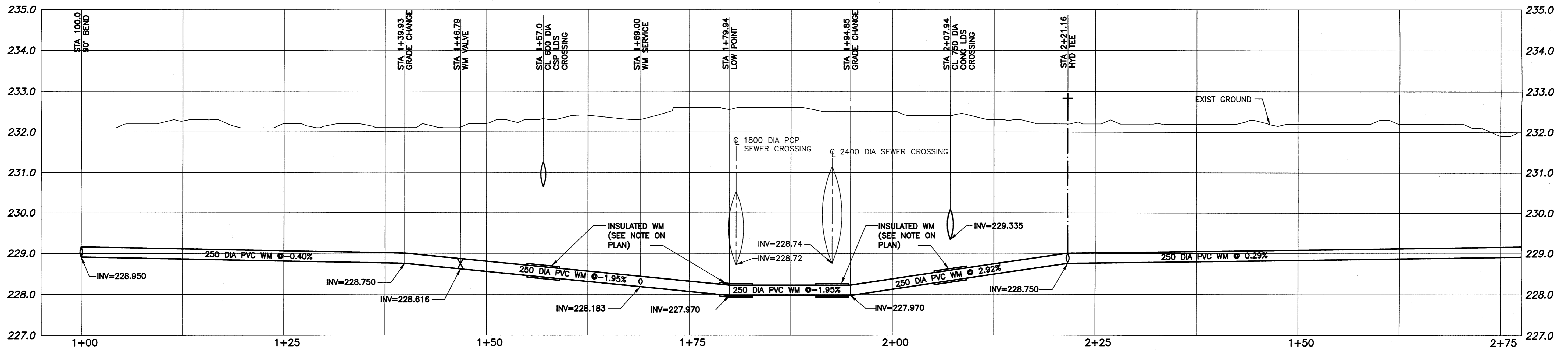
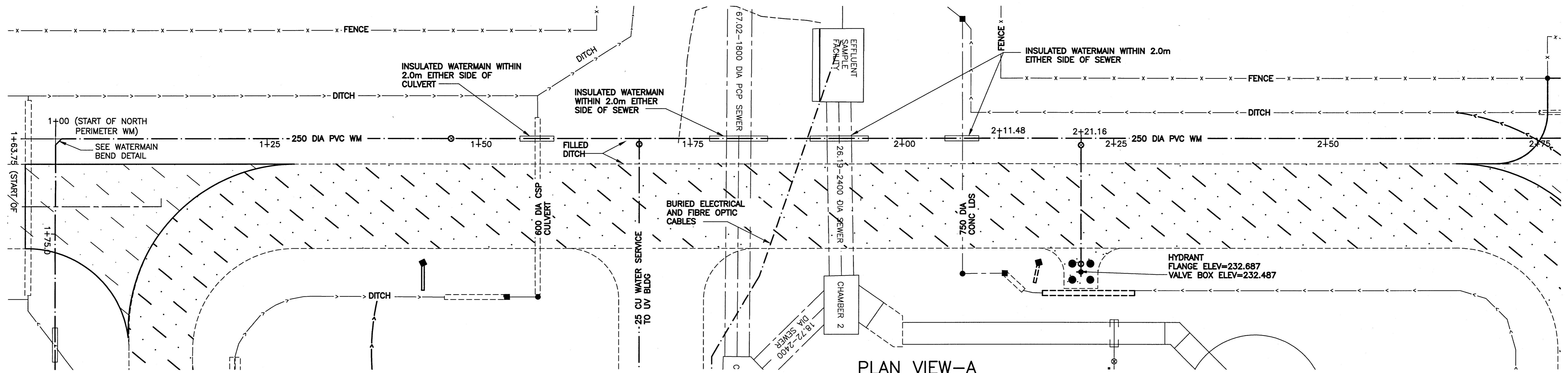


South End Water Pollution Control
Centre (SEWPCC) Upgrading/
Expansion Project:
Issued for Construction

Appendix HH
Bid Opportunity 333-2014 As-Builts

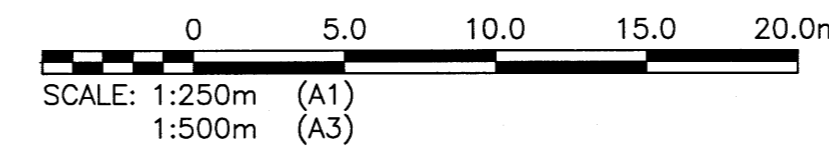


PROFILE VIEW-A
SCALE: 1:250



PLAN VIEW-A
SCALE: 1:250

WATERMAIN LAYOUT CO-ORDINATES			
STATION	EASTING (X)	NORTHING (Y)	REMARKS
1+00	636718.571	5517320.294	90° BEND
1+46.79	636695.715	5517361.118	WM VALVE
1+69.0	636684.862	5517380.499	WM SERVICE TIE-IN
2+21.16	636659.381	5517426.012	FIRE HYDRANT TEE
2+21.16	636673.181	5517433.738	FIRE HYDRANT

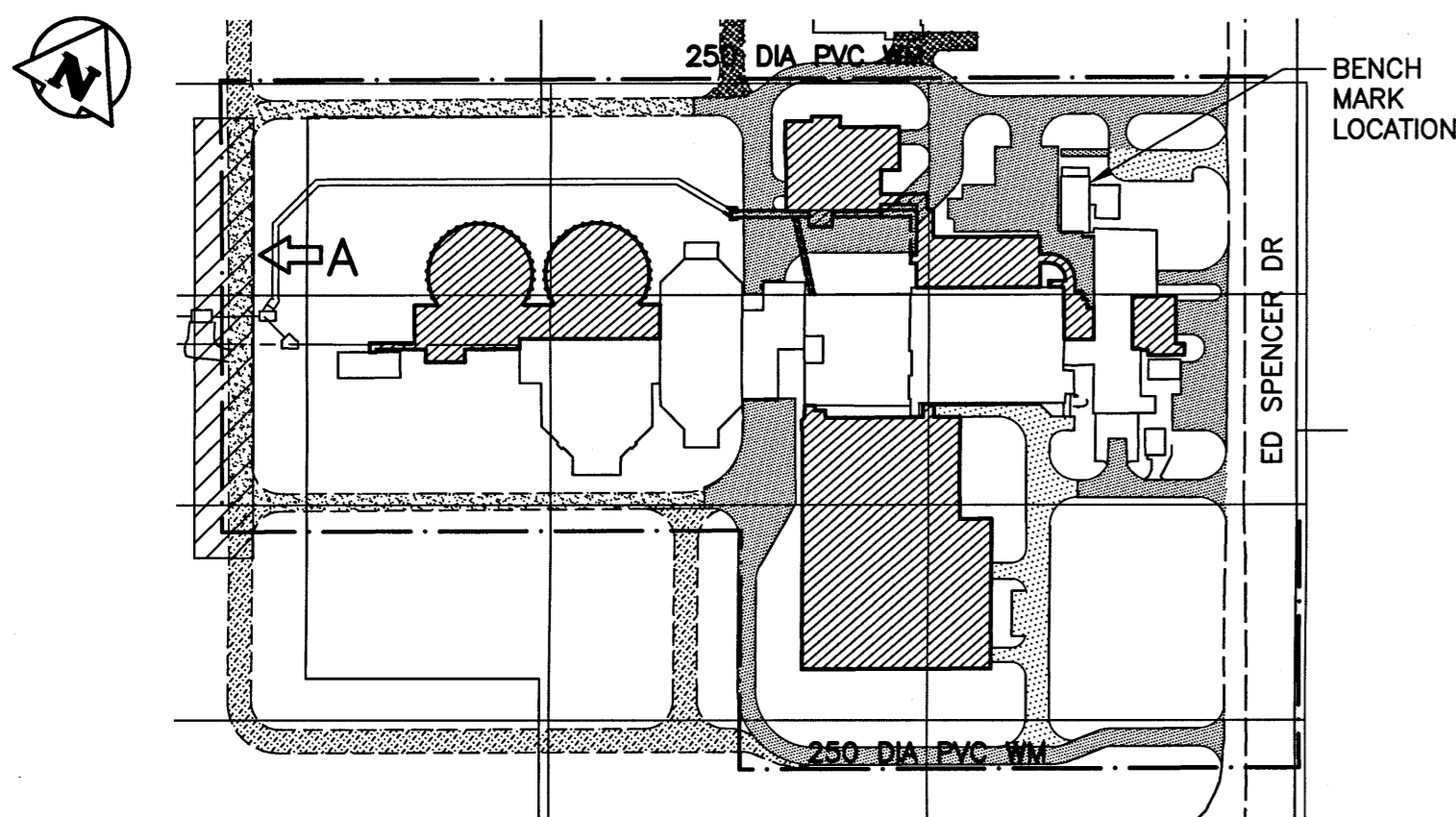


WATERMAIN DRAWING NOTES

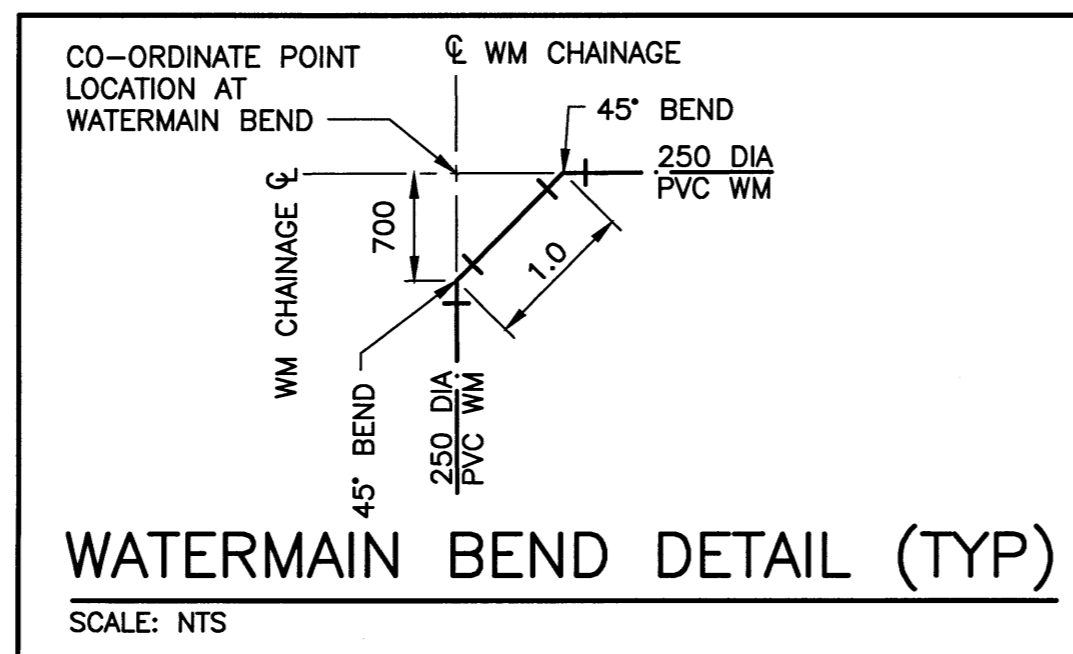
- NOTES:
- ALL WORK PERFORMED IN ACCORDANCE WITH THE CITY OF WINNIPEG STANDARD CONSTRUCTION SPECIFICATIONS.
 - ALL NEW WATERMAIN AND SERVICE CONNECTIONS INSTALLED WITH MINIMUM 2.4 METRES OF COVER OR ARE INSULATED AS NOTED.
 - ALL PIECES OF EXISTING MUNICIPAL INFRASTRUCTURE REMOVED OR ABANDONED WERE IDENTIFIED IN GREATER DETAIL ON DRAWINGS 1-0102-CGAD-A006 SHEETS 001 THROUGH 012.

AS-BUILT

THESE AS-BUILT DOCUMENTS HAVE BEEN PREPARED BASED ON INFORMATION PROVIDED BY OTHERS. THE DESIGN PROFESSIONAL HAS NOT VERIFIED THE ACCURACY AND/OR THE COMPLETENESS OF THIS INFORMATION AND SHALL NOT BE RESPONSIBLE FOR ANY ERRORS OR OMISSIONS WHICH MAY BE INCORPORATED HEREIN AS A RESULT.



LOCATION PLAN



WATERMAIN BEND DETAIL (TYP)
SCALE: NTS

LEGEND			LEGEND		
ITEM	EXISTING	NEW	ITEM	EXISTING	NEW
WM	—	—	CAS	—	—
WM VALVE	⊗	⊗	DITCH	—	—
WM HYDRANT	⊕	⊕	FENCE	—	—
SEWER	—	—	SIGN	—	—
SEWER MH	○	○	BOLLARD	○	○
SEWER CB	□	□	TREE	○	○
MTS	—	—	BUSH	—	—
MTS MH	○	○	ELEVATION	233.240	233.450
HYDRO	—	—	CULVERT	—	—
HYDRO LS	—	—			
HYDRO POLE	●	●			

B.M. BRASS PLATE LOCATED IN GRADE BEAM OF ADMINSTRATOR BUILDING ELEV. 234.059

NO.	REVISIONS	DATE	DESIGN	CHECK
03	AS-BUILT DRAWING - B.O. 333-2014	01/2017	EMS	BJM
02	ISSUED FOR CONSTRUCTION	08/2014	EMS	BJM
01	ISSUED FOR ADDENDUM NO.1	07/2014	EMS	BJM
00	ISSUED FOR TENDER	06/2014	EMS	BJM

CH2MHILL

DESIGNED BY: EMS
CHECKED BY: BJM

DRAWN BY: DMW
APPROVED BY: RUH

SCALE: AS NOTED
DATE: 2014/06/27
DATE: 2014/08/14

CONSULTANT NO.: 13-0338-002

ENGINEER'S SEAL

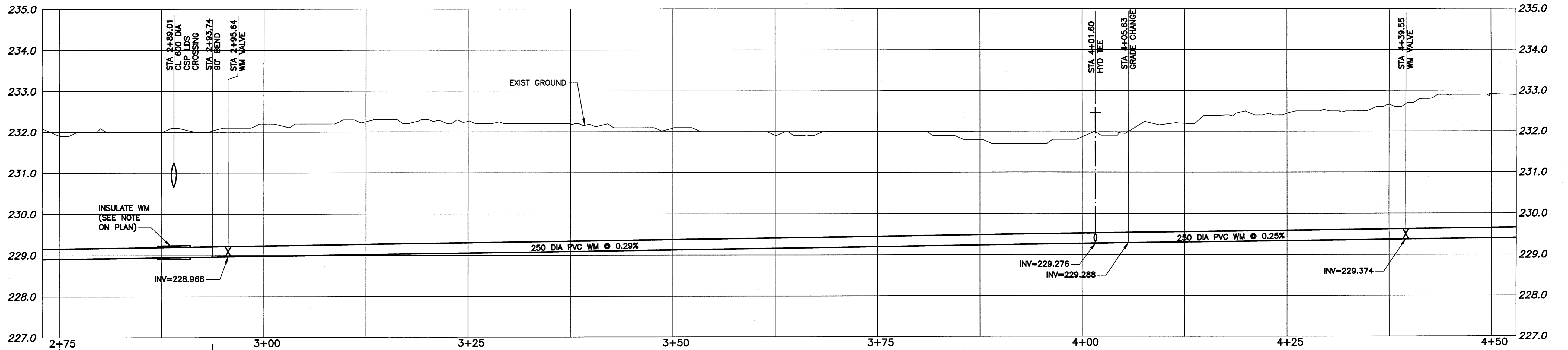
THE ORIGINAL ISSUE REV. 0 WAS STAMPED, DATED AND SIGNED BY: B.J. MIKOLAYENKO, P.ENG ON 2014/06/25

THE CITY OF WINNIPEG
WATER AND WASTE DEPARTMENT

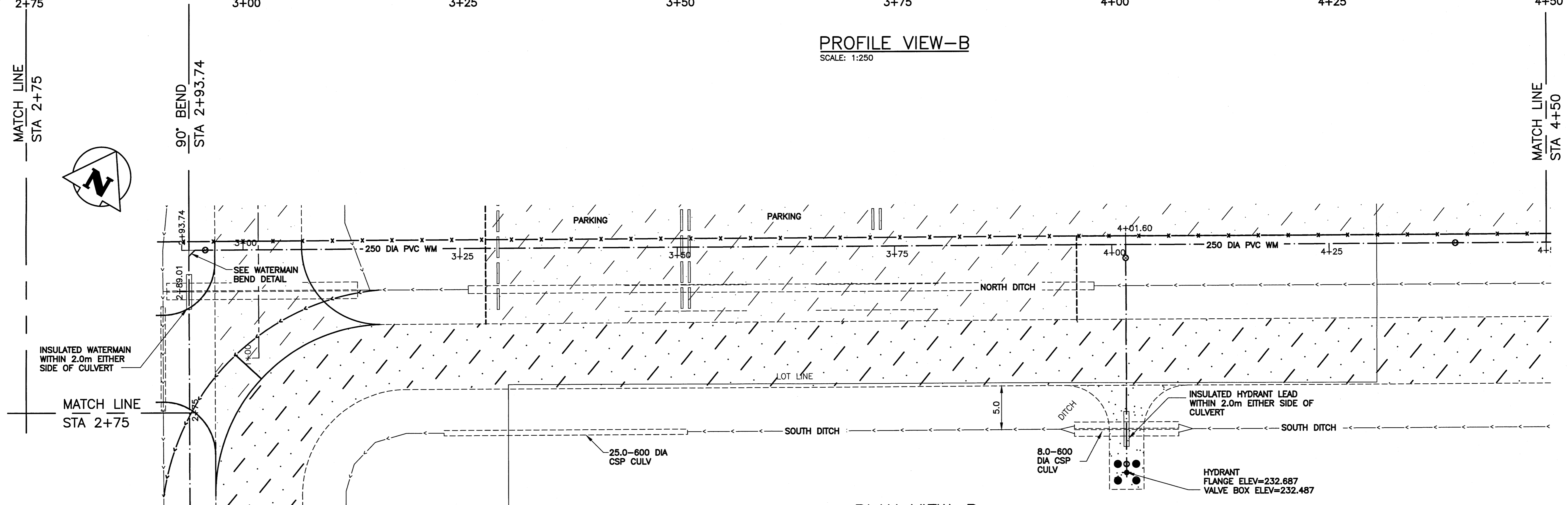
SOUTH END WATER POLLUTION CONTROL CENTRE
SEWPCC UPGRADE/EXPANSION PROJECT
CML

WATERMAIN NORTH
STA 1+00 TO STA 2+75

CITY DRAWING NUMBER: 1-0102-CUTY-Y006
SHEET: 001
REV: 03
SIZE: A1



PROFILE VIEW-B
SCALE: 1:250

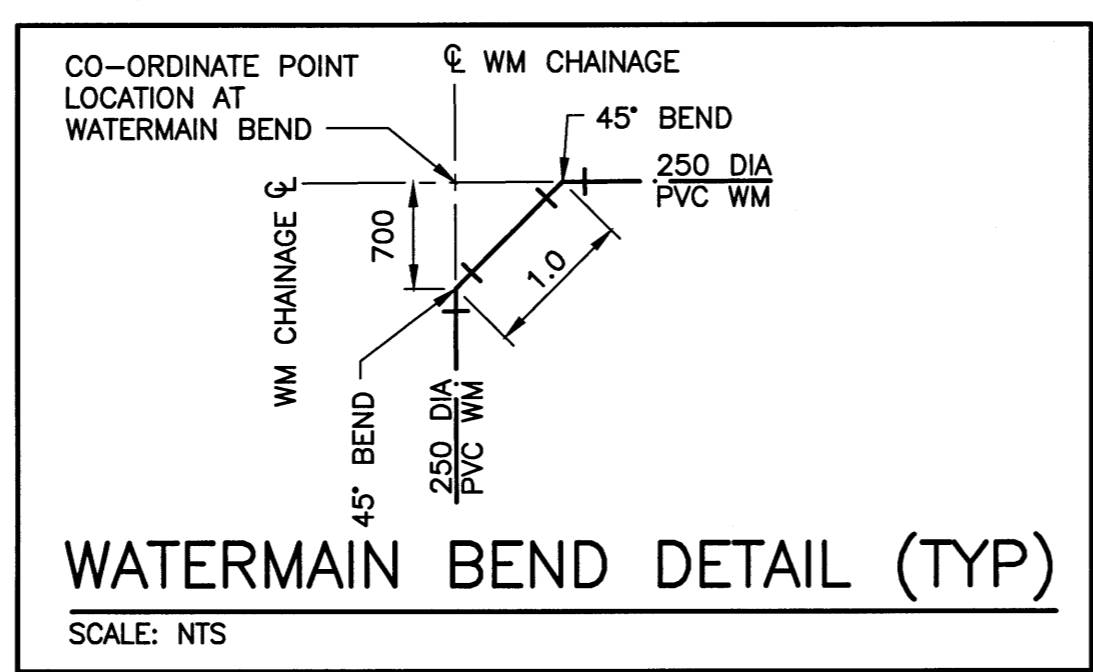


PLAN VIEW-B
SCALE: 1:250

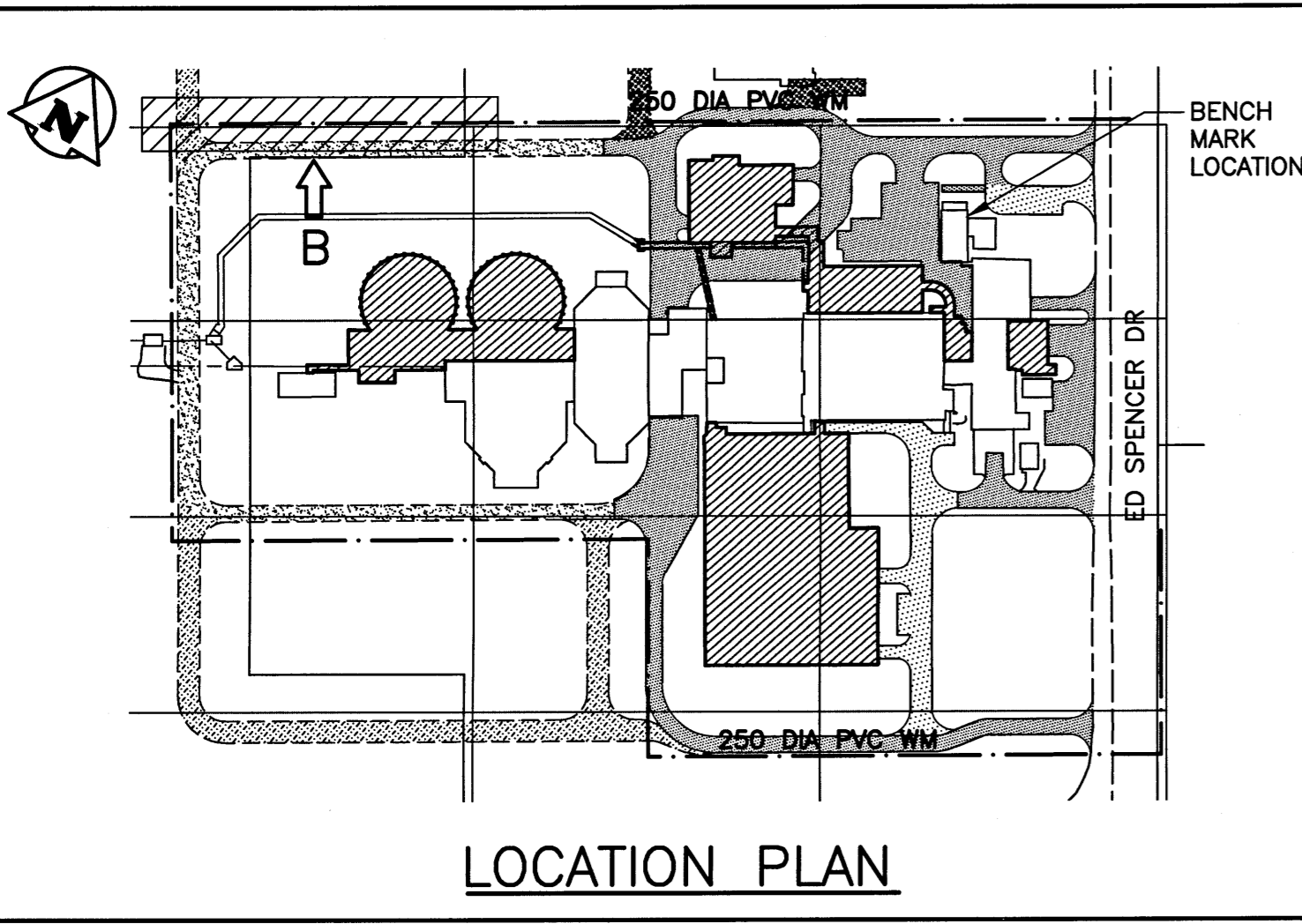
WATERMAIN LAYOUT CO-ORDINATES			
STATION	EASTING (X)	NORTHING (Y)	REMARKS
2+93.74	636623.921	5517489.354	90° BEND
2+89.01	636626.233	5517485.216	600 DIA CULVERT
2+95.64	636625.576	5517490.272	WM VALVE
4+01.60	636718.033	5517542.038	FIRE HYDRANT TEE
4+01.60	636730.855	5517519.136	FIRE HYDRANT
4+39.55	636751.144	5517560.577	WM VALVE

AS-BUILT
THESE AS-BUILT DOCUMENTS HAVE BEEN PREPARED BASED ON INFORMATION PROVIDED BY OTHERS. THE DESIGN PROFESSIONAL HAS NOT VERIFIED THE ACCURACY AND/OR THE COMPLETENESS OF THIS INFORMATION AND SHALL NOT BE RESPONSIBLE FOR ANY ERRORS OR OMISSIONS WHICH MAY BE INCORPORATED HEREIN AS A RESULT.

WATERMAIN DRAWING NOTES
NOTES:
1. ALL WORK PERFORMED IN ACCORDANCE WITH THE CITY OF WINNIPEG STANDARD CONSTRUCTION SPECIFICATIONS.
2. ALL NEW WATERMAIN AND SERVICE CONNECTIONS HAVE MINIMUM 2.4 METRES OF COVER OR ARE INSULATED AS NOTED.
3. ALL PIECES OF EXISTING MUNICIPAL INFRASTRUCTURE REMOVED OR ABANDONED WERE IDENTIFIED IN GREATER DETAIL ON DRAWINGS 1-0102-CGAD-A006 SHEETS 001 THROUGH 012.



LEGEND							
ITEM	EXISTING	NEW	ABANDONED	ITEM	EXISTING	NEW	ABANDONED
WM VALVE	⊗	⊕	⊖	GAS	- - - -	- - - -	- - - -
WM HYDRANT	⊕	⊕	⊖	DITCH	- - - -	- - - -	- - - -
SEWER	- - - -	- - - -	- - - -	FENCE	- - - -	- - - -	- - - -
SEWER MH	○	●	○	SIGN	⊙	⊙	⊙
SEWER CB	□	■	□	BOLLARD	⊙	⊙	⊙
MTS	- - - -	- - - -	- - - -	TREE	⊙	⊙	⊙
MTS MH	○	●	○	BUSH	⊙	⊙	⊙
HYDRO	- - - -	- - - -	- - - -	ELEVATION	233.240	233.450	233.450
HYDRO LS	○	●	○	CULVERT	- - - -	- - - -	- - - -
HYDRO POLE	●	●	○				



B.M. BRASS PLATE LOCATED IN GRADE BEAM OF ADMINISTRATION BUILDING ELEV. 234.059			
03	AS-BUILT DRAWING - B.O. 333-2014	01/2017	EMS BJM
02	ISSUED FOR CONSTRUCTION	08/2014	EMS BJM
01	ISSUED FOR ADDENDUM NO.1	07/2014	EMS BJM
00	ISSUED FOR TENDER	06/2014	EMS BJM

CH2MHILL
SNC-LAVALIN
KGS GROUP

DESIGNED BY: EMS
CHECKED BY: BJM
DRAWN BY: DMW
APPROVED BY: RJH

SCALE: AS NOTED
DATE: 2014/06/27
RELEASED FOR CONSTRUCTION BY: T. TURZAK
DATE: 2014/08/14

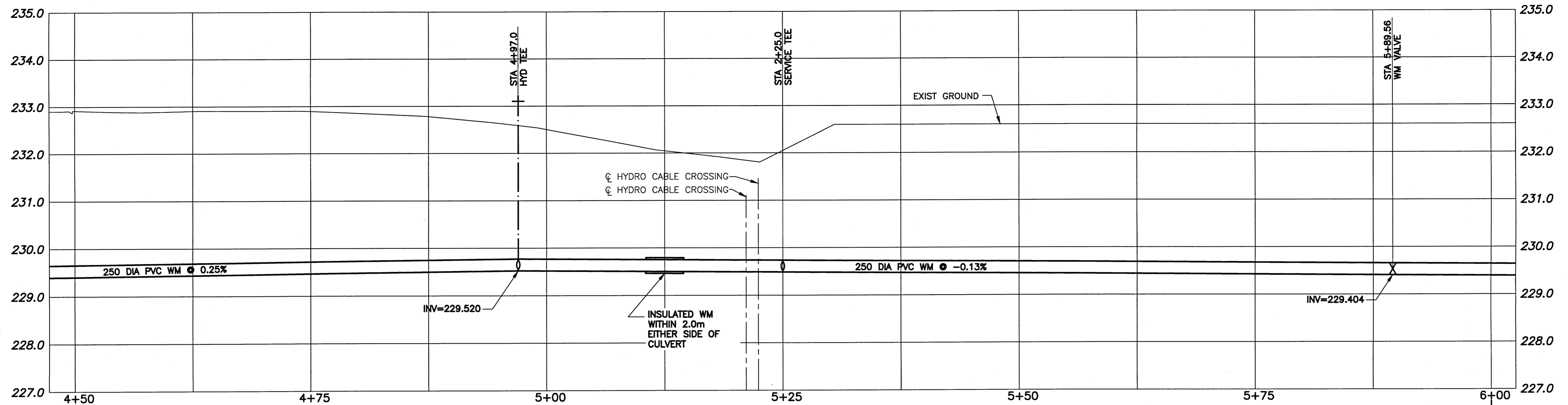
CONSULTANT NO.: 13-0338-002

THE CITY OF WINNIPEG
WATER AND WASTE DEPARTMENT

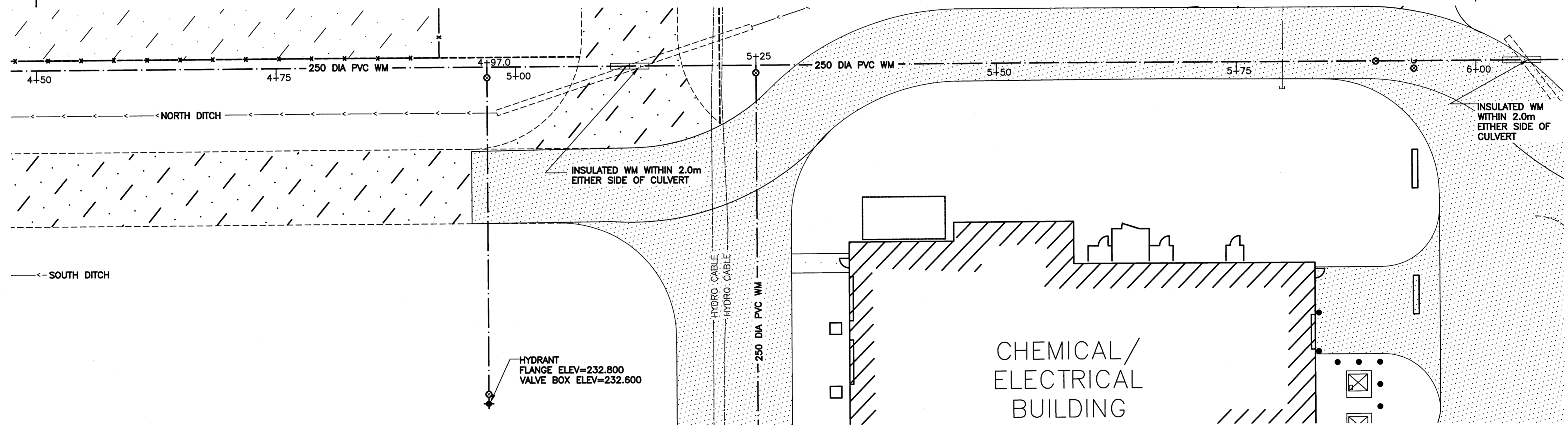
THE ORIGINAL ISSUE REV. 0 WAS STAMPED, DATED AND SIGNED BY: B.J. MIKOLAYENKO, P.ENG ON 2014/08/25

SOUTH END WATER POLLUTION CONTROL CENTRE
SEWPPC UPGRADE/EXPANSION PROJECT
CIVIL
WATERMAIN NORTH
STA 2+75 TO STA 4+50

CITY DRAWING NUMBER	SHEET	REV.	SIZE
1-0102-CUTY-Y006	002	03	A1

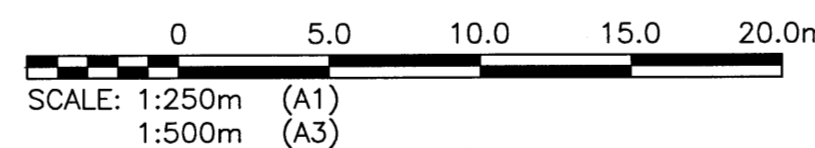


PROFILE VIEW-C
SCALE: 1:250



PLAN VIEW-C
SCALE: 1:250

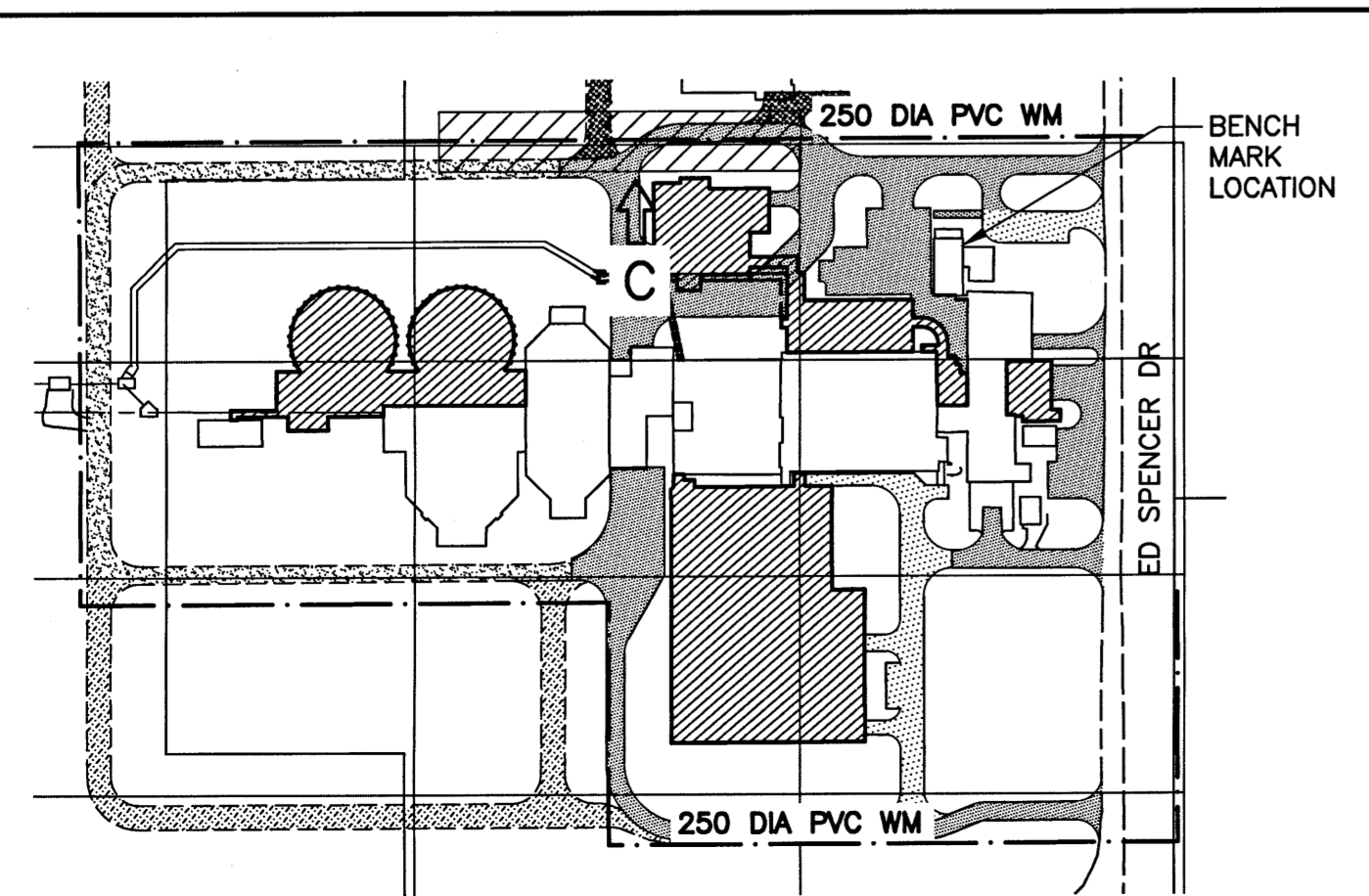
WATERMAIN LAYOUT CO-ORDINATES			
STATION	EASTING (X)	NORTHING (Y)	REMARKS
4+97.0	636801.270	5517588.642	FIRE HYDRANT TEE
4+97.0	636818.345	5517558.128	FIRE HYDRANT
5+25.0	636825.702	5517602.321	SERVICE TEE
5+89.56	636882.037	5517633.837	WM VALVE



WATERMAIN DRAWING NOTES
NOTES:
 1. ALL WORK PERFORMED IN ACCORDANCE WITH THE CITY OF WINNIPEG STANDARD CONSTRUCTION SPECIFICATIONS.
 2. ALL NEW WATERMAIN AND SERVICE CONNECTIONS HAVE MINIMUM 2.4 METRES OF COVER OR ARE INSULATED AS NOTED.

ITEM	ROAD HATCH LEGEND	
	EXISTING	NEW
GRAVEL ROAD		
CONCRETE ROAD		

LEGEND							
ITEM	EXISTING	NEW	ABANDONED	ITEM	EXISTING	NEW	ABANDONED
WM VALVE				GAS			
WM HYDRANT				DITCH			
SEWER				FENCE			
SEWER MH				SIGN			
SEWER CB				BOLLARD			
MTS				TREE			
MTS MH				BUSH			
HYDRO				ELEVATION			
HYDRO LS				CULVERT			
HYDRO POLE							



LOCATION PLAN

AS-BUILT

THESE AS-BUILT DOCUMENTS HAVE BEEN PREPARED BASED ON INFORMATION PROVIDED BY OTHERS. THE DESIGN PROFESSIONAL HAS NOT VERIFIED THE ACCURACY AND/OR THE COMPLETENESS OF THIS INFORMATION AND SHALL NOT BE RESPONSIBLE FOR ANY ERRORS OR OMISSIONS WHICH MAY BE INCORPORATED HEREIN AS A RESULT.

B.M. BRASS PLATE LOCATED IN GRADE BEAM OF ADMINSTRATOR BUILDING
 ELEV. 234.059

CH2MHILL

ENGINEER'S SEAL

THE CITY OF WINNIPEG
 WATER AND WASTE DEPARTMENT

DESIGNED BY:
 EMS

CHECKED BY:
 BJM

DRAWN BY:
 DMW

APPROVED BY:
 RJH

SCALE: AS NOTED

RELEASED FOR CONSTRUCTION
 BY: T. TURZAK

DATE: 2014/06/27

DATE: 2014/08/14

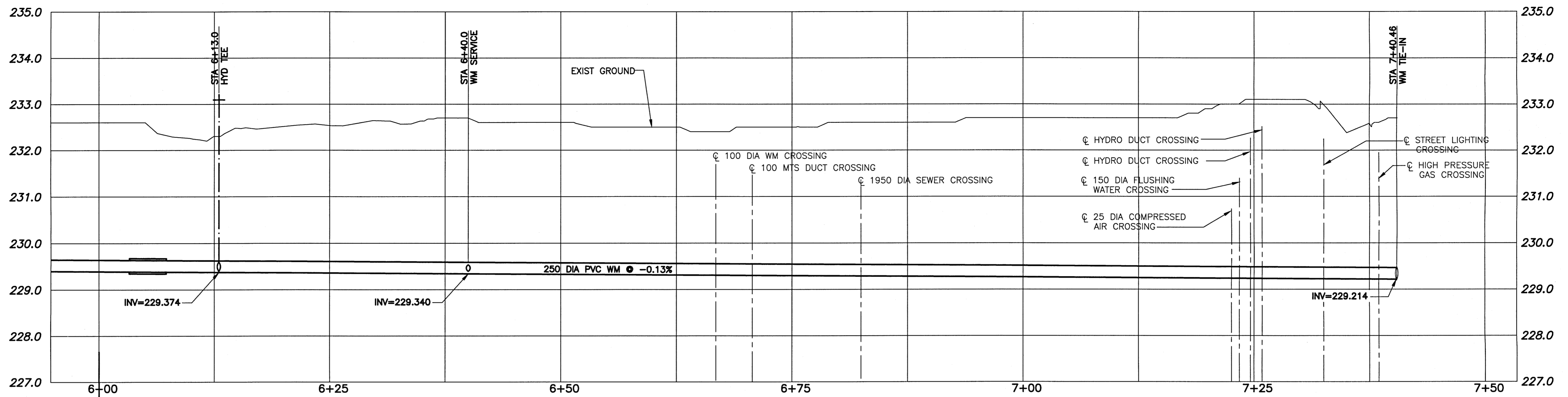
CONSULTANT NO.: 13-0338-002

THE ORIGINAL ISSUE
 REV. 0 WAS STAMPED,
 DATED AND SIGNED BY:
 B.J. MIKOLAYENKO, P.ENG
 ON 2014/08/25

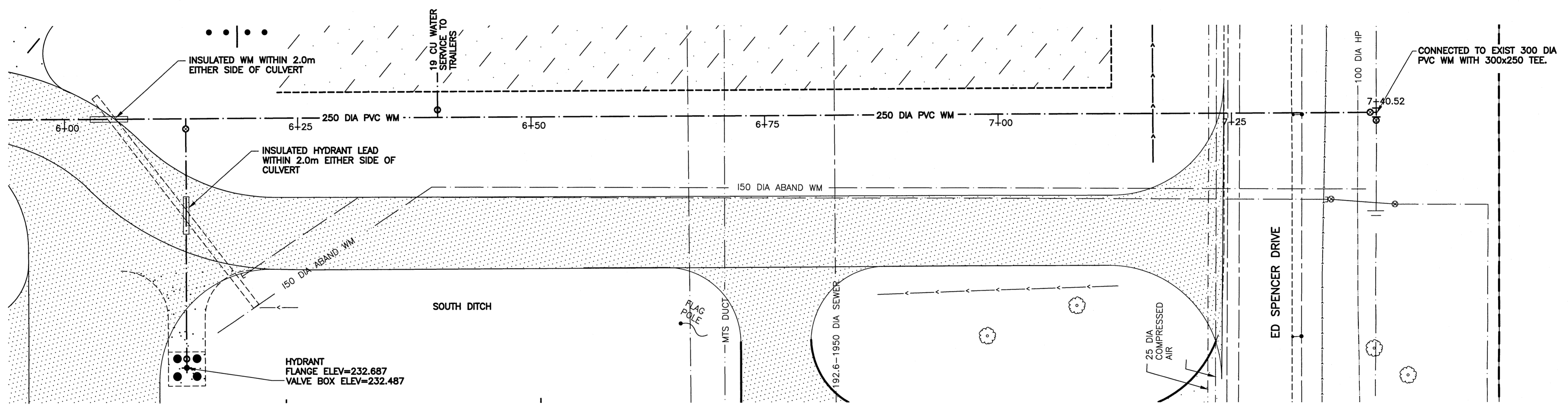
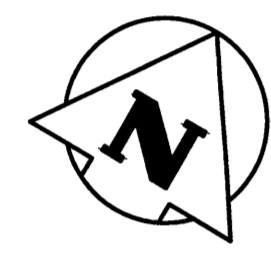
SOUTH END WATER POLLUTION CONTROL CENTRE
 SEWPCC UPGRADE/EXPANSION PROJECT
 CIVIL
 WATERMAIN NORTH
 STA 4+50 TO STA 6+00

NO.	REVISIONS	DATE	DESIGN	CHECK
02	AS-BUILT DRAWING - B.O. 333-2014	01/2017	EMS	BJM
01	ISSUED FOR CONSTRUCTION	08/2014	EMS	BJM
00	ISSUED FOR TENDER	06/2014	EMS	BJM

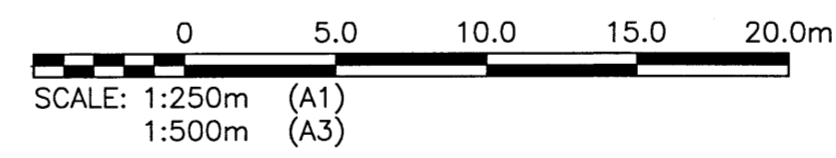
CITY DRAWING NUMBER	SHEET	REV.	SIZE
1-0102-CUTY-Y006	003	02	A1



PROFILE VIEW-D
SCALE: 1:250



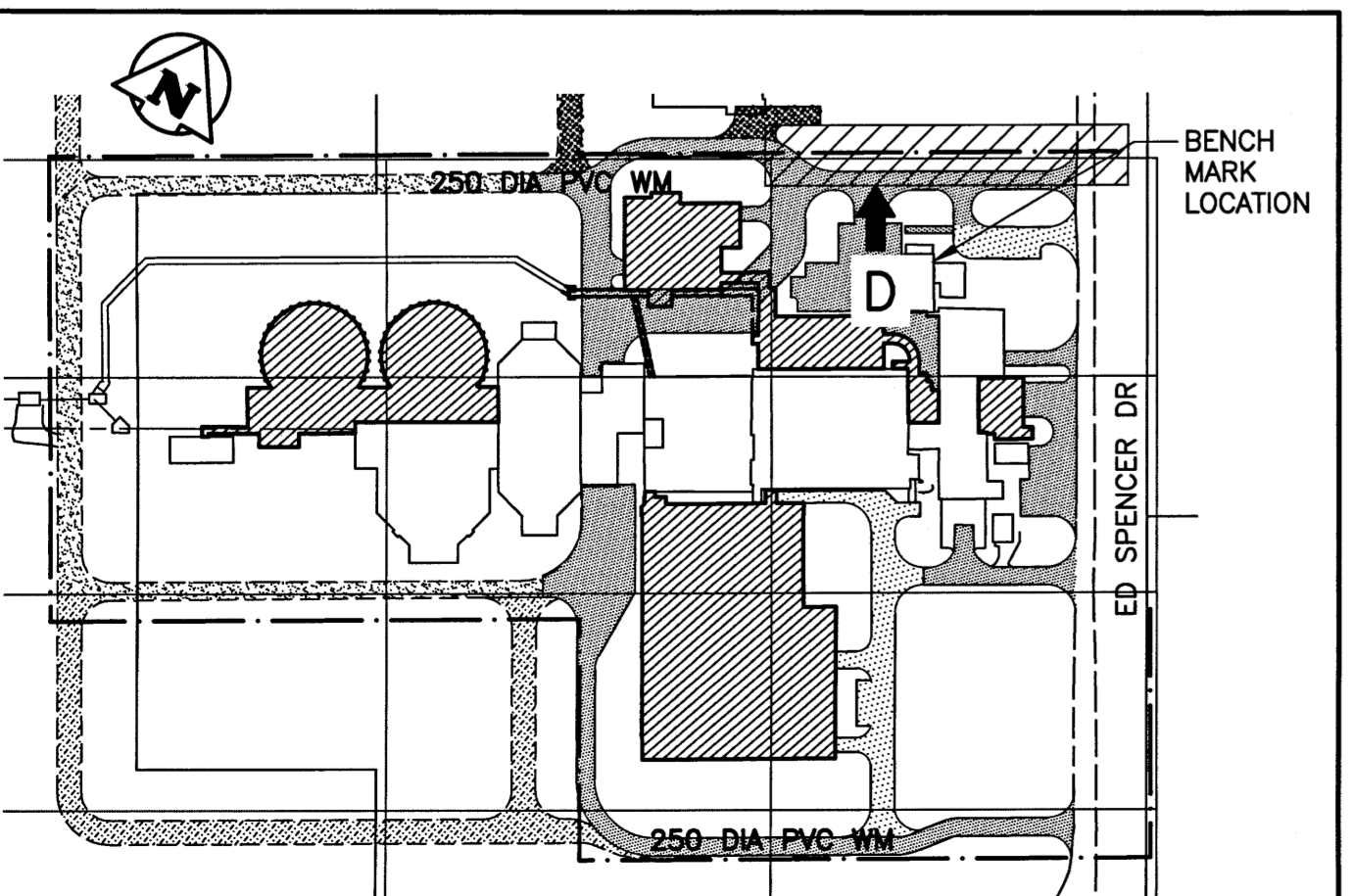
PLAN VIEW-D
SCALE: 1:250



WATERMAIN LAYOUT CO-ORDINATES			
STATION	EASTING (X)	NORTHING (Y)	REMARKS
6+13.0	636902.486	5517645.311	FIRE HYDRANT TEE
6+13.0	636915.491	5517622.084	FIRE HYDRANT
6+40.0	636926.044	5517658.501	WATER SERVICE TIE-IN
7+40.52	637013.750	5517707.607	WM TIE-IN

WATERMAIN DRAWING NOTES
NOTES:
1. ALL WORK PERFORMED IN ACCORDANCE WITH THE CITY OF WINNIPEG STANDARD CONSTRUCTION SPECIFICATIONS.
2. ALL NEW WATERMAIN AND SERVICE CONNECTIONS HAVE MINIMUM 2.4 METRES OF COVER OR ARE INSULATED AS NOTED.

AS-BUILT
THESE AS-BUILT DOCUMENTS HAVE BEEN PREPARED BASED ON INFORMATION PROVIDED BY OTHERS. THE DESIGN PROFESSIONAL HAS NOT VERIFIED THE ACCURACY AND/OR THE COMPLETENESS OF THIS INFORMATION AND SHALL NOT BE RESPONSIBLE FOR ANY ERRORS OR OMISSIONS WHICH MAY BE INCORPORATED HEREIN AS A RESULT.



LOCATION PLAN

LEGEND							
ITEM	EXISTING	NEW	ABANDONED	ITEM	EXISTING	NEW	ABANDONED
WM	—	—	---	GAS	—	—	---
WM VALVE	⊗	⊕	⊖	DITCH	—	—	---
WM HYDRANT	⊕	⊕	⊖	FENCE	—	—	---
SEWER	—	—	---	SIGN	⊗	⊕	⊖
SEWER MH	⊕	⊕	⊖	BOLLARD	⊗	⊕	⊖
SEWER CB	⊕	⊕	⊖	TREE	⊗	⊕	⊖
MTS	—	—	---	BUSH	⊗	⊕	⊖
MTS MH	⊕	⊕	⊖	ELEVATION	233.240	233.450	
HYDRO	—	—	---	CULVERT	—	—	---
HYDRO LS	—	—	---				
HYDRO POLE	⊕	⊕	⊖				

B.M. ELEV. 234.059	BRASS PLATE LOCATED IN GRADE BEAM OF ADMINSTRATOR BUILDING		
02	AS-BUILT DRAWING - B.O. 333-2014	01/2017	EMS BJM
01	ISSUED FOR CONSTRUCTION	08/2014	EMS BJM
00	ISSUED FOR TENDER	06/2014	EMS BJM
NO. REVISIONS	DATE	DESIGN	CHECK

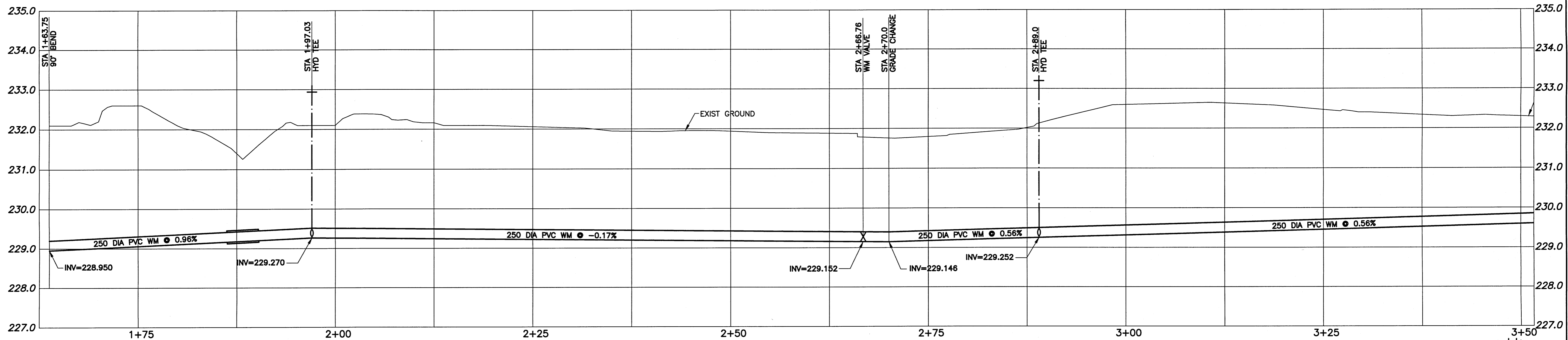
CH2MHILL
DESIGNED BY: EMS
DRAWN BY: DMW
SCALE: AS NOTED
DATE: 2014/06/27
CONSULTANT NO.: 13-0338-002

CHECKED BY: BJM
APPROVED BY: RJH
RELEASED FOR CONSTRUCTION BY: T. TURZAK
DATE: 2014/08/14

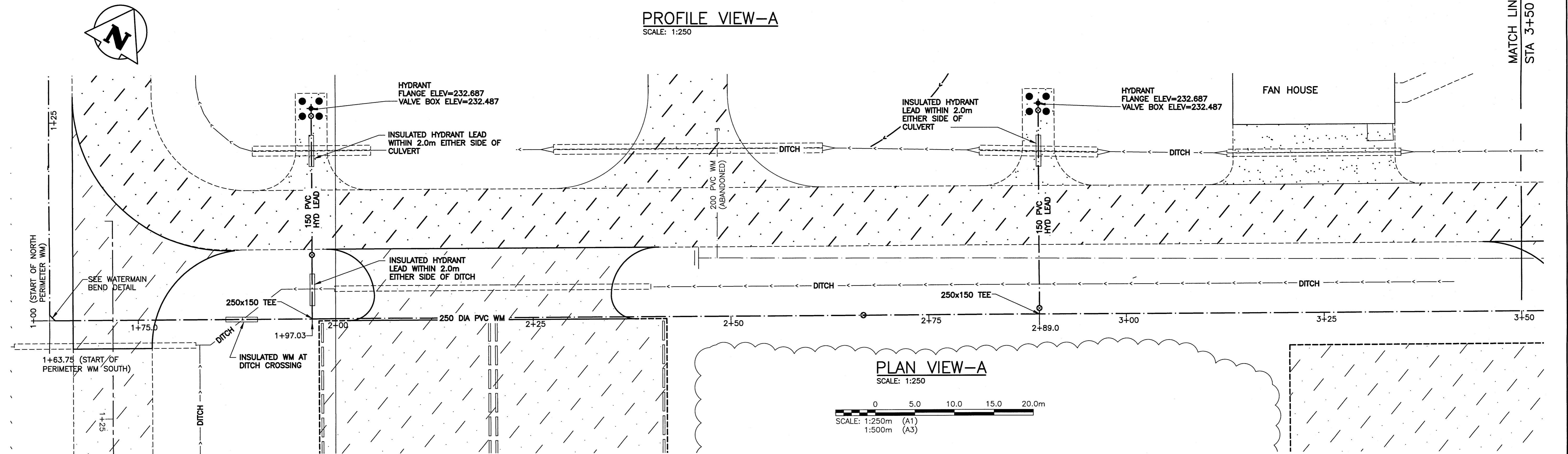
ENGINEER'S SEAL
THE ORIGINAL ISSUE REV. 0 WAS STAMPED, DATED AND SIGNED BY: B.J. MIKOLAYENKO, P.ENG ON 2014/06/25

THE CITY OF WINNIPEG
WATER AND WASTE DEPARTMENT
SOUTH END WATER POLLUTION CONTROL CENTRE
SEWPCC UPGRADE/EXPANSION PROJECT
CIVIL
WATERMAIN NORTH
STA 6+00 TO STA 7+40.52

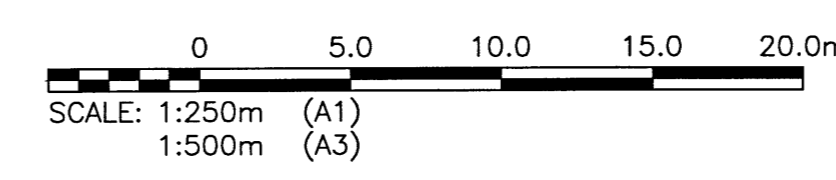
CITY DRAWING NUMBER: 1-0102-CUTY-Y006
SHEET: 004
REV: 02
SIZE: A1



PROFILE VIEW-A
SCALE: 1:250



PLAN VIEW-A
SCALE: 1:250



WATERMAIN LAYOUT CO-ORDINATES			
STATION	EASTING (X)	NORTHING (Y)	REMARKS
1+63.75	636718.571	5517320.294	90° BEND
1+97.03	636747.611	5517336.553	FIRE HYDRANT TEE
1+97.03	636734.806	5517359.781	FIRE HYDRANT
2+66.76	636808.443	5517370.614	WM VALVE
2+89.00	636827.856	5517381.482	FIRE HYDRANT TEE
2+89.00	636814.816	5517404.772	FIRE HYDRANT

AS-BUILT

THESE AS-BUILT DOCUMENTS HAVE BEEN PREPARED BASED ON INFORMATION PROVIDED BY OTHERS. THE DESIGN PROFESSIONAL HAS NOT VERIFIED THE ACCURACY AND/OR THE COMPLETENESS OF THIS INFORMATION AND SHALL NOT BE RESPONSIBLE FOR ANY ERRORS OR OMISSIONS WHICH MAY BE INCORPORATED HEREIN AS A RESULT.

WATERMAIN DRAWING NOTES

NOTES:

- ALL WORK SHALL PERFORMED IN ACCORDANCE WITH THE CITY OF WINNIPEG STANDARD CONSTRUCTION SPECIFICATIONS.
- ALL NEW WATERMAIN AND SERVICE CONNECTIONS HAVE MINIMUM 2.4 METRES OF COVER OR ARE INSULATED AS NOTED.

B.M. ELEV. 234.059	BRASS PLATE LOCATED IN GRADE BEAM OF ADMINSTRATOR BUILDING	
02	AS-BUILT DRAWING - B.O. 333-2014	01/2017 EMS BJM
01	ISSUED FOR CONSTRUCTION	08/2014 EMS BJM
00	ISSUED FOR TENDER	06/2014 EMS BJM
CONSULTANT NO.: 13-0338-002		DATE: 2014/06/27
NO. REVISIONS		DATE DESIGN CHECK

CH2MHILL

DESIGNED BY: EMS
CHECKED BY: BJM

DRAWN BY: DMW
APPROVED BY: RJH

SCALE: AS NOTED
DATE: 2014/06/27
RELEASED FOR CONSTRUCTION BY: T. TURZAK
DATE: 2014/08/14

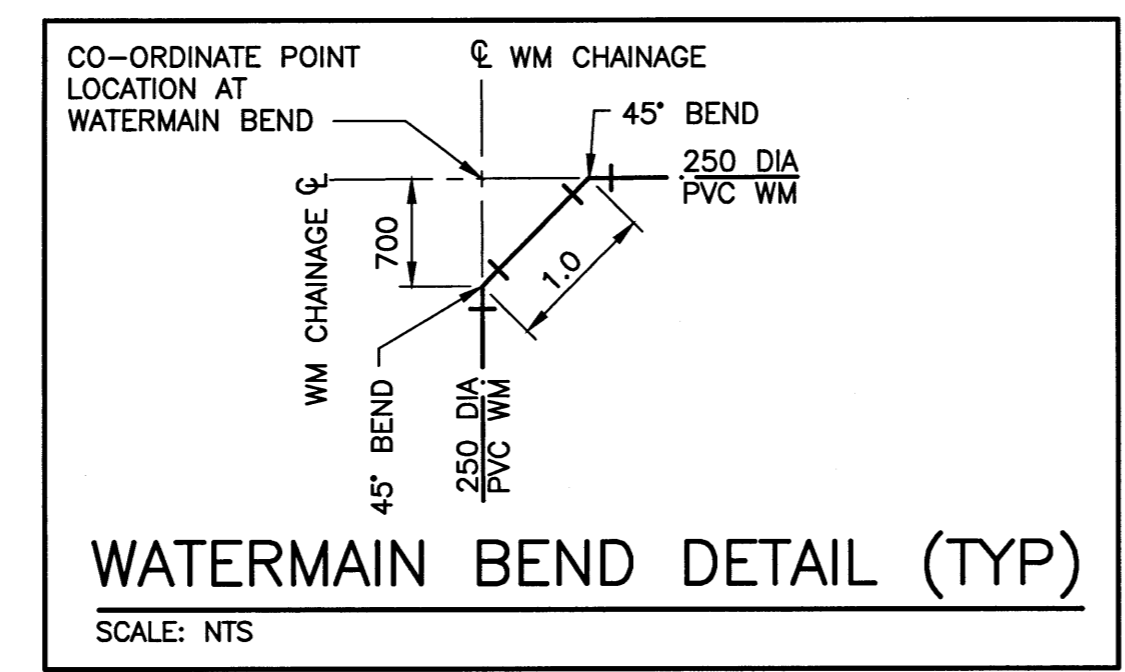
ENGINEER'S SEAL
THE ORIGINAL ISSUE REV. 0 WAS STAMPED, DATED AND SIGNED BY: B.J. MIKOLAYENKO, P.ENG ON 2014/06/25

THE CITY OF WINNIPEG
WATER AND WASTE DEPARTMENT

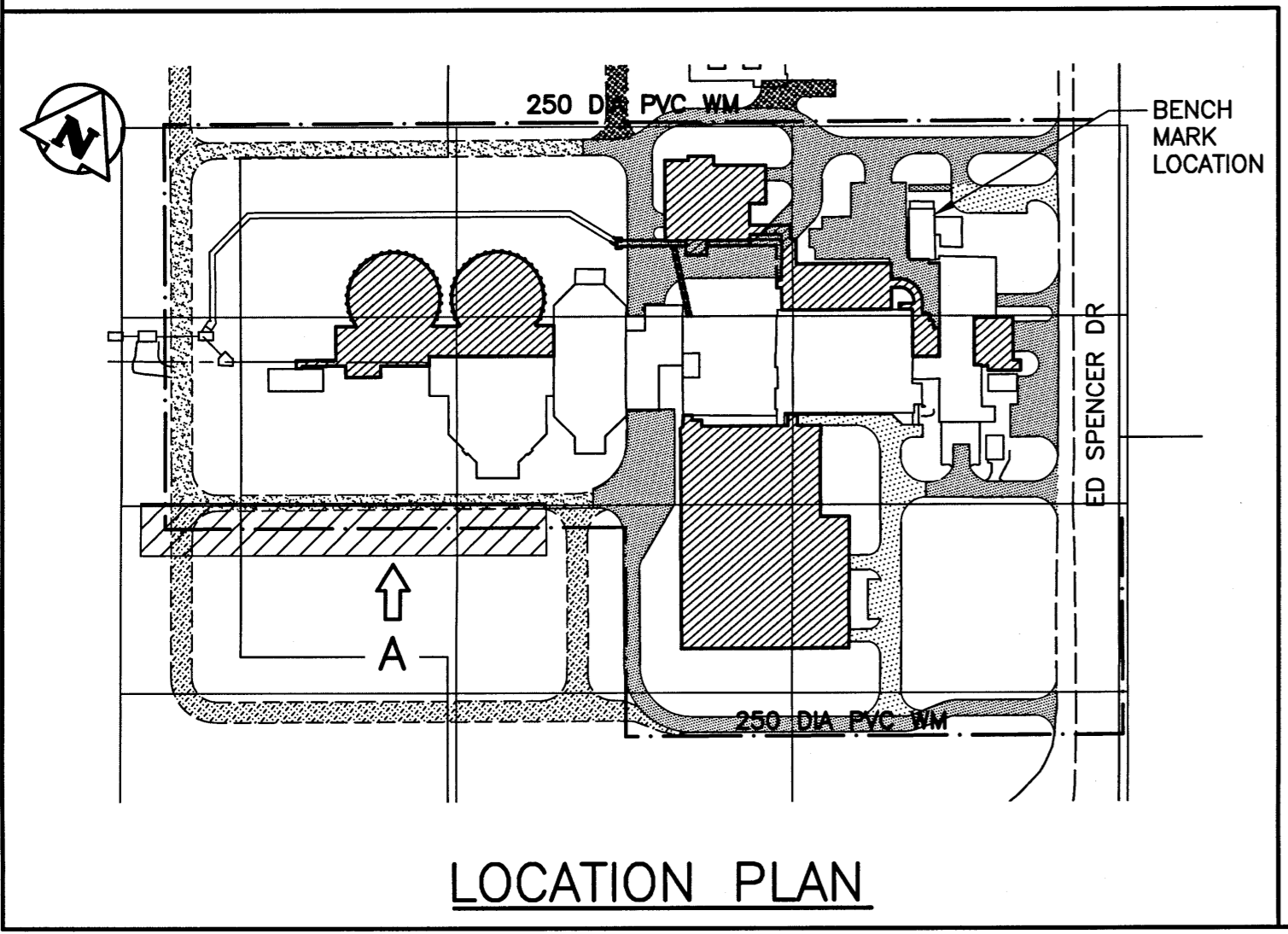
Winnipeg

SOUTH END WATER POLLUTION CONTROL CENTRE
SEWPCC UPGRADE/EXPANSION PROJECT
CIVIL
WATERMAIN SOUTH
STA 1+63.75 TO STA 3+50

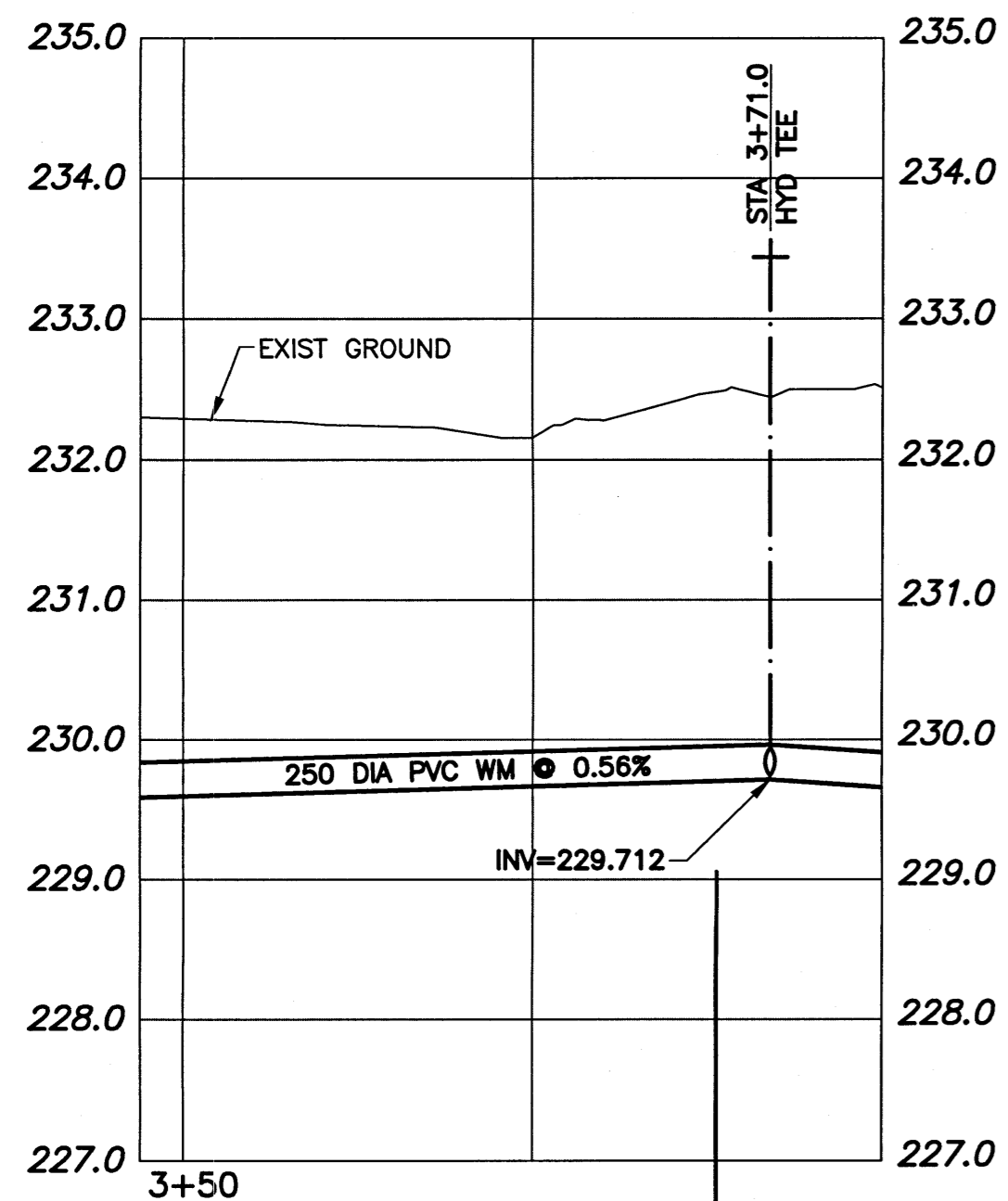
CITY DRAWING NUMBER	SHEET	REV.	SIZE
1-0102-CUTY-Y007	001	02	A1



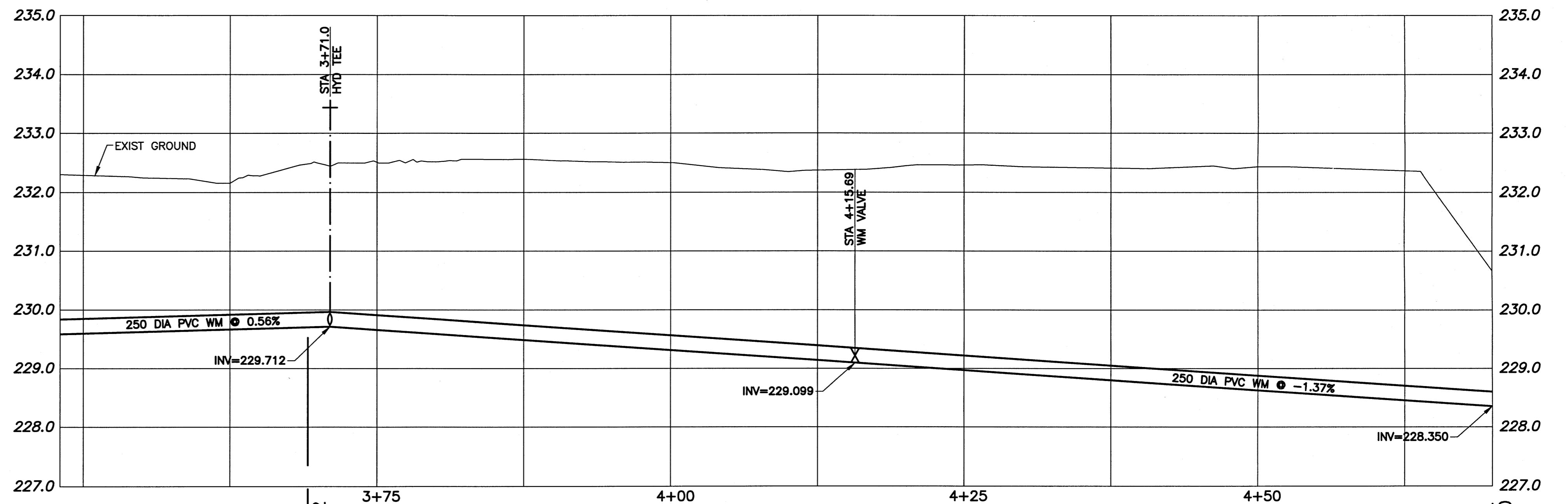
LEGEND		
ITEM	EXISTING	NEW
WM VALVE	⊗	⊕
WM HYDRANT	⊙	⊕
SEWER	—	—
SEWER MH	○	●
SEWER CB	□	■
MTS	—	—
MTS MH	○	●
HYDRO	—	—
HYDRO LS	—	—
HYDRO POLE	●	●



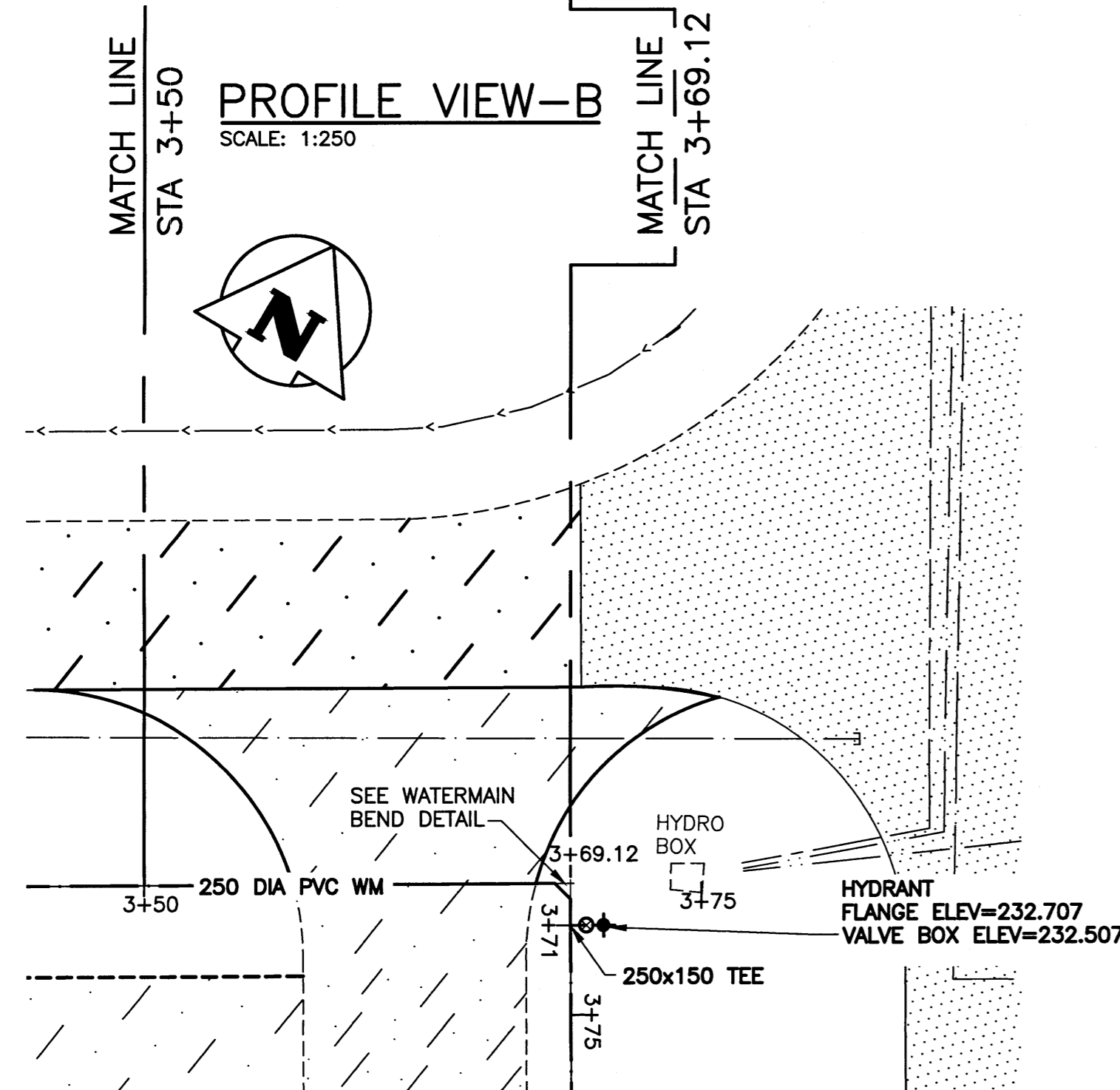
LOCATION PLAN



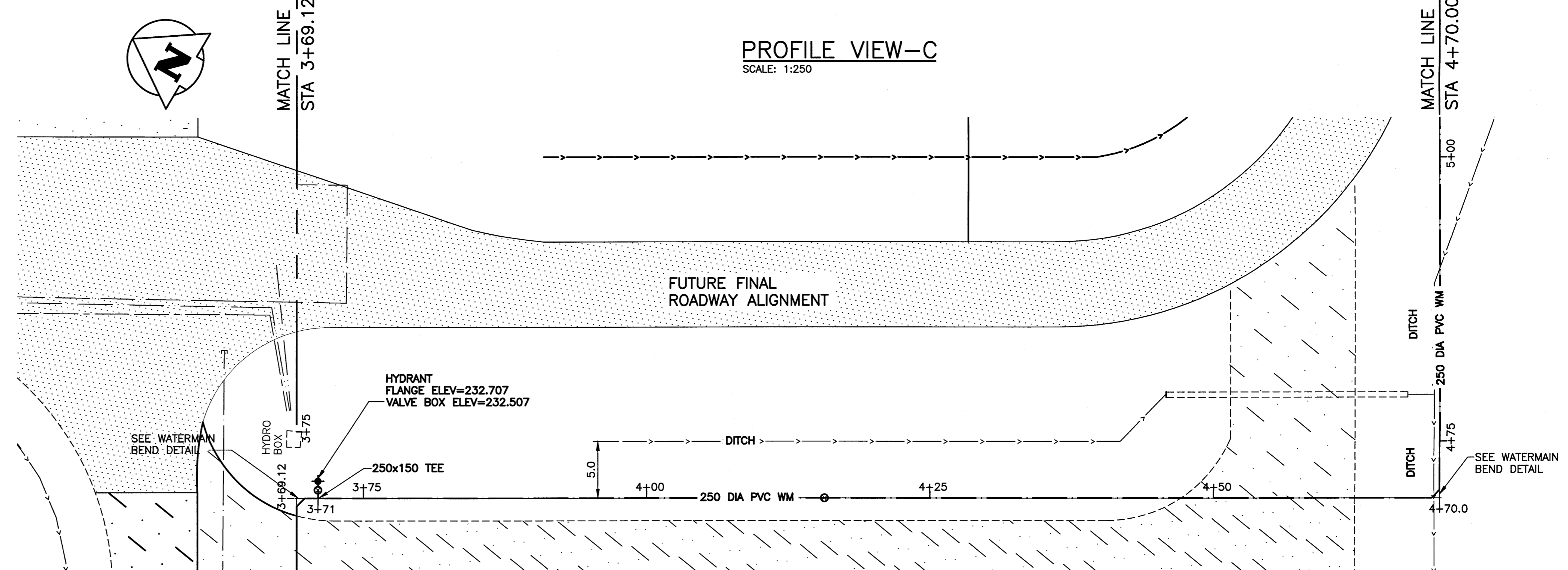
PROFILE VIEW-B
SCALE: 1:250



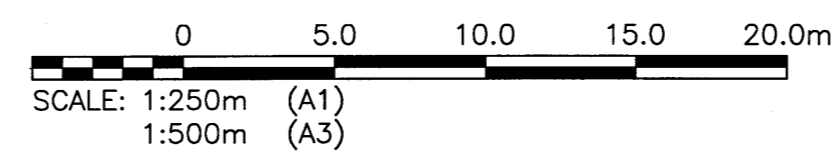
PROFILE VIEW-C
SCALE: 1:250



PLAN VIEW-B
SCALE: 1:250



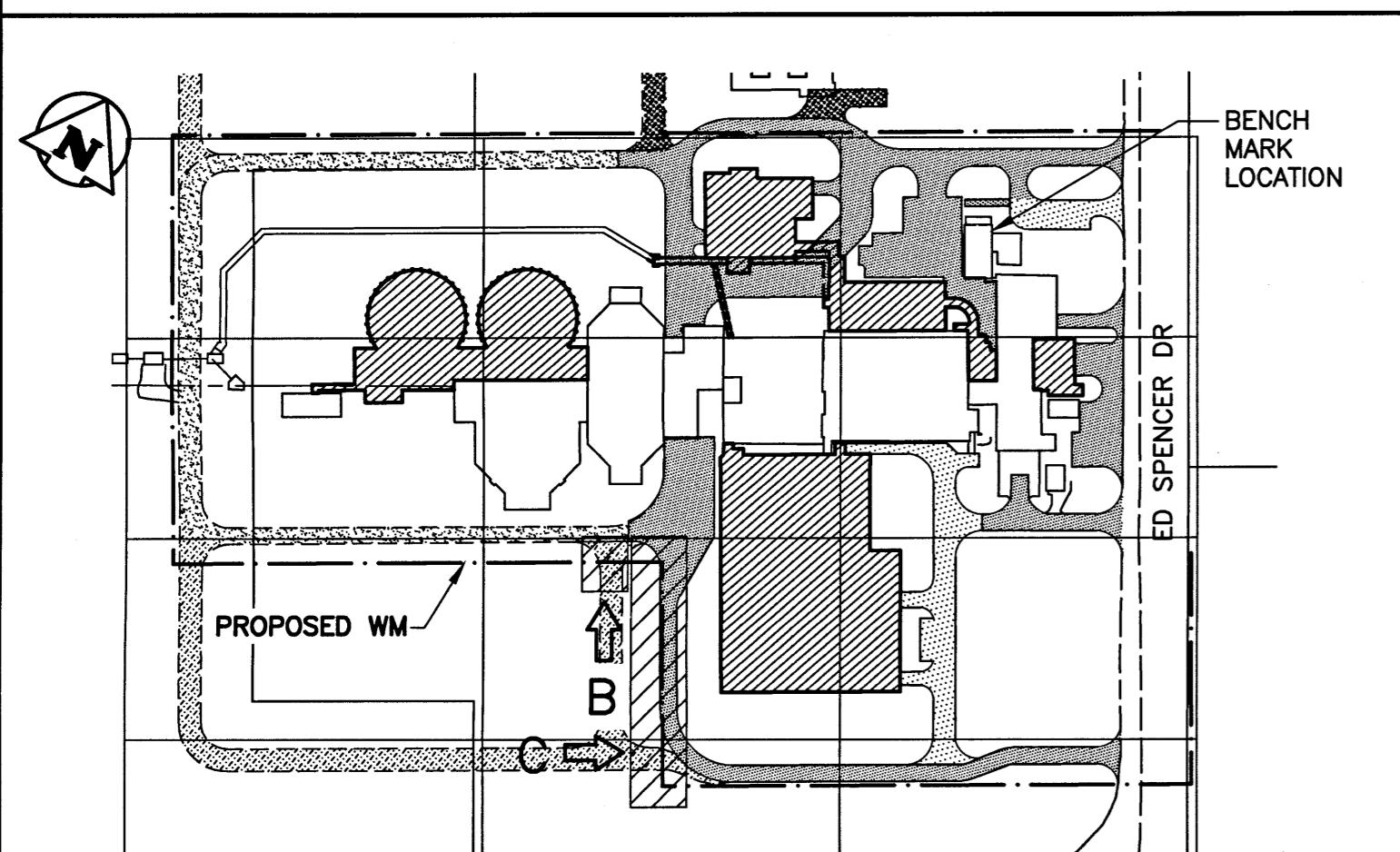
PLAN VIEW-C
SCALE: 1:250



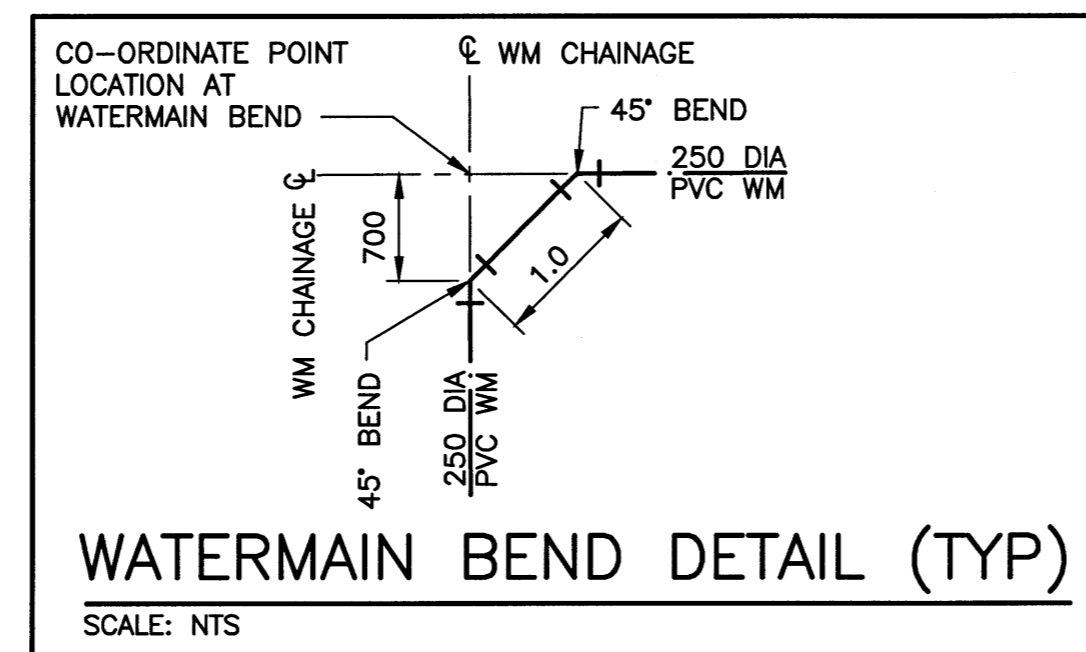
WATERMAIN LAYOUT CO-ORDINATES			
STATION	EASTING (X)	NORTHING (Y)	REMARKS
3+69.12	636897.766	5517420.624	90° BEND
3+71.00	636898.685	5517418.984	FIRE HYDRANT TEE
4+15.69	636920.524	5517379.983	WM VALVE
4+70.00	636917.050	5517332.601	90° BEND

AS-BUILT

THESE AS-BUILT DOCUMENTS HAVE BEEN PREPARED BASED ON INFORMATION PROVIDED BY OTHERS. THE DESIGN PROFESSIONAL HAS NOT VERIFIED THE ACCURACY AND/OR THE COMPLETENESS OF THIS INFORMATION AND SHALL NOT BE RESPONSIBLE FOR ANY ERRORS OR OMISSIONS WHICH MAY BE INCORPORATED HEREIN AS A RESULT.



LOCATION PLAN



WATERMAIN BEND DETAIL (TYP)
SCALE: NTS

WATERMAIN DRAWING NOTES

- NOTES:
1. ALL WORK PERFORMED IN ACCORDANCE WITH THE CITY OF WINNIPEG STANDARD CONSTRUCTION SPECIFICATIONS.
 2. ALL NEW WATERMAIN AND SERVICE CONNECTIONS HAVE MINIMUM 2.4 METRES OF COVER OR ARE INSULATED AS NOTED.

LEGEND						
ITEM	EXISTING	NEW	ABANDONED	ITEM	EXISTING	NEW
WM	—	—	---	GAS	—	—
WM VALVE	⊗	⊙	---	DITCH	- - -	- - -
WM HYDRANT	⊕	⊙	---	FENCE	- - -	- - -
SEWER	—	—	---	SIGN	⊗	⊙
SEWER MH	○	●	○	BOLLARD	⊙	⊙
SEWER CB	□	■	□	TREE	⊙	⊙
MTS	—	—	---	BUSH	⊙	⊙
MTS MH	○	●	○	ELEVATION	233.240	233.450
HYDRO	—	—	---	CULVERT	====	====
HYDRO LS	—	—	---			
HYDRO POLE	⊕	⊙	---			

B.M. BRASS PLATE LOCATED IN GRADE BEAM OF ADMINSTRATOR BUILDING
ELEV. 234.059

CH2MHILL

DESIGNED BY: EMS
DRAWN BY: DMW

CHECKED BY: BJM
APPROVED BY: RJH

SCALE: AS NOTED
DATE: 2014/06/27

CONSULTANT NO.: 13-0338-002

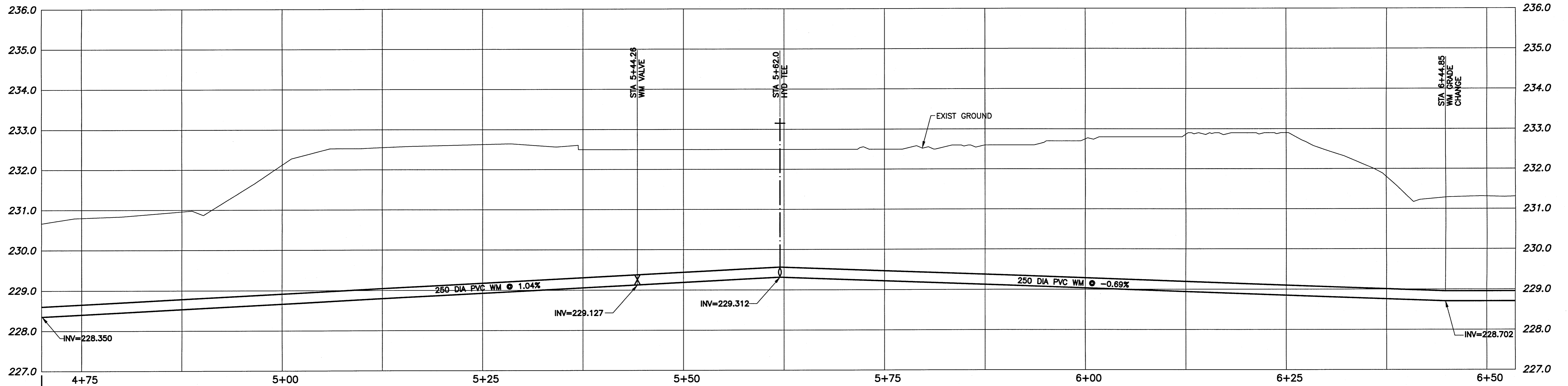
ENGINEER'S SEAL

THE ORIGINAL ISSUE REV. 0 WAS STAMPED, DATED AND SIGNED BY: B.J. MIKOLAYENKO, P.ENG ON 2014/06/25

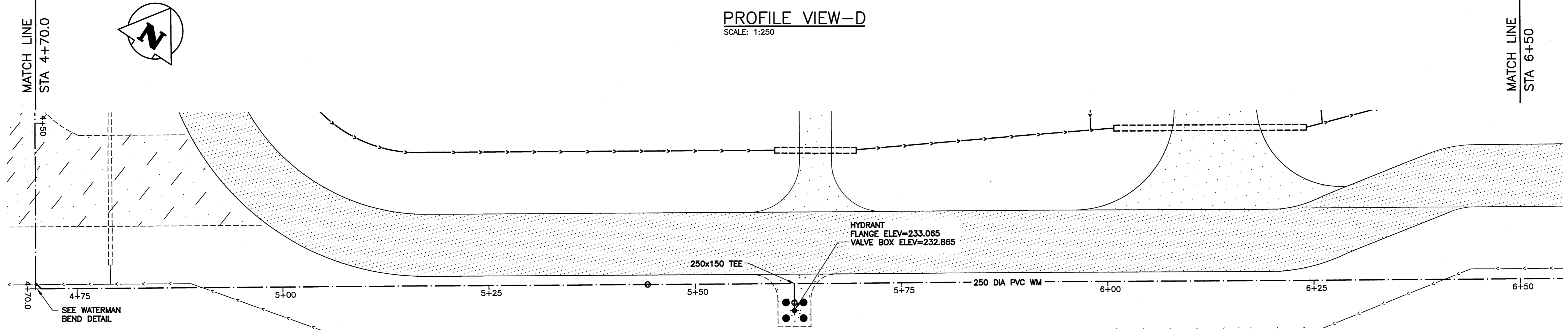
THE CITY OF WINNIPEG
WATER AND WASTE DEPARTMENT

SOUTH END WATER POLLUTION CONTROL CENTRE
SEWPPC UPGRADE/EXPANSION PROJECT
CIVIL
WATERMAIN SOUTH
STA 3+72.57 TO STA 4+73.45

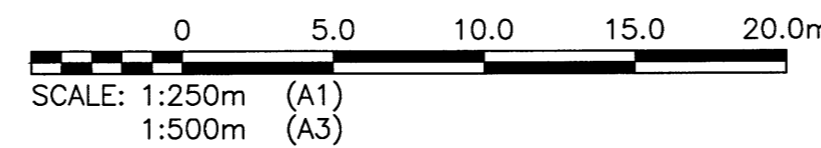
CITY DRAWING NUMBER	SHEET	REV.	SIZE
1-0102-CUTY-Y007	002	03	A1



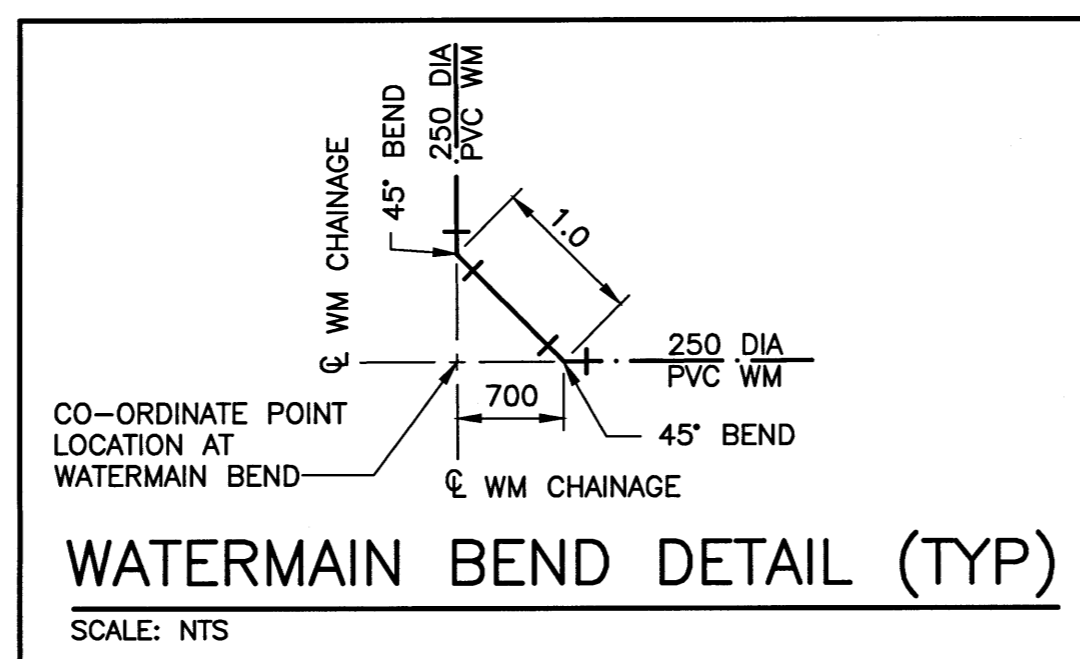
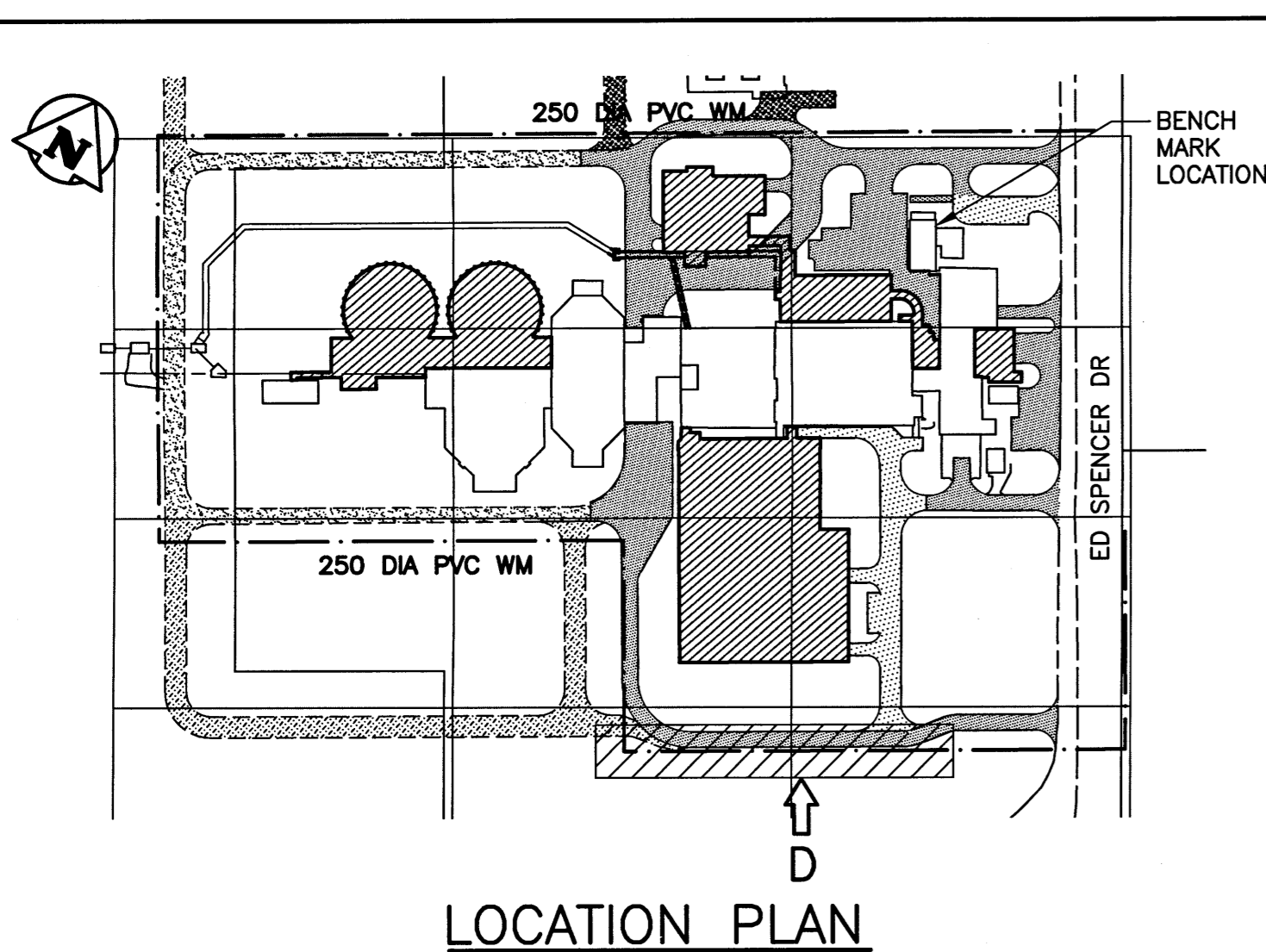
PROFILE VIEW-D
SCALE: 1:250



PLAN VIEW-D
SCALE: 1:250



WATERMAIN LAYOUT CO-ORDINATES			
STATION	EASTING (X)	NORTHING (Y)	REMARKS
4+70.00	636947.050	5517332.601	90° BEND
5+44.26	637011.832	5517368.872	WM VALVE
5+62.00	637027.320	5517377.543	FIRE HYDRANT TEE
5+62.0	637028.923	5517374.680	FIRE HYDRANT



WATERMAIN DRAWING NOTES

NOTES:

- ALL WORK SHALL BE PERFORMED IN ACCORDANCE WITH THE CITY OF WINNIPEG STANDARD CONSTRUCTION SPECIFICATIONS.
- ALL NEW WATERMAIN AND SERVICE CONNECTIONS SHALL HAVE MINIMUM 2.4 METRES OF COVER.

AS-BUILT

THESE AS-BUILT DOCUMENTS HAVE BEEN PREPARED BASED ON INFORMATION PROVIDED BY OTHERS. THE DESIGN PROFESSIONAL HAS NOT VERIFIED THE ACCURACY AND/OR THE COMPLETENESS OF THIS INFORMATION AND SHALL NOT BE RESPONSIBLE FOR ANY ERRORS OR OMISSIONS WHICH MAY BE INCORPORATED HEREIN AS A RESULT.

LEGEND						
ITEM	EXISTING	NEW	ABANDONED	ITEM	EXISTING	NEW
WM VALVE	⊗	⊕		GAS	—	—
WM HYDRANT	⊕	⊕		FENCE	—	—
SEWER MH	○	●	○	SIGN	—	—
SEWER CB	□	■	□	BOLLARD	○	○
MTS	—	—	—	TREE	⊙	⊙
MTS MH	○	●		BUSH	⊙	⊙
HYDRO LS	—	—	—	ELEVATION	233.240	233.450
HYDRO POLE	●	●		CULVERT	—	—

B.M. ELEV.	BRASS PLATE LOCATED IN GRADE BEAM OF ADMINSTRATOR BUILDING		
	234.059		
DESIGNED BY:	EMS	CHECKED BY:	BJM
DRAWN BY:	DMW	APPROVED BY:	RJH
03	AS-BUILT DRAWING - B.O. 333-2014	01/2017	EMS
02	ISSUED FOR CONSTRUCTION	08/2014	EMS BJM
01	ISSUED FOR ADDENDUM NO.1	07/2014	EMS BJM
00	ISSUED FOR TENDER	06/2014	EMS BJM
NO. REVISIONS	DATE	DESIGN	CHECK

CH2MHILL

SINCE-LABALIN

SCALE: AS NOTED

DATE: 2014/06/27

CONSULTANT NO.: 13-0338-002

ENGINEER'S SEAL

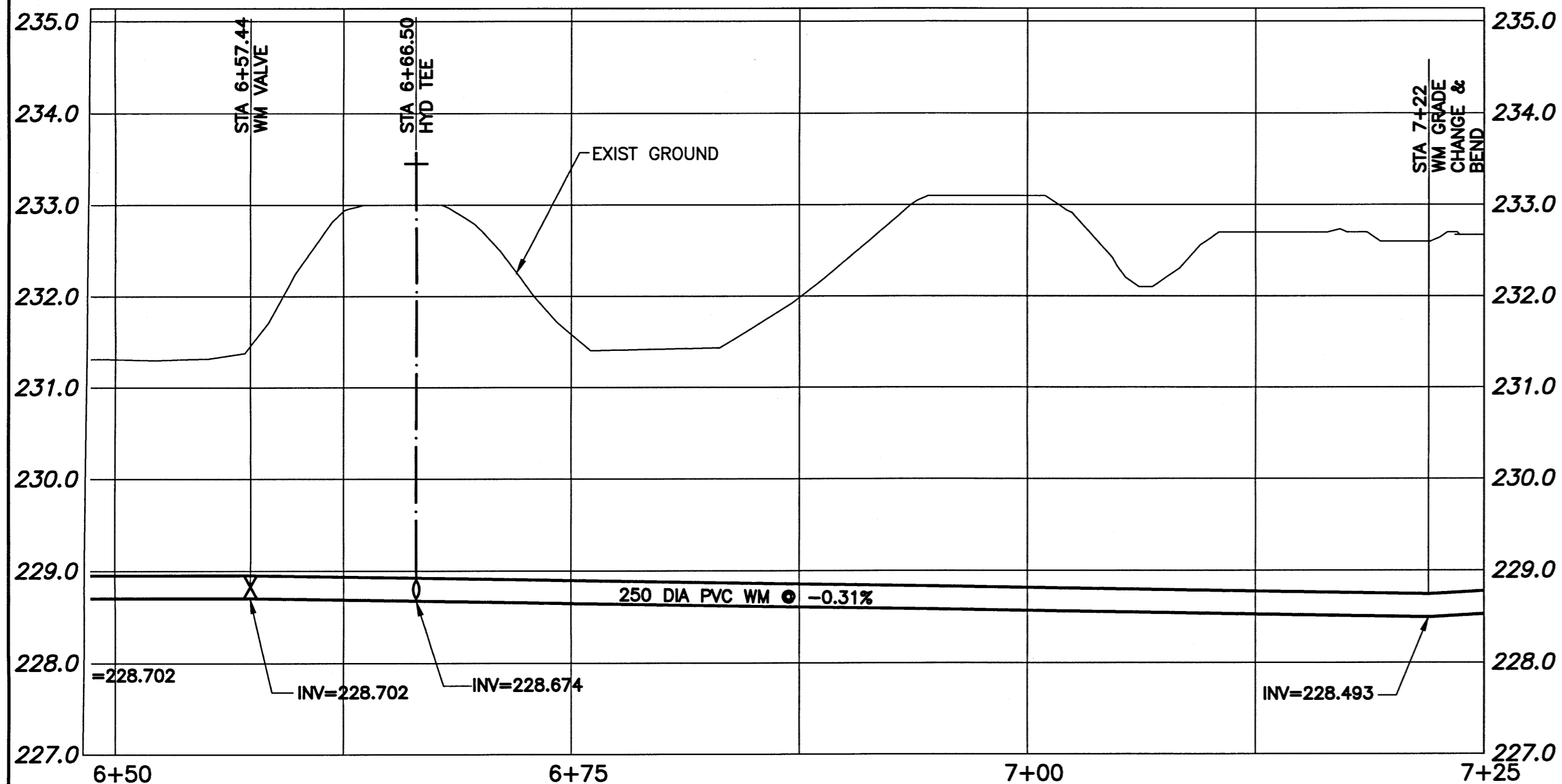
THE ORIGINAL ISSUE REV. 0 WAS STAMPED, DATED AND SIGNED BY: B.J. MIKOLAYENKO, P.ENG ON 2014/06/25

THE CITY OF WINNIPEG
WATER AND WASTE DEPARTMENT

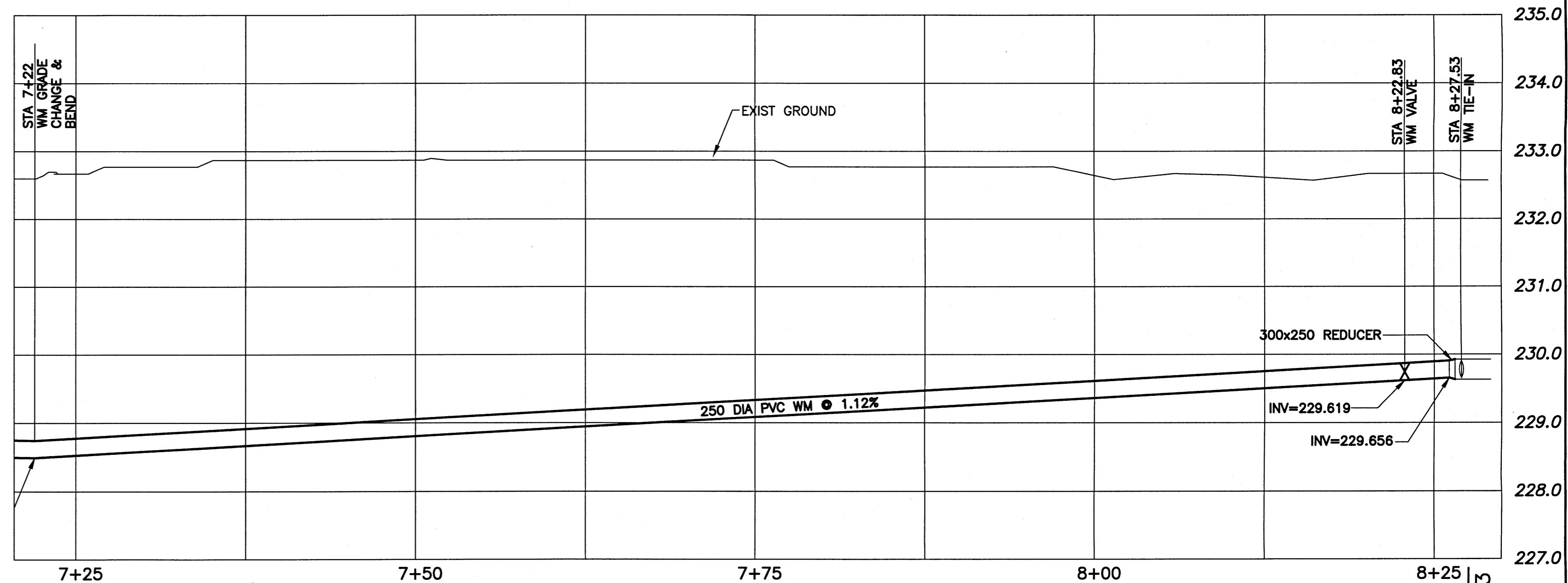
SOUTH END WATER POLLUTION CONTROL CENTRE
SEWPCC UPGRADE/EXPANSION PROJECT
CIVIL
WATERMAIN SOUTH
STA 4+73.45 TO STA 6+50

CITY DRAWING NUMBER: 1-0102-CUTY-Y007
SHEET: 003
REV: 03
SIZE: A1

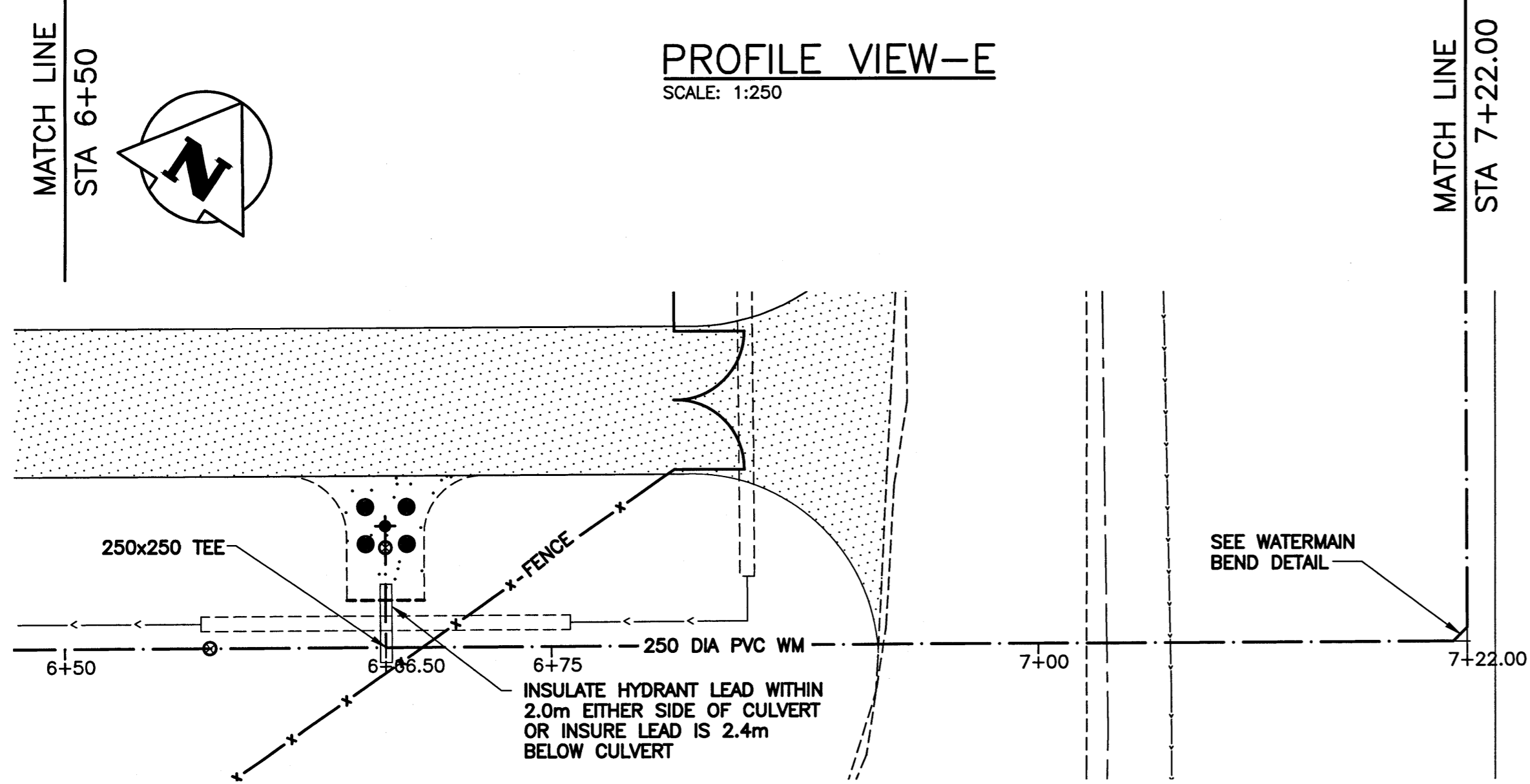
A1 SIZE - 594mm x 841mm



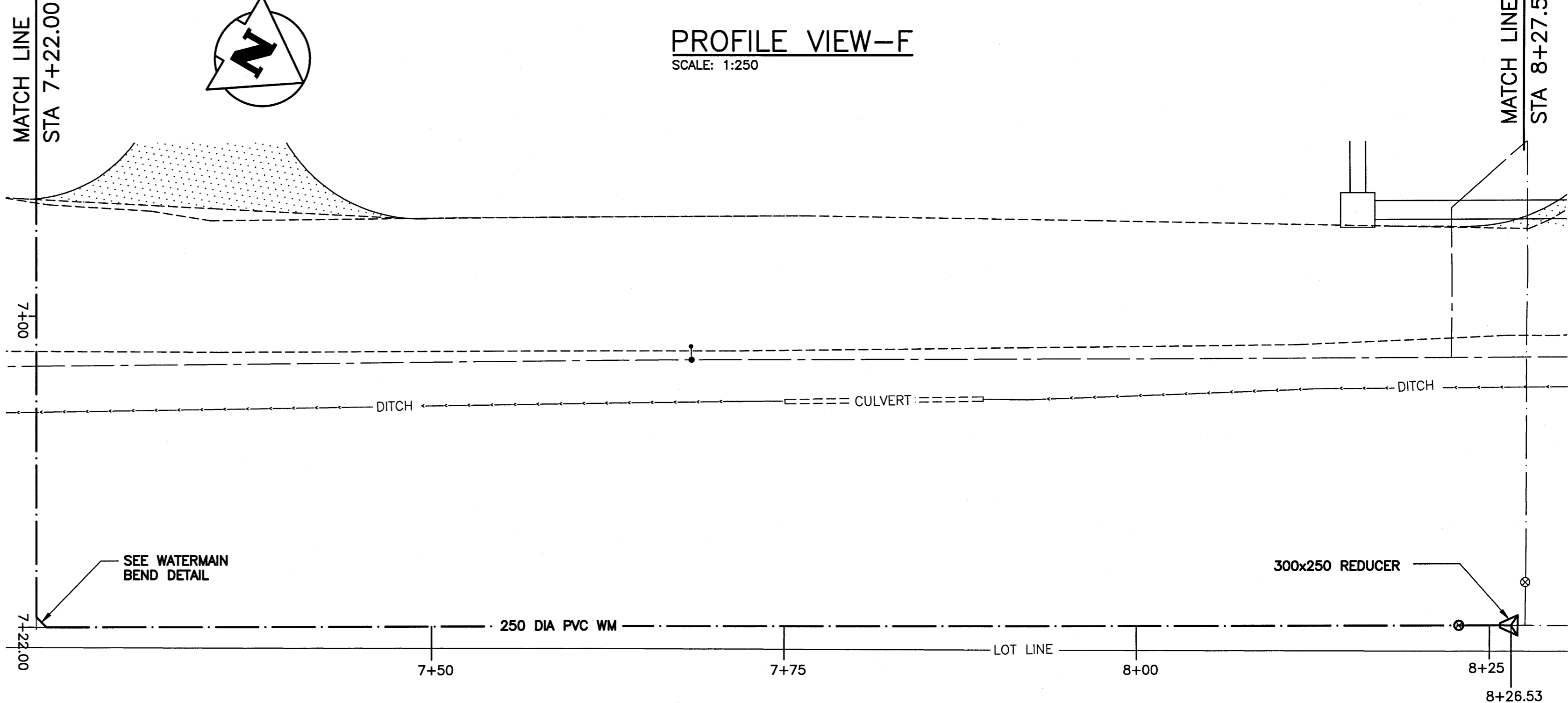
PROFILE VIEW-E
SCALE: 1:250



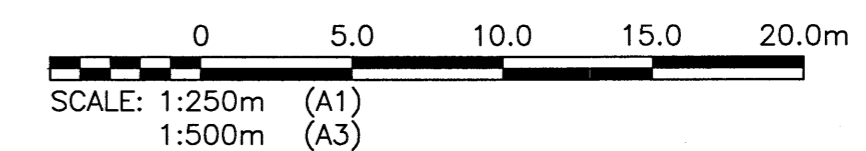
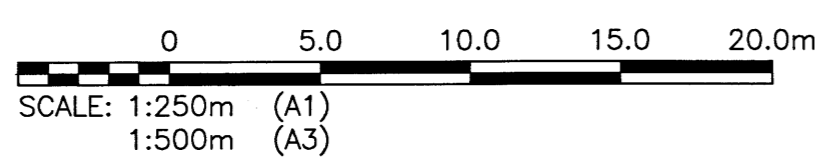
PROFILE VIEW-F
SCALE: 1:250



PLAN VIEW-E
SCALE: 1:250

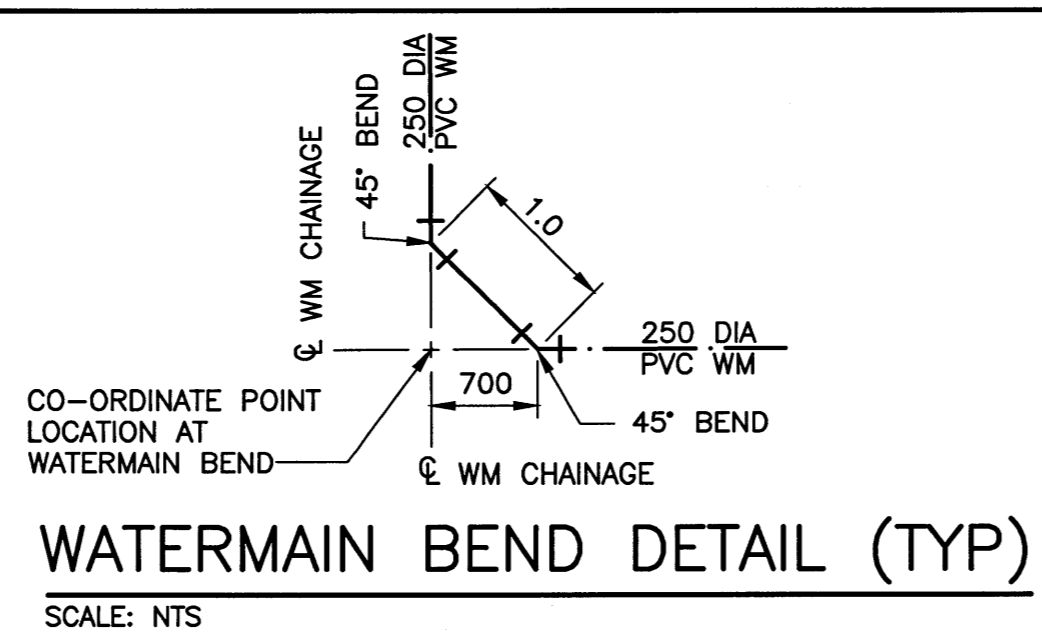


PLAN VIEW-F
SCALE: 1:250

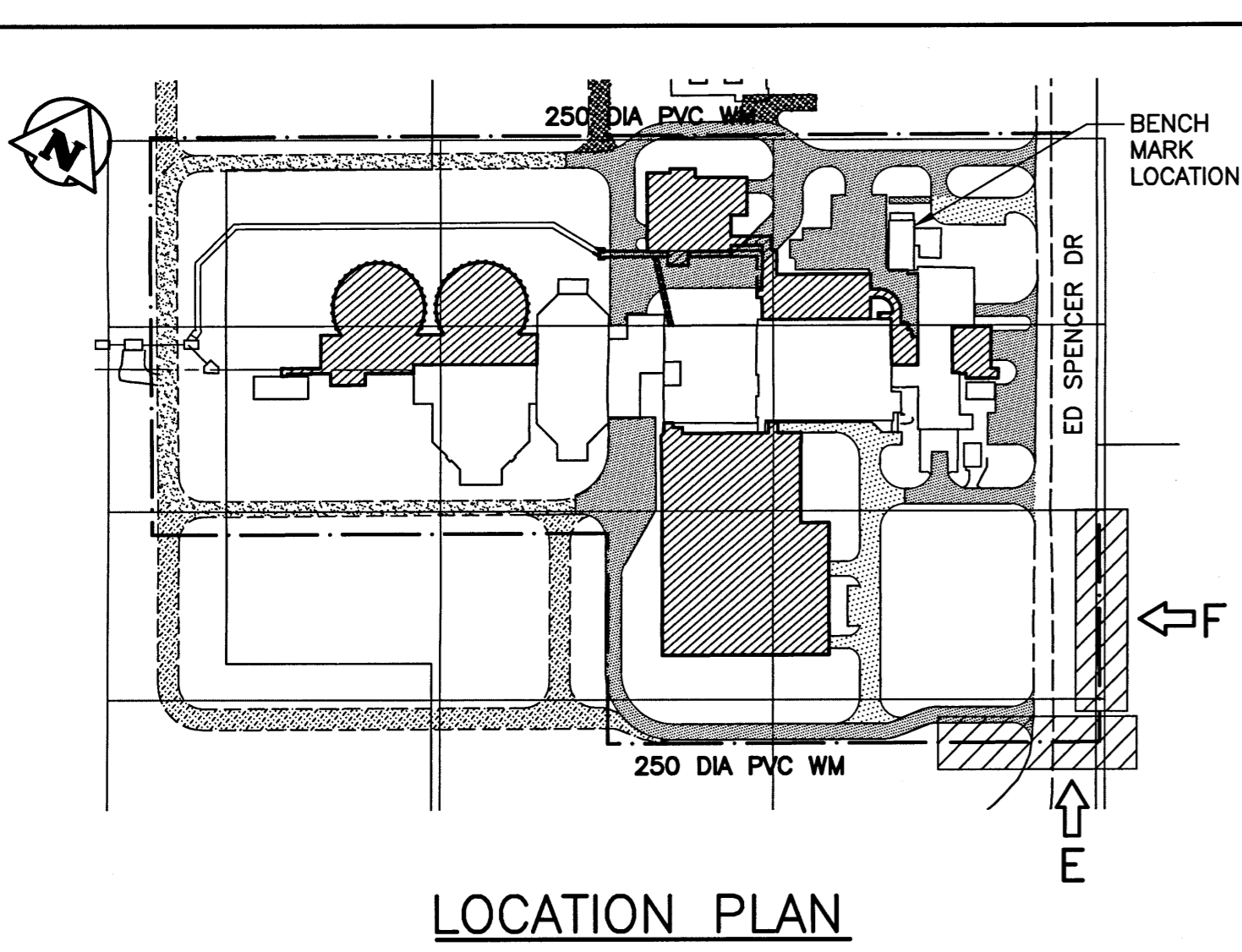


WATERMAIN LAYOUT CO-ORDINATES			
STATION	EASTING (X)	NORTHING (Y)	REMARKS
6+57.44	637110.594	5517424.168	WM VALVE
6+66.50	637118.478	5517428.582	FIRE HYDRANT TEE
6+66.50	637115.454	5517433.983	FIRE HYDRANT
7+22.00	637166.928	5517455.708	90° BEND
8+22.83	637117.668	5517543.688	WM VALVE
8+26.53	637115.864	5517546.923	250x300 REDUCER

- WATERMAIN DRAWING NOTES**
- NOTES:
- ALL WORK PERFORMED IN ACCORDANCE WITH THE CITY OF WINNIPEG STANDARD CONSTRUCTION SPECIFICATIONS.
 - ALL NEW WATERMAIN AND SERVICE CONNECTIONS HAVE MINIMUM 2.4 METRES OF COVER OR ARE INSULATED AS NOTED.



ITEM	LEGEND			ITEM	LEGEND		
	EXISTING	NEW	ABANDONED		EXISTING	NEW	ABANDONED
WM	—	—	- - -	GAS	—	—	- - -
WM VALVE	⊗	⊗	⊗	DITCH	—	—	- - -
WM HYDRANT	⊕	⊕	⊕	FENCE	—	—	- - -
SEWER	—	—	- - -	SIGN	—	—	- - -
SEWER MH	⊙	⊙	⊙	BOLLARD	⊙	⊙	⊙
SEWER CB	□	□	□	TREE	⊙	⊙	⊙
MTS	—	—	- - -	BUSH	⊙	⊙	⊙
MTS MH	⊙	⊙	⊙	ELEVATION	233.240	(233.450)	⊙
HYDRO	—	—	- - -	CULVERT	—	—	- - -
HYDRO LS	—	—	- - -				
HYDRO POLE	●	●	●				



AS-BUILT

THESE AS-BUILT DOCUMENTS HAVE BEEN PREPARED BASED ON INFORMATION PROVIDED BY OTHERS. THE DESIGN PROFESSIONAL HAS NOT VERIFIED THE ACCURACY AND/OR THE COMPLETENESS OF THIS INFORMATION AND SHALL NOT BE RESPONSIBLE FOR ANY ERRORS OR OMISSIONS WHICH MAY BE INCORPORATED HEREIN AS A RESULT.

NO.	REVISIONS	DATE	DESIGN	CHECK
02	AS-BUILT DRAWING - B.O. 333-2014	01/2017	EMS	BJM
01	ISSUED FOR CONSTRUCTION	08/2014	EMS	BJM
00	ISSUED FOR TENDER	06/2014	EMS	BJM

CH2MHILL

DESIGNED BY: EMS
CHECKED BY: BJM

DRAWN BY: DMW
APPROVED BY: RJH

SCALE: AS NOTED
RELEASED FOR CONSTRUCTION BY: T. TURZAK

DATE: 2014/06/27
DATE: 2014/08/14

CONSULTANT NO.: 13-0338-002

ENGINEER'S SEAL

THE ORIGINAL ISSUE REV. 0 WAS STAMPED, DATED AND SIGNED BY: B.J. MIKOLAYENKO, P.ENG ON 2014/06/25

THE CITY OF WINNIPEG
WATER AND WASTE DEPARTMENT

**SOUTH END WATER POLLUTION CONTROL CENTRE
SEWPPC UPGRADE/EXPANSION PROJECT**

CIVIL
WATERMAIN SOUTH
STA 7+25.27 TO STA 8+29.02

CITY DRAWING NUMBER: 1-0102-CUTY-Y007
SHEET: 004
REV: 02
SIZE: A1

LAST SAVE: 2017/01/26 - 2:04pm
PATH: P:\Projects\2013\13-0338-002 Dwg\Main\333-2014_1-0102-CUTY-Y007-004.dwg