

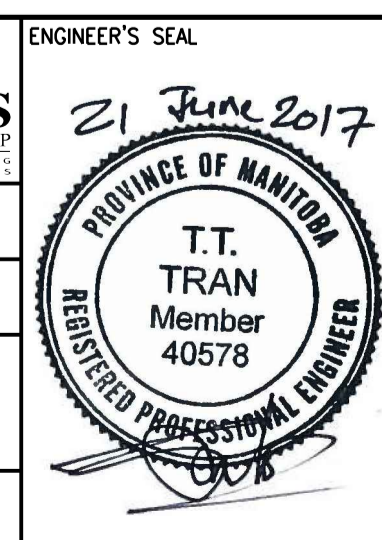
NOTES:

- VFD SPEED SET AT TIME OF COMMISSIONING. NO SPEED CONTROL REQUIRED.



NO.	REVISIONS	DATE	DESIGN	CHECK
01	ISSUED FOR ADDENDUM 3 - 976-2016	2017/06/21	S.S.B.	T.M.C.
00	ISSUED FOR CONSTRUCTION - 976-2016	2017/04/05	J.C.	J.C.

<b>CH2MHILL</b>		<b>KCS GROUP CONSULTING ENGINEERS</b>	
DESIGNED BY: T. TRAN	CHECKED BY: R. NATARAJAN	DATE: 2017/04/05	ISSUED FOR CONSTRUCTION DATE: 2017/04/05
DRAWN BY: J. CORTEZ	APPROVED BY: H.T. FREIHAMMER	CONSULTANT NO.: 474248	
SCALE: NTS	BY: J. SHUMKA		



**THE CITY OF WINNIPEG**  
Winnipeg WATER AND WASTE DEPARTMENT

SOUTH END WATER POLLUTION CONTROL CENTRE  
SEWPCC UPGRADING/EXPANSION PROJECT  
PROCESS AND INSTRUMENTATION DIAGRAM  
BIOREACTORS AIR EXHAUST FANS  
EF-R601 AND EF-R602

CITY DRAWING NUMBER: 1-0102-PPID-R602 | SHEET: 001 | REV: 01 | SIZE: A1