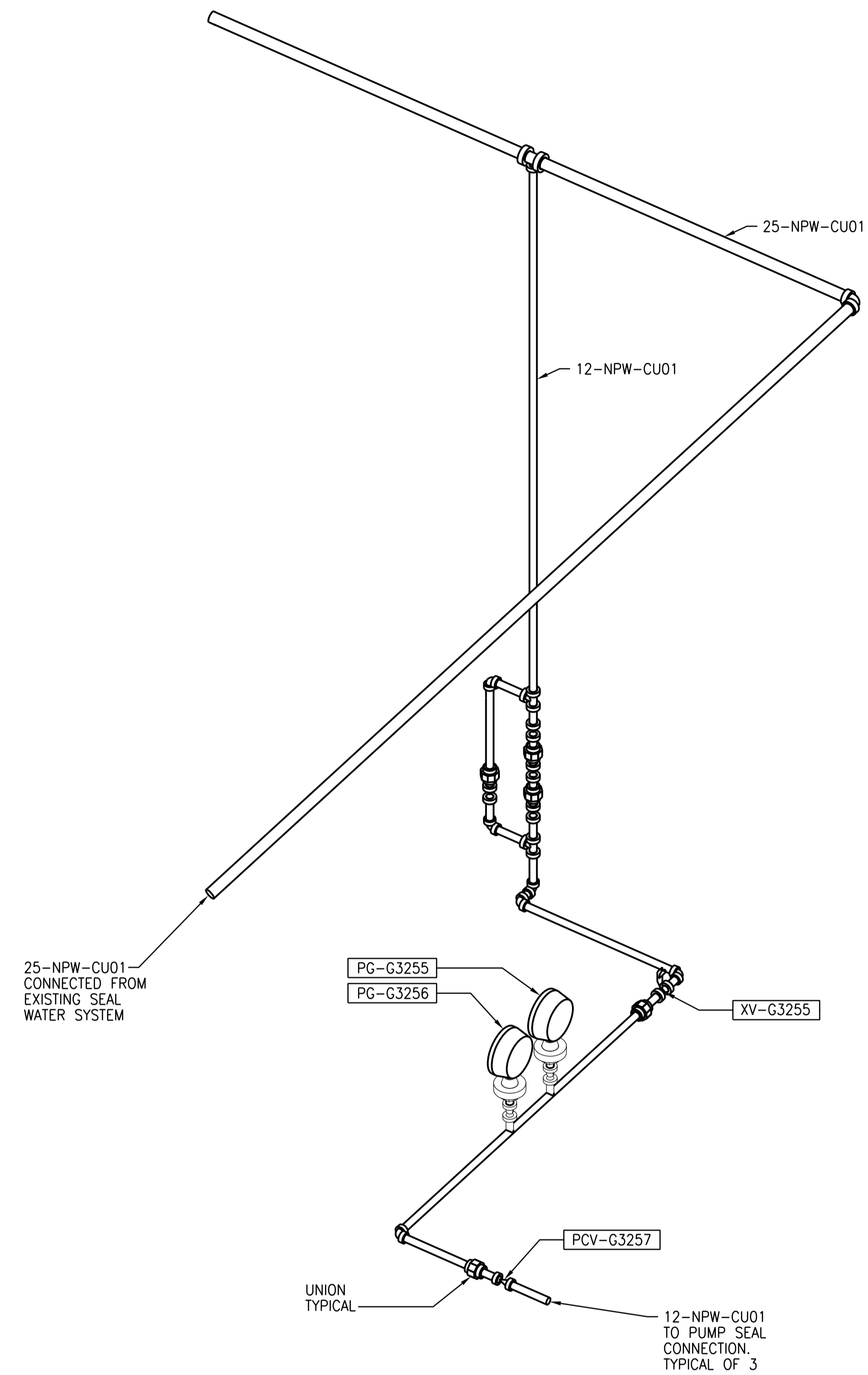


PLUMBING - ISOMETRIC
NTS



DETAIL 1
NTS

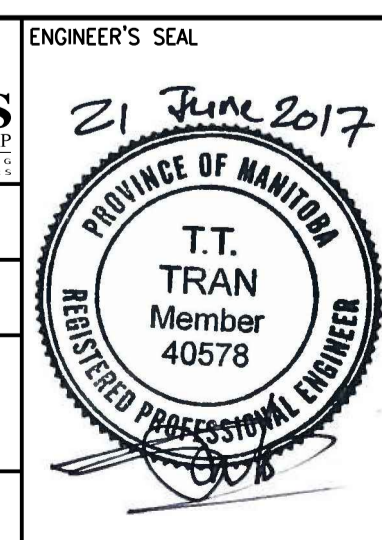


NO.	REVISIONS	DATE	DESIGN	CHECK
04	ISSUED FOR ADDENDUM 3 - 976-2016	2017/06/21	K.F.	J.C.
03	ISSUED FOR CONSTRUCTION - 976-2016	2017/04/05	K.F.	J.C.
02	ISSUED FOR 90% PRELIMINARY REVIEW	05/2016	K.F.	J.C.
01	ISSUED FOR CONSTRUCTION	10/2015	K.F.	J.C.
00	ISSUED FOR TENDER	08/2015	K.F.	J.C.

CH2MHILL
SNC-LAVALIN

DESIGNED BY: T. TRAN
DRAWN BY: K. FONG
SCALE: 1:50
DATE: 2017/04/05
CONSULTANT NO.: 474248

CHECKED BY: D. CUDDINGTON
APPROVED BY: H.T. FREIHAMMER
ISSUED FOR CONSTRUCTION BY: J. SHUMKA
DATE: 2017/04/05



THE CITY OF WINNIPEG
Winnipeg WATER AND WASTE DEPARTMENT

SOUTH END WATER POLLUTION CONTROL CENTRE
SEWPCC UPGRADING/EXPANSION PROJECT
MECHANICAL
GRIT TANKS 1 AND 2
PLUMBING - ISOMETRIC

CITY DRAWING NUMBER: 1-0102-MGAD-G502
SHEET: 04
REV: 04
SIZE: A1