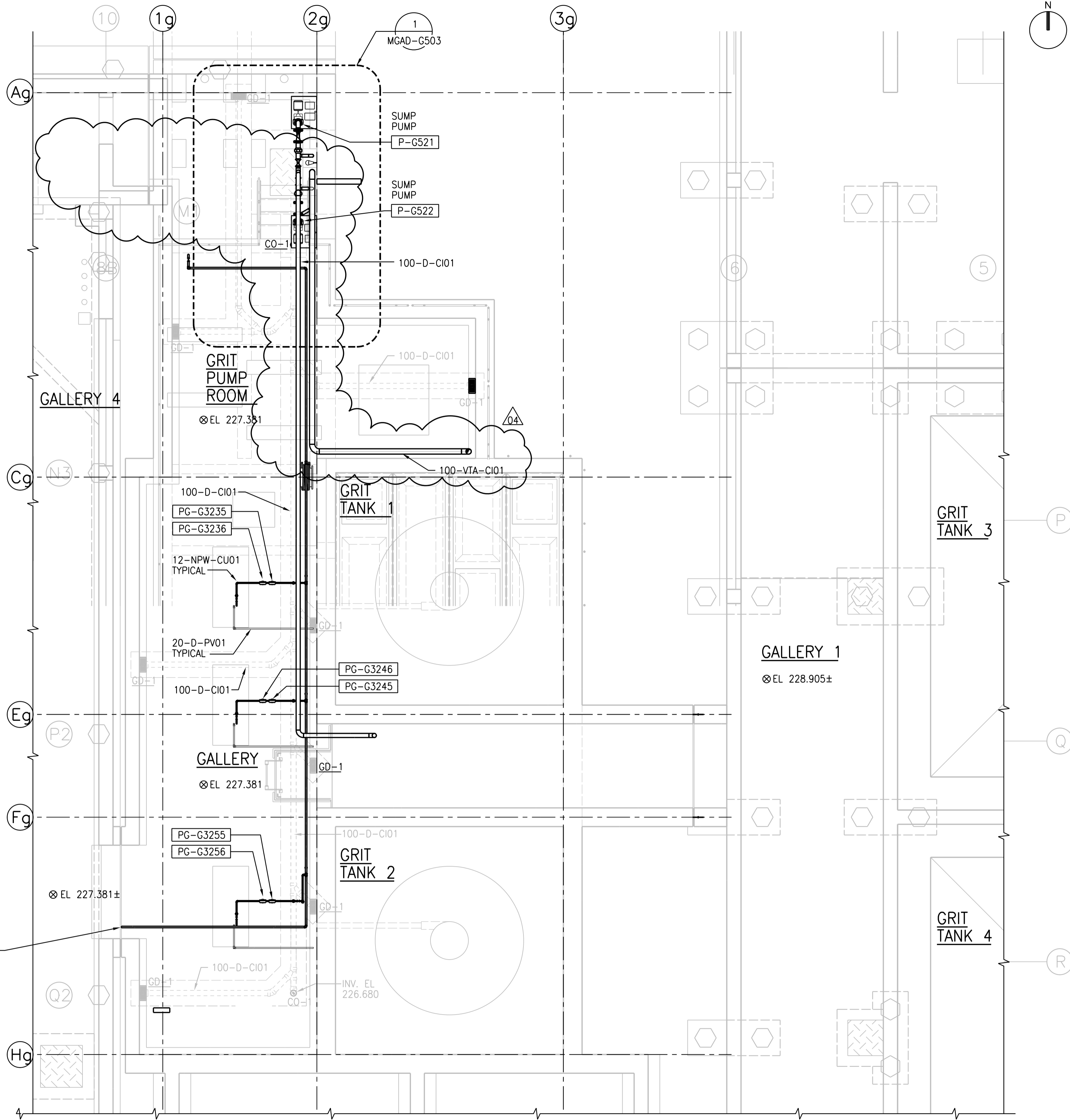
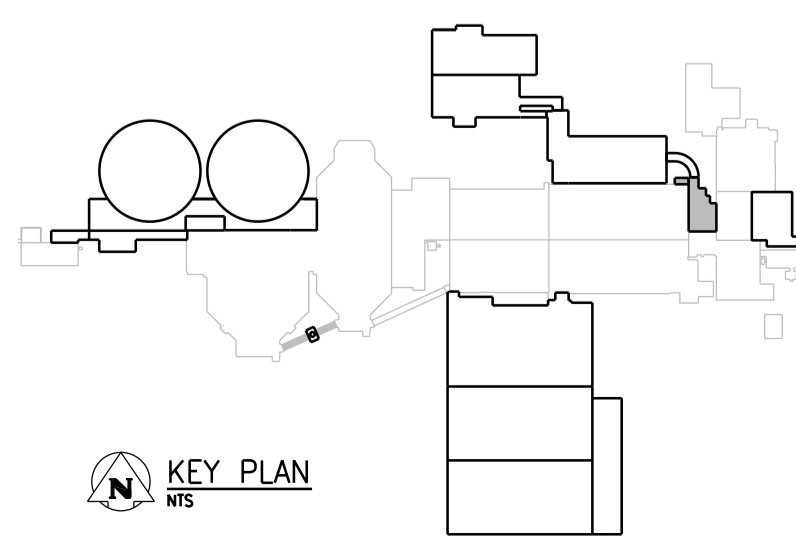


**ROOF PLAN**  
1:50



**BASEMENT PLAN**  
1:50



KEY PLAN  
NTS

**APEGM**  
Certificate of Authorization  
CH2M HILL Canada Ltd.  
No. 1441

NO.	REVISIONS	DATE	DESIGN	CHECK
04	ISSUED FOR ADDENDUM 3 - 976-2016	2017/06/21	K.F.	J.C.
03	ISSUED FOR CONSTRUCTION - 976-2016	2017/04/05	K.F.	J.C.
02	ISSUED FOR 90% PRELIMINARY REVIEW	05/2016	K.F.	J.C.
01	ISSUED FOR CONSTRUCTION	10/2015	K.F.	J.C.
00	ISSUED FOR TENDER	08/2015	K.F.	J.C.

**CH2MHILL**  
SNC-LAVALIN  
KCS GROUP CONSULTING ENGINEERS

DESIGNED BY: T. TRAN  
CHECKED BY: D. CUDDINGTON

DRAWN BY: K. FONG  
APPROVED BY: H.T. FREIHAMMER

SCALE: 1:50  
ISSUED FOR CONSTRUCTION

DATE: 2017/04/05  
BY: J. SHUMKA  
DATE: 2017/04/05

CONSULTANT NO.: 474248

ENGINEER'S SEAL  
21 June 2017  
PROVINCE OF MANITOBA  
T.T. TRAN  
Member  
40578  
REGISTERED PROFESSIONAL ENGINEER

**THE CITY OF WINNIPEG**  
Winnipeg WATER AND WASTE DEPARTMENT

SOUTH END WATER POLLUTION CONTROL CENTRE  
SEWPCC UPGRADING/EXPANSION PROJECT  
MECHANICAL  
GRIT TANKS 1 AND 2  
PLUMBING - BASEMENT PLAN AND ROOF PLAN

CITY DRAWING NUMBER: 1-0102-MGAD-G501  
SHEET: 04  
REV.:  
SIZE: A1