

1+120 1+140 1+160 1+180 1+200 1+220

WARNING

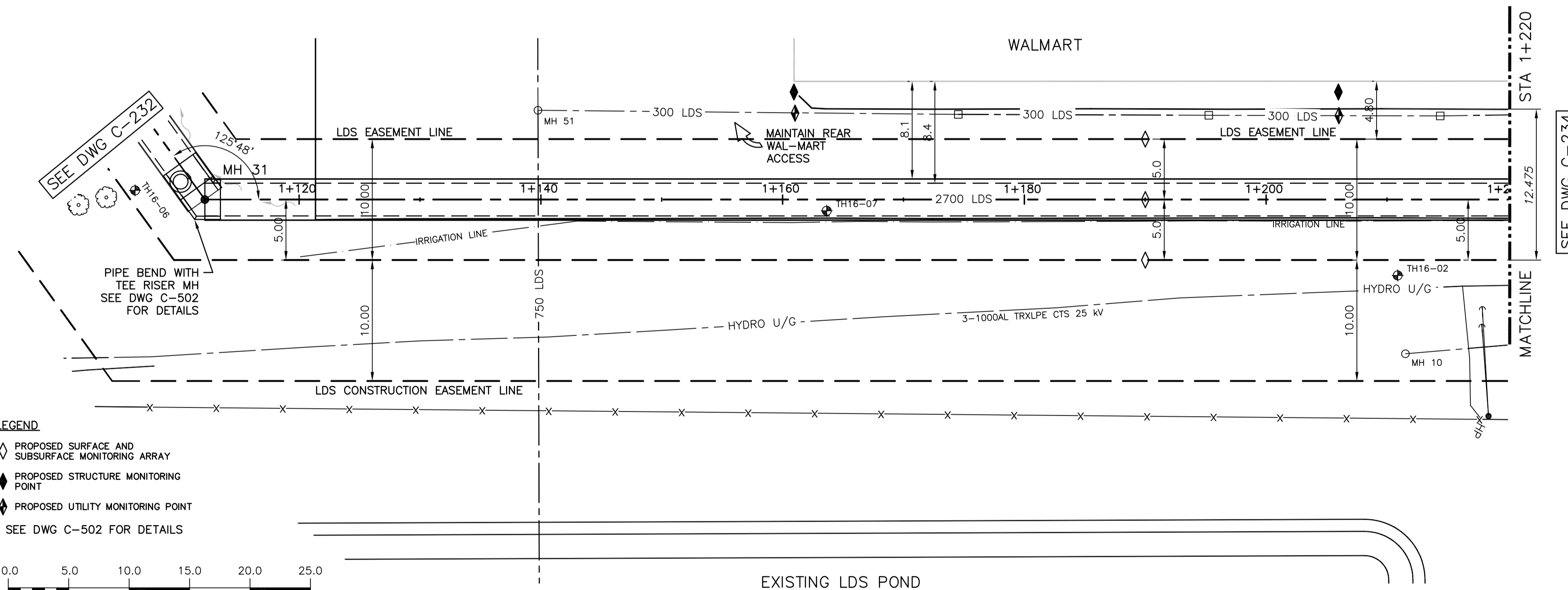
IF POWER EQUIPMENT OR EXPLOSIVES ARE TO BE USED FOR EXCAVATION ON THIS PROJECT THE CONTRACTOR MUST:
 1) NOTIFY THE GAS COMPANY OF THE PROPOSED LOCATION OF EXCAVATION.
 2) TAKE PRECAUTION TO AVOID DAMAGE TO GAS COMPANY INSTALLATIONS.
 SEE PROVINCIAL REGULATION 210/72 FOR DETAILS

PROPERTY LIMITS DELINEATION

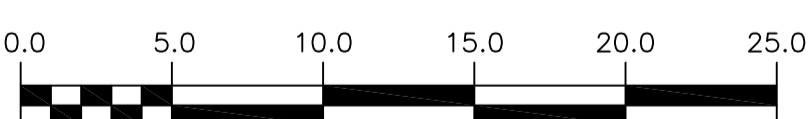
DELINEATION OF PROPERTY LIMITS AS SHOWN ON THIS DWG DOES NOT REPRESENT A "LEGAL SURVEY". CH2M HILL MAKES NO REPRESENTATION OR WARRANTY AS TO THE ACCURACY OF PROPERTY LIMITS DELINEATED ON THIS DRAWING, NOR ON THE DIMENSIONAL ACCURACY OF DRAWING FEATURES RELATIVE TO THOSE PROPERTY LIMITS.

CONSTRUCTION NOTES:

- SEWER AND WATER SERVICES SHOWN ON DRAWING ARE APPROXIMATE ONLY.
- LOCATION OF ALL SEWER AND WATER LINES TO BE CONFIRMED IN FIELD.
- INSTALL NEW SEWER BY TRENCHLESS METHODS, UNLESS OTHERWISE NOTED.
- MAINTAIN ACCESS TO REAR OF WAL-MART AT ALL TIMES.
- INSTALL AND MAINTAIN TEMPORARY CONSTRUCTION FENCING AROUND SITE IN ALL PUBLIC AREAS.



- LEGEND**
- PROPOSED SURFACE AND SUBSURFACE MONITORING ARRAY
 - PROPOSED STRUCTURE MONITORING POINT
 - PROPOSED UTILITY MONITORING POINT
- SEE DWG C-502 FOR DETAILS



EXISTING LDS POND

EXISTING	LEGEND-PLAN	PROPOSED	EXISTING	LEGEND-PLAN	PROPOSED	EXISTING	LEGEND-PROFILE	PROPOSED
150 WM	WATER MAIN	150 WM	HYDRO	M.T.S.	150 WM	WATER MAIN	150 WM	HYDRANT, VALVE
300 LDS	LAND DRAINAGE SEWER	300 LDS	CONCRETE	ASPHALT	300 LDS	LAND DRAINAGE SEWER	300 LDS	WASTE WATER SEWER
250 WWS	WASTE WATER SEWER	250 WWS	SIDEWALK	PLANNING	250 WWS	WASTE WATER SEWER	250 WWS	CENTRELINE
MANHOLE	CATCH BASIN	MANHOLE	PROPERTY LINE	SURVEY BAR	MANHOLE	NORTH/WEST GUTTER	MANHOLE	SOUTH/EAST GUTTER
CURB INLET	BEND	CURB INLET	GAS	CURB STOP	CURB INLET	N/W, S/E R'S	CURB INLET	N/W, S/E R'S
REDUCER	REDUCER	REDUCER	TEE	TEE	REDUCER		REDUCER	

LOCATION APPROVED UNDERGROUND STRUCTURES

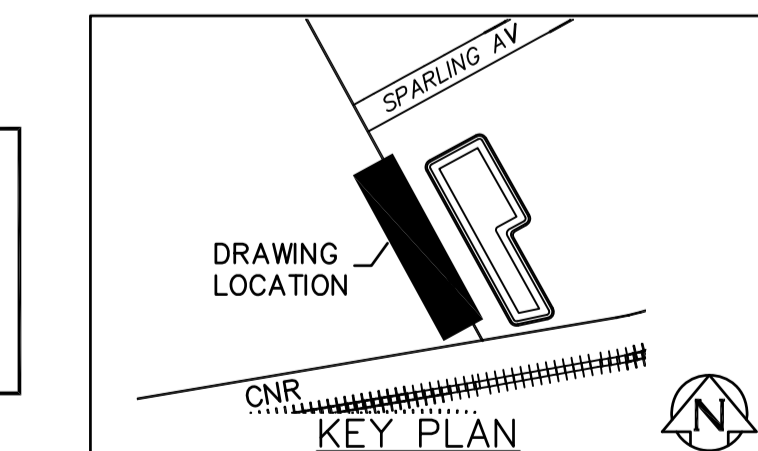
SUPV. U/G STRUCTURES COMMITTEE DATE
 NOTE:
 LOCATION OF UNDERGROUND STRUCTURES AS SHOWN ARE BASED ON THE BEST INFORMATION AVAILABLE BUT NO GUARANTEE IS GIVEN THAT ALL EXISTING UTILITIES ARE SHOWN OR THAT THE GIVEN LOCATIONS ARE EXACT. CONFIRMATION OF EXISTENCE AND EXACT LOCATION OF ALL SERVICES MUST BE OBTAINED FROM THE INDIVIDUAL UTILITIES BEFORE PROCEEDING WITH CONSTRUCTION.

NO.	REVISIONS	DATE	BY
D	ISSUED FOR RFQ 908-2016	11/2016	JBC
C	ISSUED FOR 95% REVIEW	09/2016	JBC
B	ISSUED FOR REVIEW	08/2016	JBC
A	ISSUED FOR REVIEW	05/2016	JBC

KGS GROUP CONSULTING ENGINEERS

DESIGNED BY: SDG
 CHECKED BY: MD
 DRAWN BY: JBC
 APPROVED BY: [Signature]
 HOR. SCALE: 1:250
 VERTICAL: 1:50

ENGINEER'S SEAL
 PRELIMINARY
 NOT FOR CONSTRUCTION



THE CITY OF WINNIPEG WATER AND WASTE DEPARTMENT

PROJECT TITLE: COCKBURN AND CALROSSIE COMBINED SEWER RELIEF WORKS - CONTRACT 4
 WILTON STREET FROM MH 31 TO STA 1+220

SHEET OF 7 OF 12
 COMPUTER FILE NAME: C-233.dwg
 CITY DRAWING NUMBER: LD-7893

File name: C:\p_w\workdir\c12mhill_wbg\cortez\1\0204776\