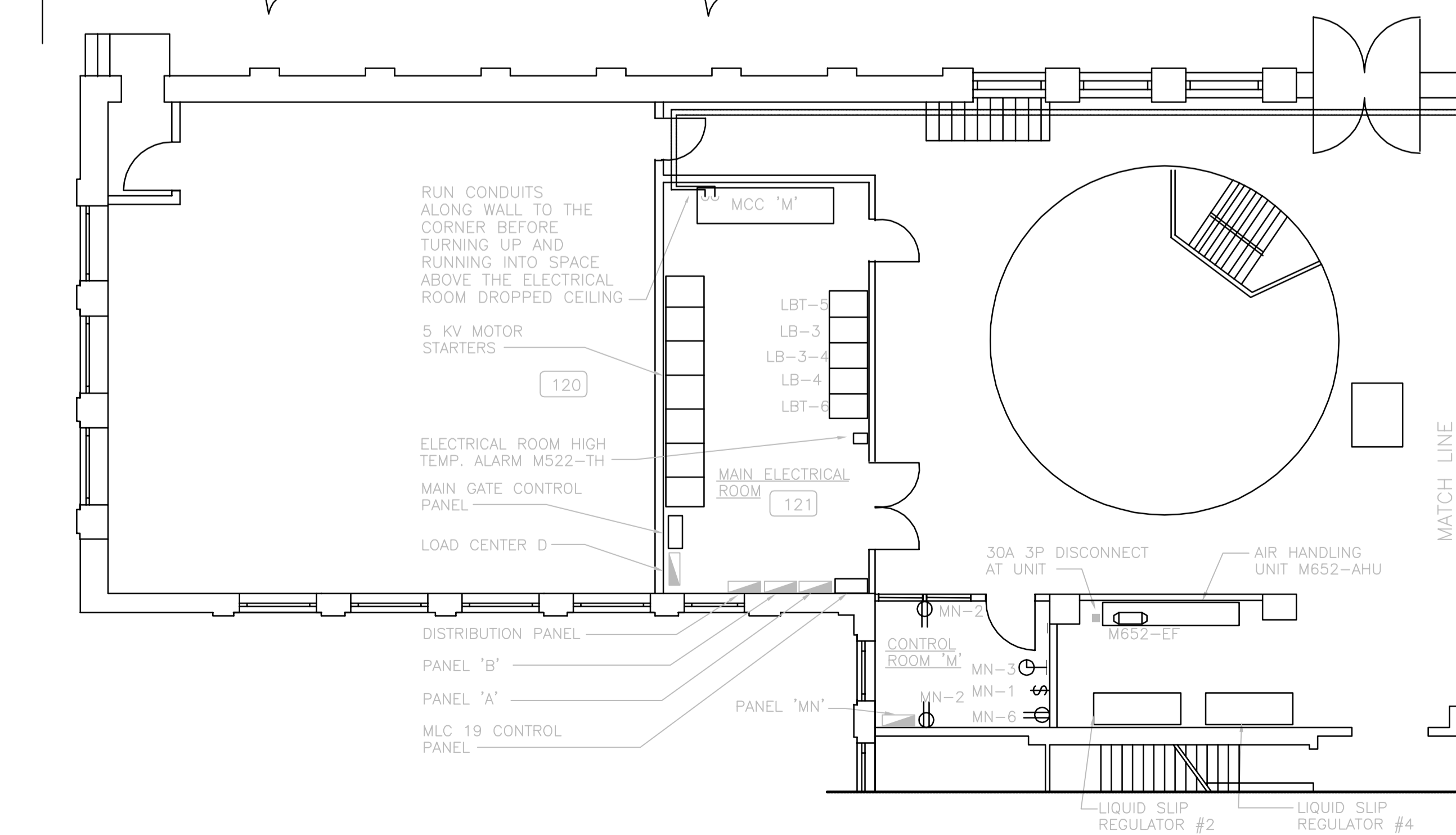
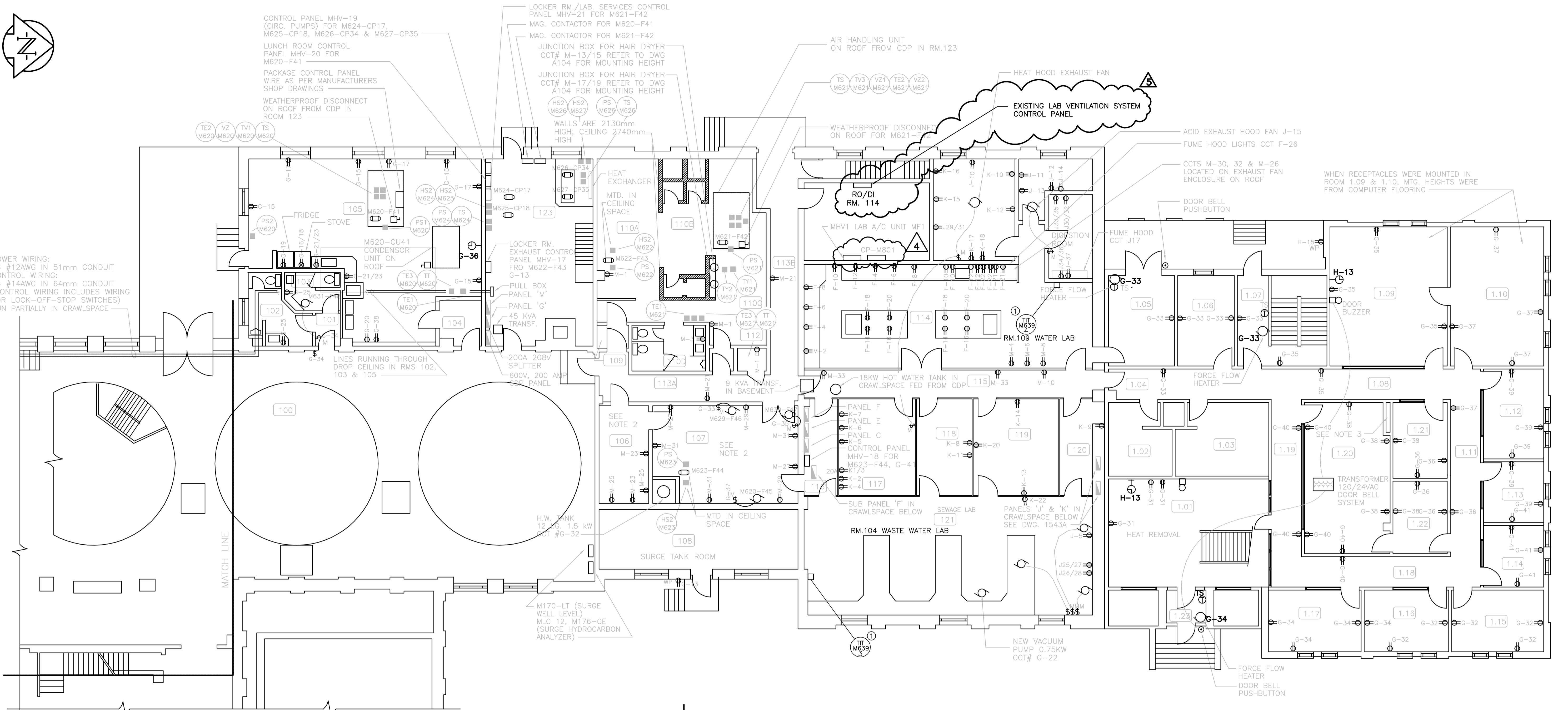


POWER WIRING:
18 #12AWG IN 51mm CONDUIT
CONTROL WIRING:
44 #14AWG IN 64mm CONDUIT
(CONTROL WIRING INCLUDES WIRING
FOR LOCK-OFF-STOP SWITCHES)
RUN PARTIALLY IN CRAWLSPACE



MAIN FLOOR PLAN
1:100

NOTES:

- ① CONFIRM MOUNTING LOCATION WITH CONTRACT ADMINISTRATOR PRIOR TO INSTALLATION.

NOTES:

- 1. RECEPTACLES MOUNTED AT 1200mm ABOVE FINISHED FLOOR IN ROOMS 106 & 107.
- 2. RECEPTACLE PROVIDED FOR RELOCATED DRINKING FOUNTAIN.
- 3. CONTRACTOR UTILIZED PIPE CHASE FOR RUNNING CONDUITS BETWEEN MAIN FLOOR, CRAWLSPACE AND SECOND FLOOR.

B.M. ELEV.			ENGINEER'S SEAL		
			THE CITY OF WINNIPEG WORKS AND OPERATIONS DIVISION WATERWORKS, WASTE & DISPOSAL DEPARTMENT		
5 ISSUED FOR BID OP#895-2016 16/10 4 ISSUED FOR 90% REVIEW 16/08 3 AS CONSTRUCTED 91/07 R.A.H. 2 AS CONSTRUCTED 89/08 1 REISSUED FOR TENDER 89/01 A.S. 0 ISSUED FOR TENDER 88/08 A.S. NO. REVISIONS DATE BY			DESIGNED BY R.A.H. CHECKED BY DRAWN BY N.B. APPROVED BY HOR. SCALE: 1:100 VERTICAL: 1:100 RELEASED FOR CONSTRUCTION:		CONSULTANT DRAWING NO. 880012-01-03 CITY DRAWING NUMBER NEP-1540 SHEET OF
			NORTH END WATER POLLUTION CONTROL CENTRE MAIN BUILDING RENOVATIONS-ELECTRICAL MAIN FLOOR PLAN POWER & EQUIPMENT LAYOUT		