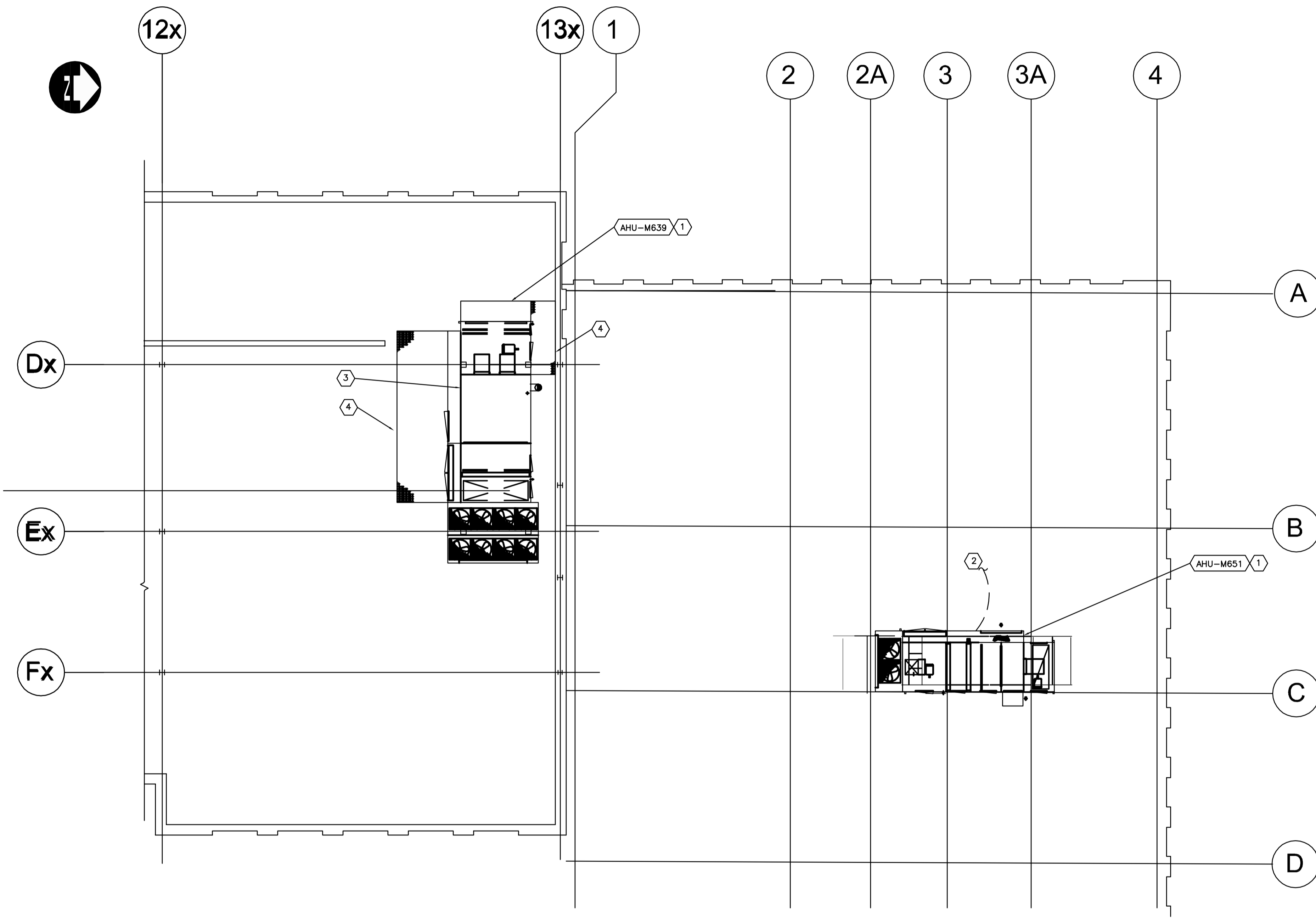


- ### DRAWING NOTES
1. PROVIDE NEW ROOF CURB. FOOTPRINT OF NEW UNIT TO MATCH EXISTING. REFER TO STRUCTURAL FOR COORDINATION
  2. INSTALL THERMOSTAT IN SECOND FLOOR CORRIDOR. CONFIRM WITH CONTRACT ADMINISTRATOR ON LOCATION.
  3. RECONNECT GAS LINE.
  4. SERVICE PLATFORM TO BE REPLACED IN KIND. PROVIDE SEALED SHOP DRAWINGS TO CONTRACT ADMINISTRATOR PRIOR TO INSTALLATION.

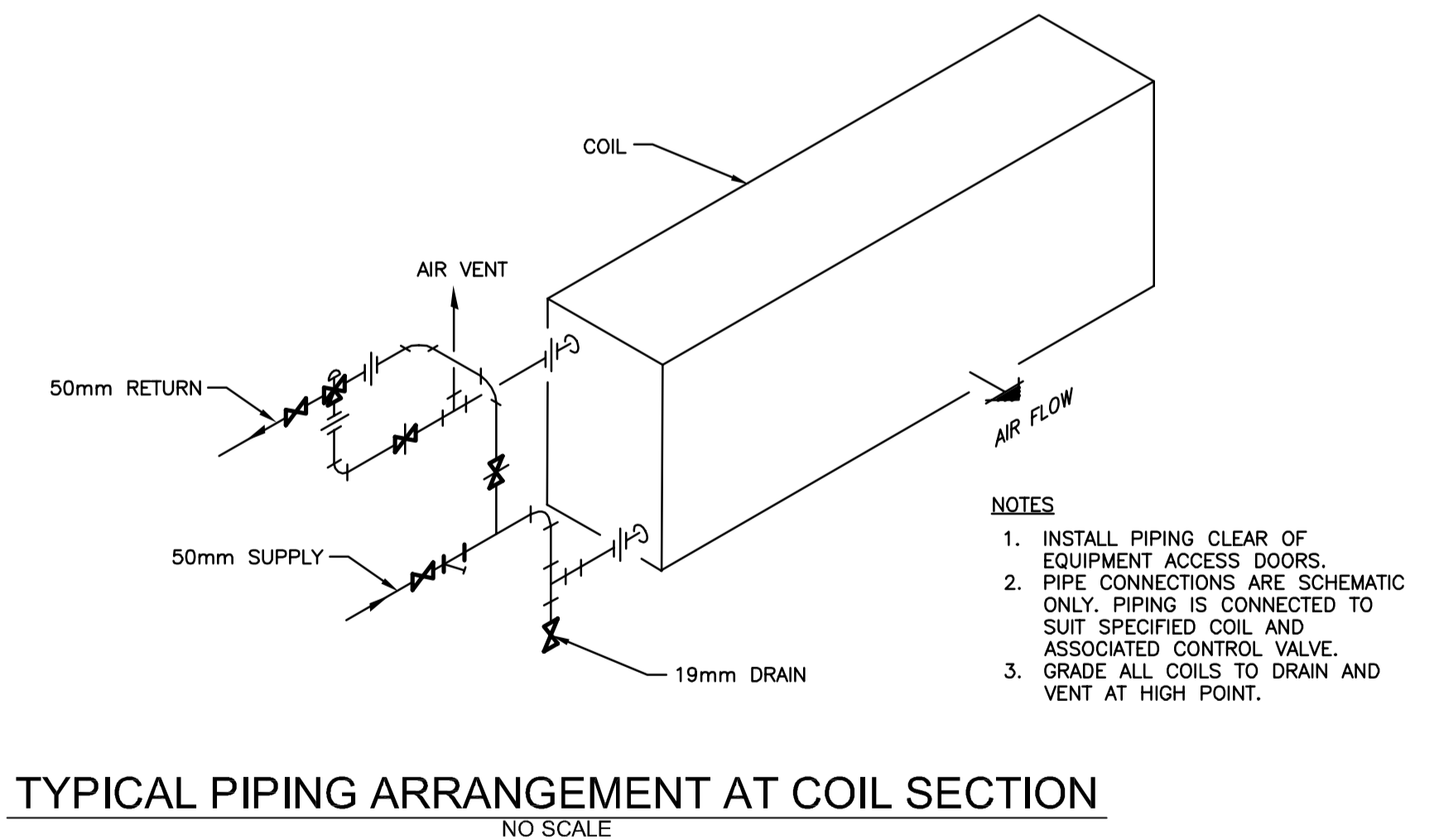
- ### GENERAL NOTES
1. REPAIR ROOF FROM AREAS AFFECTED BY DEMOLITION. REPLACE IN KIND.
  2. \_\_\_\_\_

AIR HANDLING UNIT SCHEDULE			
TAG	AHU-M639	AHU-M651	
SUPPLY FAN			
AIR FLOW RATE (CFM / L/s)	15,850 / 7,481	11,078	5,229
E.S.P. (in.WC / Pa)	1.0 / 249	2.0	498
MOTOR TYPE	TEFC	TEFC	
MOTOR SIZE (hp / kW)	20 / 14.9	10	7.5
VOLTAGE/PHASE	600 / 3	600 / 3	
RETURN FAN			
AIR FLOW RATE (CFM / L/s)		10,025	4,732
E.S.P. (in.WC / Pa)		0.25	62
MOTOR TYPE		TEFC	
MOTOR SIZE (hp)		7.5	5.6
VOLTAGE/PHASE		600 / 3	
HEATING SECTION			
HEAT CAPACITY INPUT (MBH / kW)	1600 / 468.9		
HEAT CAPACITY OUTPUT (MBH / kW)	1440 / 422.0	143.2	42.0
FLUID		50% PROP. GLY.	
EGT (°F / °C)		180.0	82.2
LGT (°F / °C)		160.0	71.1
EAT (°F / °C)	-31.0 / -35.0	56.0	13.3
LAT (°F / °C)	53.0	11.7	23.9
FLOW RATE (GPM / L/S)		27.9	1.76
FLUID PRESSURE DROP (FT / M)		1.7	0.5
COOLING SECTION			
COOLING COIL NET CAPACITY (MBH / kW)	815.1 / 238.9	240	70.3
AIR EDWT (°F / °C)	87.0 / 30.6	75.7	24.3
AIR EWBT (°F / °C)	73.0 / 22.8	63.3	17.4
AIR LDWT (°F / °C)	58.5 / 14.7	56.4	13.6
AIR LWBT (°F / °C)	58.1 / 14.5	55.9	13.3
REFRIGERANT:	R-410A	R-410A	
EER	9.7	11.0	
VOLTAGE/PHASE:	600 / 3	600 / 3	

NOTES:  
 1. AHU-M639 TO MATCH EXISTING ROOF CURB FOOTPRINT.  
 2. PROVIDE SCHNEIDER VT 8600 CONTROLLER C/W LOCKABLE COVER FOR AHU-M651.



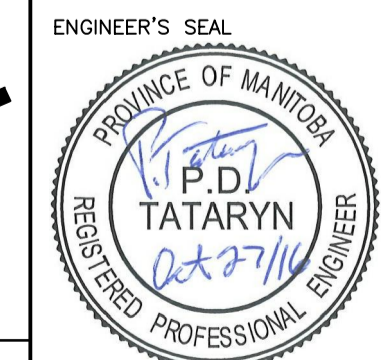
NEW HVAC - PART ROOF PLAN  
1:100



TYPICAL PIPING ARRANGEMENT AT COIL SECTION  
NO SCALE



B.M. ELEV.	DESIGNED BY	PDT
	DRAWN BY	JV
	CHECKED BY	NDC
	APPROVED BY	
	HOR. SCALE	NONE
	VERTICAL	
0	Issued for Tender	16/10/27 PDT
NO.	REVISIONS	DATE BY DATE



**THE CITY OF WINNIPEG**  
WATER AND WASTE DEPARTMENT

NORTH END SEWAGE TREATMENT PLANT  
NEWPC MAIN BUILDING - HVAC REPLACEMENT

NEW HVAC - PART ROOF PLAN

CITY DRAWING NUMBER: 1-0101M-M0015-001  
SHEET 6 OF 21

CONSULTANT PROJECT NO. 163526

**M-2**