

LEGEND:

 DISCONNECT SWITCH

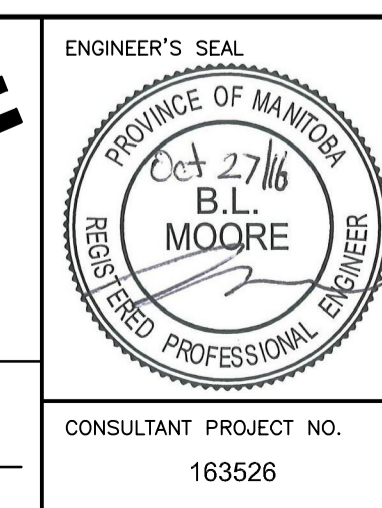
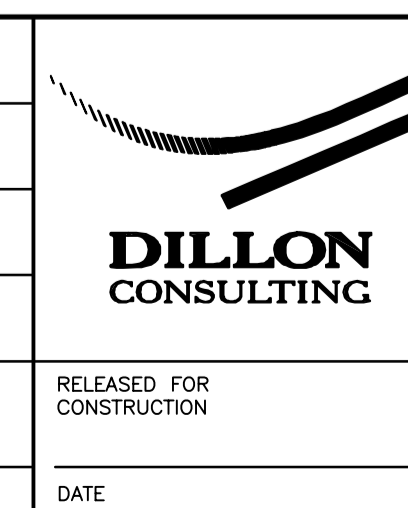
ROOF PLAN - EQUIPMENT LAYOUT
1:100

NOTES:

1. DISCONNECT EXISTING HVAC EQUIPMENT.
2. REMOVE EXISTING CABLING AND CONDUIT BACK TO SOURCE, PATCH OPENINGS.
3. INSTALL PITCH POCKETS FOR ROOF PENETRATIONS FOR POWER SUPPLY CABLES, ETHERNET CABLES, AND CONTROL SIGNAL CABLES.
4. SUPPLY AND INSTALL NEW 3C-#1/0 TECK CABLE FROM MCC-M1 TO AHU-M651, RE-USE EXISTING 150A BREAKER.
5. SUPPLY AND INSTALL NEW 3C-#1/0 TECK CABLE FROM TEMPORARY DISTRIBUTION PANELBOARD DP-M798 TO AHU-639. RE-USE EXISTING 150A BREAKER.



B.M. ELEV.	DESIGNED BY	BLM
	DRAWN BY	SCK
	CHECKED BY	-
	APPROVED BY	-
	HOR. SCALE	RELEASED FOR CONSTRUCTION
0	Issued for Tender	16/10-27 BLM
	NO. REVISIONS	DATE BY DATE



<p>THE CITY OF WINNIPEG WATER AND WASTE DEPARTMENT</p>	<p>NORTH END SEWAGE TREATMENT PLANT NEWPCC MAIN BUILDING - HVAC REPLACEMENT</p>	<p>CITY DRAWING NUMBER 1-0101M-E0058-001</p>
	<p>ELECTRICAL - ROOF PLAN</p>	<p>SHEET 7 OF 21</p>
<p>CONSULTANT PROJECT NO. 163526</p>		<p>E-01</p>