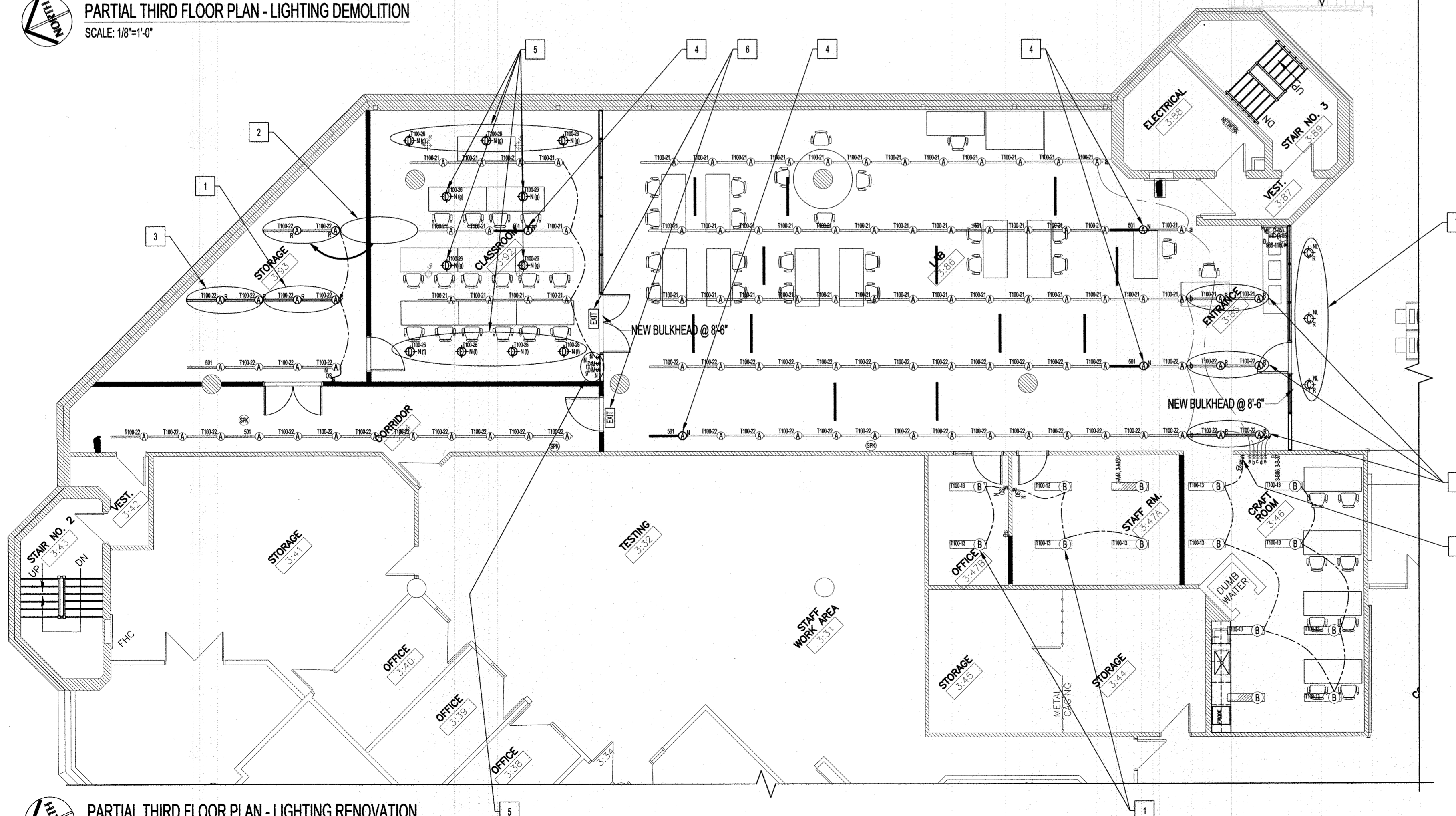


PARTIAL THIRD FLOOR PLAN - LIGHTING DEMOLITION
SCALE: 1/8"=1'-0"



PARTIAL THIRD FLOOR PLAN - LIGHTING RENOVATION
SCALE: 1/8"=1'-0"

LIGHTING DEMOLITION NOTES: "X"
ALSO SEE NOTES & SPECIFICATIONS.
ABANDON WIRING, COMPONENTS & SUPPORTS NOT ALLOW.

1. REMOVE LUMINAIRES FROM ROW OF LUMINAIRES. RETAIN LUMINAIRES FOR RELOCATION.
2. RELOCATE LIGHT SWITCH CIRCUIT TO NEW LOCATION IN ROOM, SEE RENOVATION.
3. RELOCATE LUMINAIRES & CIRCUIT TO NEW BULKHEAD.

LUMINAIRE, SWITCH & LIGHTING CONTROL SCHEDULE				
TYPE	MANUFACTURER	CATALOGUE No.	LAMP	DESCRIPTION
EXISTING			(1) 32W T8 4100K	T8 STRIPLIGHT, 48", 347V
EXISTING			(2) 32W T8 4100K	1'X4' RECESSED FLUORESCENT, ACRYLIC DIFFUSER, 347V
EXISTING				RECESSED DOWNLIGHT
(NEW)	JUNO INDY	FIXTURE (LCP-15403-B-G3-LDI) REFLECTOR (L800HW-CQ) MOUNTING (P-36-C-B)	LED 1500 LUMENS, 4000K	6" LED CYLINDER PENDANT MOUNT DOWNLIGHT, BLACK, CLEAR HYPERBOLIC WIDE REFLECTOR, 36" STEM. (SHOP DRAWING APPROVAL REQUIRE)
OS	(NEW) ACUITY CONTROLS	WSX PDT		WALL SWITCH SENSOR WITH COVER, DUAL INTEGRAL OCCUPANCY CONTROL (PIR & MICROPHONICS), 347VAC, WHITE
EXIT	(NEW) TO MATCH EXISTING			EMERGENCY EXIT SIGN, 120/347 VAC INPUT, FIELD SELECTABLE. CONNECT TO EXISTING EMERGENCY CIRCUIT.

ALL NEW LIGHTING LUMINAIRES AND COMPONENTS SHALL BE MANITOBA HYDRO POWER SMART APPROVED.

ELECTRICAL LEGEND AND ABBREVIATIONS	
TYPE	DESCRIPTION
AC	ABOVE COUNTER
AFF	ABOVE FINISH FLOOR
CLNG	CEILING MOUNTED
E	EXISTING OR NO NOTATION
N	NEW
R	RELOCATED LOCATION & REUSE
⊕	DUPLEX RECEPTACLE
⊕ ²	DUAL DUPLEX RECEPTACLE
⊕ ² ⊖	DUPLEX RECEPTACLE - SPLIT CIRCUIT
⊕ ² (CLNG)	DUPLEX RECEPTACLE - CEILING MOUNTED
⊕	LIGHT SWITCH, SINGLE
⊖	ELECTRICAL PANEL
◁	DATA "D" PORTS IN SINGLE DEVICE BOX.
◁	PHONE PORT
◁ ²	SINGLE DEVICE BOX WITH: PHONE & DATA
⊕ ² MD	MOTION DETECTOR
⊕ ² SCR	THERMOSTAT WITH SCR
⊕ ² CLNG	POWER CORD REEL - CEILING MOUNTED

POWER, DATA & COMMUNICATION RENOVATION NOTES: "X"
ALSO SEE NOTES & SPECIFICATIONS.
ALL WIRING & COMPONENTS TO BE CONCEALED INSIDE WALL.

1. REWIRE LIGHTING CIRCUIT TO NEW CIRCUIT OR ISOLATE FROM EXISTING CIRCUIT. REWIRE TO NEW OCCUPANCY SENSOR LIGHT SWITCH.
2. RELOCATE LUMINAIRE & REWIRE TO NEW CIRCUIT & OCCUPANCY SENSOR LIGHT SWITCH.
3. RELOCATED DEMO LUMINAIRES & WIRE TO CIRCUIT SHOWN.
4. REWIRE TO EXISTING NIGHTLIGHT/EMERGENCY CIRCUIT.
5. PROVIDE 347V, 15A LIGHTING CIRCUIT WITH 15A BREAKER, #12/3 WIRE IN EMT TO LIGHTING PANEL T100 IN ELECTRICAL ROOM 3-88. PROVIDE A NEUTRAL CONDUCTOR AT EVERY SWITCH POINT PER NEC 2011, SECTION 404.2C, AS PER SPECIFICATION. WIRE WEST SIDE OF CLASSROOM 3:92, TYPE "D" (f) TO DIMMER SWITCH. TYPE "A" LUMINAIRES TO BE WIRED TO NEW SINGLE GANG SWITCH. WIRE OTHER TYPE "D" (g) TO OTHER DIMMER SWITCH. ALL THREE SWITCHES SHALL BE INSTALLED AT SAME ELEVATION OF 42" AFF.
6. PROVIDE NEW EMERGENCY EXIT SIGN. MOUNT 96" AFF CENTERED ABOVE DOOR.

NOTES:
SEE SHEET E1.

No.	REVISION/DESCRIPTION	BY	DATE
1	ISSUED FOR CONSTRUCTION	MMK	AUG 1 2016

SEAL

DRAWN	DATE	DTA	CHECKED	DATE	DTA	DESIGNED	DATE	DTA	APPROVED
	2016.06.09								

Winnipeg
**THE CITY OF WINNIPEG
 PLANNING, PROPERTY AND
 DEVELOPMENT DEPARTMENTS
 MUNICIPAL ACCOMMODATIONS DIVISION**
 3-65 GARRY STREET, R3C 4K4

PROJECT
**MILLENNIUM LIBRARY
 DEVELOPMENT OF THIRD FLOOR
 IDEA MILL**
 251 DONALD STREET

SHEET TITLE
**PARTIAL THIRD FLOOR PLAN
 ELECTRICAL RENOVATION
 LIGHTING**

SCALE	PROJECT No:	SHEET No:
AS SHOWN	2015-123	E2

DRAWING SHEET SIZE: A1 (841mm x 594mm) PLOT 1:1