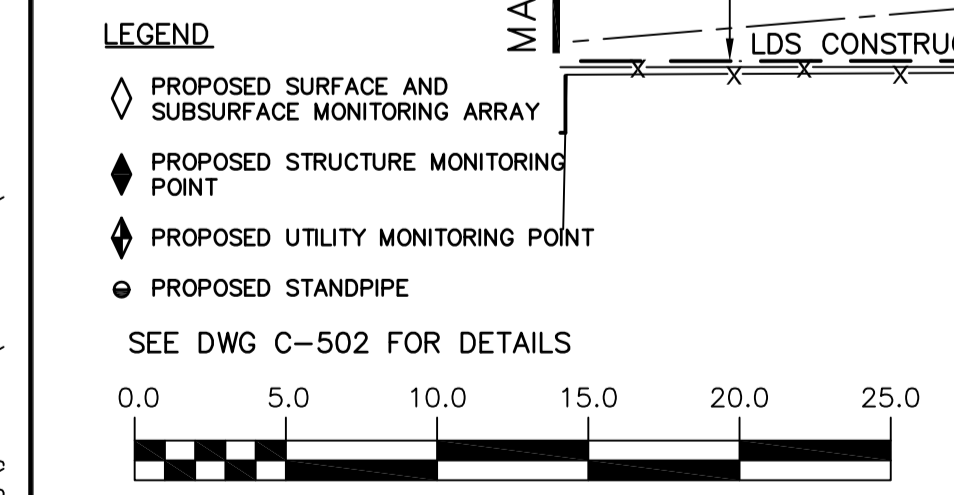
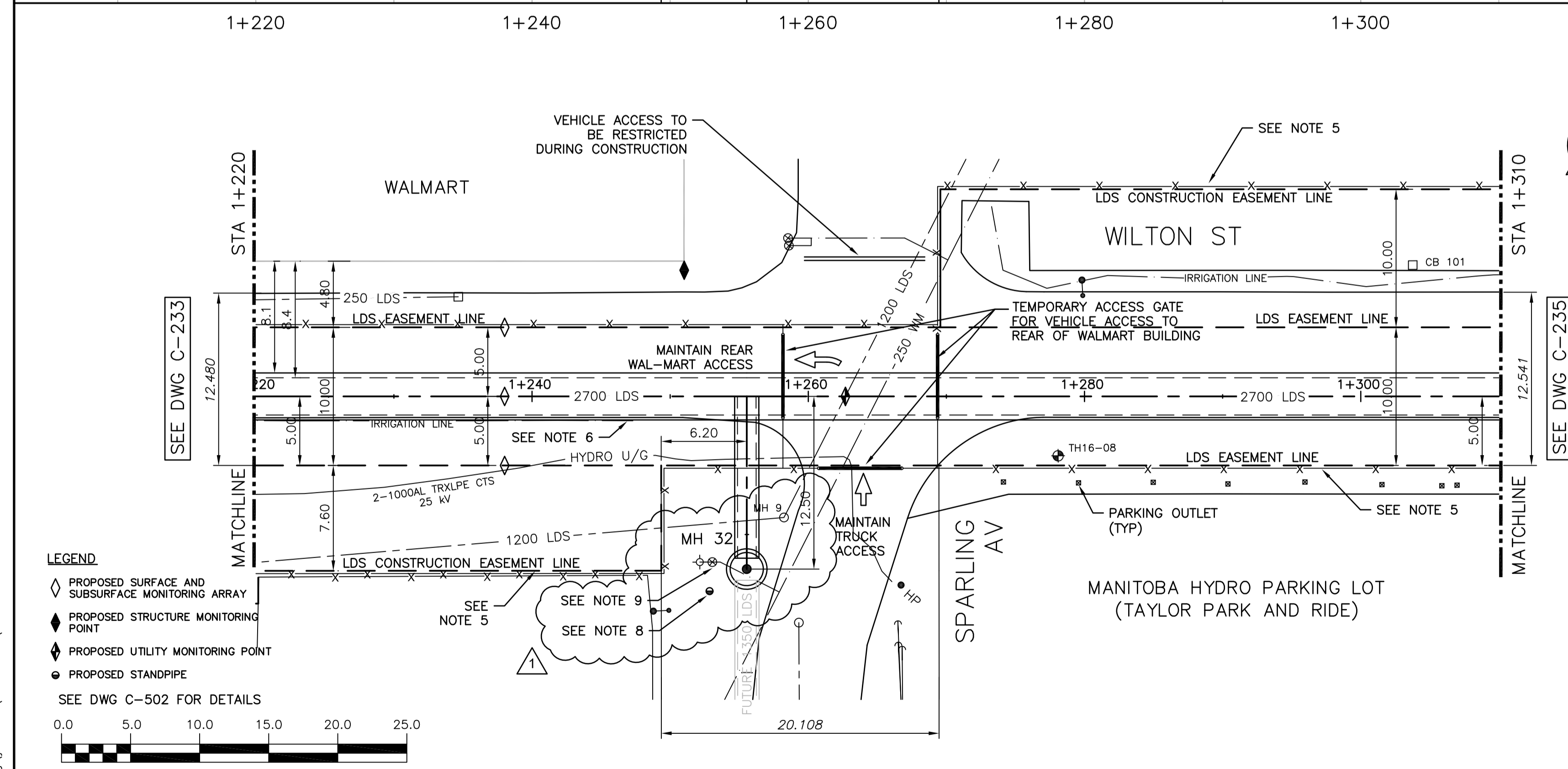


WARNING
 IF POWER EQUIPMENT OR EXPLOSIVES ARE TO BE USED FOR EXCAVATION ON THIS PROJECT THE CONTRACTOR MUST:
 1) NOTIFY THE GAS COMPANY OF THE PROPOSED LOCATION OF EXCAVATION.
 2) TAKE PRECAUTION TO AVOID DAMAGE TO GAS COMPANY INSTALLATIONS.
 SEE PROVINCIAL REGULATION 210/72 FOR DETAILS

PROPERTY LIMITS DELINEATION
 DELINEATION OF PROPERTY LIMITS AS SHOWN ON THIS DWG DOES NOT REPRESENT A "LEGAL SURVEY". CH2M HILL MAKES NO REPRESENTATION OR WARRANTY AS TO THE ACCURACY OF PROPERTY LIMITS DELINEATED ON THIS DRAWING, NOR ON THE DIMENSIONAL ACCURACY OF DRAWING FEATURES RELATIVE TO THOSE PROPERTY LIMITS.

- CONSTRUCTION NOTES:**
- SEWER AND WATER SERVICES SHOWN ON DRAWING ARE APPROXIMATE ONLY.
 - LOCATION OF ALL SEWER AND WATER LINES TO BE CONFIRMED IN FIELD.
 - INSTALL NEW SEWER BY TRENCHLESS METHODS, UNLESS OTHERWISE NOTED.
 - MAINTAIN TRUCK ACCESS TO REAR OF WAL-MART FROM SPARLING AVENUE AT ALL TIMES.
 - INSTALL AND MAINTAIN TEMPORARY CONSTRUCTION FENCING ALONG ALL LDS CONSTRUCTION EASEMENT LINES. TEMPORARY ACCESS GATES TO BE INSTALLED AS SHOWN.
 - IRRIGATION LINE TO BE CONFIRMED PRIOR TO CONSTRUCTION AND RELOCATED IF NECESSARY.
 - TIE-IN LOCATION TO 2700 LDS TO BE LOCATED EITHER NORTH OR SOUTH OF PROPOSED LOCATION TO ALLOW CONNECTION POINT TO BE ALIGNED TO AVOID PIPE JOINTS BY MINIMUM OF 450mm.
 - PROPOSED STANDPIPE LOCATION TO BE DETERMINED ON SITE BY THE CONTRACTOR PRIOR TO CONSTRUCTION COMMENCEMENT. REFER TO SPECIFICATION FOR DETAILS.
 - RELOCATE EXISTING HYDRANT, HYDRANT VALVE AND PIPE AS REQUIRED FOR MH 32 INSTALLATION AS DIRECTED BY CONTRACT ADMINISTRATOR.



EXISTING	LEGEND-PLAN	PROPOSED	EXISTING	LEGEND-PLAN	PROPOSED	EXISTING	LEGEND-PROFILE	PROPOSED
150 WM	WATER MAIN	150 WM	HYDRO	M.T.S.	150 WM	WATER MAIN	150 WM	HYDRANT, VALVE
300 LDS	LAND DRAINAGE SEWER	300 LDS	CONCRETE	ASPHALT	300 LDS	LAND DRAINAGE SEWER	300 LDS	LAND DRAINAGE SEWER
250 WWS	WASTE WATER SEWER	250 WWS	SIDEWALK	PLANNING	250 WWS	WASTE WATER SEWER	250 WWS	WASTE WATER SEWER
MANHOLE	CATCH BASIN	MANHOLE	PROPERTY LINE	SURVEY BAR	MANHOLE	WASTE WATER SEWER	MANHOLE	WASTE WATER SEWER
CURB INLET	BEND	CURB INLET	GAS	CURB STOP	CURB INLET	WASTE WATER SEWER	CURB INLET	WASTE WATER SEWER
REDUCER	TEE	REDUCER	TEE	TEE	REDUCER	WASTE WATER SEWER	REDUCER	WASTE WATER SEWER

LOCATION APPROVED UNDERGROUND STRUCTURES

SUPV. U/G STRUCTURES COMMITTEE DATE

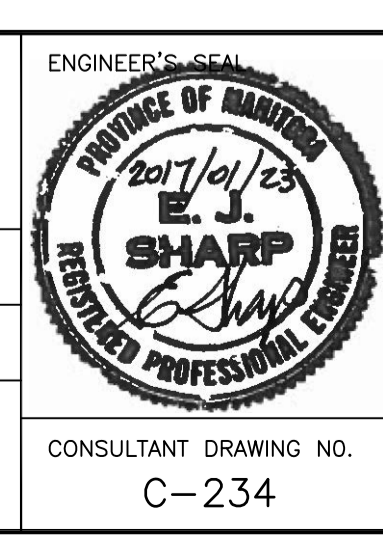
NOTE:
 LOCATION OF UNDERGROUND STRUCTURES AS SHOWN ARE BASED ON THE BEST INFORMATION AVAILABLE BUT NO GUARANTEE IS GIVEN THAT ALL EXISTING UTILITIES ARE SHOWN OR THAT THE GIVEN LOCATIONS ARE EXACT. CONFIRMATION OF EXISTENCE AND EXACT LOCATION OF ALL SERVICES MUST BE OBTAINED FROM THE INDIVIDUAL UTILITIES BEFORE PROCEEDING WITH CONSTRUCTION.

NO.	REVISIONS	DATE	BY
1	ISSUED FOR ADDENDUM NO. 2	01/2017	JBC
0	ISSUED FOR TENDER	01/2017	JBC

KGS GROUP CONSULTING ENGINEERS

ch2m

DESIGNED BY: SDG
 CHECKED BY: MD
 DRAWN BY: JBC
 APPROVED BY:
 HOR. SCALE: 1:250
 VERTICAL: 1:50
 RELEASED FOR CONSTRUCTION:
 DATE:



APGM
 Certificate of Authorization
 CH2M HILL Canada Ltd.
 No. 1441

Winnipeg
 THE CITY OF WINNIPEG
 WATER AND WASTE DEPARTMENT

PROJECT TITLE
 COCKBURN AND CALROSSIE COMBINED
 SEWER RELIEF WORKS - CONTRACT 4

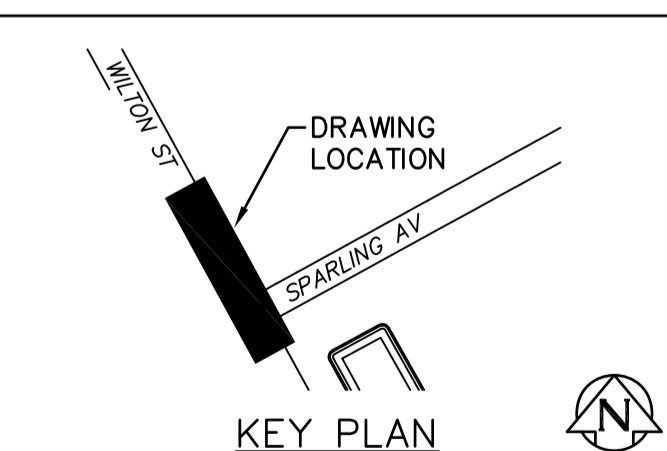
FROM STA 1+220 TO STA 1+310

SHEET OF
 8 OF 12

COMPUTER FILE NAME
 C-234.dwg

CITY DRAWING NUMBER
 LD-7894

CONSULTANT DRAWING NO.
 C-234



File name C:\pw_workdir\ch2mhill_wbg_jcortez\0204776\