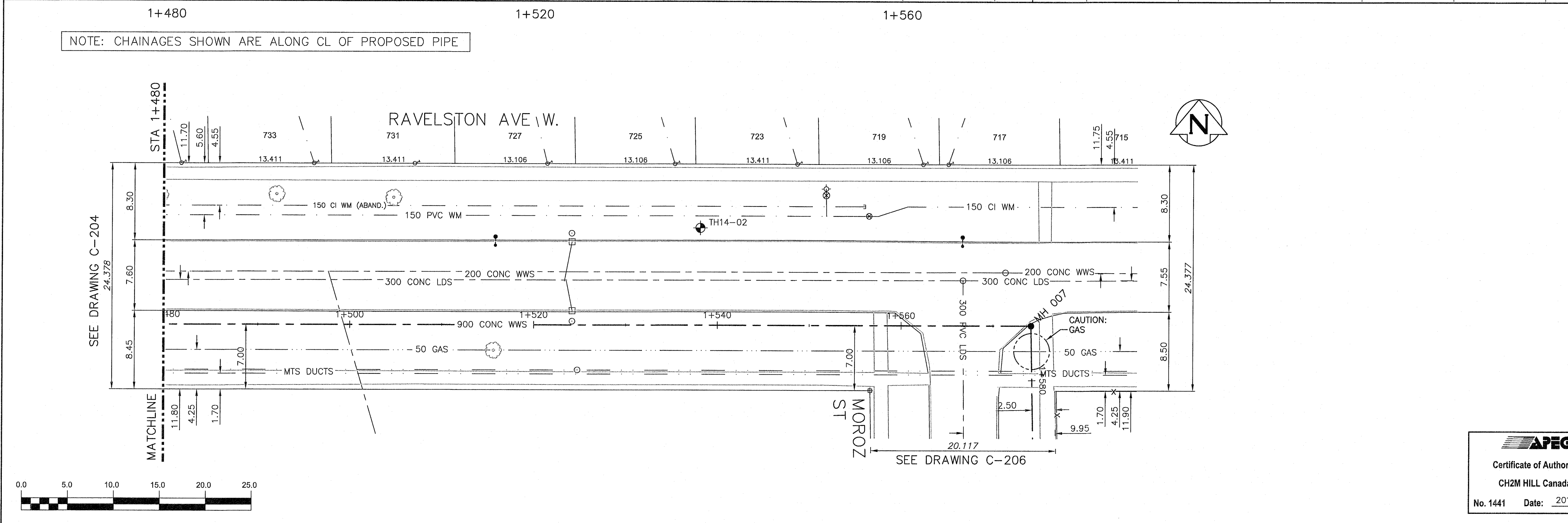


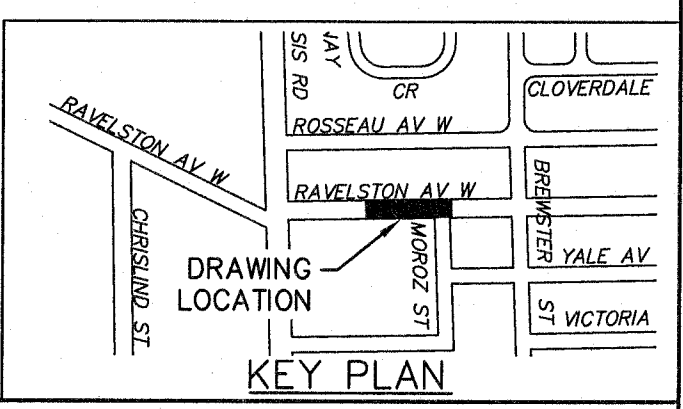
NOTE: CHAINAGES SHOWN ARE ALONG CL OF PROPOSED PIPE

**WARNING**  
 IF POWER EQUIPMENT OR EXPLOSIVES ARE TO BE USED FOR EXCAVATION ON THIS PROJECT THE CONTRACTOR MUST:  
 1) NOTIFY THE GAS COMPANY OF THE PROPOSED LOCATION OF EXCAVATION.  
 2) TAKE PRECAUTION TO AVOID DAMAGE TO GAS COMPANY INSTALLATIONS. SEE PROVINCIAL REGULATION 210/72 FOR DETAILS.

**CONSTRUCTION NOTES:**  
 1. SEWER AND WATER SERVICES SHOWN ON DRAWING ARE APPROXIMATE ONLY.  
 2. LOCATION OF ALL SEWER AND WATER LINES TO BE CONFIRMED IN FIELD.  
 3. INSTALL NEW SEWER BY TRENCHLESS METHODS, UNLESS OTHERWISE NOTED.



**APEGM**  
 Certificate of Authorization  
 CH2M HILL Canada Ltd.  
 No. 1441 Date: 2016 02 11



200 WM	WATERMAIN	200 WM	SL, HYDRO	150 WM	WATERMAIN	150 WM
○	HYDRANT	+	---	---	○	HYDRANT
○	VALVE	○	---	---	○	VALVE
○	525 LDS	○	---	---	○	525 LDS
○	375 WWS	○	---	---	○	375 WWS
○	MANHOLE	○	---	---	○	MANHOLE
○	CATCH BASIN	○	---	---	○	CATCH BASIN
○	CURB INLET	○	---	---	○	CURB INLET
○	JUNCTIONS	○	---	---	○	JUNCTIONS
○	CULVERT	○	---	---	○	CULVERT
○	ANODE	○	---	---	○	ANODE
---	EXISTING	---	---	---	---	EXISTING
---	LEGEND-PLAN	---	---	---	---	LEGEND-PLAN

**LOCATION APPROVED**  
 UNDERGROUND STRUCTURES

SUPV. U/G STRUCTURES COMMITTEE DATE

NOTE:  
 LOCATION OF UNDERGROUND STRUCTURES AS SHOWN ARE BASED ON THE BEST INFORMATION AVAILABLE BUT NO GUARANTEE IS GIVEN THAT ALL EXISTING UTILITIES ARE SHOWN OR THAT THE GIVEN LOCATIONS ARE EXACT. CONFIRMATION OF EXISTENCE AND EXACT LOCATION OF ALL SERVICES MUST BE OBTAINED FROM THE INDIVIDUAL UTILITIES BEFORE PROCEEDING WITH CONSTRUCTION.

DESIGNED BY MAF  
 DRAWN BY JBC  
 SCALE: HORIZONTAL 1:250  
 VERTICAL 1:50  
 PLOT DATE: 2016 02 11

ENGINEER'S SEAL  
 PROVINCE OF MANITOBA  
 REGISTERED PROFESSIONAL ENGINEER  
 Member 25524  
 CONSULTANT DRAWING NUMBER  
 C-205

THE CITY OF WINNIPEG  
 WATER AND WASTE DEPARTMENT  
 ENGINEERING DIVISION

TRANSCONA SEWER RELIEF WORKS  
 CONTRACT NO. 1  
 RAVELSTON AVE W  
 FROM STA 1+480 TO MOROZ ST

SHEET 8 OF 24  
 CITY DRAWING NUMBER  
 LD-7749